



Presents:

12290 SW Main St

For Lease

launch



Table of Contents

- Executive Summary
- Market Area Information

Exclusive Representation By

Blue Roof Property Management, LLC

James White, Principal Broker

503-278-5342

james@blueroofpm.com

Co-Brokerage Liberty First Realty, LLC

The above agent/brokerage makes no warranty or representation about the content of this brochure. While the information displayed herein is thought to be accurate, it is your responsibility to independently confirm its accuracy and completeness. Any projections, opinions, assumptions or estimates are used for example only and do not represent the current or future performance of the property. The above agent/brokerage neither practices accounting nor gives advice regarding tax benefits/liabilities or any other tax, accounting or financial consideration, nor does the above agent/brokerage give advice regarding financial investments. It is strongly recommended that you seek appropriate professional counsel regarding your rights as a property owner or prospective investor. Liberty First Realty is a Limited Liability Company licensed in Oregon.

Executive Summary

Updated turnkey office, retail, professional building with upgraded features your staff & customers will appreciate. Open concept, fireplace, Forced Air heat and A/C. Ready to occupy. Street sign. Perfect space for professional office services such as Investment Firm, Insurance, Real Estate.



- Located in Tigard
- 1,200 +/- SqFt.
- 1 unit – Office/Professional/Retail
- 1.5 miles to US-217
- Highly walkable main street
- Across from Tri-met Transit/WES

| | |
|------------|---------|
| Rent | \$2,600 |
| SF/YR | \$26 |
| SF/MO | \$2.17 |
| Lease Type | NNN |

Executive Summary cont.

12290 SW Main St

Updated turnkey single occupant building with upgraded features your staff & customers will appreciate. Open concept, roll up frosted door to patio, fireplace, forced air heat, A/C. Ready to occupy. Street sign. Perfect space for professional office such as Investment Firm, Insurance, Real Estate. Excellent Retail location too. Bring your ideas to this in demand location.

The building is near many multi lane arteries, State Highways and Interstates.

Tigard provides access to many blue collar and degreed workers providing an ample selection of qualified employment candidates.



Property Highlights

Office | Professional | Retail

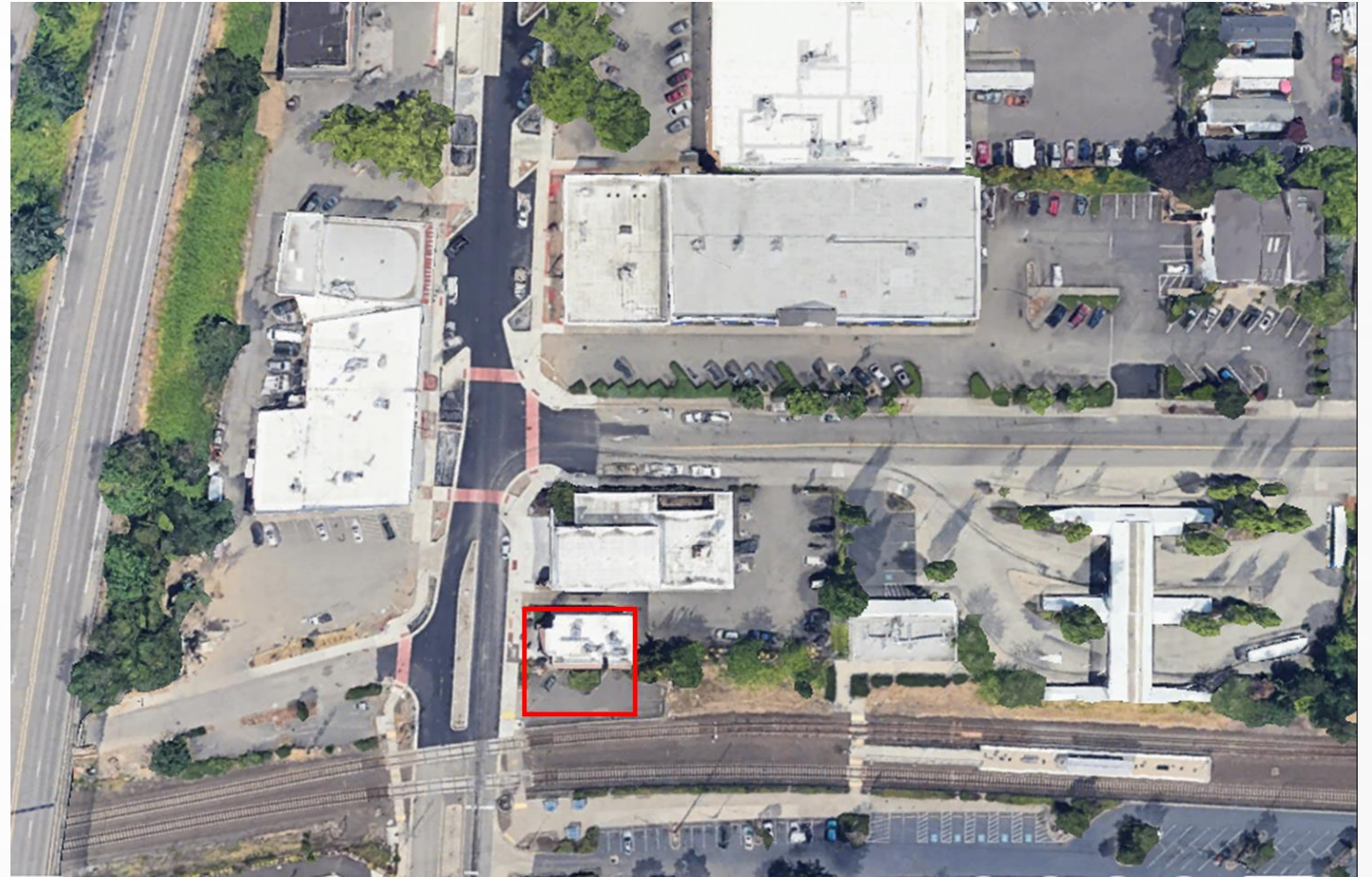
- Prime location
 - Major transportation arteries within 2 miles
 - Tri-met Transit/WES commuter train next door
 - unique Main St location with local shopping, mix of retail, dining and service opportunities
 - Highly walkable
- Ready to Work
 - Single detached building
 - Brick exterior
 - Street Signage
- Recent past improvements
 - Office updates including Open Concept, Offices, Patio, Roll up frosted door, fireplace, HVAC system.



Location

12290 SW Main St is located near local blue collar, tech center, professional employment hubs and abundant local and regional shopping, recreation and parks.

- Portland 9.5 miles
- Salem 40 miles
- PDX Airport 20 miles
- HIO Airport 14 miles
- Interstate 5 4 miles
- WES Station 0.1 miles



Market Area Information



- Tigard By The Numbers
- Transportation
- Census Numbers

Tigard By The Numbers

- ▶ 3,400 Businesses¹
- ▶ 45,000 Employees in Tigard²
- ▶ 3.2% Unemployment²

Tigard Demographics²

| | |
|---------------------------------|----------|
| Median Age: | 38 |
| Owner Occupied Housing: | 62.2% |
| Median Household Income: | \$101,35 |
| High School Graduate or Higher: | 94.9% |
| Bachelor Degree or Higher: | 47.9% |

² City of Tigard, US Census

¹ ABS, 2017, US Census

Distance from 12525 SW Main St

Cities

| | |
|---------------------------|--------|
| Portland (Portland State) | 9 mi |
| Salem (State Capital) | 40 mi |
| Corvallis (Oregon State) | 78 mi |
| Eugene (Univ of Oregon) | 105 mi |

Airports

| | |
|------------------------|-------|
| Hillsboro Regional | 14 mi |
| Portland International | 20 mi |
| Aurora State | 15 mi |

Recreational

| | |
|---------------------|-------|
| Oregon Wine Country | 17 mi |
| Langdon Farms Golf | 13 mi |
| Mt Hood Ski Areas | 63 mi |
| Oregon Coast | 79 mi |



Area Transportation

Connected to the Region

In Tigard it all starts at the WES Commuter Rail and Bus hubs. This local commuter train connects Hillsboro, Beaverton, Tigard, Portland, and areas beyond. Tigard, Tualatin and Wilsonville connect via Max and Tri-met hubs to the WES Commuter Rail and Bus routes. Commuters, shoppers and travelers alike enjoy a world class rail transportation system connecting to all corners of the region and international air travel. Commuter's and Residents enjoy end of line destinations to locations like Wilsonville, Hillsboro, Milwaukie, Portland International Airport, and Gresham. In between the end of line destinations lay transportation hubs with connecting bus and streetcar routes throughout downtown Portland and all remaining areas of the three counties it serves.



WES Commuter Rail



Contact Information

Offers and additional information:

Blue Roof Property Management, LLC
James White, Principal Broker 503-278-5342
james@blueroofpm.com

Website: BlueRoofPropertyManagement.com | Office: 503-420-8880 | Address: 8215 SW Tualatin Sherwood Rd, Suite 200, Tualatin OR 97062