


MEDICAL OFFICE SUITE FOR LEASE



 9631 N. Nevada Street
Spokane, WA 99218

Offered t
\$24 PSF
Full Service

ccimteam.com

Parcel: 36174.1603

NORTHPOINT MEDICAL BUILDING

Quality, multi-tenant, professional office/medical building located within North Spokane's Medical Corridor east of the Y. The building offers plenty of parking and a great tenant mix. Building amenities include an elevator, additional restrooms, drinking fountains, sitting area and large basement conference room.

Suite 205 is 1,788 square feet and features a reception area, waiting room, storage shelves, 6 private offices/exam rooms, breakroom/lab and a restroom. Lots of natural light overlooking the north lot. Leases are Full Service. Tenants responsible for their suite's janitorial. Monument signage available.



ROB KANNAPIEN
208.704.3832
robk@ccim.net

CORY EHRGOTT
509.499.9968
cory@kwiproperties.com



CCIMTEAM.COM

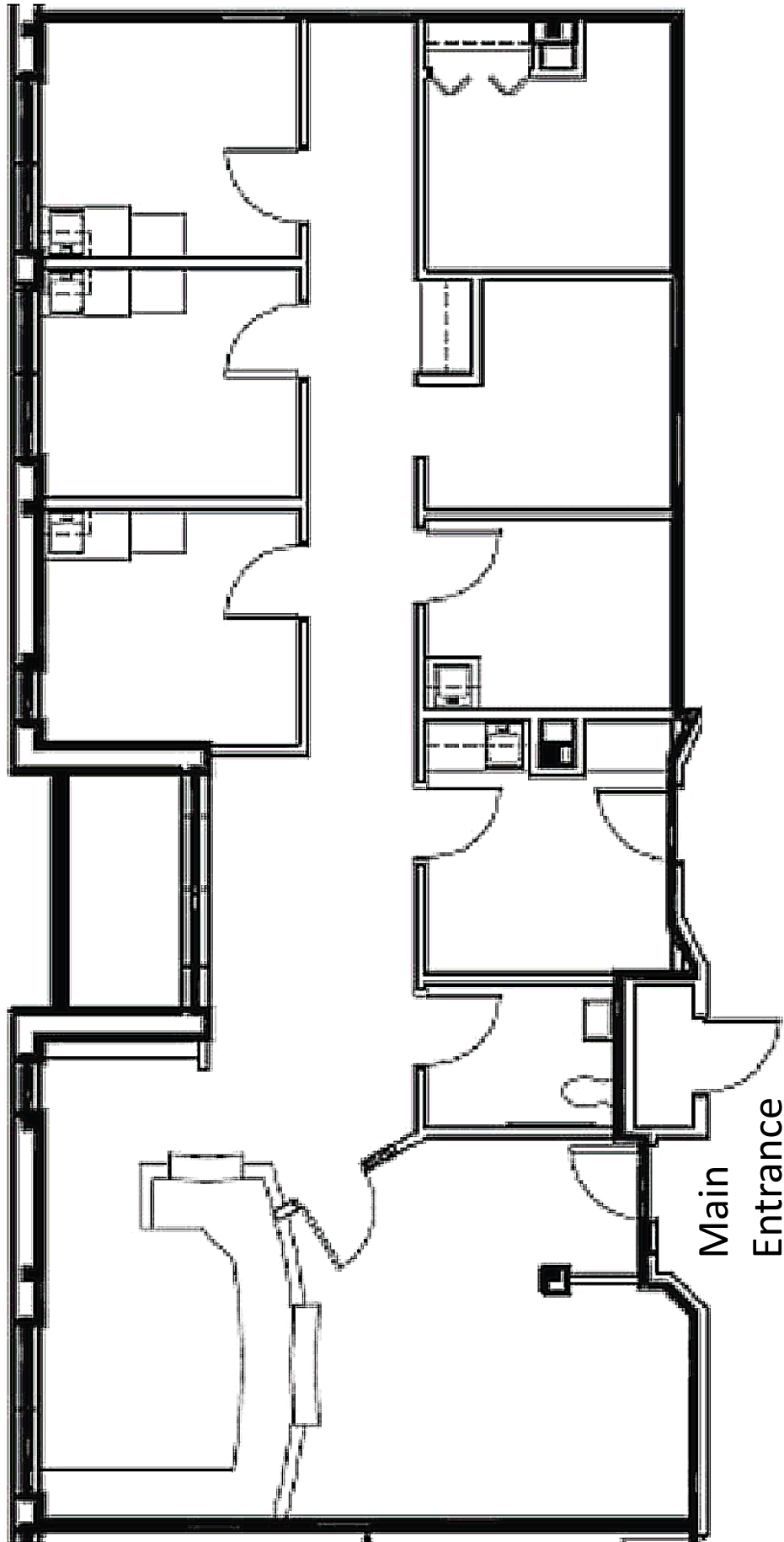


**COLDWELL BANKER
COMMERCIAL**
SCHNEIDMILLER REALTY
2000 Northwest Blvd
Coeur d'Alene, ID 83814





Exterior



ROB KANNAPIEN
CORY EHRGOTT

208.704.3832 robk@ccim.net

509.499.9968 cory@kwiproperties.com

CCIMTEAM.COM





E Holland Avenue

N Nevada Street



ROB KANNAPIEN
CORY EHRGOTT

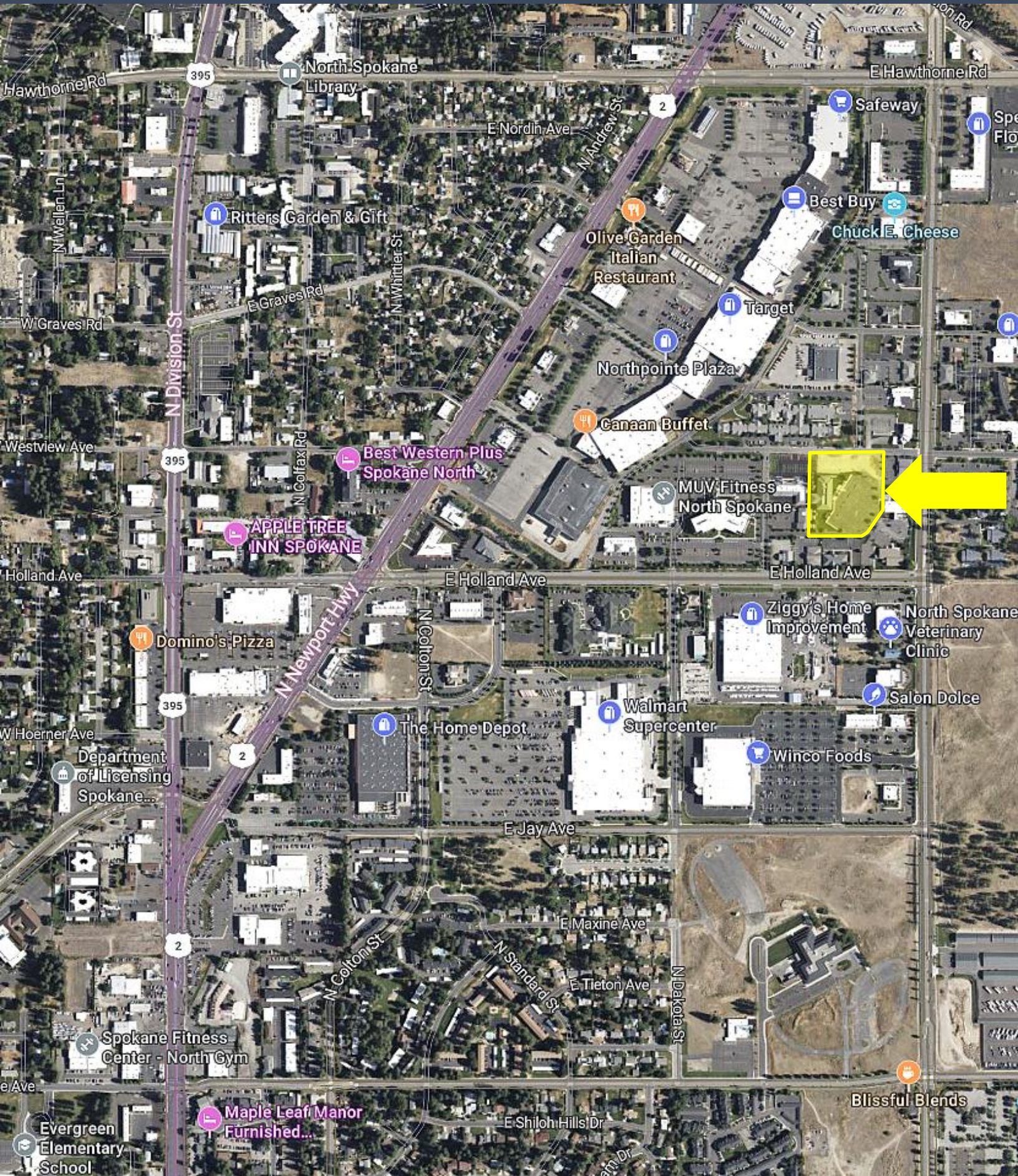
208.704.3832 robk@ccim.net

509.499.9968 cory@kwiproperties.com

CCIMTEAM.COM



**COLDWELL BANKER
COMMERCIAL**
SCHNEIDMILLER REALTY



ROB KANNAPIEN
CORY EHRGOTT

208.704.3832 robk@ccim.net

509.499.9968 cory@kwiproperties.com

CCIMTEAM.COM



COLDWELL BANKER COMMERCIAL
 SCHNEIDMILLER REALTY