

# 10 S. Crenshaw Avenue, Suite C

## Richmond, VA

### For Lease



### Features

- Available space—Suite C and a portion of the basement.
- Suite C consists of a large reception area, four additional rooms that vary in size and a restroom. See attached first floor drawing.
- Basement consists of a small section known as common area which has an additional restroom.
- Ideal for professional services; (law firm, financial advisor, accountant, etc.), photography, Art Gallery, Health/Wellness services (massage, acupuncture, etc) and many other uses.
- In addition to street parking, there is a parking deck across the street which offers monthly parking at an additional cost.
- Located just off of Cary Street and the area is in close proximity to restaurants, office, retail and residential.
- Lease price \$3,400/month



**Specter**  
Properties, Inc.

P.O. Box 2455  
Chesterfield, VA 23832  
(804) 777-7070

Principal Broker  
Mark B. Specter  
mspecter@specterproperties.com

Associate Broker  
Kevin Y. Specter  
kspecter@specterproperties.com

All information furnished to Specter Properties, Inc. is from sources judged to be reliable. However, no warranty or representation is made as to its accuracy or completeness. This applies to all pages within this document.

# 10 S. Crenshaw Avenue, Suite C

*Richmond, VA*

For Lease



Courtyard entrance to Suite C



Reception area



Upstairs restroom



Suite C—large room

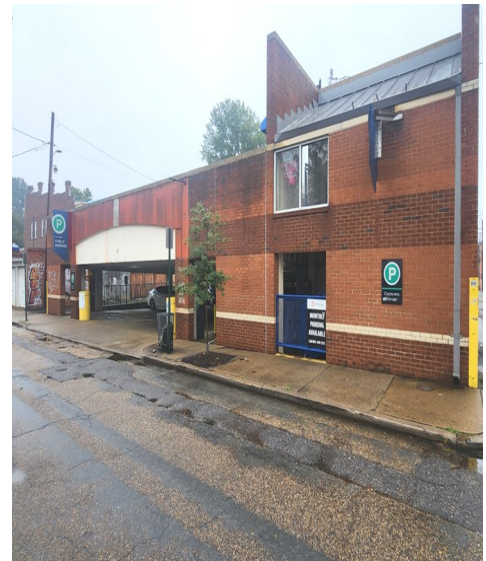
10 S. Crenshaw Avenue, Suite C

*Richmond, VA*

For Lease



Basement Common Area



Adjacent parking deck

All information furnished to Specter Properties, Inc. is from sources judged to be reliable. However, no warranty or representation is made as to its accuracy or completeness. This applies to all pages within this document.

# 10 S. Crenshaw Avenue, Suite C

*Richmond, VA*

For Lease

1st Floor—Suite C (highlighted)

