

BELMONT SHORE, LONG BEACH

WALKER'S  
PARADISE

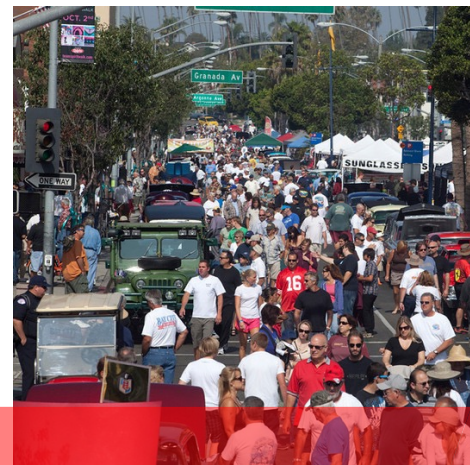
2ND STREET

Retail and Office Space



WILLIAM MORRIS  
COMMERCIAL

HOLLY BOUTELLE / 949.872.14108 / HOLLY@WMCRE.COM / 02145937  
TOLIVER MORRIS / 562.552.8874 / TOLIVER@WMCRE.COM / 01143250



## HEART OF BELMONT SHORE

## 5305 E. 2<sup>ND</sup>



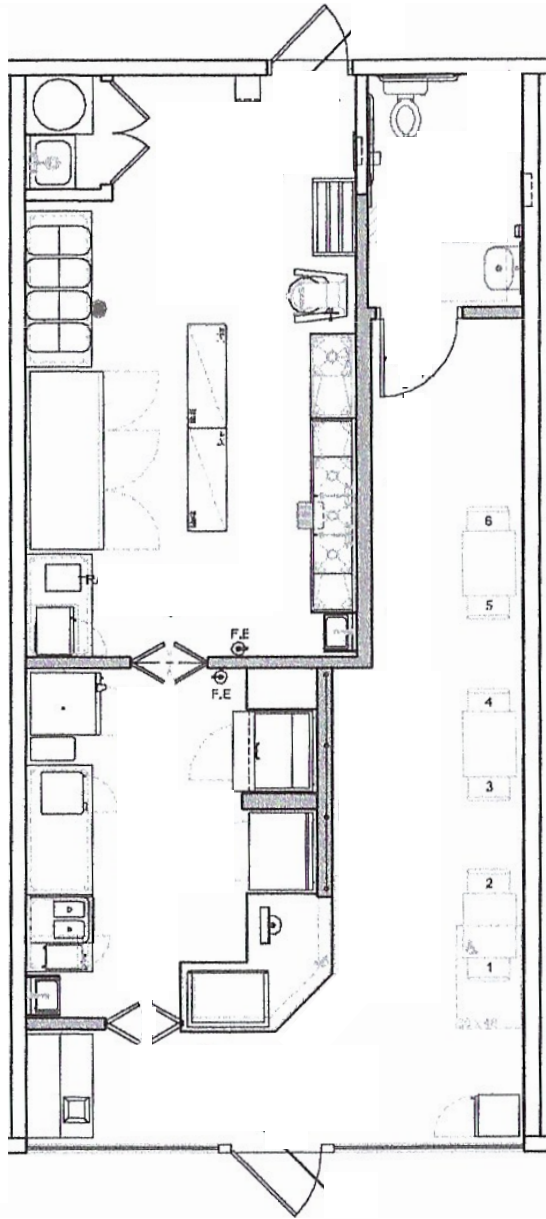
- High Foot Traffic
- Beach Community
- Corner Location
- On Site Parking
- High Identity
- 2<sup>nd</sup> St. Frontage
- Professional Bldg.
- Walker's Paradise
- 40,000 cars/day
- \$125k Med. Income

All information provided has been gathered from sources deemed reliable but is not guaranteed.



**HOLLY BOUTELLE** / 949.872.14108 / [HOLLY@WMCRE.COM](mailto:HOLLY@WMCRE.COM) / 02145937  
**TOLIVER MORRIS** / 562.552.8874 / [TOLIVER@WMCRE.COM](mailto:TOLIVER@WMCRE.COM) / 01143250

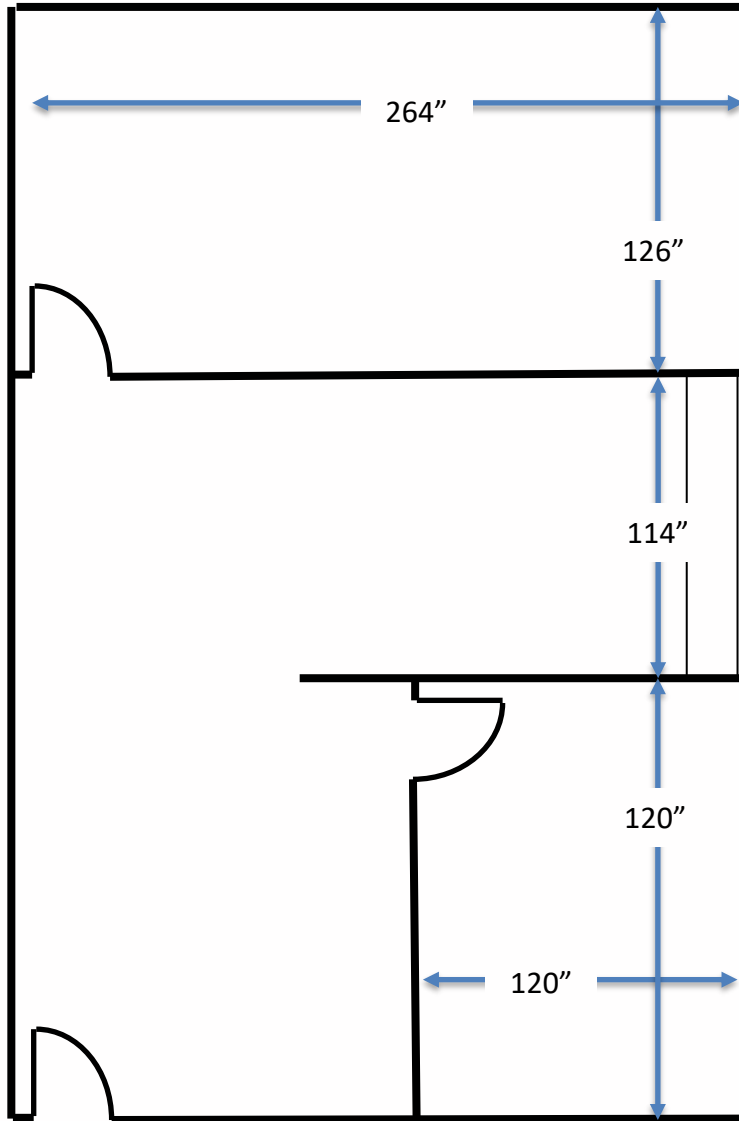




## Suite 103 5305 E 2<sup>nd</sup> St. Long Beach, Ca.

- 882 rsf
- New Build (2021)
- High Identity
- Heart of Belmont
- 2<sup>nd</sup> St. Frontage
- Eyebrow Signage
- Sunny Side of 2nd
- 40,000 cars/day
- \$125k Med. Income

DIMENSIONS ARE ESTIMATED. PLAN IS NOT TO SCALE.  
All information provided has been gathered from sources deemed reliable but is not guaranteed.



**Suite 205**  
**5305 E. 2<sup>nd</sup> St.**  
**Long Beach, Ca.**

- Great Window Line
- Wood Floor Entry
- Built-in Cabinets
- Lots of Glass
- Kitchen Area
- 3 Office Areas
- Open Work Space
- Approx. 750 sq. ft.
- Secure Building
- General Patio Area

DIMENSIONS ARE ESTIMATED. PLAN IS NOT TO SCALE.  
All information provided has been gathered from sources deemed reliable but is not guaranteed.

**BELMONT SHORE - 2<sup>ND</sup> ST RETAIL - 5305 2<sup>nd</sup>**



ROXIE'S CLEANERS  
SUPER MEX  
ROCKSTAR NAILS  
CAREFREE HAIR  
CREAMISTRY  
SCHOOLS FIRST

NICK'S ON 2ND  
GOYEN SUSHI  
LA CREPERIE  
ENGEL & VOLKERS  
AT&T  
JAMBA JUICE  
COFFEE BEAN

SWEET JILLS  
PARIS TAILOR  
SAGA BOUTIQUE  
SUNGLASS HUT  
MCCARTY'S  
BODY SHOP  
BANANA REP.

OPEN SESAME  
THE ALCOVE  
BUONA GENTE  
MONSTER  
OPTOMETRIC  
VERIZON

GAZETTE  
CONNECTED  
THE OUTLET  
DISCOVERY SHOP  
BELMONT SPA  
DIANE'S  
SEASIDE TRAVEL  
CITY LIGHTS  
EFFIE & CO  
FINGERS N TOES

STARBUCKS  
COLOR ME MINE  
FRANCESCA'S  
PAPYRUS  
WHITE & BLACK  
LUCKY BRANDS  
EURO WAX CTR  
SIMMZY'S

DEVYN'S  
GARDEN  
BELMONT NAIL  
CINNAHOLIC  
BOUBOUFFE  
SUSHI ON FIRE  
PANDOR  
RILEYS  
SHANNONS  
DOMENICO'S

WELLS FARGO  
BANK

PHILZ COFFEE  
FROSTED  
F&M BANK

BANK OF  
AMERICA

DEAN ANTHONY  
2<sup>ND</sup> ST PIZZA  
LIQUOR LOCKER

GEM NAIL SPA  
BELLA GELATO  
SUBWAY

2<sup>ND</sup> STREET



RUBIOS  
H&R BLOCK  
AROMA DI ROMA  
UPS STORE  
LA STRADA  
CITYOLOGY  
THAI GORMET  
SHEER PLEASURE

LAURENLY  
SHARA  
THE BELMONT  
SALUD  
GEM SHOE REPAIR  
LUNA

PANAMA JOES  
BELMONT BARBER  
TAP HOUSE  
LOVE STUFF  
RITE AID

CHASE

EL POLLO  
LOCO

ANGELO'S DELI  
BLUE WINDOWS  
LA BELLA SALON  
ROCKET FIZZ  
TILLY'S  
NORGE CLEANERS

GALLAGHERS  
RUNNERS HIGH  
LIQUORS  
LUTHER BURBANK

ELITE TAN  
@ SHUSHI  
ROE

WATCH & CLOCK  
ELISON RD.  
AROMA DI ROMA  
2<sup>ND</sup> OPTIQUE  
BLUE DIAMOND  
SWEET THREADS  
PUSSY & POOCH  
SAINT & SECOND

PIETRIS  
ACE HARDWARE  
O' MY SOLE  
HOUSE OF INTUITION  
MAGIC LAMP  
POKE POLA  
US POST OFFICE

JULIO'S MEX  
VANS  
LEGENDS  
PIZZA PRESS  
PEET'S COFFEE

RANCE'S PIZZA  
SUSHI AI  
NATRAJ INDIAN  
SANCHO'S TACOS

DOGZ  
THE BEACH  
FERNS GARDEN  
GEORGE'S GREEK  
TACO SURF  
SHORE BIZ CTR

All information provided has been gathered from sources deemed reliable but is not guaranteed.



**HOLLY BOUTELLE / 949.872.14108 / HOLLY@WMCRE.COM / 02145937**  
**TOLIVER MORRIS / 562.552.8874 / TOLIVER@WMCRE.COM / 01143250**