

Owner/User opportunity with
2 levels of secured parking



1857

S. KING ST

H O N O L U L U , H I 9 6 8 2 6

CBRE

AFFILIATED BUSINESS DISCLOSURE

© 2024 CBRE, Inc. (“CBRE”) operates within a global family of companies with many subsidiaries and related entities (each an “Affiliate”) engaging in a broad range of commercial real estate businesses including, but not limited to, brokerage services, property and facilities management, valuation, investment fund management and development. At times different Affiliates, including CBRE Global Investors, Inc. or Trammell Crow Company, may have or represent clients who have competing interests in the same transaction. For example, Affiliates or their clients may have or express an interest in the property described in this Memorandum (the “Property”) and may be the successful bidder for the Property. Your receipt of this Memorandum constitutes your acknowledgment of that possibility and your agreement that neither CBRE nor any Affiliate has an obligation to disclose to you such Affiliates’ interest or involvement in the sale or purchase of the Property. In all instances, however, CBRE and its Affiliates will act in the best interest of their respective client(s), at arms’ length, not in concert, or in a manner detrimental to any third party. CBRE and its Affiliates will conduct their respective businesses in a manner consistent with the law and all fiduciary duties owed to their respective client(s).

CONFIDENTIALITY AGREEMENT

Your receipt of this Memorandum constitutes your acknowledgment that (i) it is a confidential Memorandum solely for your limited use and benefit in determining whether you desire to express further interest in the acquisition of the Property, (ii) you will hold it in the strictest confidence, (iii) you will not disclose it or its contents to any third party without the prior written authorization of the owner of the Property (“Owner”) or CBRE, Inc. (“CBRE”), and (iv) you will not use any part of this Memorandum in any manner detrimental to the Owner or CBRE. If after reviewing this Memorandum, you have no further interest in purchasing the Property, kindly return it to CBRE.

DISCLAIMER

This Memorandum contains select information pertaining to the Property and the Owner and does not purport to be all-inclusive or contain all or part of the information which prospective investors may require to evaluate a purchase of the Property. The information contained in this Memorandum has been obtained from sources believed to be reliable, but has not been verified for accuracy, completeness, or fitness for any particular purpose. All information is presented “as is” without representation or warranty of any kind. Such information includes estimates based on forward-looking assumptions relating to the general economy, market conditions, competition and other factors which are subject to uncertainty and may not represent the current or future performance of the Property. All references to acreages, square footages, and other measurements are approximations. This Memorandum describes certain documents, including leases and other materials, in summary form. These summaries may not be complete nor accurate descriptions of the full agreements referenced. Additional information and an opportunity to inspect the Property may be made available to qualified prospective purchasers. You are advised to independently verify the accuracy and completeness of all summaries and information contained herein, to consult with independent legal and financial advisors, and carefully investigate the economics of this transaction and Property’s suitability for your needs.

ANY RELIANCE ON THE CONTENT OF THIS MEMORANDUM IS SOLELY AT YOUR OWN RISK.

The Owner expressly reserves the right, at its sole discretion, to reject any or all expressions of interest or offers to purchase the Property, and/or to terminate discussions at any time with or without notice to you. All offers, counteroffers, and negotiations shall be non-binding and neither CBRE, Inc. nor the Owner shall have any legal commitment or obligation except as set forth in a fully executed, definitive purchase and sale agreement delivered by the Owner. CMPM 1857 S King St_BRO_Paulic_v04_TLJ Folder 09/18/24



1857

S KING ST

-
- 01 Executive Summary
 - 02 Property Description
 - 03 Location Overview
 - 04 Market Overview

CONTENTS

1857

S. KING ST

01

EXECUTIVE
SUMMARY

CBRE is pleased to present a versatile 3-story office building located at 1857 S King St.



ASKING PRICE: \$6,500,000

CBRE is pleased to present a versatile 3-story office building located at 1857 S King St. This property is optimally suited for various uses such as owner occupation, redevelopment, medical facilities, or re-leasing opportunities. The building, which was constructed in 1993, boasts an impressive 13,458 sq ft area on a 0.14-acre land parcel. Features two levels of secured parking totaling approximately 32 stalls.

The property's adaptability extends to accommodate both office and retail purposes, providing potential buyers with a great range of possibilities. Its prime location on a major road in Honolulu adds to its appeal, with easy access to the freeway making it an excellent choice for businesses desiring prominent visibility and accessibility.

Further enhancing its location advantage, the property is in close proximity to several key areas like UH Manoa, the vibrant Ala Moana Shopping Mall, Waikiki, and the bustling downtown area. This ensures visibility from diverse demographic segments, thereby increasing the property's potential for success.

The property is zoned as BMX-3, which refers to the Business Mixed Use District. This zoning permits a wide range of commercial and residential uses, further enhancing the property's versatility. Overall, this property offers a unique opportunity for businesses looking for a flexible space potential for an investor, owner-user, or redevelopment.



INVESTMENT HIGHLIGHTS



3rd level built out as turn-key restaurant with all FF&E included in addition to two 750 gallon grease traps and hood/exhaust system.



- + **Versatile Use:** The property's flexible design allows for various uses such as owner occupation, redevelopment, medical facilities, or re-leasing opportunities.
- + **Prime Location:** Located on a major road in Honolulu, the property is easily accessible and offers high visibility, ideal for businesses seeking prominence.
- + **Proximity to Key Areas:** The property is close to UH Manoa, Ala Moana, Waikiki, and downtown, ensuring footfall and visibility from diverse demographic segments.
- + **Flexible Zoning:** With BMX-3 zoning, the property permits a wide range of commercial and residential uses, enhancing its adaptability.
- + **Spacious and Modern:** Constructed in 1993, the 3-story office building offers an impressive 13,458 sq ft area on a 0.14-acre land parcel.
- + 3rd level built out as turn-key restaurant with all FF&E included in addition to two 750 gallon grease traps and hood/exhaust system.
- + New chiller installed in 2024

1857

S. KING ST

02

PROPERTY
DESCRIPTION

PROPERTY OVERVIEW



ADDRESS
1857 S KING STREET,
HONOLULU, HI 96826



**MARKET/
SUBMARKET**
HONOLULU, HI



TMK
1-2-3-028-016



SQUARE FOOTAGE
13,458 SF



LOT SIZE
0.14 ACRES



ZONING
BMX-3
(BUSINESS MIXED-USE)



TENURE
FEE SIMPLE



YEAR BUILT
1993



PARKING
2 LEVELS OF SECURED
PARKING TOTALING
32 SPACES

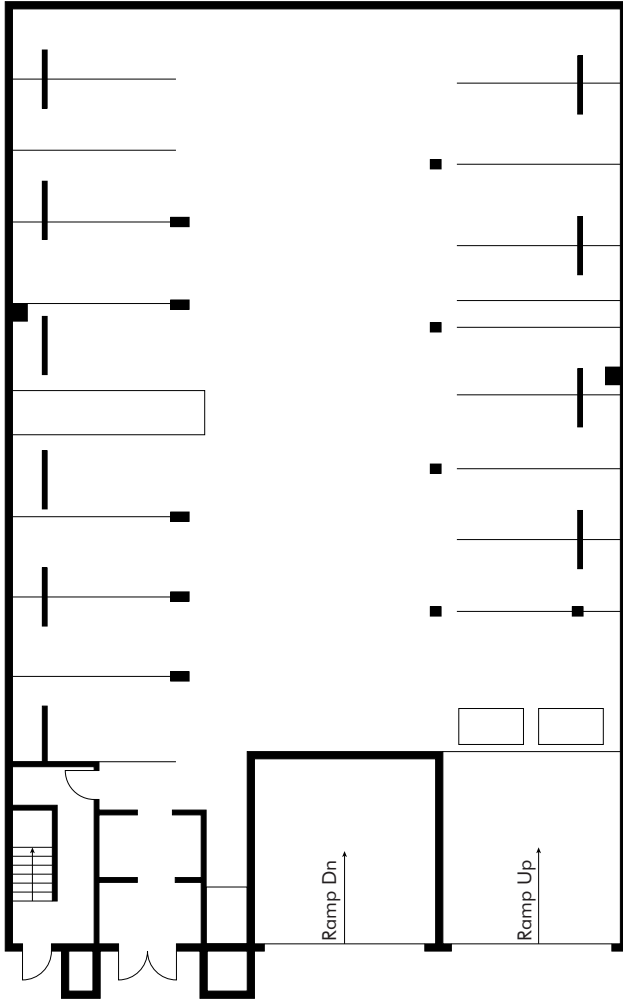


OCCUPANCY
VACANT

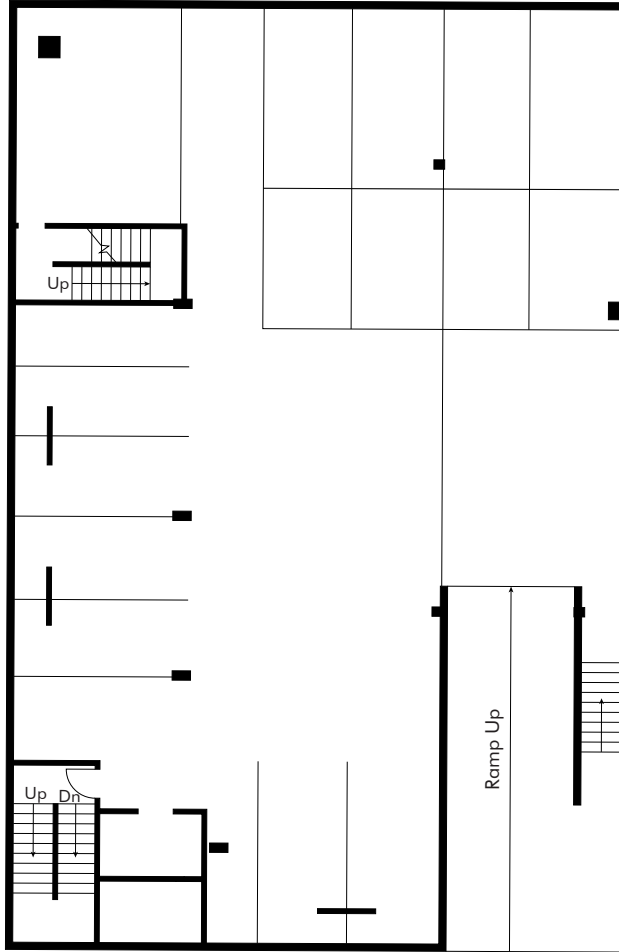


ANNUAL TAX
\$56,881 (2023)

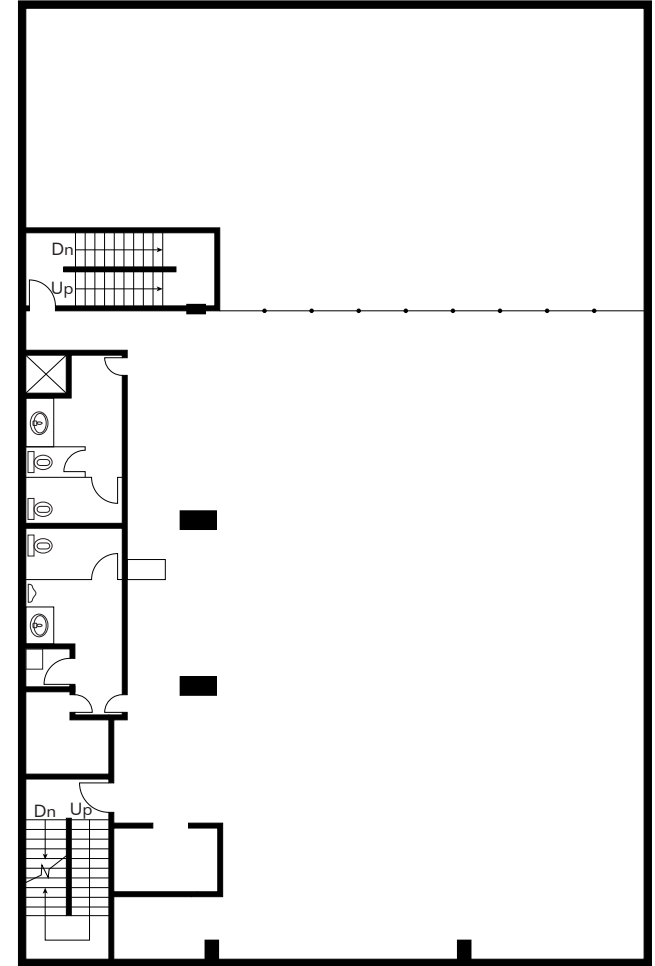




1ST LEVEL PARKING



2ND LEVEL PARKING



TYPICAL LOFT FLOOR PLAN

1857

S. KING ST

03

LOCATION
OVERVIEW



DEMOGRAPHIC COMPREHENSIVE	1 MILE		2 MILES		3 MILES	
POPULATION						
2024 Population - Current Year Estimate	76,874		234,043		314,595	
2024 Population - Current Year Estimate	78,043		237,932		318,181	
2029 Population - Five Year Projection	76,193		233,221		314,933	
2020 Population - Census	76,505		224,704		302,247	
2010 Population - Census	0.21%		0.08%		-0.03%	
2020-2024 Annual Population Growth Rate	0.30%		0.33%		0.23%	
2024-2029 Annual Population Growth Rate	00.0%		00.0%		00.0%	
HOUSEHOLD INCOME						
2024 Households - Current Year Estimate	39,176		103,375		125,715	
2029 Households - Five Year Projection	40,034		106,076		128,417	
2010 Households - Census	38,745	83.5%	97,159	86.0%	118,361	87.1%
2020 Households - Census	38,859		102,721		125,251	
2020-2024 Compound Annual Household Growth Rate	0.19%		0.15%		0.09%	
2024-2029 Annual Household Growth Rate	0.43%		0.52%		0.43%	
2024 Average Household Size	1.93		2.19		2.43	
RACE AND ETHNICITY						
2024 Population	76,874		234,043		314,595	
White	14,054	18.3%	41,519	17.7%	48,434	15.4%
Black or African American	1,276	1.7%	3,046	1.3%	3,514	1.1%
Asian	40,389	52.5%	122,140	52.2%	171,755	54.6%
American Indian or Alaska Native	199	0.3%	515	0.2%	592	0.2%
Pacific Islander	5,982	7.8%	19,032	8.1%	29,309	9.3%
Other Race	1,261	1.6%	3,179	1.4%	3,740	1.2%
Two or More Races	13,711	17.8%	44,612	19.1%	57,251	18.2%

©2024 CBRE. This information has been obtained from sources believed reliable. We have not verified it and make no guarantee, warranty or representation about it. Any projections, opinions, assumptions or estimates used are for example only and do not represent the current or future performance of the property. You and your advisors should conduct a careful, independent investigation of the property to determine to your satisfaction the suitability of the property for your needs. Source: Esri

You are solely responsible for independently verifying the information in this confidential memorandum. ANY RELIANCE ON IT IS SOLELY AT YOUR OWN RISK.

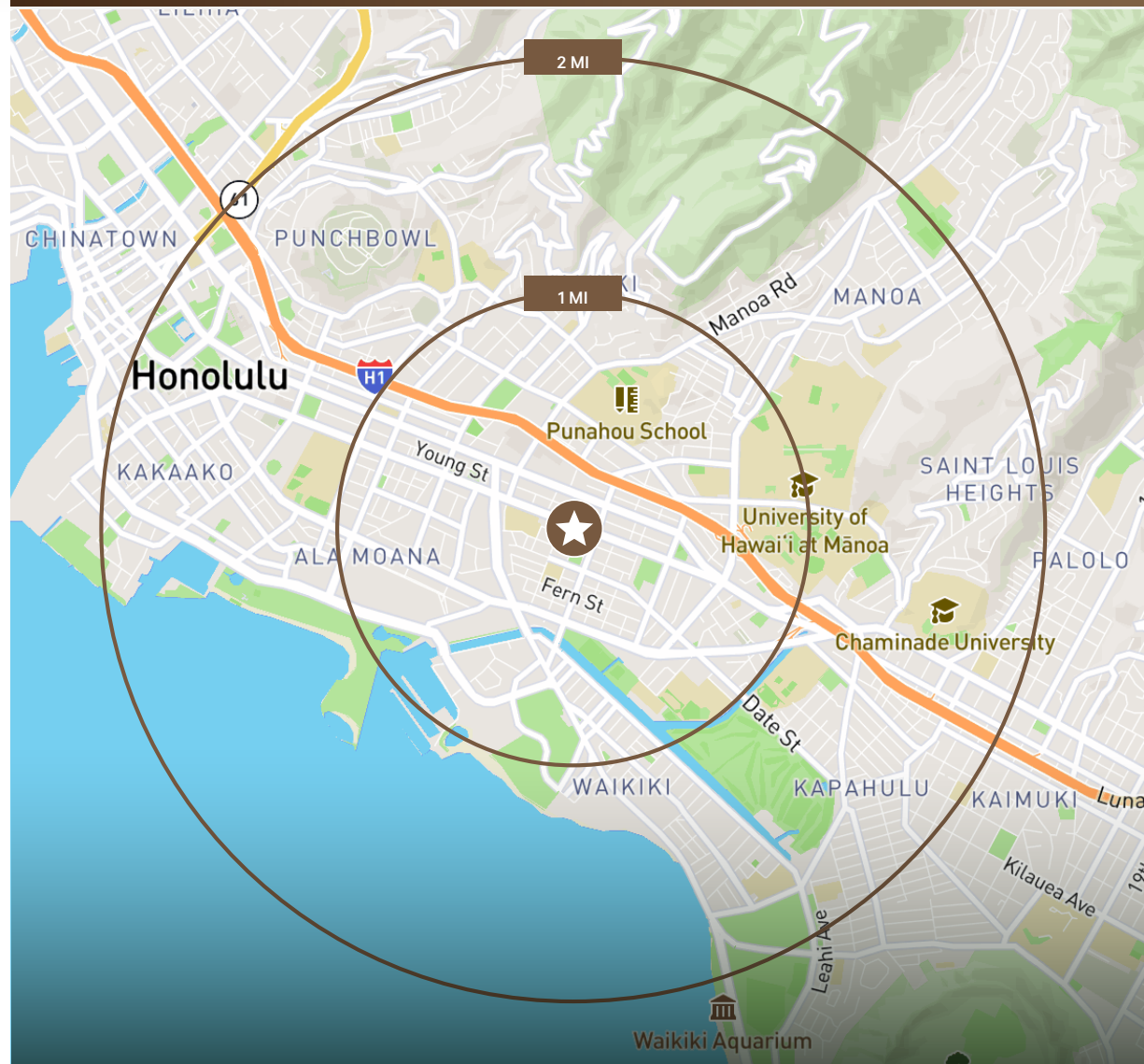
Honolulu, the vibrant capital city of Hawaii, is strategically positioned on the island of Oahu. It plays a crucial role on the global stage as an influential center for international business and military defense. The city is renowned for its multicultural diversity, which is prominently reflected in its unique food, culture, and customs. This diversity is mirrored in its demographic composition, with Asians and Pacific Islanders comprising a significant portion of the population.

The city's pulsating economy is largely powered by tourism. It draws millions of tourists from around the globe each year, who flock to its popular attractions such as the lively Waikiki beach area and the extinct volcanic cone, Diamond Head. The latter provides awe-inspiring views of both the city and the ocean, making it a must-visit spot.

Downtown Honolulu, an area teeming with towering skyscrapers, government offices, and art galleries, marks the historical and commercial core of the city. This district houses most of the city's high-rise structures and is the center of its bustling economic activities.

Education is a significant part of the city, with the University of Hawaii at Manoa being a key player. It's recognized for its exceptional programs across various disciplines, contributing to the city's intellectual wealth.

Honolulu, the vibrant capital city of Hawaii, is strategically positioned on the island of Oahu.



1857

S. KING ST

04

MARKET
OVERVIEW







NICHOLAS PAULIC (B)
Senior Vice President
+1 808 541 5108
Lic. RB-22952
nicholas.paulic@cbre.com

AJ CORDERO (B)
Vice President
+1 808 541 1111
Lic. RB-24096
aj.cordero1@cbre.com

1857

S . K I N G S T R E E T

© 2024 CBRE, Inc. All rights reserved. This information has been obtained from sources believed reliable but has not been verified for accuracy or completeness. You should conduct a careful, independent investigation of the property and verify all information. Any reliance on this information is solely at your own risk. CBRE and the CBRE logo are service marks of CBRE, Inc. All other marks displayed on this document are the property of their respective owners, and the use of such logos does not imply any affiliation with or endorsement of CBRE. Photos herein are the property of their respective owners. Use of these images without the express written consent of the owner is prohibited. CPM 1857 S King St_BRO_Paulic_v04_TLJ Folder 09/18/24

