



# Weston Commerce Center

1625 North Commerce Parkway  
Weston, FL 33326

## RENTAL RATE

\$26.50  
psf NNN

\$14.20  
Opex psf  
(net of electric & janitorial)

### Greg Martin

Principal, Managing Director  
(954) 903-1815

[greg.martin@avisonyoung.com](mailto:greg.martin@avisonyoung.com)

### Justin Cope, SIOR

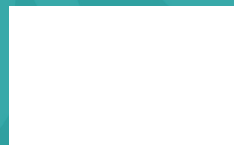
Principal  
(954) 903-3701

[justin.cope@avisonyoung.com](mailto:justin.cope@avisonyoung.com)

### Lisa Blumer, CCIM

Principal  
(954) 903-3703

[lisa.blumer@avisonyoung.com](mailto:lisa.blumer@avisonyoung.com)





# Amenities



## Individually Metered

Separate electric metering allows for efficient energy management and cost control



## Private Restrooms

Each suite is equipped with its own restroom for tenant convenience



## Abundant Parking

Generous 4.0/1,000 SF parking ratio ensures ease for tenants and visitors



## Proximity to Airport

Just 25 minutes from Fort Lauderdale-Hollywood International Airport for convenient travel access



## Transportation Access

Strategically positioned with direct access to I-75, the Sawgrass Expressway, and I-595



### Greg Martin

Principal, Managing Director  
(954) 903-1815

[greg.martin@avisonyoung.com](mailto:greg.martin@avisonyoung.com)

### Justin Cope, SIOR

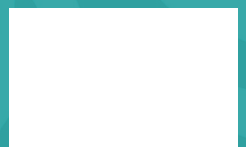
Principal  
(954) 903-3701

[justin.cope@avisonyoung.com](mailto:justin.cope@avisonyoung.com)

### Lisa Blumer, CCIM

Principal  
(954) 903-3703

[lisa.blumer@avisonyoung.com](mailto:lisa.blumer@avisonyoung.com)





# Gallery



## Greg Martin

*Principal, Managing Director*

(954) 903-1815

[greg.martin@avisonyoung.com](mailto:greg.martin@avisonyoung.com)

## Justin Cope, SIOR

*Principal*

(954) 903-3701

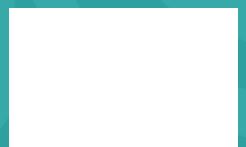
[justin.cope@avisonyoung.com](mailto:justin.cope@avisonyoung.com)

## Lisa Blumer, CCIM

*Principal*

(954) 903-3703

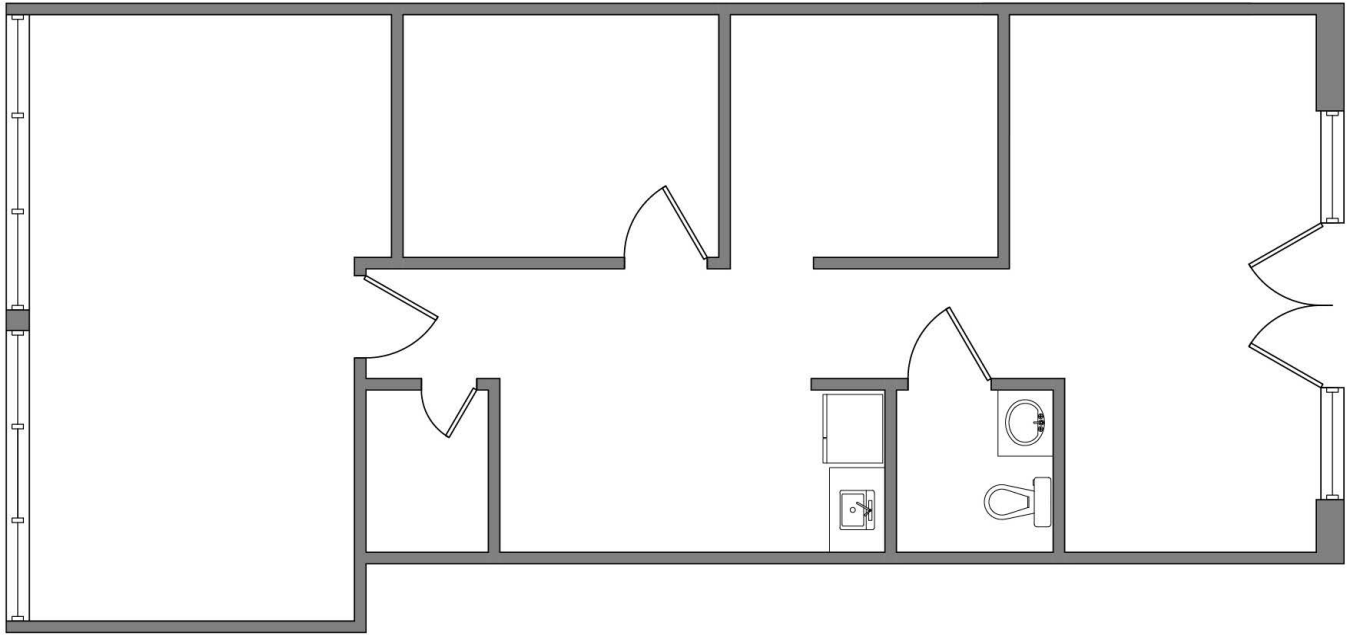
[lisa.blumer@avisonyoung.com](mailto:lisa.blumer@avisonyoung.com)





# Suite 215

1,085 SF



## Greg Martin

Principal, Managing Director

(954) 903-1815

greg.martin@avisonyoung.com

## Justin Cope, SIOR

Principal

(954) 903-3701

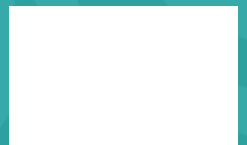
justin.cope@avisonyoung.com

## Lisa Blumer, CCIM

Principal

(954) 903-3703

lisa.blumer@avisonyoung.com



# Surrounding Area

## Financial

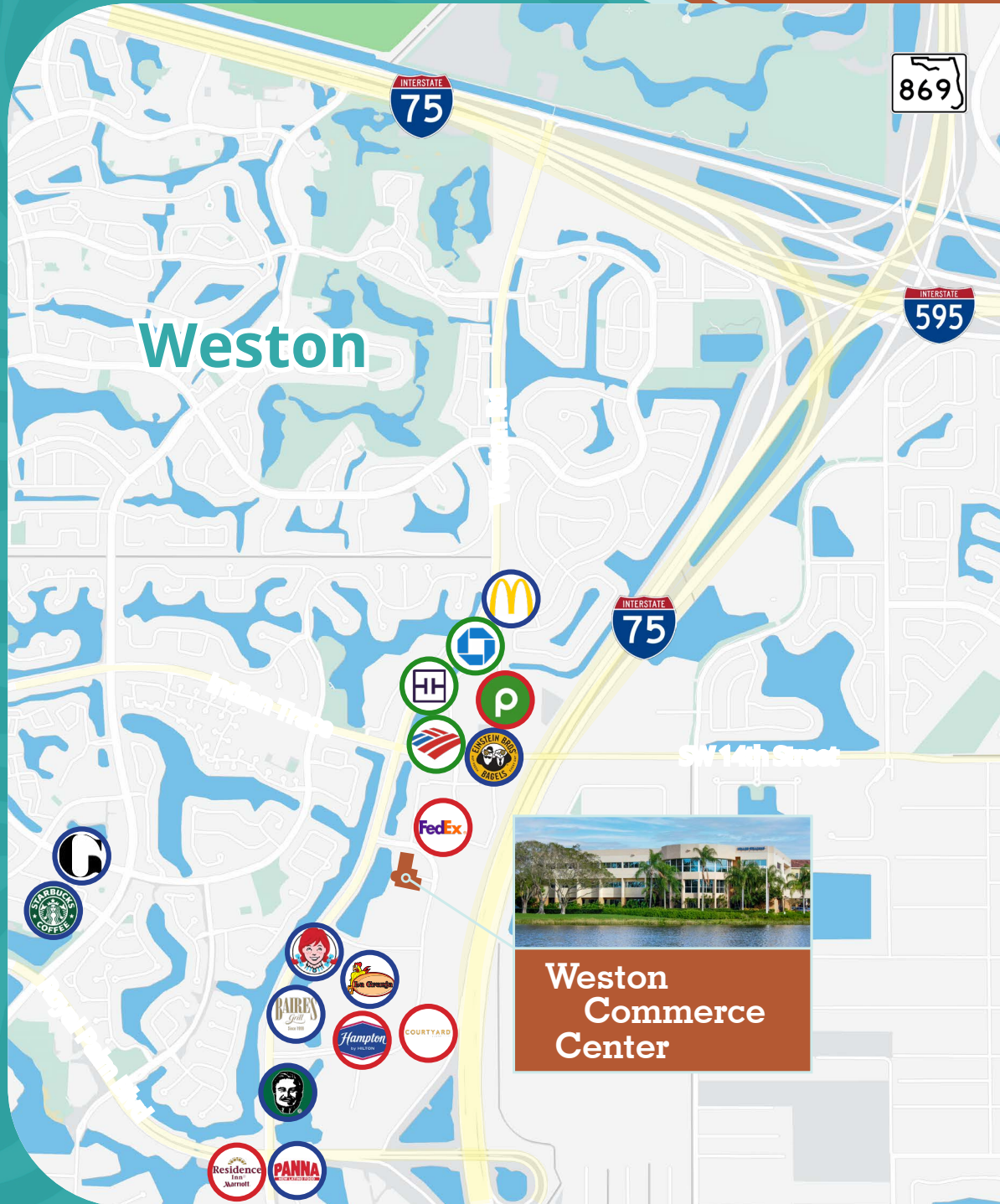
Chase  
Truist  
Bank of America

## Restaurants

Starbucks  
McDonald's  
Graziano's  
Wendy's  
Baires Grill  
La Granja  
Flanigan's  
Panna  
Einstein Bros. Bagels

## Miscellaneous

Publix  
Courtyard by Marriott  
Hampton Inn  
Residence Inn  
FedEx



## Greg Martin

Principal, Managing Director  
(954) 903-1815  
greg.martin@avisonyoung.com

## Justin Cope, SIOR

Principal  
(954) 903-3701  
justin.cope@avisonyoung.com

## Lisa Blumer, CCIM

Principal  
(954) 903-3703  
lisa.blumer@avisonyoung.com

