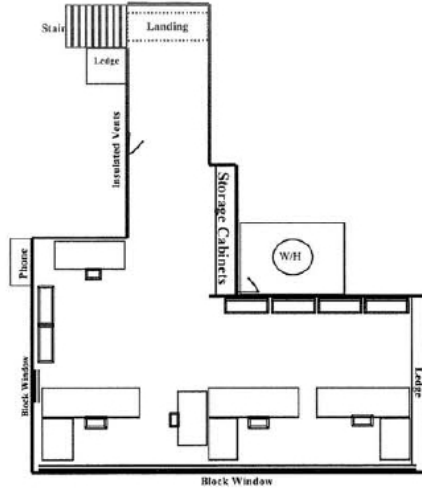


22974 EL TORO ROAD

LAKE FOREST, CA 92630

FIRST FLOOR

±2,545 SQ. FT.

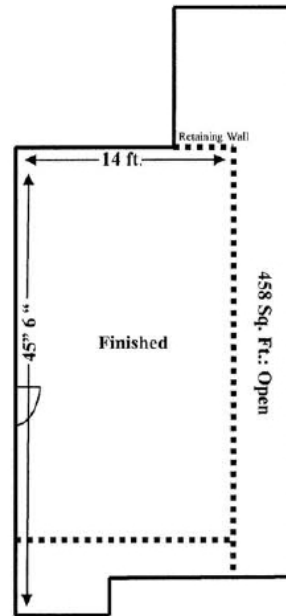


SECOND FLOOR MEZZANINE

±633 SQ. FT.

STOREROOM

±1,111 SQ. FT.
(653 SQ. FT. FINISHED)



22974 EL TORO ROAD

LAKE FOREST, CA 92630



LEE & ASSOCIATES
COMMERCIAL REAL ESTATE SERVICES

ORANGE COUNTY
COMMERCIAL REAL ESTATE GROUP

TRAVIS BARNETT
Associate
CalDRE 02069500
949.790.3145
tbarnett@leeirvine.com

BROCK STRYKER
Senior Vice President
CalDRE 01928271
949.790.3131
bstryker@leeirvine.com

GUY LAFERRARA
Senior Vice President
CalDRE 01012355
949.790.3115
glaferrara@leeirvine.com

22974 EL TORO ROAD

LAKE FOREST, CA 92630



LEE & ASSOCIATES
COMMERCIAL REAL ESTATE SERVICES

ORANGE COUNTY
COMMERCIAL REAL ESTATE GROUP

TRAVIS BARNETT
Associate
CalDRE 02069500
949.790.3145
tbarnett@leeirvine.com

BROCK STRYKER
Senior Vice President
CalDRE 01928271
949.790.3131
bstryker@leeirvine.com

GUY LAFERRARA
Senior Vice President
CalDRE 01012355
949.790.3115
glaferrara@leeirvine.com