



**1895**

**AT HOLLADAY  
HILLS**

**FOR LEASE**

1895

**1895 E. RODEO WALK DRIVE, HOLLADAY, UT**

**Presented by**



**WOODBURY**  
CORPORATION



# PROPERTY DETAILS

Holladay Hills is a **58-acre**, true upscale **mixed-use** development in the heart of Holladay

The project offers **772,000 SF of commercial space**, **614 residential units**, walking paths, and plaza space

1895 features 120,000 SF of office on two stories with 60,000 SF of retail on the ground floor

**66,138 RSF of office available** on floors two and three

Starting at **\$36.00/sf** full service

13' Clear ceiling height

Kiln provides unmatched tenant growth options and amenities not available in most buildings

**Amenities include** on-site fitness facility, bike storage, event space, café and marketplace, meeting rooms, showers, video booths, coffee and beverage station, AV-equipped conference and training rooms

Site is **now open** and ready for tenant buildouts





# TENANTS ON SITE

kiln.



*Bobby's*  
BURGERS  
*by Bobby Flay*

V / O m e d  
s p a



CHASE 

ARHAUS<sup>®</sup>

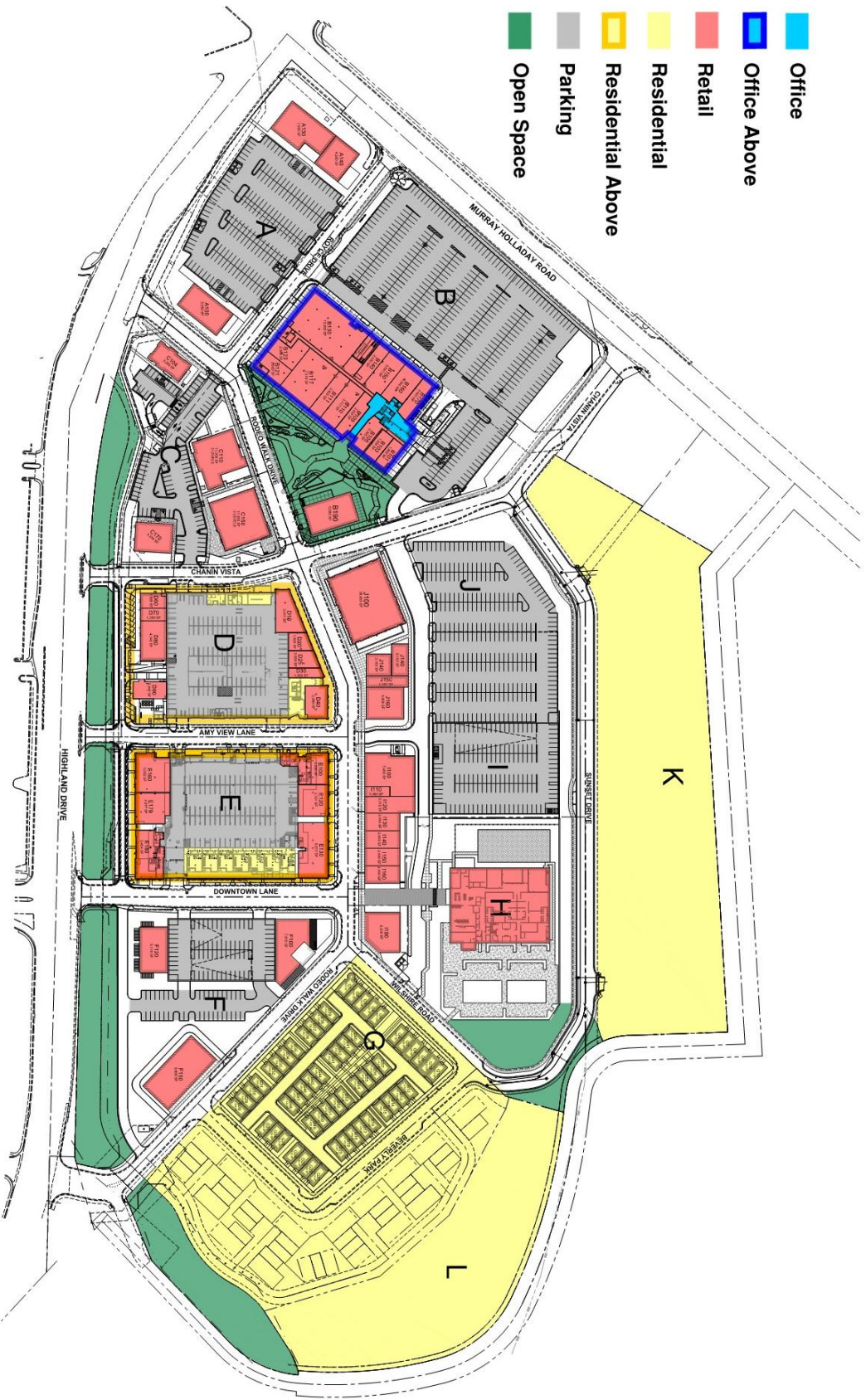
**LIFETIME**<sup>®</sup>  
**FITNESS**

*MilkShake*<sup>®</sup>  
EST FACTORY 1914

  
roth living

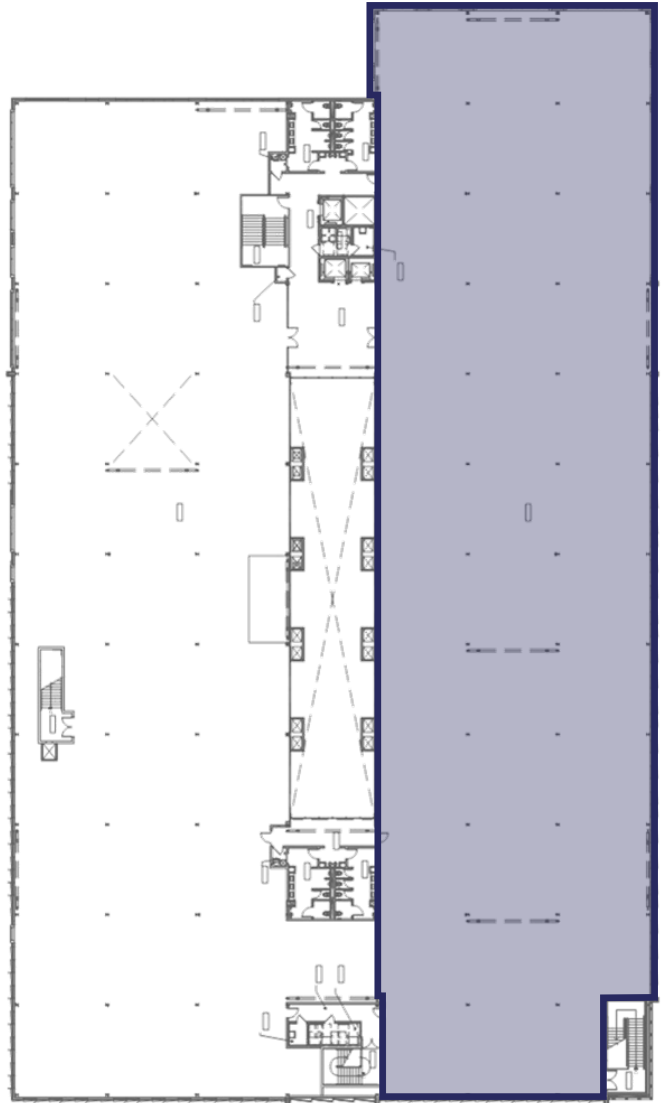
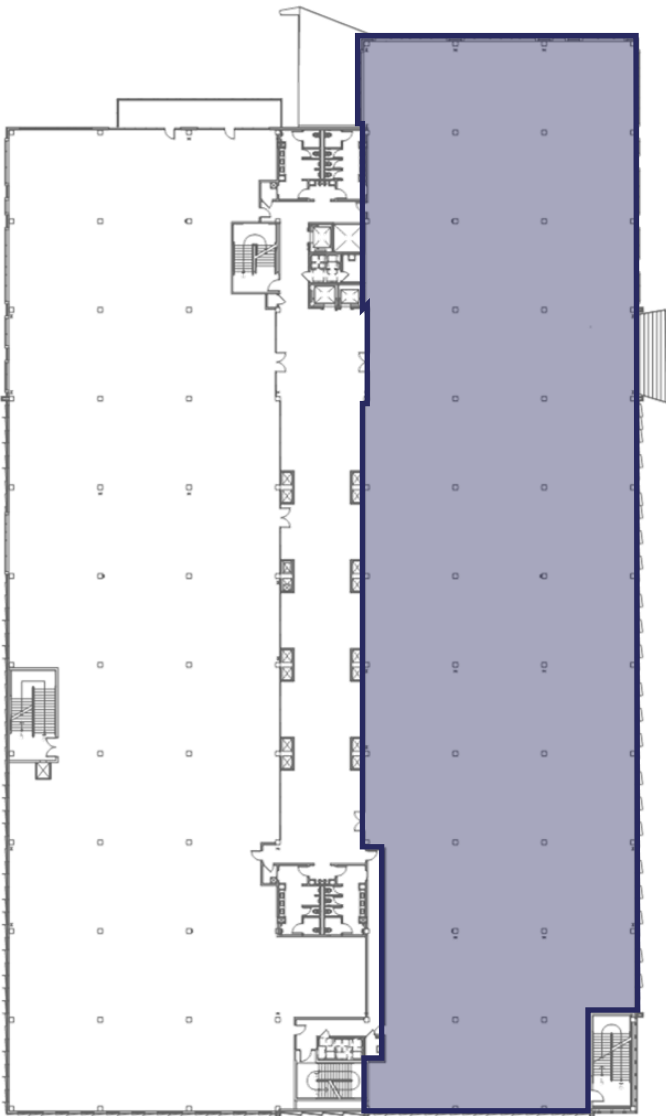
## MANY MORE TO COME

# HOLLADAY HILLS MASTER PLAN



# FLOOR PLANS

**2<sup>nd</sup> Floor**  
**32,930 RSF**



**3<sup>rd</sup> Floor**  
**33,208 RSF**





**Steve Peterson**

steve@millrock.net

(801) 550-5120

**Spencer Wixom**

s\_wixom@woodburycorp.com

(801) 633-3891

