



REDHAWK RETAIL

PROJECT DETAILS

REDHAWK RETAIL • MULTIPLE OUTPARCELS AVAILABLE FOR LEASE • RETAIL

AVAILABLE SPACE

OP 1 - 1.05 acres
OP 2 - 1.71 acres
Retail - ±13,000 SF

TRAFFIC COUNTS

13,500 ADT on S New Hope Rd

PROPERTY HIGHLIGHTS

- The location is part of Lennar's new development, Redhawk, a 16.5 acre grocery-anchored site that will include 1,271 townhomes and single family homes.
- Cramerton, which is a suburb of Charlotte, North Carolina has seen a 3.91% population increase since the most recent census.
- Future roadway improvements to S New Hope Road include widening into a four-lane road, from Titman Road to Union Road.
- In very close proximity to the Del Web 55+ community that includes 809 single family homes.

LEASE RATE

Call to discuss

COUNTY

Gaston



DEMOGRAPHICS

3 MILES

5 MILES

7 MILES

TOTAL HOUSEHOLDS

15,441

38,239

67,132



TOTAL POPULATION

37,399

92,338

163,884

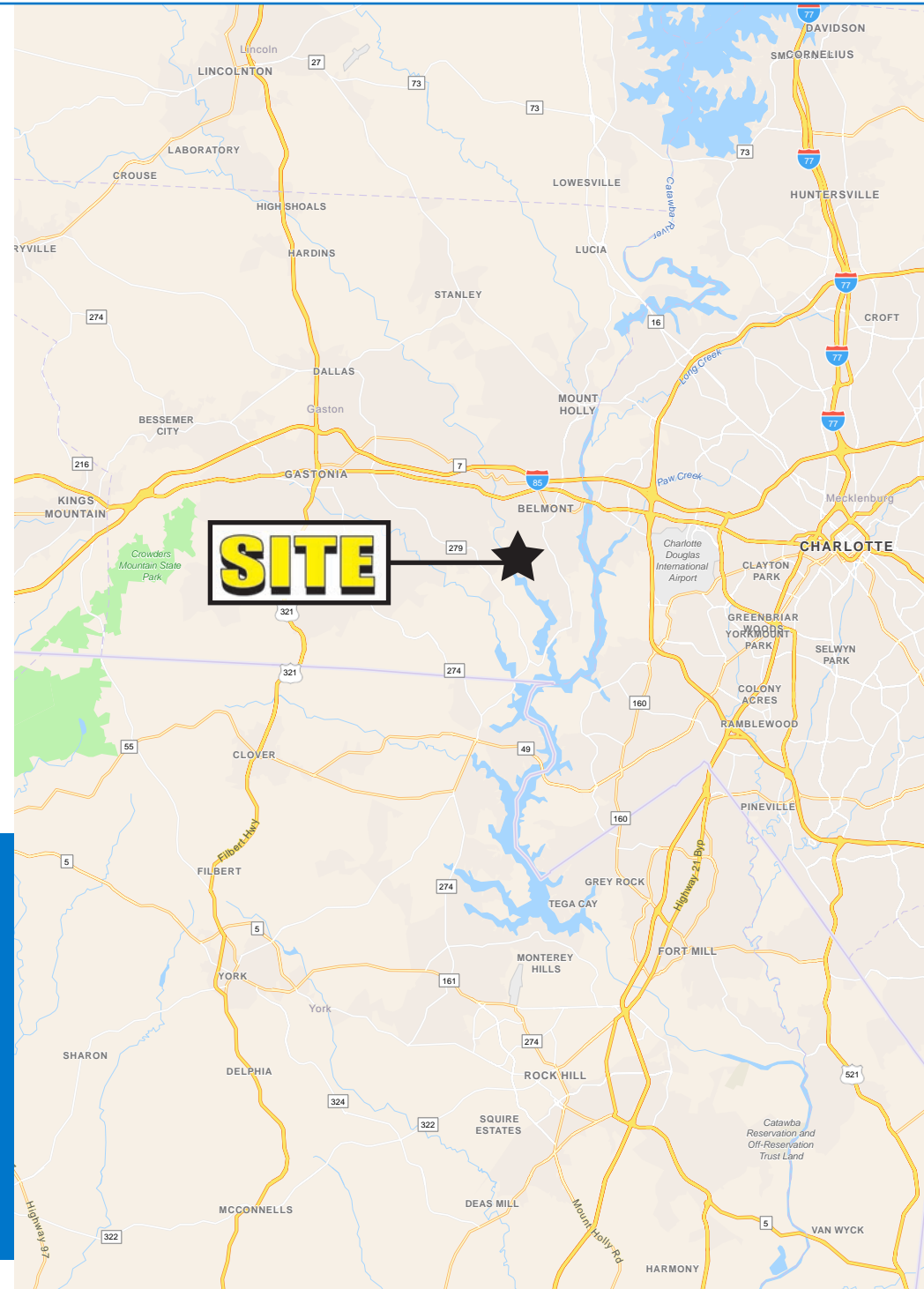


MEDIAN HH INCOME

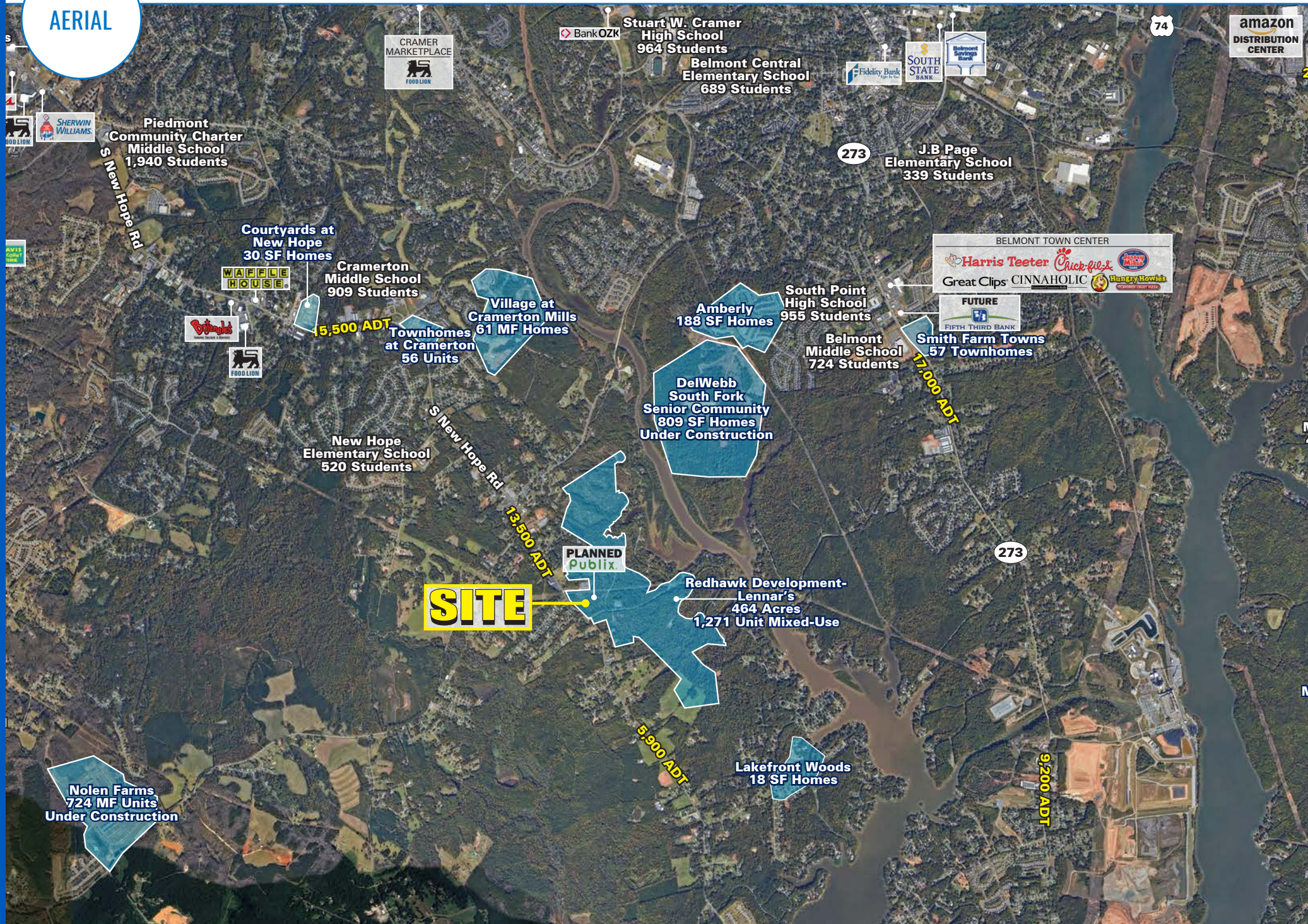
\$94,958

\$86,431

\$80,443



AERIAL



AERIAL

Village at
Cramerton Mills
61 MF Homes

Belmont
Middle School
724 Students

Smith Farm Towns
57 Townhomes

DelWebb
South Fork
Senior Community
809 SF Homes
Under Construction

New Hope
Elementary School
520 Students

13,500 ADT

SITE

PLANNED
Publix

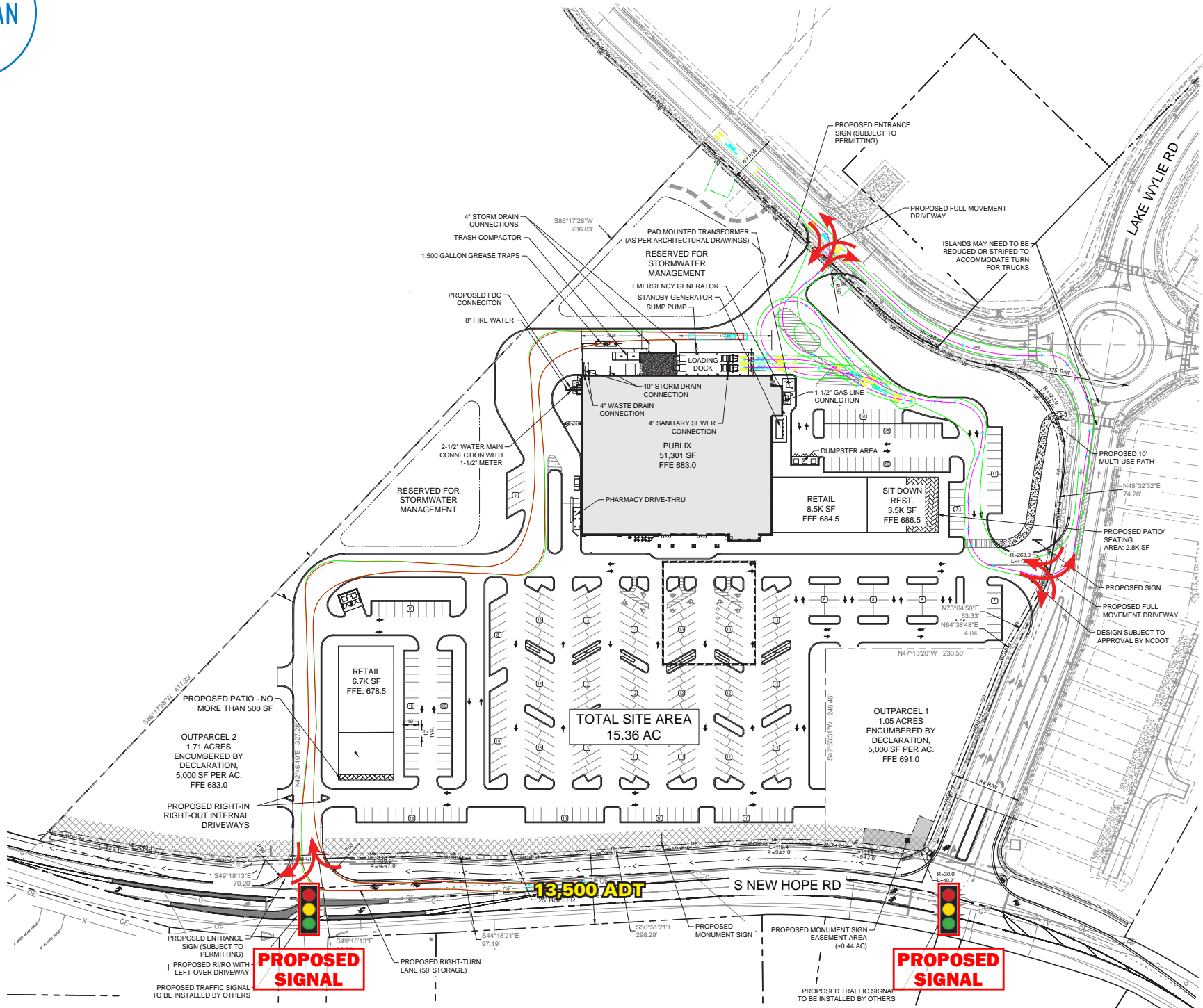
5,900 ADT

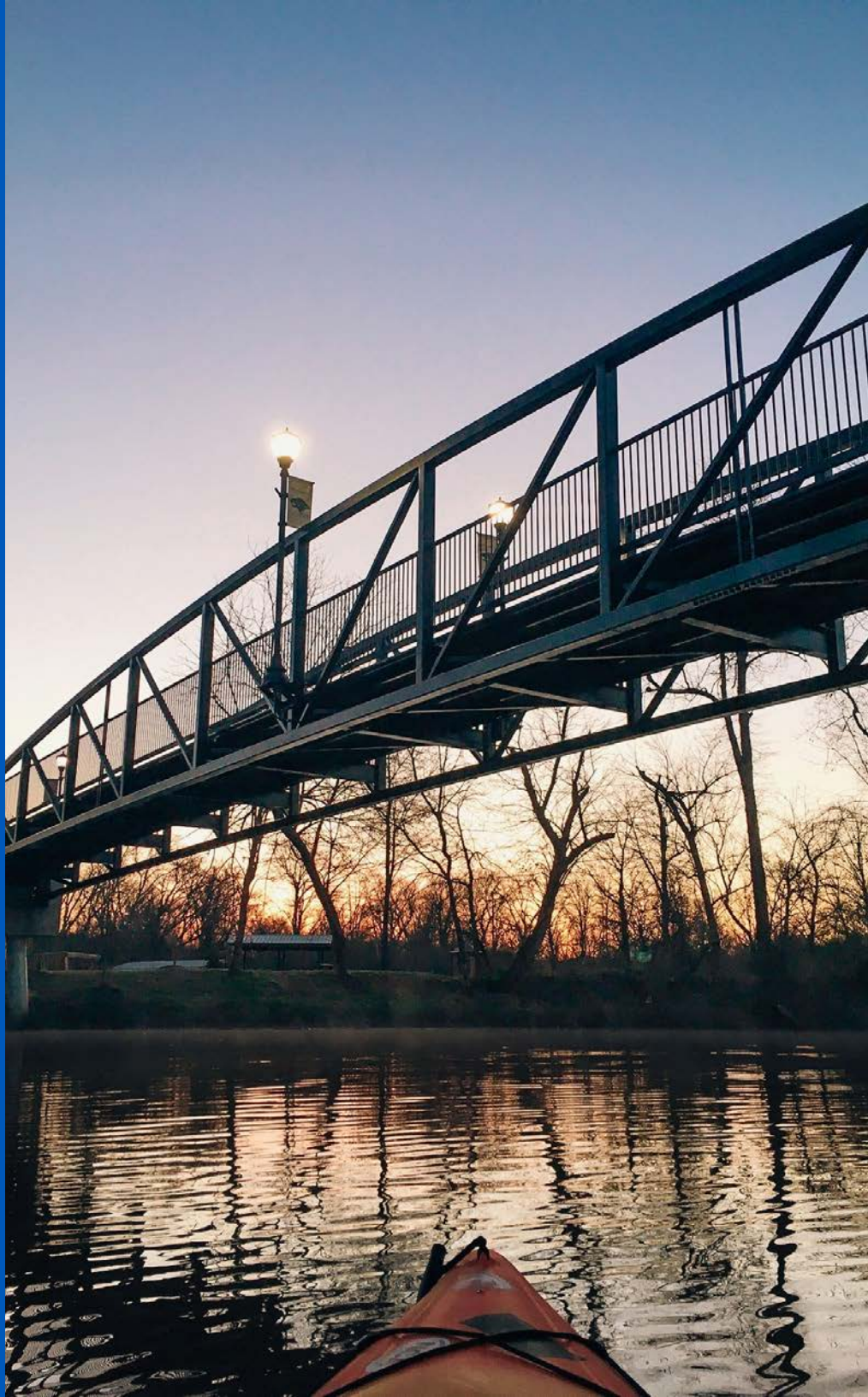
17,000 ADT

Lakefront Woods
18 SF Homes

SITE PLAN

REDHAWK RETAIL • MULTIPLE OUTPARCELS AVAILABLE FOR LEASE • RETAIL





NORTH CAROLINA

CRAMERTON

Cramerton, North Carolina, is a picturesque small town nestled along the South Fork of the Catawba River in Gaston County, just west of Charlotte. Known for its scenic charm and strong sense of community, Cramerton blends historic character with modern development. Its revitalized downtown features local shops, cafes, and the charming Goat Island Park, a popular destination for walking, kayaking, and family outings. The town's riverfront location and greenways make it ideal for outdoor enthusiasts who enjoy a quieter pace of life while remaining close to a major metro area.

In recent years, Cramerton has experienced steady residential growth, attracting newcomers seeking suburban comfort with easy access to Charlotte's job market and cultural amenities. Thoughtful planning and a focus on preserving natural beauty have helped the town maintain its small-town appeal. Cramerton is also part of the Gaston County Schools system and benefits from proximity to regional employers and the Charlotte Douglas International Airport. With its blend of walkability, natural beauty, and community events, Cramerton is an increasingly desirable place to live in the Charlotte region.



S NEW HOPE RD | CRAMERTON, NC

REDHAWK RETAIL

MULTIPLE OUTPARCELS AVAILABLE FOR LEASE

JOHN VAROL

980.498.3291
JVAROL@ATLANTICRETAIL.COM

WES THURMOND

980.498.3299
WTHURMOND@ATLANTICRETAIL.COM

ROBEY SPRATT

704.697.1901
RSPRATT@ATLANTICRETAIL.COM



WWW.ATLANTICRETAIL.COM

 [LINKEDIN.COM/COMPANY/ATLANTIC-RETAIL-PROPERTIES](https://www.linkedin.com/company/atlantic-retail-properties)
 [INSTAGRAM.COM/ATLANTIC_RETAIL/](https://www.instagram.com/atlantic_retail/)

 **CHAINLINKS**
RETAIL ADVISORS

ALBANY

ATLANTA

BOSTON

WEST PALM BEACH

LOS ANGELES

NEW YORK CRAMERTON

ORLANDO

PITTSBURGH

CHARLOTTE

THREE MORROCROFT CENTRE
CHARLOTTE, NC 28211
704.697.1900