

12220 E. THIRTEEN MILE ROAD  
WARREN, MICHIGAN

OFFICE FOR SALE  
69,625 Square Feet Available



**SIGNATURE  
ASSOCIATES**  
KNOW SIGNATURE | KNOW RESULTS



## PROPERTY FEATURES

- 69,625 square feet available
- Extraordinary opportunity to purchase a former school building which was later updated to office
- Heavy parking
- Warehouse area (26' x 31') with overhead door has 18' to deck
- Additional land for expansion or parking included
- Located on 7.76 acres
- Sale Price: \$3,375,000 (\$48.47/sq. ft.)



For more information, please contact:

**JEFFREY TREPECK**  
(248) 359 0626  
jtrepeck@signatureassociates.com

**DAVE MILLER**  
(248) 948 4183  
dmiller@signatureassociates.com

**SIGNATURE ASSOCIATES**  
One Towne Square, Suite 1200  
Southfield, MI 48076  
www.signatureassociates.com

Information is subject to verification and no liability for errors or omissions is assumed. Price is subject to change and listing withdrawal.

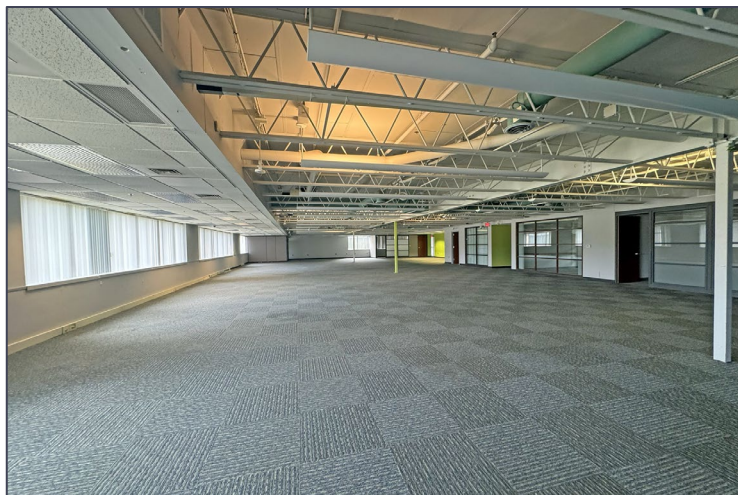


# 12220 E. Thirteen Mile Road – Warren, Michigan

## Office For Sale

69,625  
Square Feet  
AVAILABLE

### Interior Photos



For more information, please contact:

**JEFFREY TREPECK**

(248) 359 0626

[jtrepeck@signatureassociates.com](mailto:jtrepeck@signatureassociates.com)

**DAVE MILLER**

(248) 948 4183

[dmiller@signatureassociates.com](mailto:dmiller@signatureassociates.com)

**SIGNATURE ASSOCIATES**

One Towne Square, Suite 1200

Southfield, MI 48076

[www.signatureassociates.com](http://www.signatureassociates.com)

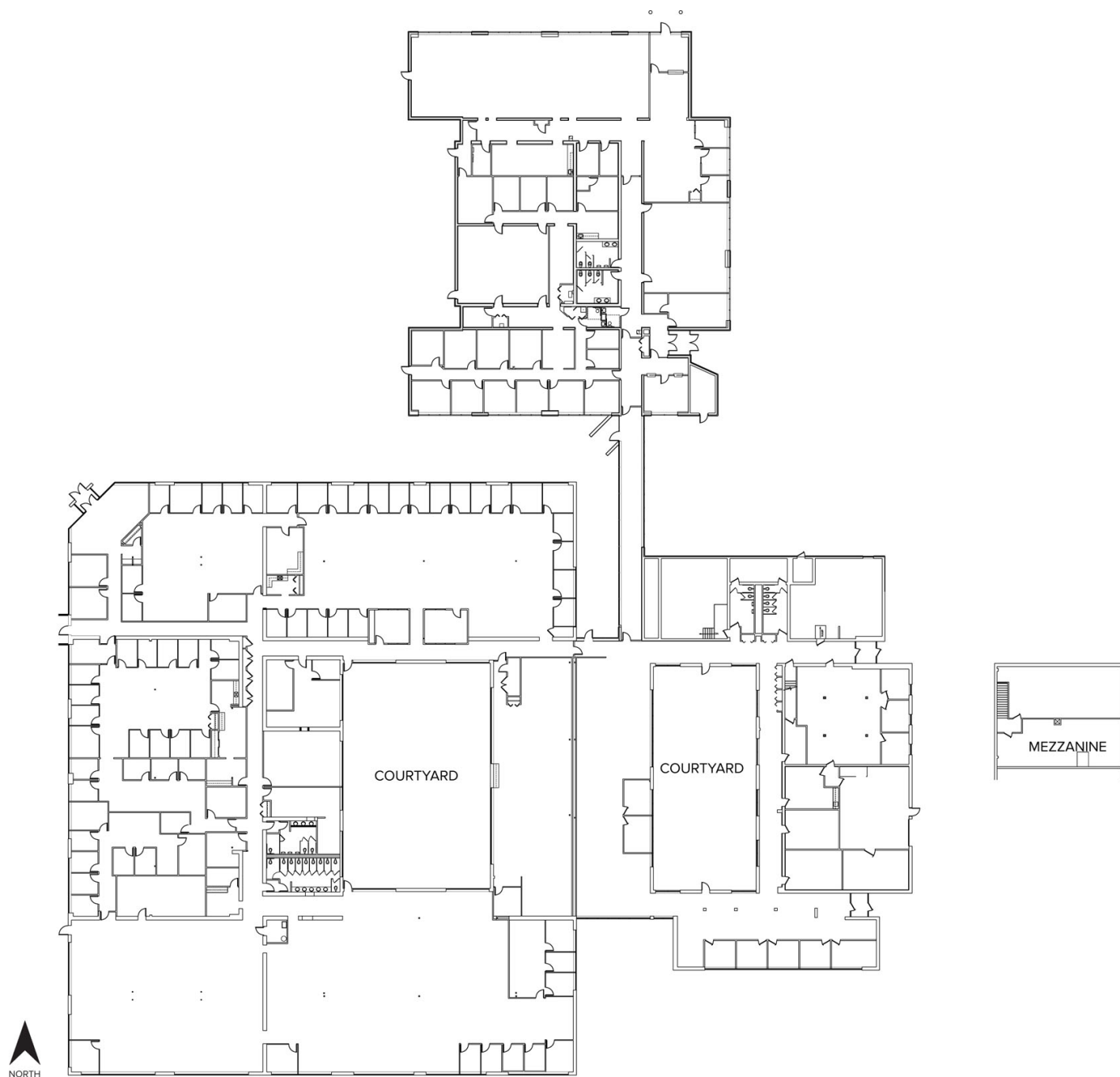
Information is subject to verification and no liability for errors or omissions is assumed. Price is subject to change and listing withdrawal.

# 12220 E. Thirteen Mile Road – Warren, Michigan

## Office For Sale

69,625  
Square Feet  
AVAILABLE

### Floor Plan



For more information, please contact:

**JEFFREY TREPECK**

(248) 359 0626

[jtrepeck@signatureassociates.com](mailto:jtrepeck@signatureassociates.com)

**DAVE MILLER**

(248) 948 4183

[dmiller@signatureassociates.com](mailto:dmiller@signatureassociates.com)

**SIGNATURE ASSOCIATES**

One Towne Square, Suite 1200

Southfield, MI 48076

[www.signatureassociates.com](http://www.signatureassociates.com)

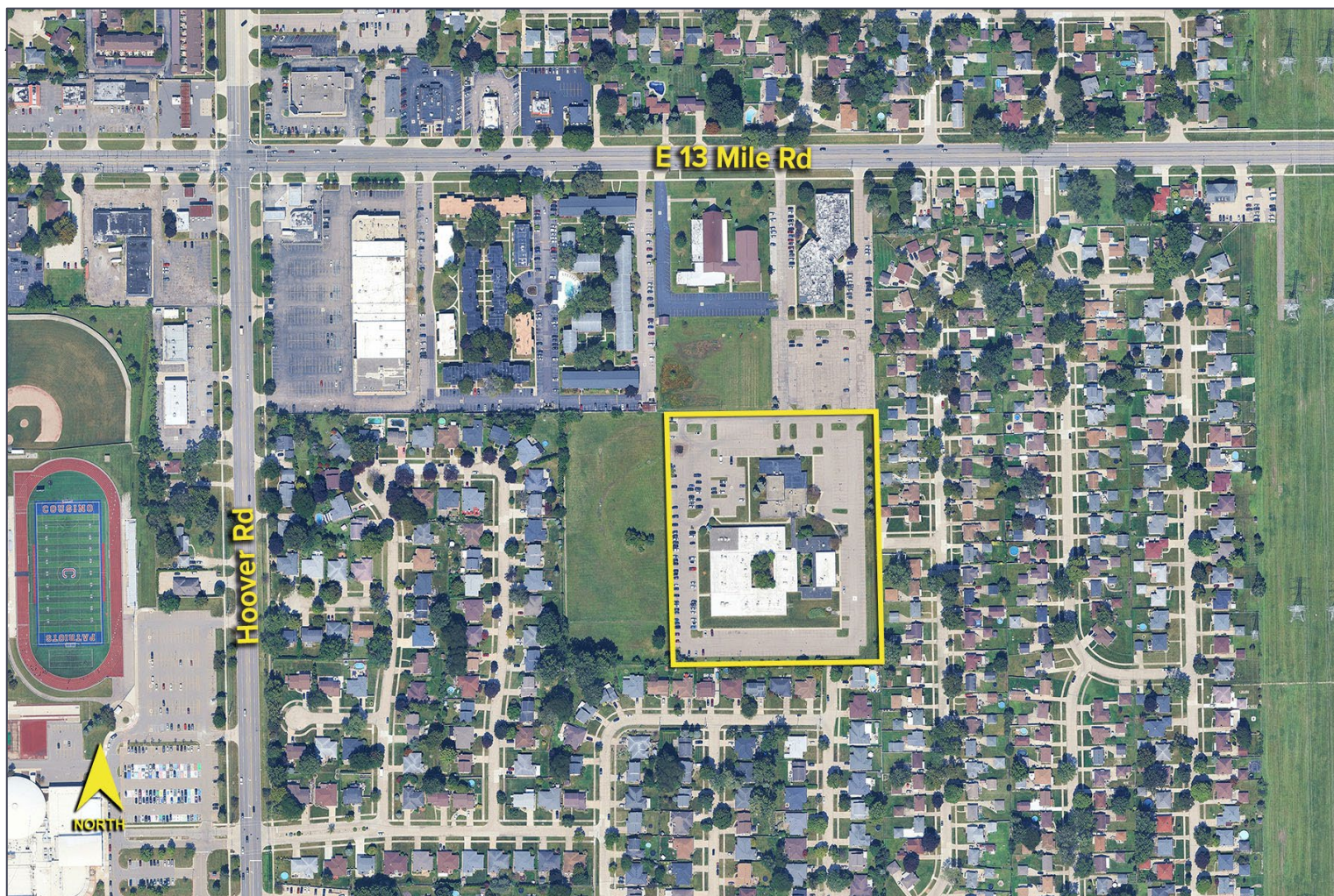
Information is subject to verification and no liability for errors or omissions is assumed. Price is subject to change and listing withdrawal.



# 12220 E. Thirteen Mile Road – Warren, Michigan

Office For Sale

69,625  
Square Feet  
AVAILABLE



For more information, please contact:

**JEFFREY TREPECK**

(248) 359 0626

[jtrepeck@signatureassociates.com](mailto:jtrepeck@signatureassociates.com)

**DAVE MILLER**

(248) 948 4183

[dmiller@signatureassociates.com](mailto:dmiller@signatureassociates.com)

**SIGNATURE ASSOCIATES**

One Towne Square, Suite 1200

Southfield, MI 48076

[www.signatureassociates.com](http://www.signatureassociates.com)