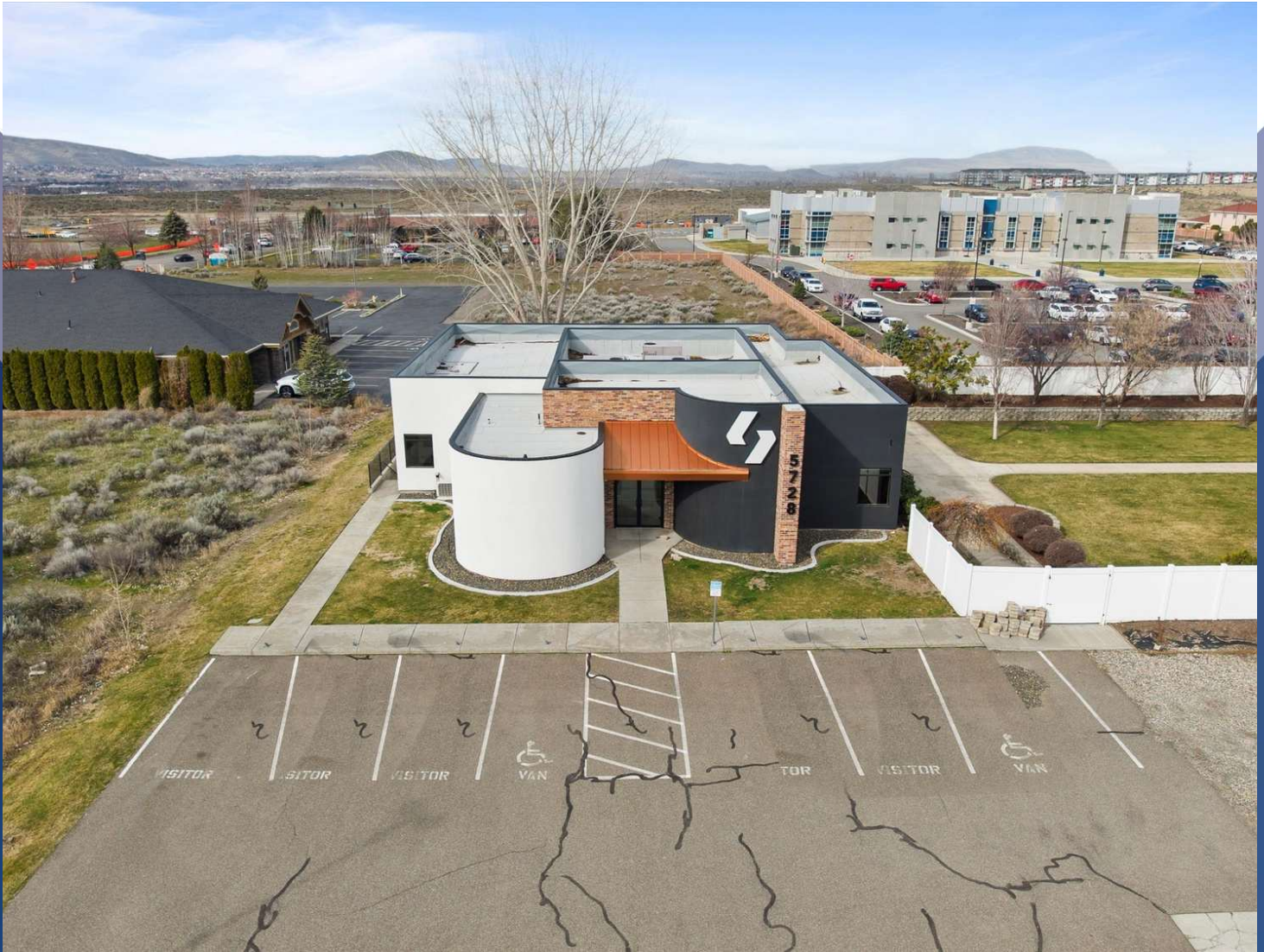


SALE

SOLGEN EXECUTIVE OFFICE

5808 Bedford St Pasco, WA 99301



SALE PRICE

\$1,995,000

Travis Davis
(509) 783-1394

©2023 Coldwell Banker. All Rights Reserved. Coldwell Banker Commercial® and the Coldwell Banker Commercial logos are trademarks of Coldwell Banker Real Estate LLC. The Coldwell Banker® System is comprised of company owned offices which are owned by a subsidiary of Anywhere Advisors LLC and franchised offices which are independently owned and operated. The Coldwell Banker System fully supports the principles of the Equal Opportunity Act.



**COLDWELL BANKER
COMMERCIAL
TOMLINSON**

SALE

SOLGEN EXECUTIVE OFFICE

5808 Bedford St Pasco, WA 99301



OFFERING SUMMARY

Sale Price:	\$1,995,000
Building Size:	6,286 SF
Available SF:	
Lot Size:	0.63 Acres
Price / SF:	\$317.37
Year Built:	2003
Renovated:	2020
Zoning:	Commercial

PROPERTY OVERVIEW

Discover a prime opportunity for office building investment in Pasco, WA. This meticulously maintained 6,286 SF property, renovated in 2020, offers a modern and functional space perfectly suited for a range of professional ventures. Zoned for commercial use, the building's versatile layout ensures adaptability to various business requirements. Situated on a generous lot, the property boasts 25 parking stalls, providing ample convenience for employees and visitors. Don't miss your chance to secure this exceptional office building in the thriving Pasco area, representing a promising venture for astute investors.

PROPERTY HIGHLIGHTS

- 6,286 SF modern office building
- Renovated in 2020 for contemporary appeal
- Commercial zoning for versatile usage
- Generous parking with 25 stalls
- Strategic location in Pasco, WA

OTHER RESOURCES

Travis Davis
(509) 783-1394



**COLDWELL BANKER
COMMERCIAL**
TOMLINSON

SALE

SOLGEN EXECUTIVE OFFICE

5808 Bedford St Pasco, WA 99301



PROPERTY DESCRIPTION

Discover a prime opportunity for office building investment in Pasco, WA. This meticulously maintained 6,286 SF property, renovated in 2020, offers a modern and functional space perfectly suited for a range of professional ventures. Zoned for commercial use, the building's versatile layout ensures adaptability to various business requirements. Situated on a generous lot, the property boasts 25 parking stalls, providing ample convenience for employees and visitors. Don't miss your chance to secure this exceptional office building in the thriving Pasco area, representing a promising venture for astute investors.

LOCATION DESCRIPTION

Discover the perfect setting for your next office investment in Pasco, WA. With its thriving commercial landscape and prime location, Solgen Executive Office presents an unmissable opportunity. Nestled in the heart of Pasco, the area boasts proximity to major transportation routes, including Interstates 82 and 182, offering seamless connectivity for businesses. Nearby, the stunning Columbia River provides a picturesque backdrop, while the bustling Franklin County offers diverse dining, retail, and entertainment options. The property's strategic position within this dynamic community ensures an exceptional investment for discerning office building investors.

Travis Davis
(509) 783-1394



**COLDWELL BANKER
COMMERCIAL**
TOMLINSON

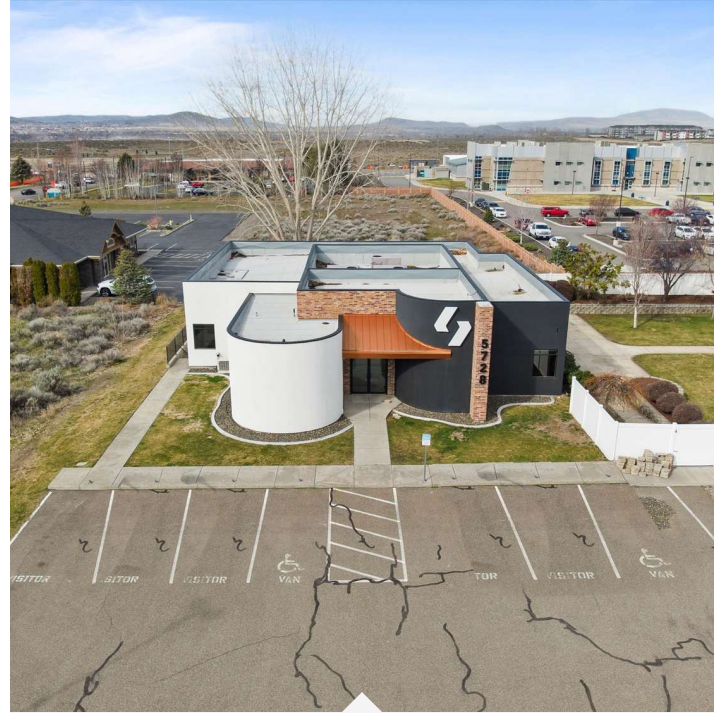
SALE

SOLGEN EXECUTIVE OFFICE

5808 Bedford St Pasco, WA 99301

Building Name	Solgen Executive Office
Property Type	Office
Property Subtype	Office Building
APN	115430105
Building Size	6,286 SF
Lot Size	0.63 Acres
Building Class	A
Year Built	2003
Year Last Renovated	2020
Number of Floors	2
Number of Buildings	1

Discover a prime opportunity for office building investment in Pasco, WA. This meticulously maintained 6,286 SF property, renovated in 2020, offers a modern and functional space perfectly suited for a range of professional ventures. Zoned for commercial use, the building's versatile layout ensures adaptability to various business requirements. Situated on a generous lot, the property boasts 25 parking stalls, providing ample convenience for employees and visitors. Don't miss your chance to secure this exceptional office building in the thriving Pasco area, representing a promising venture for astute investors.



- 6,286 SF modern office building
- Renovated in 2020 for contemporary appeal
- Commercial zoning for versatile usage
- Generous parking with 25 stalls
- Strategic location in Pasco, WA

Travis Davis
(509) 783-1394



**COLDWELL BANKER
COMMERCIAL**
TOMLINSON

SALE

SOLGEN EXECUTIVE OFFICE

5808 Bedford St Pasco, WA 99301

SALE PRICE

\$1,995,000

PROPERTY INFORMATION

Property Type	Office
Property Subtype	Office Building
Zoning	Commercial
Lot Size	0.63 Acres
APN #	115430105

LOCATION INFORMATION

Building Name	Solgen Executive Office
Street Address	5808 Bedford St
City, State, Zip	Pasco, WA 99301
County	Franklin
Cross-Streets	Sandifur Parkway

PARKING & TRANSPORTATION

UTILITIES & AMENITIES

BUILDING INFORMATION

Building Size	6,286 SF
Building Class	A
Tenancy	Single
Ceiling Height	10 ft
Number of Floors	2
Year Built	2003
Year Last Renovated	2020
Number of Buildings	1

Travis Davis
(509) 783-1394

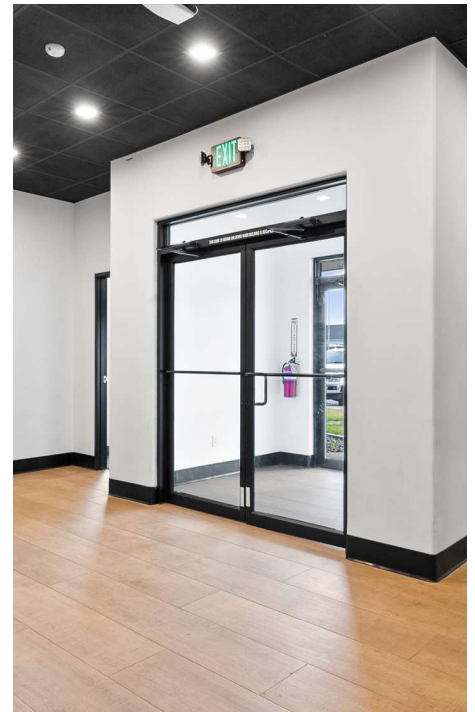
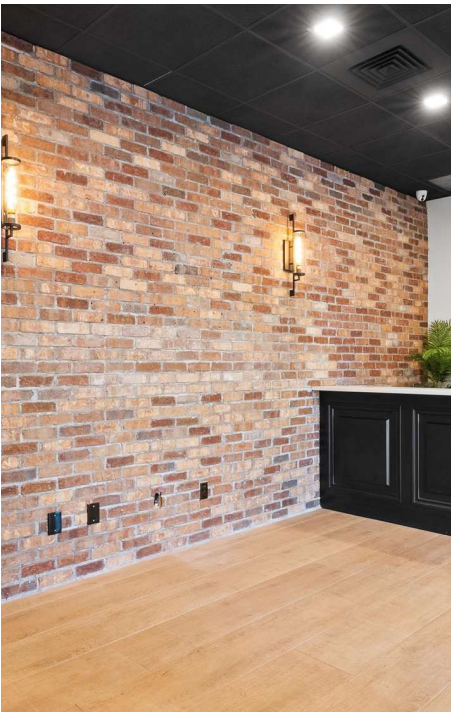


COLDWELL BANKER
COMMERCIAL
TOMLINSON

SALE

SOLGEN EXECUTIVE OFFICE

5808 Bedford St Pasco, WA 99301



Travis Davis
(509) 783-1394

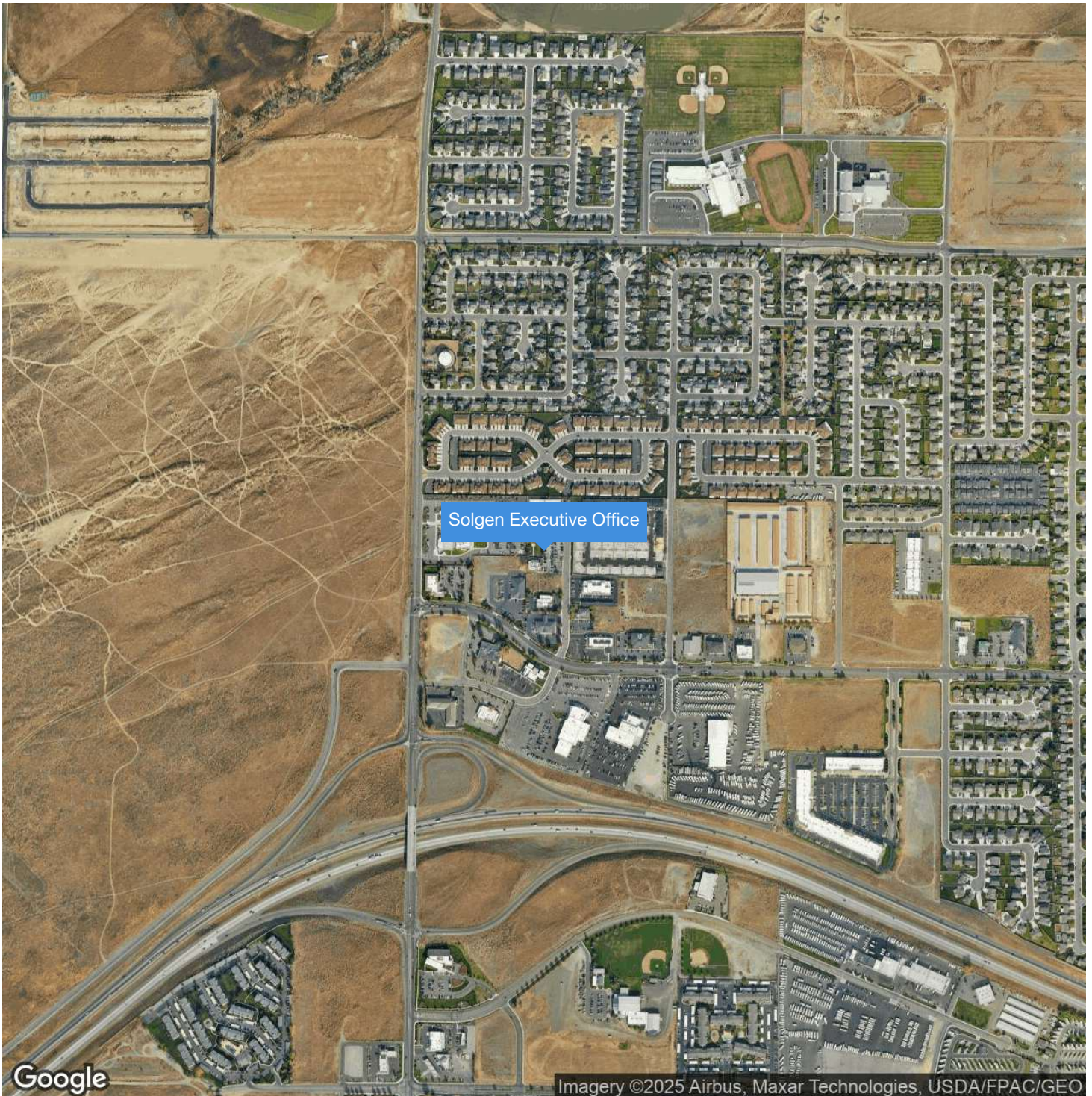


**COLDWELL BANKER
COMMERCIAL**
TOMLINSON

SALE

SOLGEN EXECUTIVE OFFICE

5808 Bedford St Pasco, WA 99301



Travis Davis
(509) 783-1394



**COLDWELL BANKER
COMMERCIAL**
TOMLINSON