



For lease

Retail Space

4830 Lincoln Blvd @ Fiji Way
Marina del Rey, CA 90292

OWNER/DEVELOPER

KENNEDY WILSON



Marina View Retail Center

A 14,700 sf retail center (with adjacent 61,000 sf office tower) at major intersection of Fiji Way and Lincoln Blvd. Located across the street from the Waterside Marina Del Rey, a neighborhood lifestyle shopping center developed by Caruso Affiliated, with such tenants as Mendocino Farms, Starbucks, Shake Shack, Sugarfish, Sweetgreen, Pinkberry, Fresh Brothers, CPK and Ralphs.

The space features street level eyebrow signage facing Lincoln Boulevard, offering tremendous visibility for retail tenants.

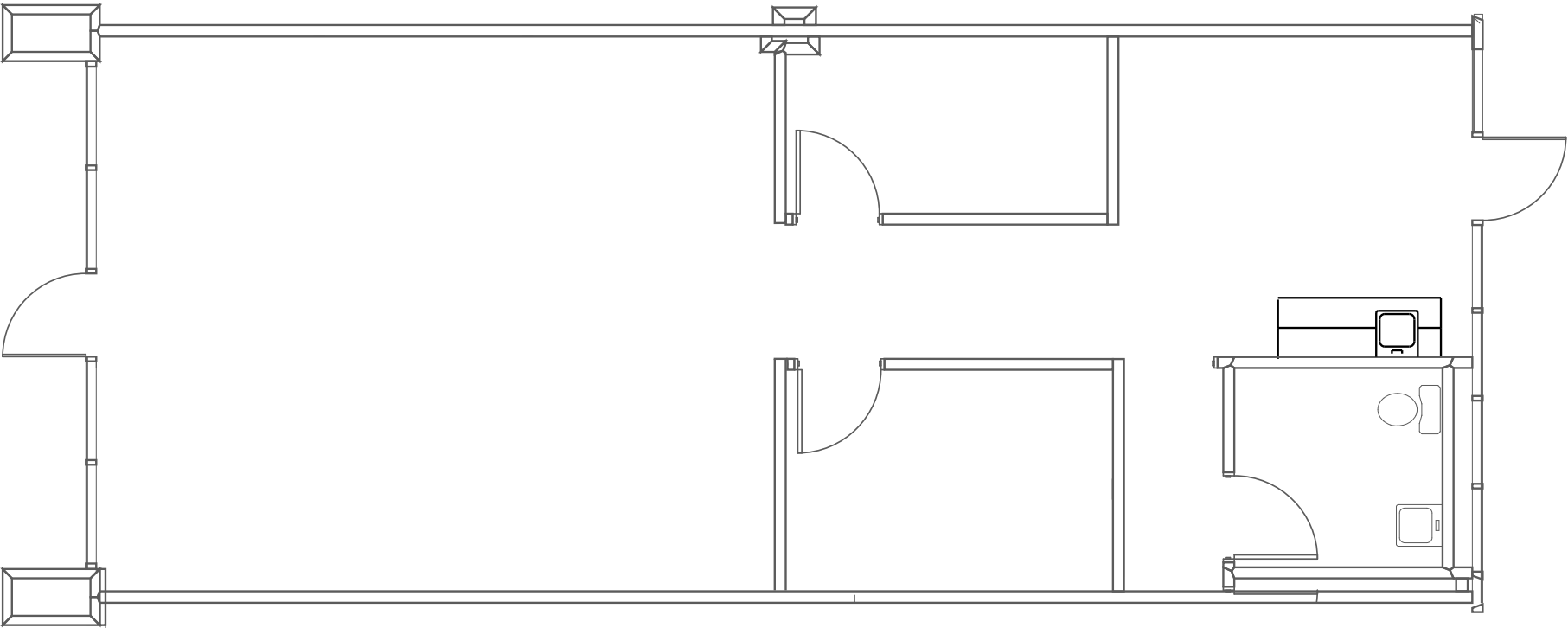
Now	1,145	\$5.30
Available Date	RSF	NNN*

*NNN charges are currently estimated at \$2.10 SF (excluding tenant utilities and janitorial costs).



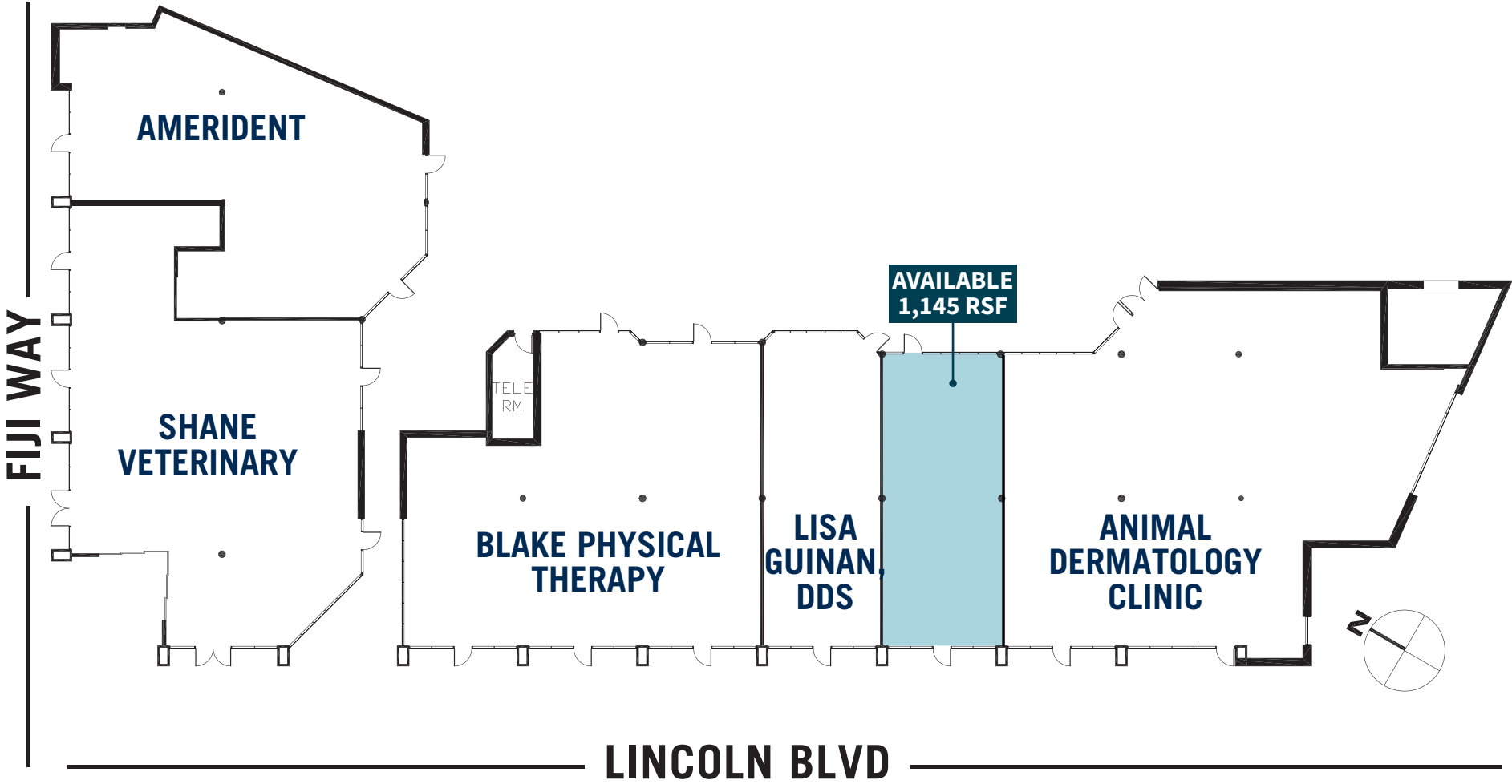
Floor Plan

LINCOLN BLVD



**AVAILABLE
1,145 RSF**

Site Plan



Location



	1 mile	3 miles	5 miles
2023 Population	24,040	198,075	490,354
2023 Households	12,450	89,946	221,850
Avg Household Income	\$152,987	\$142,607	\$129,189
Median Home Value	\$1,028,856	\$1,068,414	\$1,040,879
Total Businesses	1,855	12,784	40,726
Traffic count	56,947 trips/day		
*Source - CoStar Realty Information, Inc.			





MARINA VIEW

FOR LEASING INFORMATION CONTACT:

GABRIEL BROWN
gabe.brown@jll.com
+1 310 435 4344
License #01441920



Although information has been obtained from sources deemed reliable, neither Owner nor JLL makes any guarantees, warranties or representations, express or implied, as to the completeness or accuracy as to the information contained herein. Any projections, opinions, assumptions or estimates used are for example only. There may be differences between projected and actual results, and those differences may be material. The Property may be withdrawn without notice. Neither Owner nor JLL accepts any liability for any loss or damage suffered by any party resulting from reliance on this information. If the recipient of this information has signed a confidentiality agreement regarding this matter, this information is subject to the terms of that agreement. © 2025 Jones Lang LaSalle IP, Inc. All rights reserved.