

# PEERY HOTEL

FOR LEASE



## PROPERTY DETAILS

110 West 300 South, Salt Lake City, UT 84101

- Ideal location for a speak easy/bar or barbershop
- One Block from Gallivan Plaza's Trax station
- Walkable proximity to multiple amenities within minutes
- Space Available: Located in basement
  - » Approximately 1,410 SF
  - » Asking rent \$21.50 PSF Full Service

## SURROUNDING TENANTS



## 2025 DEMOS



### EST. POPULATION

1 MILE » **44,497**  
3 MILE » **174,746**  
5 MILE » **270,188**



### EST. HOUSEHOLDS

1 MILE » **25,171**  
3 MILE » **81,015**  
5 MILE » **118,815**



### EST. AVERAGE HH INCOME

1 MILE » **\$105,054**  
3 MILE » **\$107,432**  
5 MILE » **\$117,986**

# NEWMARK

Mountain West

**JOSH VANCE, CCIM**  
jvance@newmarkmw.com  
direct 801.456.8857  
[View Profile](#)

**J.R. HOWA**  
jhowa@newmarkmw.com  
direct 801.578.5545  
[View Profile](#)

**FULL SERVICE  
COMMERCIAL REAL ESTATE**  
312 East South Temple  
Salt Lake City, Utah 84111  
Office 801.456.8800  
[www.newmarkmw.com](http://www.newmarkmw.com)

# SITE PLAN

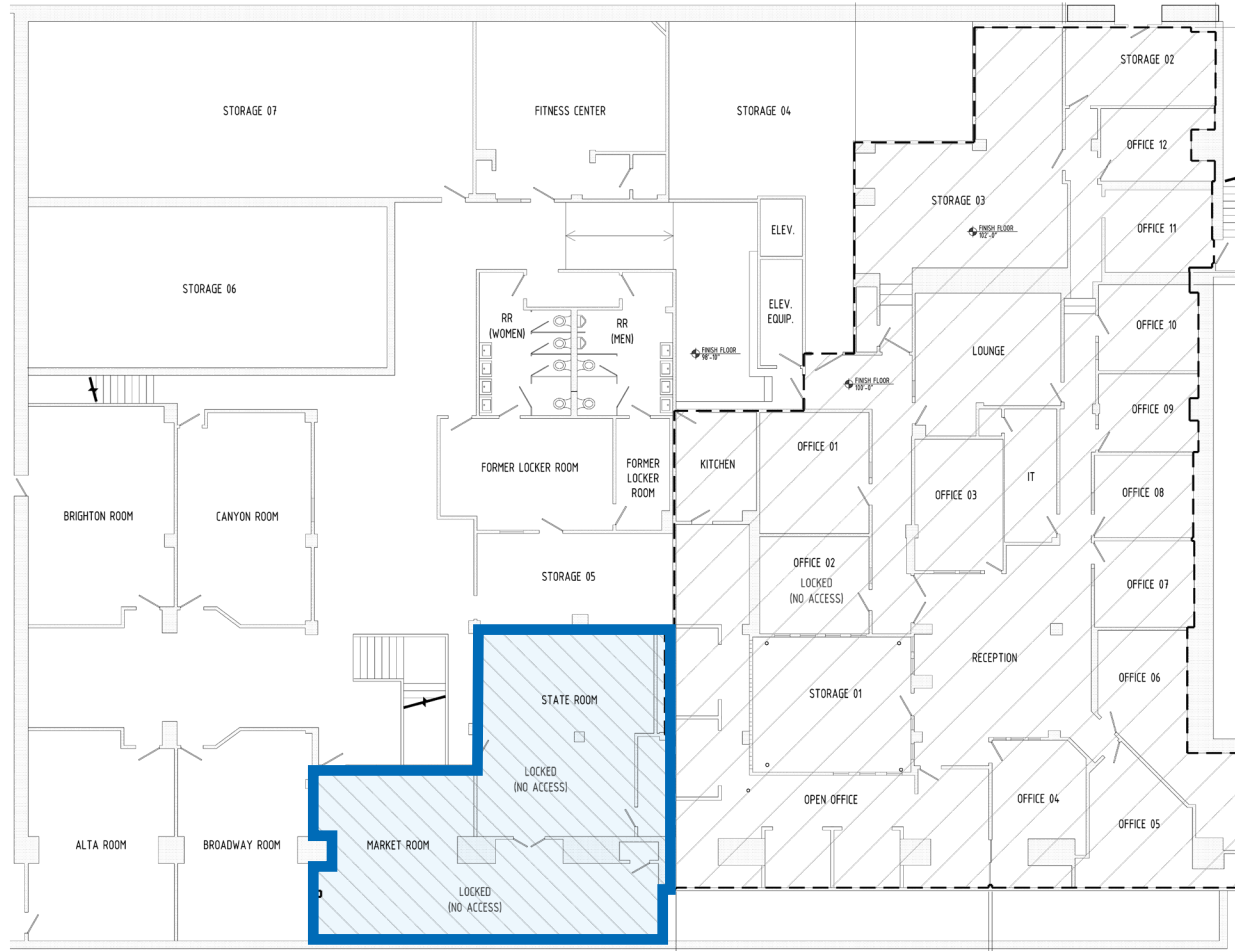
# PEERY HOTEL

# NEWMARK

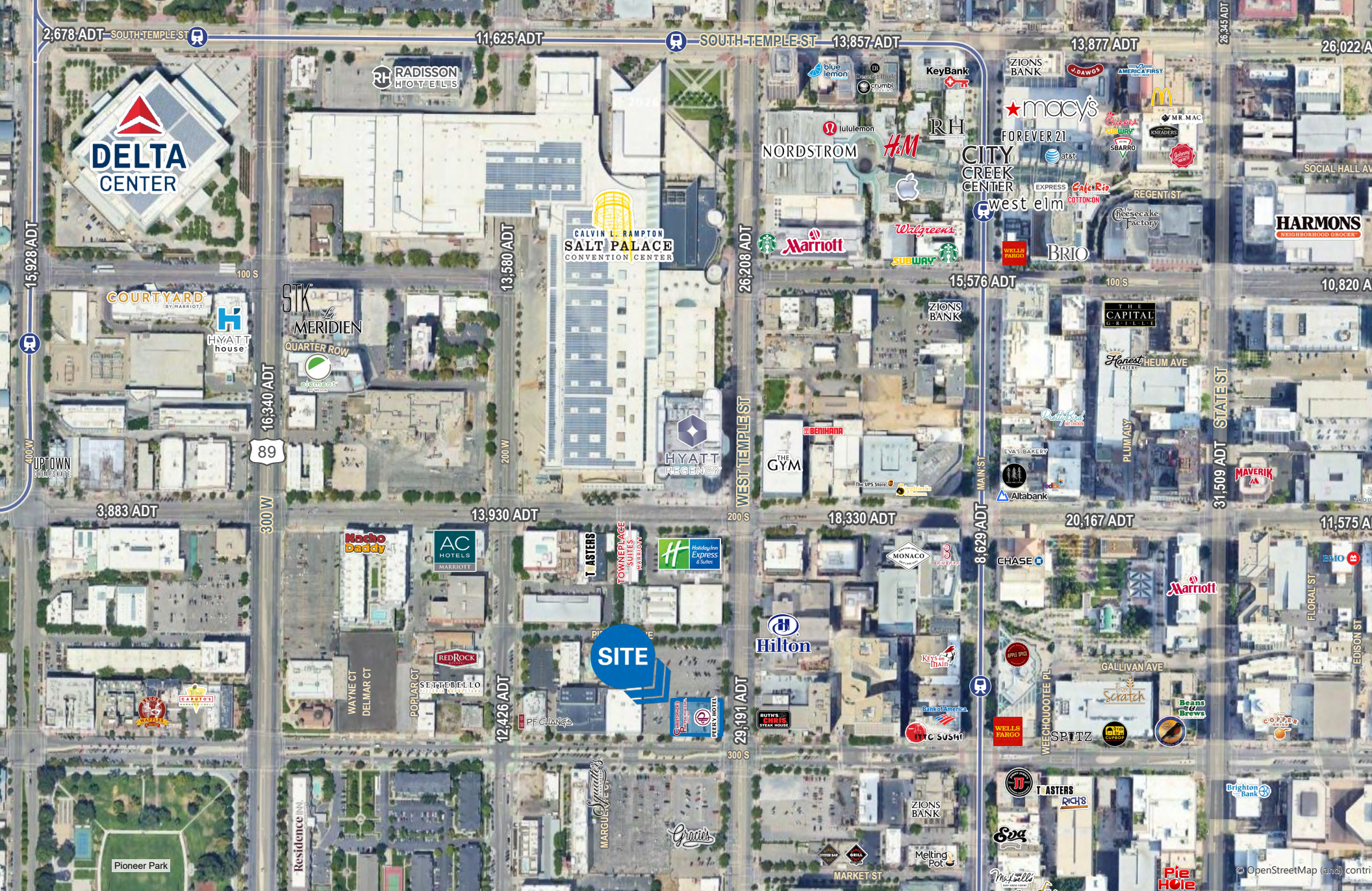
**MOUNTAIN WEST**

**JOSH VANCE, CCIM**  
jvance@newmarkmw.com  
direct 801.456.8857  
[View Profile](#)

**J.R. HOWA**  
jhowa@newmarkmw.com  
direct 801.578.5545  
[View Profile](#)



**FULL SERVICE  
COMMERCIAL REAL ESTATE**  
312 East South Temple  
Salt Lake City, Utah 84111  
Office 801.456.8800  
[www.newmarkmw.com](http://www.newmarkmw.com)



**JOSH VANCE, ccim**  
 jvance@newmarkmw.com  
 direct 801.456.8857  
[View Profile](#)

**J.R. HOWA**  
 jhowa@newmarkmw.com  
 direct 801.578.5545  
[View Profile](#)

**FULL SERVICE  
 COMMERCIAL REAL ESTATE**  
 312 East South Temple  
 Salt Lake City, Utah 84111  
 Office 801.456.8800  
[www.newmarkmw.com](http://www.newmarkmw.com)