

3525 Green Court

ANN ARBOR, MICHIGAN 48105

\$7,200,000 Asking Price



Property Highlights

- First Time on the Market
- Adjacent to University of Michigan's North Campus
- 4 Miles to Downtown Ann Arbor
- PUD Zoning Allows Residential, Hospitality, Office, and R&D Uses
- Proximity to US-23, Bus Line, Local Retail
- Opportunity for Additional Density

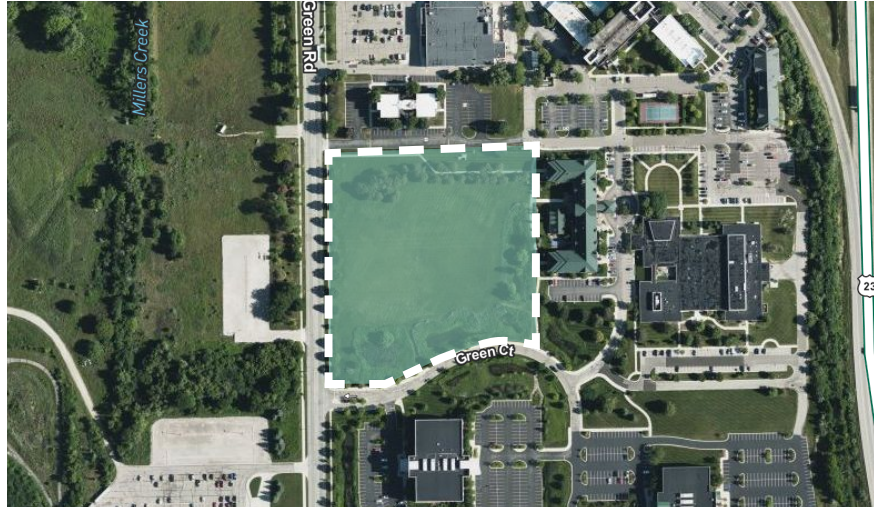
Property Features

7.16

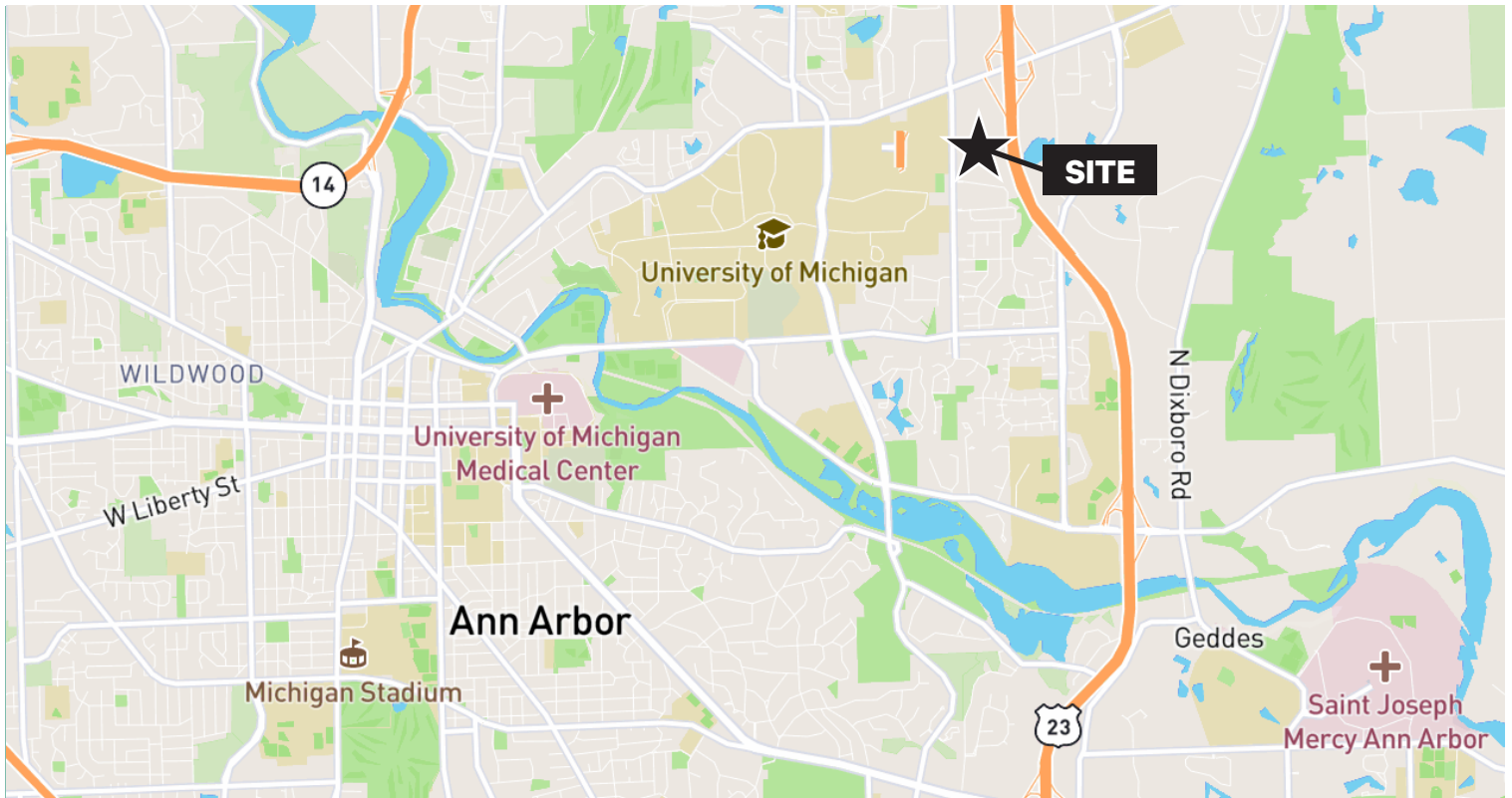
Available Acreage

PUD

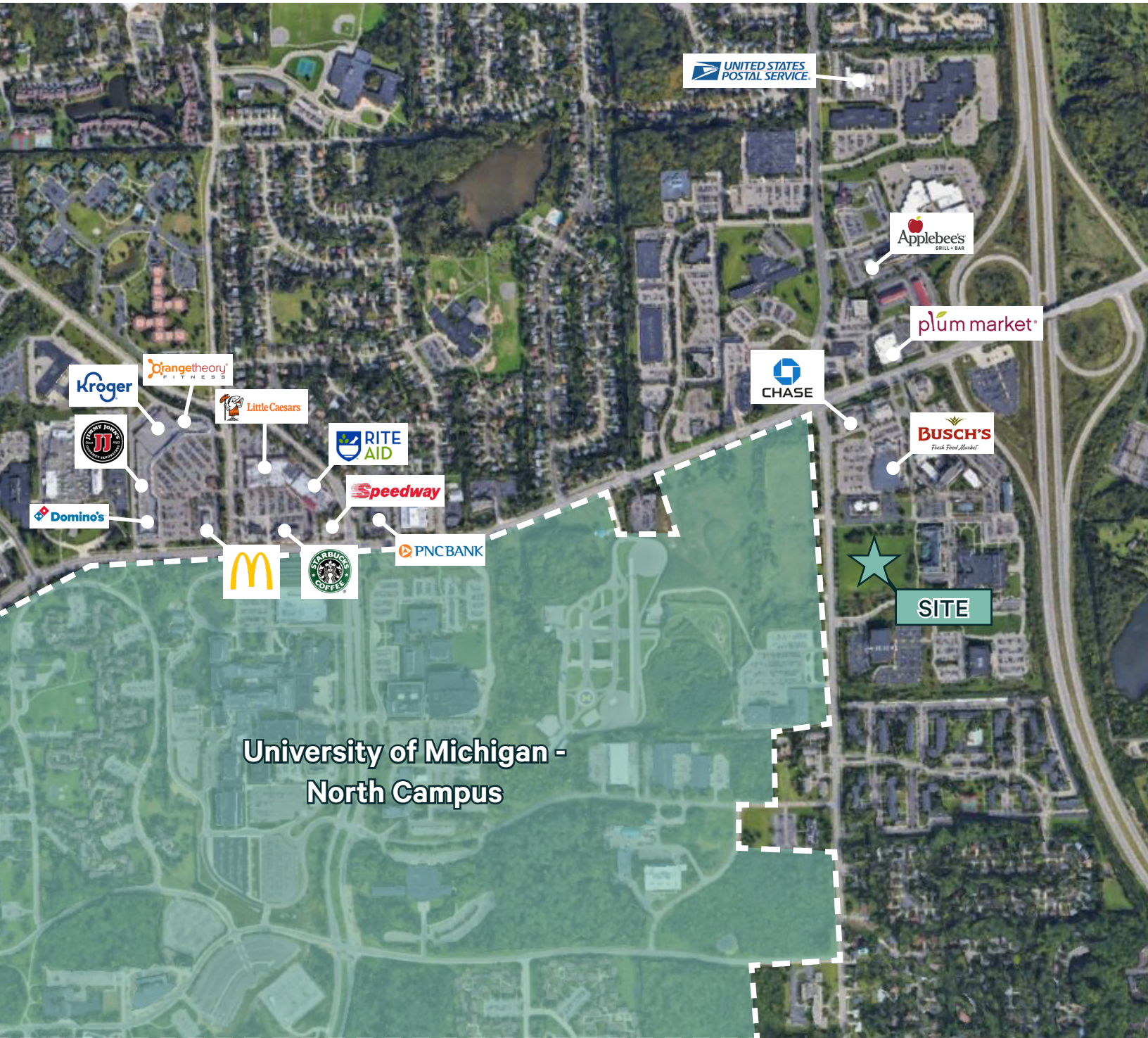
Zoned



Proximity Map



Surrounding Retail



MULTI-USE LAND FOR SALE

3525 Green Court, Ann Arbor, Michigan

For Sale

Property Photos



Contact Us

Tim Guest

Vice President

+1 248 936 6836

tim.guest@cbre.com

© 2022 CBRE, Inc. All rights reserved. This information has been obtained from sources believed reliable, but has not been verified for accuracy or completeness. You should conduct a careful, independent investigation of the property and verify all information. Any reliance on this information is solely at your own risk. CBRE and the CBRE logo are service marks of CBRE, Inc. All other marks displayed on this document are the property of their respective owners, and the use of such logos does not imply any affiliation with or endorsement of CBRE. Photos herein are the property of their respective owners. Use of these images without the express written consent of the owner is prohibited.

www.cbre.com/detroit

CBRE