

ACREAGE FOR SALE

4258 Cagle Road, Lula, GA 30554

Industrial Assemblage/Opportunity along SR 365 and Rail



Highlights are Approximate

INDUSTRIAL SITES (S) – SR 365



Norton Commercial & Acreage Group, LLC

434 Green Street

Gainesville, GA 30501

770.297.4800 (Main)

470.691.0105 (Fax)

www.NortonCommercial.com

INDUSTRIAL SITE(S)

4258 Cagle Road, Lula, GA 30554

Along SR-365 and Norfolk Southern Rail



Highlights are Approximate

Property Summary

4258 Cagle Rd: 28.5863 +/- Acres

- Asking: \$50,000/Acre
- Over 3,100' +/- of Norfolk Frontage
- Currently Zoned AR III

3875 Cornelia Hwy: 52.74 +/- Acres:

- Zoned Light Industrial
- Asking: \$45,000/Acre

3835 Cornelia Hwy: 28.44 +/- Acres:

- Zoned AR III
- Listed by The Simpson Company

Property Overview

4258 Cagle Rd is located along SR 365, just North of Gainesville, GA which was recently named [Georgia's fastest growing city](#). **Norfolk Southern Rail Line** separates this tract from (2) other properties (**81+ combined acres**) fronting SR 365. Over 110 +/- Acres: along SR 365 and Cagle Rd frontage, Norfolk Southern Rail Line with possible spur, all of which neighboring the Inland Port and the Gateway Centre Industrial Park. To learn more about Hall County, GA [Click Here](#). To connect with Hall County Chamber of Commerce, [Click Here](#).



Charlie Hawkins

770.718.5206 (Office)

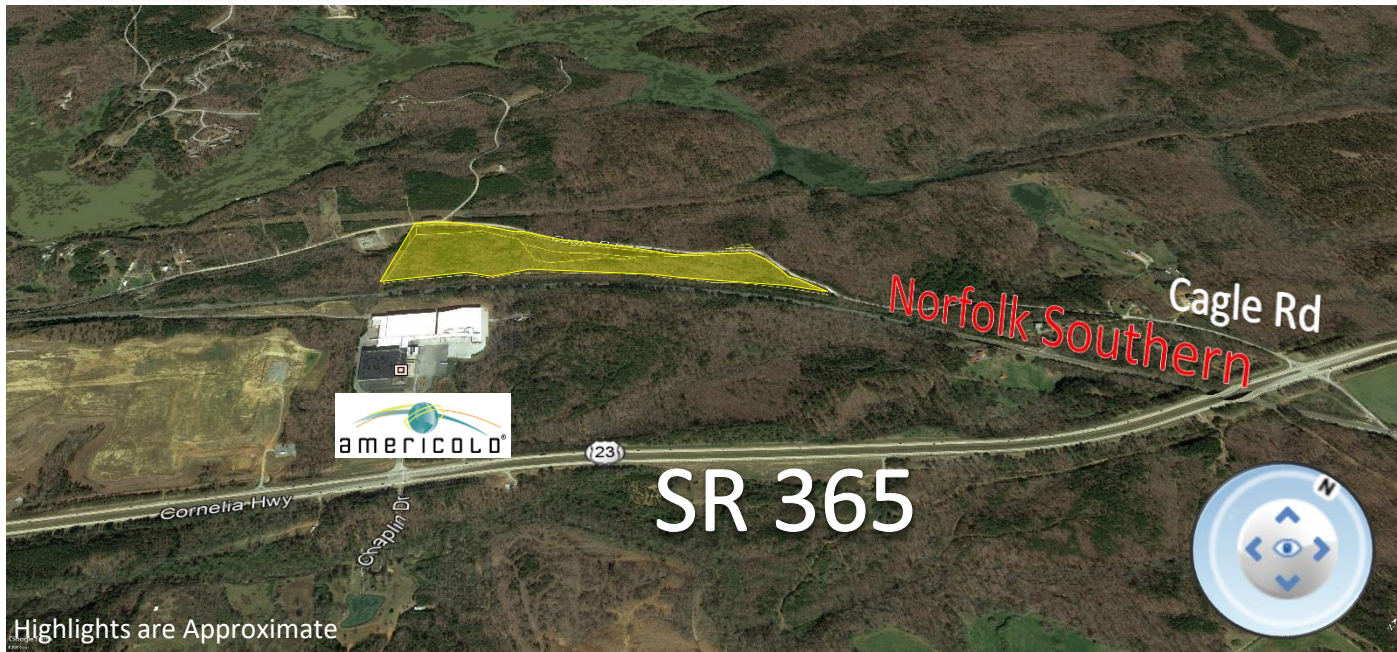
678.614.0837 (Cell)

CHawkins@GoNorton.com

INDUSTRIAL SITE(S)

4258 Cagle Road, Lula, GA 30554

Along SR-365 and Norfolk Southern Rail



Charlie Hawkins

770.718.5206 (Office)

678.614.0837 (Cell)

CHawkins@GoNorton.com

INDUSTRIAL SITE(S)

4258 Cagle Road, Lula, GA 30554

Along SR-365 and Norfolk Southern Rail



Charlie Hawkins

770.718.5206 (Office)

678.614.0837 (Cell)

CHawkins@GoNorton.com