



KNAPP
PROPERTIES

500°00'00"E 550.77'

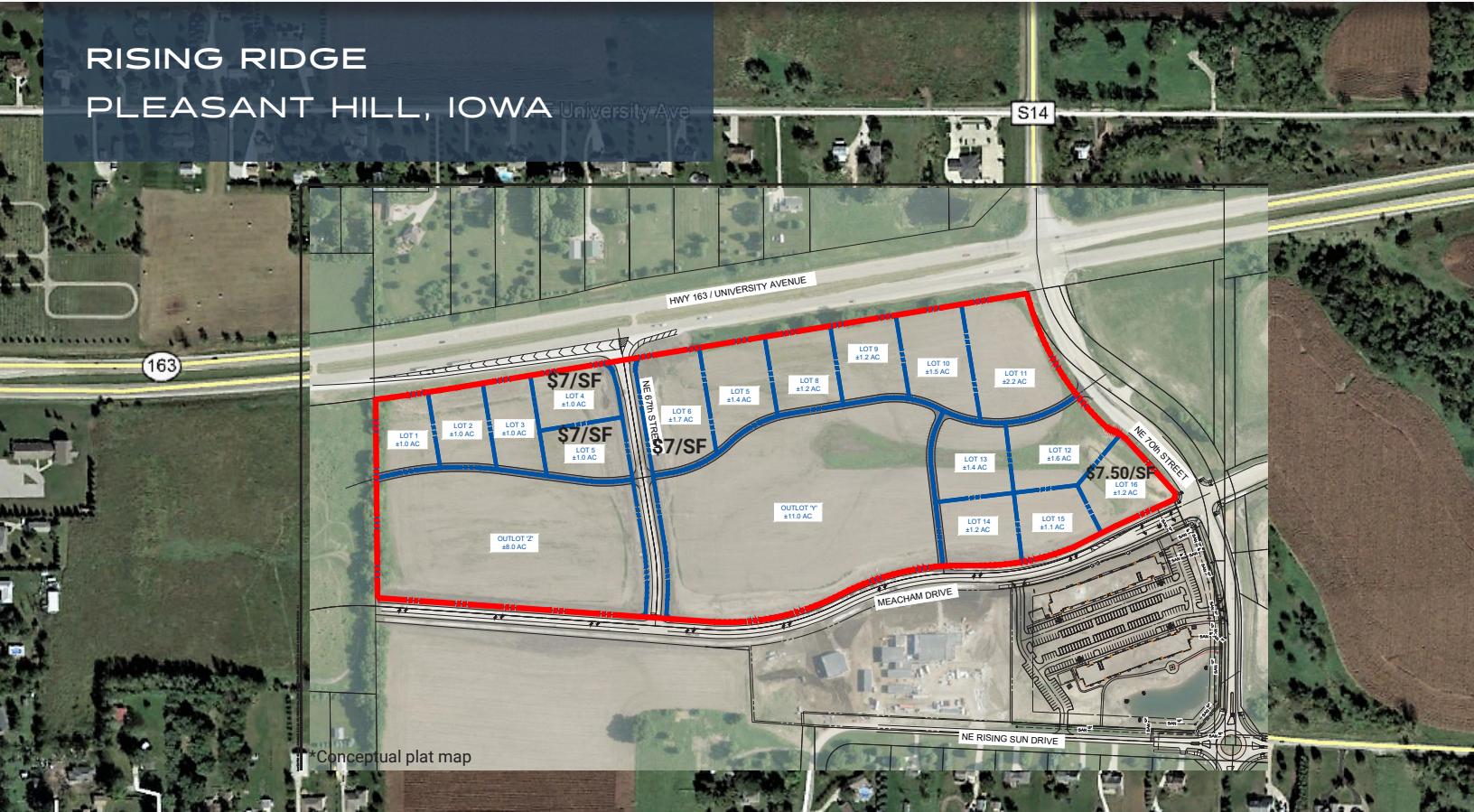
KOREY BIRKENHOLTZ

515.480.6596
korey@knapplc.com
Licensed in IA

ANGIE TESSAU, CCIM, SIOR

515.707.6889
angiet@knapplc.com
Licensed in IA

RISEING RIDGE PLEASANT HILL, IOWA



LAND AVAILABLE

- 46.09 +/- Acres available (Commercial, Medium Density or Senior Living)
- South of NE University
- 1.5 miles east of the Highway 65
- Minutes from I-235 / I-35 / I-80

PRICING

Call for pricing.

PROPERTY FEATURES

Located east of Highway 65, south of NE University, and with easy access to I-235 / I-35 / I-80, Rising Ridge is set up for an easy commute to anywhere you need to be. Reconstruction of NE 70th Street with the additions of Meacham Street to the east and west currently underway.

| Market Information* | 2 Miles | 5 Miles | 10 Miles |
|---------------------|----------|----------|----------|
| Population | 6,084 | 57,250 | 235,279 |
| Households | 2,299 | 21,782 | 90,377 |
| Median Income | \$92,699 | \$70,501 | \$56,372 |

5000 WESTOWN PARKWAY SUITE 400 | WEST DES MOINES, IA 50266-5921
P 515.223.4000 | F 515.222.5220 | KNAPPPROPERTIES.COM

Knapp Properties, and all agents whose licenses are held by Knapp Properties, are licensed in the State of Iowa. Information contained here deemed reliable but not guaranteed by Knapp Properties.



KNAPP
PROPERTIES

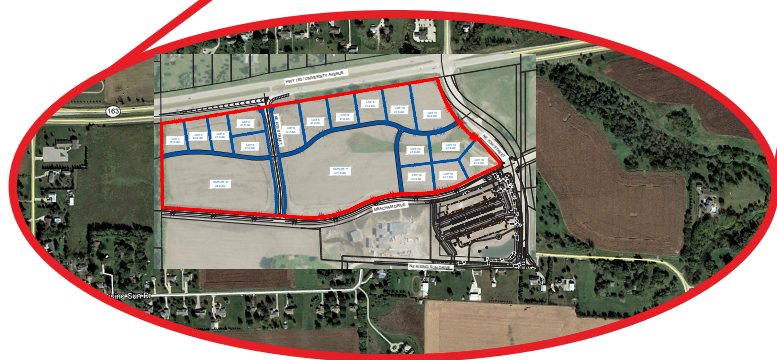
KOREY BIRKENHOLTZ

515.480.6596
korey@knapplc.com
Licensed in IA

ANGIE TESSAU, CCIM, SIOR

515.707.6889
angiet@knapplc.com
Licensed in IA

**RISING RIDGE
PLEASANT HILL, IOWA**



5000 WESTOWN PARKWAY SUITE 400 | WEST DES MOINES, IA 50266-5921
P 515.223.4000 | F 515.222.5220 | KNAPPPROPERTIES.COM

Knapp Properties, and all agents whose licenses are held by Knapp Properties, are licensed in the State of Iowa.
Information contained here deemed reliable but not guaranteed by Knapp Properties.