

FOR LEASE



Medical Office/Clinic Opportunity!

109 EUREKA STREET, SUITE B • BATESVILLE, MS 38606

SUMMARY

Lease Rate: \$5,000.00 Per Month

Lease Type: Modified Gross

Lot Size: 0.30 Acres

Building SF: 8,800 +/- SF

Parking: Shared Off Street Parking

Zoning: Office



RHODES THOMPSON
Commercial Agent
(662) 892-4000
rhodesthompson@outlook.com
Mississippi

(901) 286-6200 - Main Office
(901) 833-8000 - Cell

AVAILABLE FOR LEASE

Suite	Rate	Size	Type
B	\$5,000 /mo	4,678 +/- SF	Modified Gross

PROPERTY DESCRIPTION

Are you looking for a clinical space in a great location in Batesville, MS?! Check out this leasing opportunity that just became available at 109 Eureka Street in downtown Batesville just 2 miles from the I-55 exit. This space is currently operating as a medical clinic that features a reception and checkout area, a large waiting area for patients, multiple offices and exam rooms, a large exam/procedure room, lab, medicine room, x-ray room and a break area for employees. Call to schedule an appointment to discuss this leasing opportunity or schedule a tour!

LOCATION DESCRIPTION

Located just off the Batesville square and less than a mile from Highway 51 and just two miles for I-55!



PROPERTY PHOTOS

109 Eureka Street, Suite B, Batesville, MS 38606



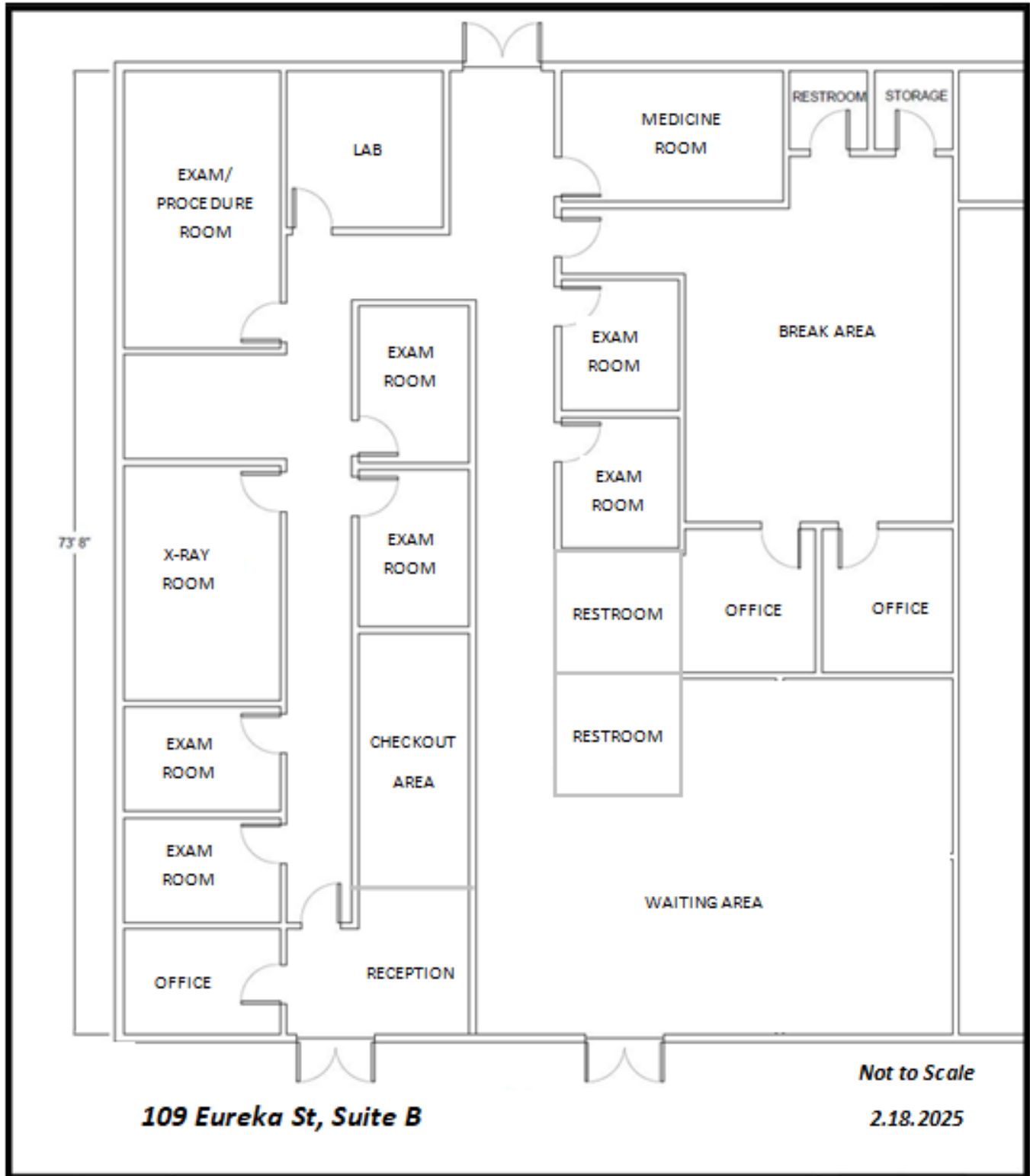
PROPERTY PHOTOS

109 Eureka Street, Suite B, Batesville, MS 38606



FLOOR PLAN

109 Eureka Street, Suite B, Batesville, MS 38606



FLOOR PLAN OF CURRENT MEDICAL CLINIC (approximate - not to scale)

BUSINESS MAP

109 Eureka Street, Batesville, MS 38606

