

6965 Luther Drive

SACRAMENTO, CA 95823

Unit 10/11: ±9,648 SF with ±1,479 SF of Office & ±8,600 SF of Yard
Unit 5: ±4,092 SF with ±1,100 SF Office



Contact Us

Zac Sweet SIOR
Senior Vice President
+1 916 717 4768
zac.sweet@cbre.com
Lic. 01352800

Jeff Kvarme
First Vice President
+1 916 203 5257
jeff.kvarme@cbre.com
Lic. 01924968

Tyler Howell
Senior Associate
+1 916 781 4835
tyler.howell1@cbre.com
Lic. 02100245

Courtney Lee
Associate
+1 916 906 5544
courtney.lee@cbre.com
Lic. 02031694



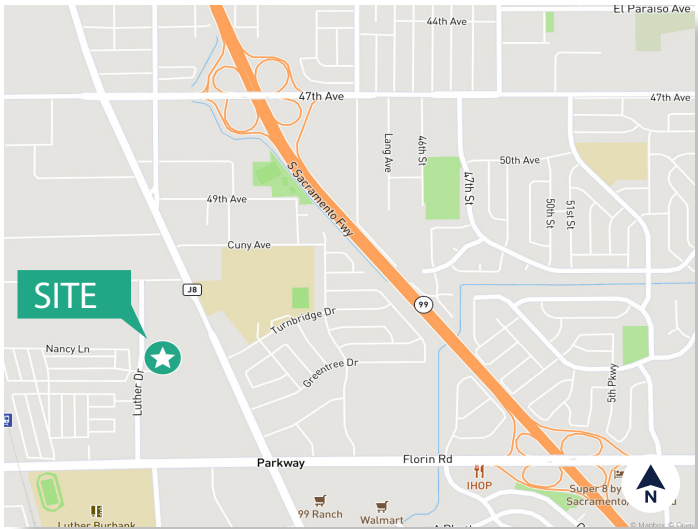
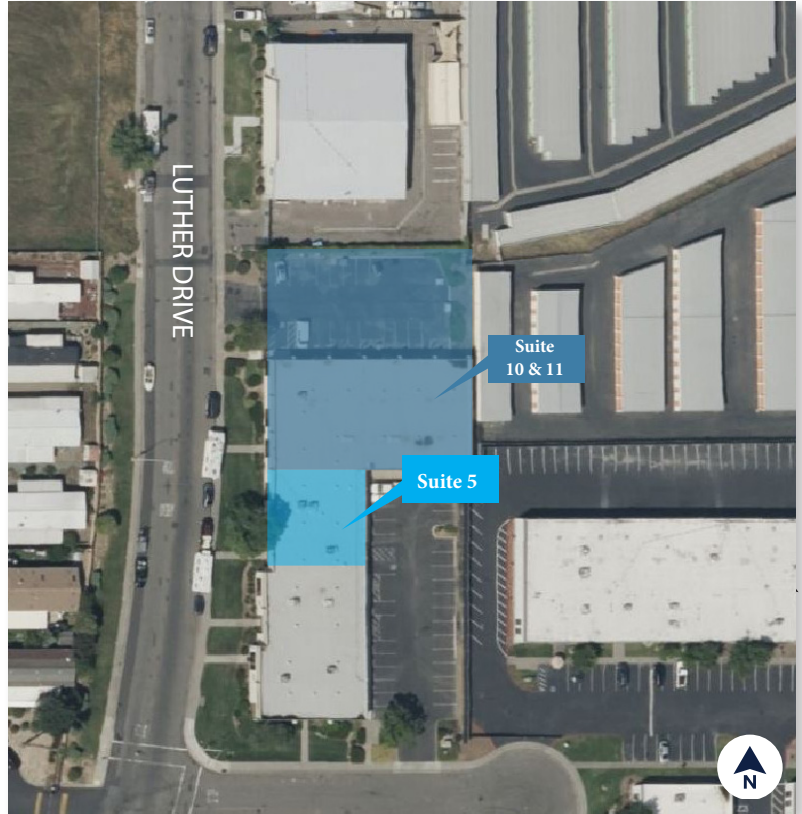
PROPERTY INFORMATION

6965 LUTHER DRIVE
SACRAMENTO, CA 95823

- BUILDING SIZE: ±20,412 SF***
UNIT 10 & 11: ±9,648 SF
- OFFICE: ±1,479 SF
 - SECURED YARD: ±8,600 SF
 - GRADE LEVEL DOORS: 4 - 12' X 10'
 - CLEAR HEIGHT: 16' - 18'
 - POWER: 200 Amps, 120/208V 3-Phase

- UNIT 5: ±4,092***
- OFFICE: ±1,100 SF*
 - GRADE LEVEL DOOR: 1 - 12' x 10'
 - CLEAR HEIGHT: 16' - 18'
 - POWER: 100 AMPS, 120/208V 3-PHASE*
 - FULLY CONDITIONED WAREHOUSE

*TENANT TO INDEPENDENTLY VERIFY PRIOR TO ENTERING BINDING AGREEMENT



Contact Us

Zac Sweet SIOR
 Senior Vice President
 +1 916 717 4768
 zac.sweet@cbre.com
 Lic. 01352800

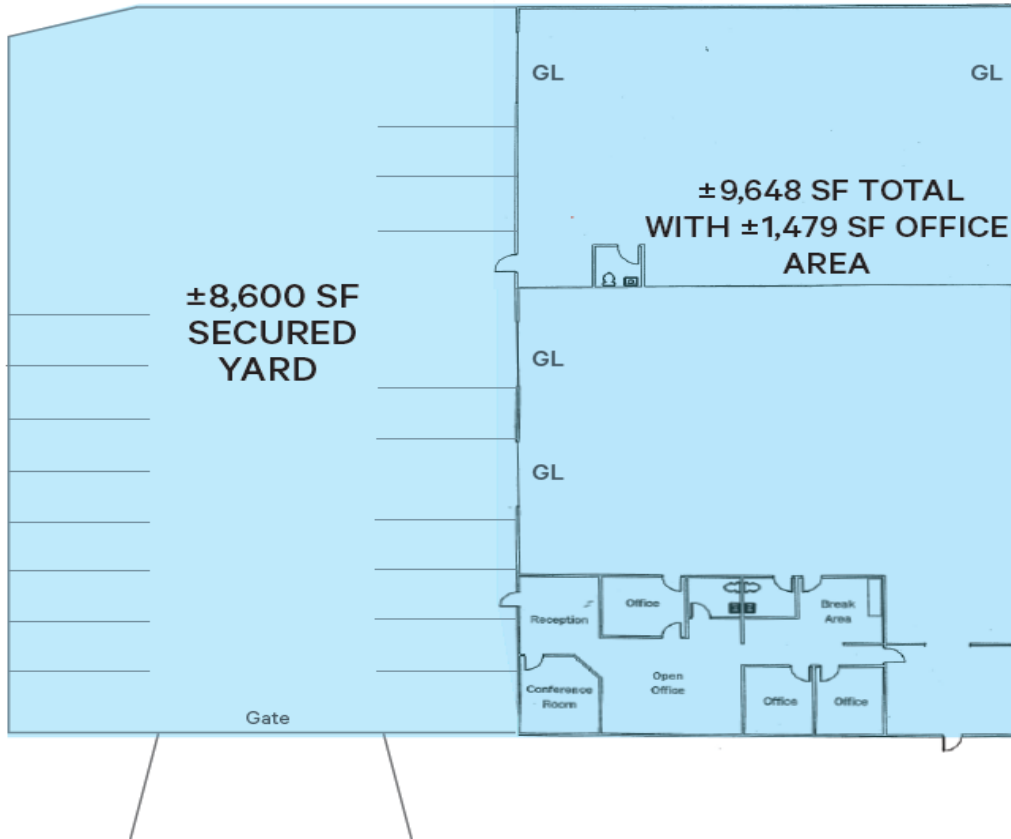
Jeff Kvarme
 First Vice President
 +1 916 203 5257
 jeff.kvarme@cbre.com
 Lic. 01924968

Tyler Howell
 Senior Associate
 +1 916 781 4835
 tyler.howell1@cbre.com
 Lic. 02100245

Courtney Lee
 Associate
 +1 916 906 5544
 courtney.lee@cbre.com
 Lic. 02031694



FLOOR PLAN - UNIT 10 & 11



*Floor plan not to scale

GL= Grade Level Door



Luther Drive

Contact Us

Zac Sweet SIOR
 Senior Vice President
 +1 916 717 4768
 zac.sweet@cbre.com
 Lic. 01352800

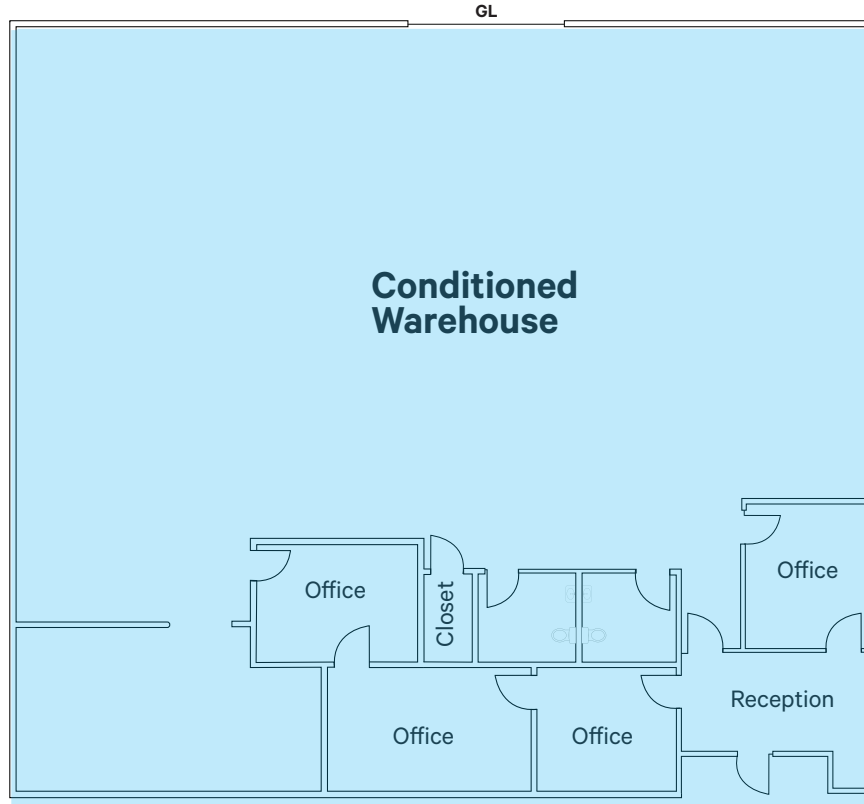
Jeff Kvarme
 First Vice President
 +1 916 203 5257
 jeff.kvarme@cbre.com
 Lic. 01924968

Tyler Howell
 Senior Associate
 +1 916 781 4835
 tyler.howell1@cbre.com
 Lic. 02100245

Courtney Lee
 Associate
 +1 916 906 5544
 courtney.lee@cbre.com
 Lic. 02031694



FLOOR PLAN - UNIT 5



*Floor plan not to scale

GL= Grade Level Door



Luther Drive

Contact Us

Zac Sweet SIOR
 Senior Vice President
 +1 916 717 4768
 zac.sweet@cbre.com
 Lic. 01352800

Jeff Kvarme
 First Vice President
 +1 916 203 5257
 jeff.kvarme@cbre.com
 Lic. 01924968

Tyler Howell
 Senior Associate
 +1 916 781 4835
 tyler.howell1@cbre.com
 Lic. 02100245

Courtney Lee
 Associate
 +1 916 906 5544
 courtney.lee@cbre.com
 Lic. 02031694

