

# FOR SALE

7395 W 18<sup>TH</sup> LANE | HIALEAH, FL 33014

20,238 Sqft



Managed By:



Juan Moscoso

(786) 255-4153  
juan@thehypegroup.com

Pablo Vignolo

(305) 303-3837  
pablo@thehypegroup.com

Raul Pino

(786) 503-5583  
raul@thehypegroup.com



7395 W 18<sup>th</sup> Lane | SALE INFO

## PROPERTY FEATURES

- » (4) Dock-high Loading Doors
- » 20' ft Clear Height
- » Flexible layout suitable for storage, light industrial, or distribution users
- » Central Miami-Dade location serving Hialeah & surrounding markets
- » Convenient access to major highways, Miami-Dade industrial corridors, and Miami International Airport (MIA)
- » Suitable for showroom space
- » Highly sought-after industrial market with 90%+ occupancy
- » Multiple access points from two separate streets  
One enclosed gated area



Sale Price:

**\$5,999,900**



# PROPERTY PHOTOS



Enclosed Gated Area

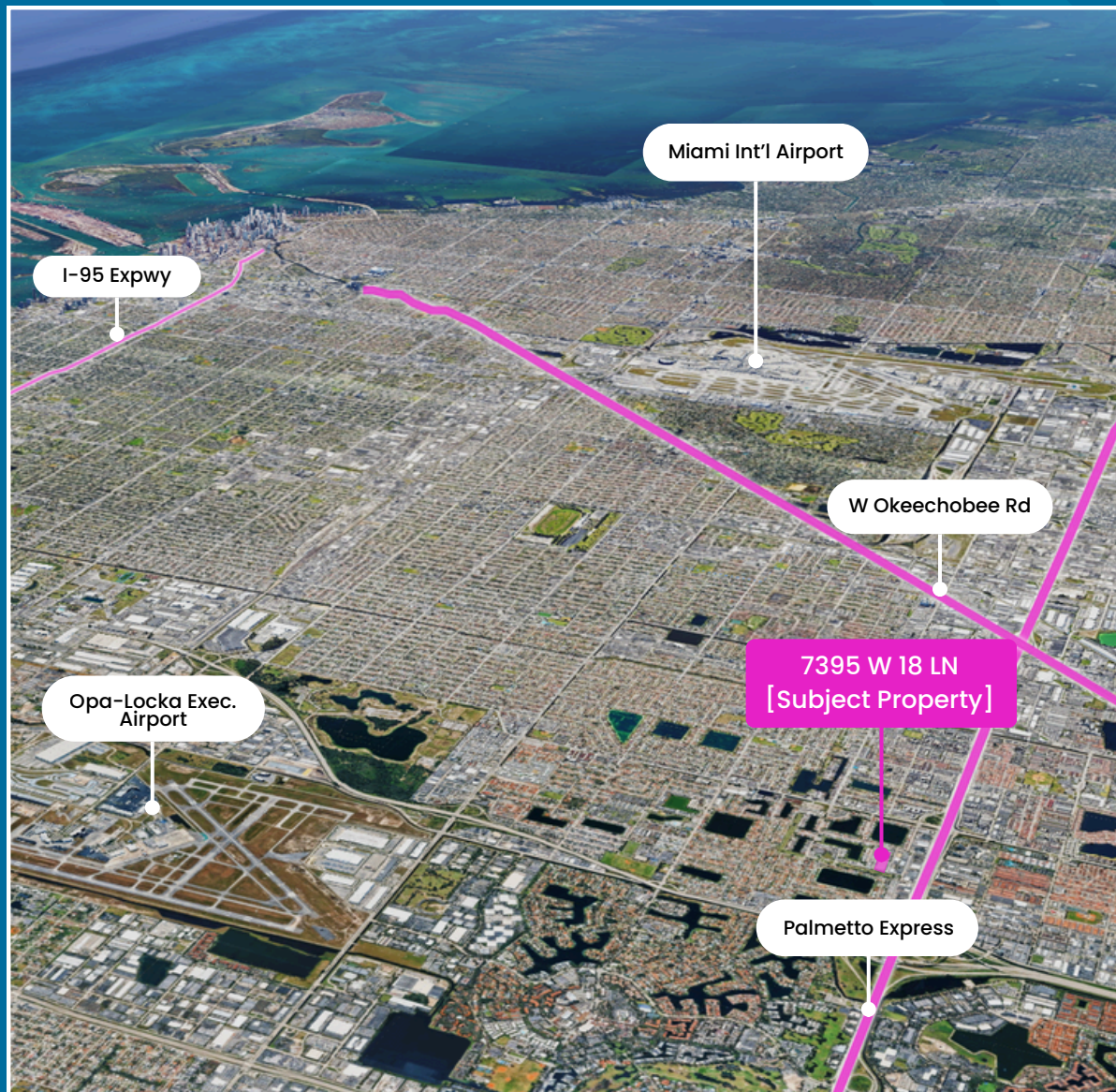


# PROPERTY PHOTOS





# LOCATION HIGHLIGHTS



## I-95 Highway

Regional north-south artery connecting Broward, Miami & the Keys

- Approx. 8-10 miles / ~15-20 minutes

## Opa-Locka Executive Airport

Convenient access for corporate aviation & light cargo

- Approx. 5-6 miles / ~15-20 minutes

## Miami Int'l Airport (MIA)

Direct link to Miami's primary passenger & cargo hub

- Approx. 9 miles / ~20 minutes

## Palmetto Expressway (SR 826)

Fast connection into the Palmetto expressway network

- Approx. 0.5-1 mile / ~3-5 minutes

## Okeechobee Road (US 27)

Immediate access to a major trucking & industrial corridor

- Approx. 2-3 miles / ~5-10 minutes



# CONTACT US

Juan Moscoso

**(786) 255-4153**

juan@thehypegroup.com

Pablo Vignolo

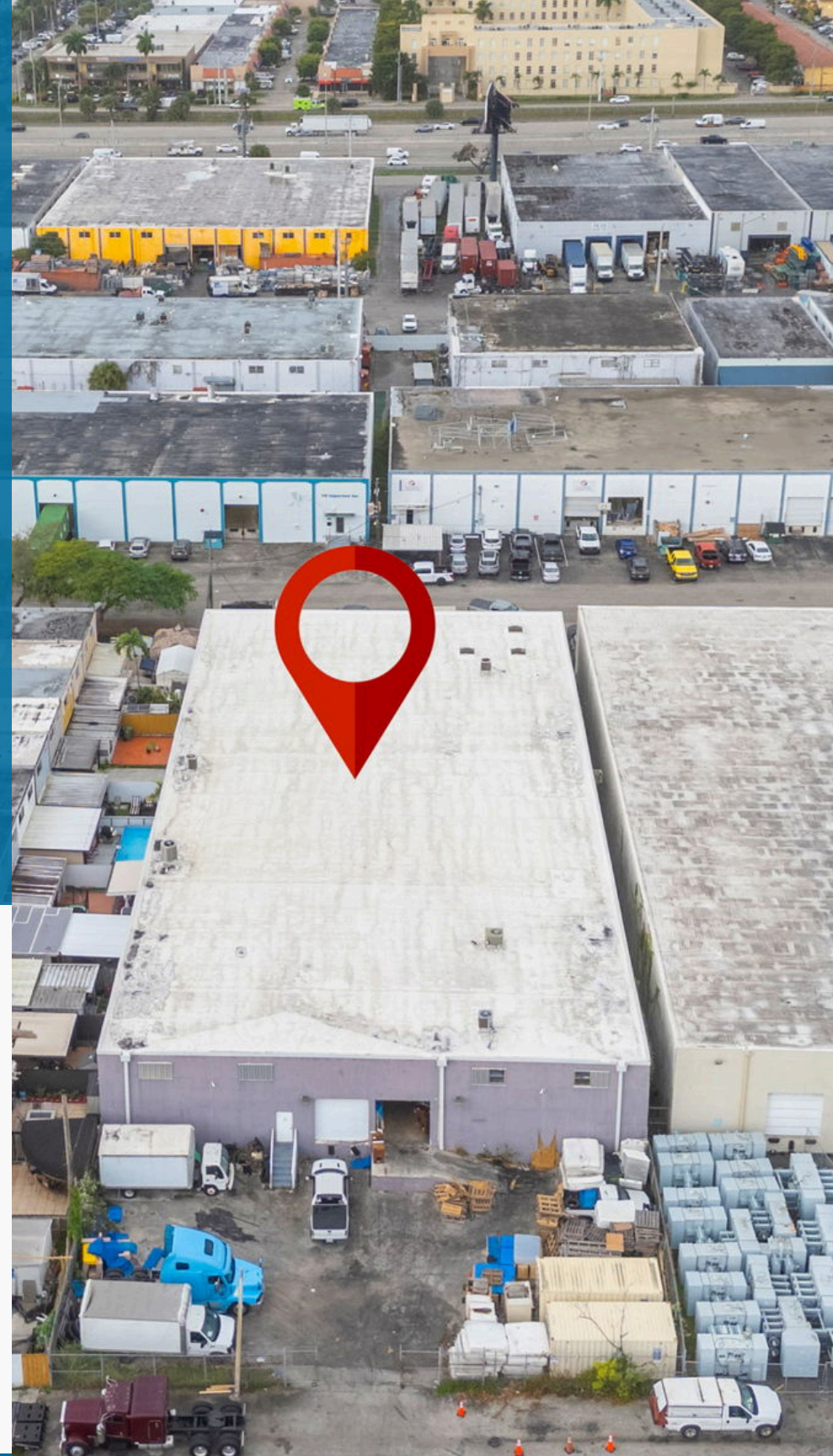
**(305) 303-3837**

pablo@thehypegroup.com

Raul Pino

**(786) 503-5583**

raul@thehypegroup.com



SOLD BY:

MANAGED BY:



## Disclaimer

All information provided in this marketing material is sourced from reliable channels and is subject to errors, omissions, changes, or withdrawal of listings from sale or lease without notice. All square footage, dimensions, floor plans, and technical specifications are approximate and should be independently verified.