

COMMERCIAL FOR LEASE

GERMANTOWN CENTER

3703 NORTH NEWTON STREET, JASPER, IN 47546



OFFERING SUMMARY

BUILDING SF:	220,660
AVAILABLE SF:	4,400 - 14,036
LEASE TYPE:	Triple Net (NNN)
LOT SIZE:	18.09 Acres
PARKING:	Ample
TRAFFIC COUNT:	16,831 AADT
YEAR BUILT:	1986

PROPERTY OVERVIEW

- Three suites available for lease and one outparcel for lease, build to suit, or sale in the Germantown Center shopping complex
- Suite 1400: 4,400 SF
- Suite 1450: 6,787 SF
- Suite 1500: 14,036 SF
- Outparcel: +/- 0.5 Acres
- There is extra, unfinished space behind Suite 1450 that includes 3 loading docks. This can be added to the square footage.



HAHN KIEFER REAL ESTATE SERVICES

1352 E Division St
Evansville, IN 47711



JOE KIEFER

President / Managing Broker
office: (812) 604-5973
cell: 812.604.5973
jkiefer@hahnkiefer.com
License #: RB14037711, Indiana

JOSEY MCLAUGHLIN

Associate Broker
office: (812) 549-9114
cell: (812) 549-9114
jmclaughlin@hahnkiefer.com

SUITE 1400 - FORMER RESTAURANT

3703 NORTH NEWTON STREET | JASPER, IN 47546



HAHN KIEFER REAL ESTATE SERVICES

1352 E Division St
Evansville, IN 47711



JOE KIEFER

President / Managing Broker

O: (812) 604-5973

C: 812.604.5973

jkiefer@hahnkiefer.com

License #: RB14037711, Indiana

JOSEY MCLAUGHLIN

Associate Broker

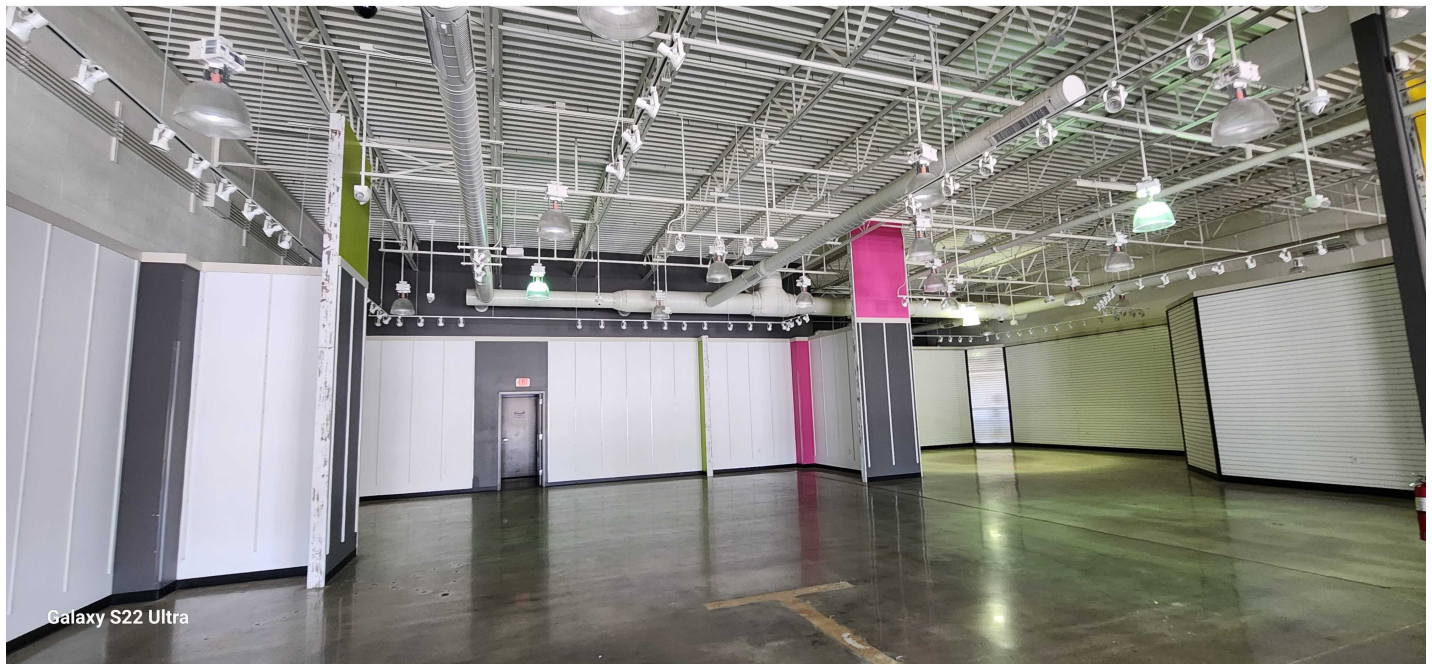
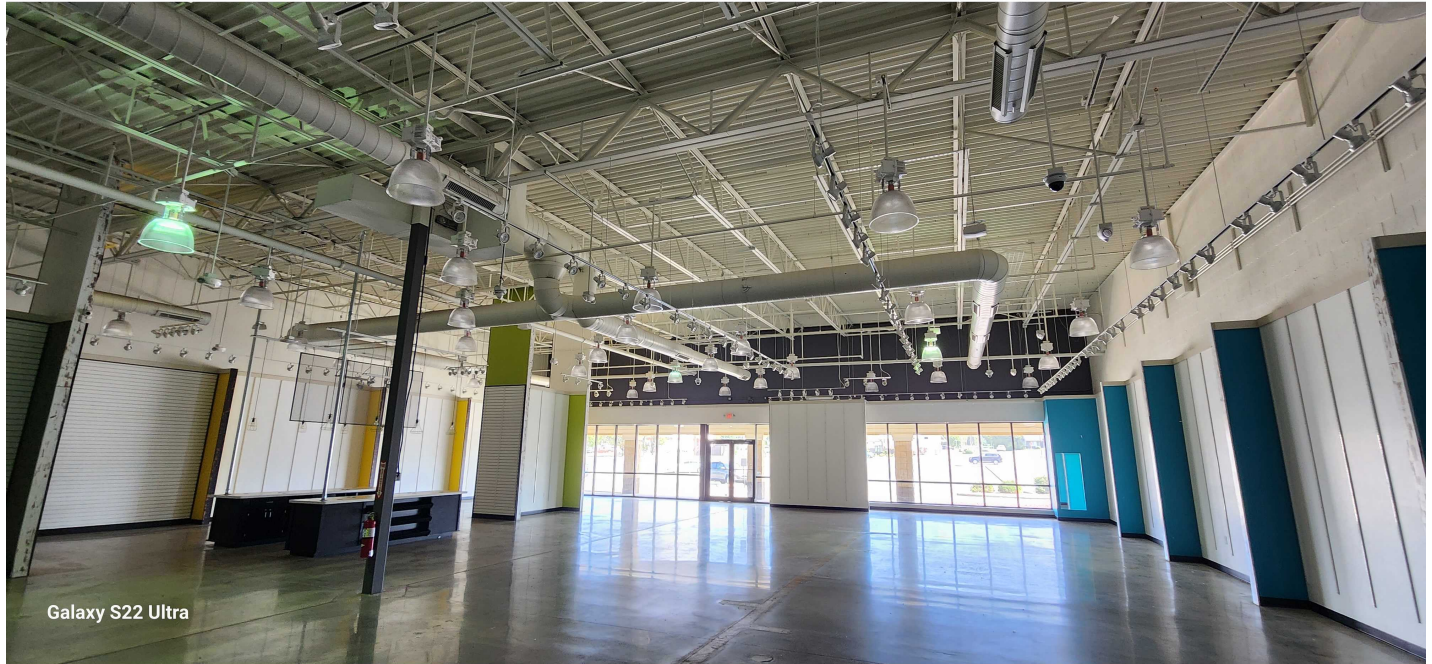
O: (812) 549-9114

C: (812) 549-9114

jmclaughlin@hahnkiefer.com

SUITE 1450 - FORMER CLOTHING STORE

3703 NORTH NEWTON STREET | JASPER, IN 47546



HAHN KIEFER REAL ESTATE SERVICES

1352 E Division St
Evansville, IN 47711



JOE KIEFER

President / Managing Broker

O: (812) 604-5973

C: 812.604.5973

jkiefer@hahnkiefer.com

License #: RB14037711, Indiana

JOSEY MCLAUGHLIN

Associate Broker

O: (812) 549-9114

C: (812) 549-9114

jmclaughlin@hahnkiefer.com

OUTPARCEL AERIAL

3703 NORTH NEWTON STREET | JASPER, IN 47546



HAHN KIEFER REAL ESTATE SERVICES

1352 E Division St
Evansville, IN 47711



JOE KIEFER

President / Managing Broker

O: (812) 604-5973

C: 812.604.5973

jkiefer@hahnkiefer.com

License #: RB14037711, Indiana

JOSEY MCLAUGHLIN

Associate Broker

O: (812) 549-9114

C: (812) 549-9114

jmclaughlin@hahnkiefer.com