

101 North 10th Street – Suite 201

Williamsburg, Brooklyn, NY

Location: Between Wythe Ave and Berry St

Suite 201: 3,900 RSF

Ceiling Height: 13 FT

Highlights:

- Newly renovated office suite located in the heart of Williamsburg.
- Lobby with elevator access.
- Space will be built out with a Kitchenet, Private bathroom, HVAC system, and Verizon Fios.
- Located 3 blocks from the **L** Train Station at Bedford Avenue & 5 Blocks from the **G** Train Station on Manhattan Avenue.
- Surrounded by five major hotels – *The Williamsburg Hotel*, *Wythe Hotel*, *The William Vale*, *The Hoxton*, and *McCarren Hotel & Pool*.



Neighboring Tenants:



Contact Exclusive Leasing Team



Harrison Balisky
516-672-4493
hb@olmstedre.com

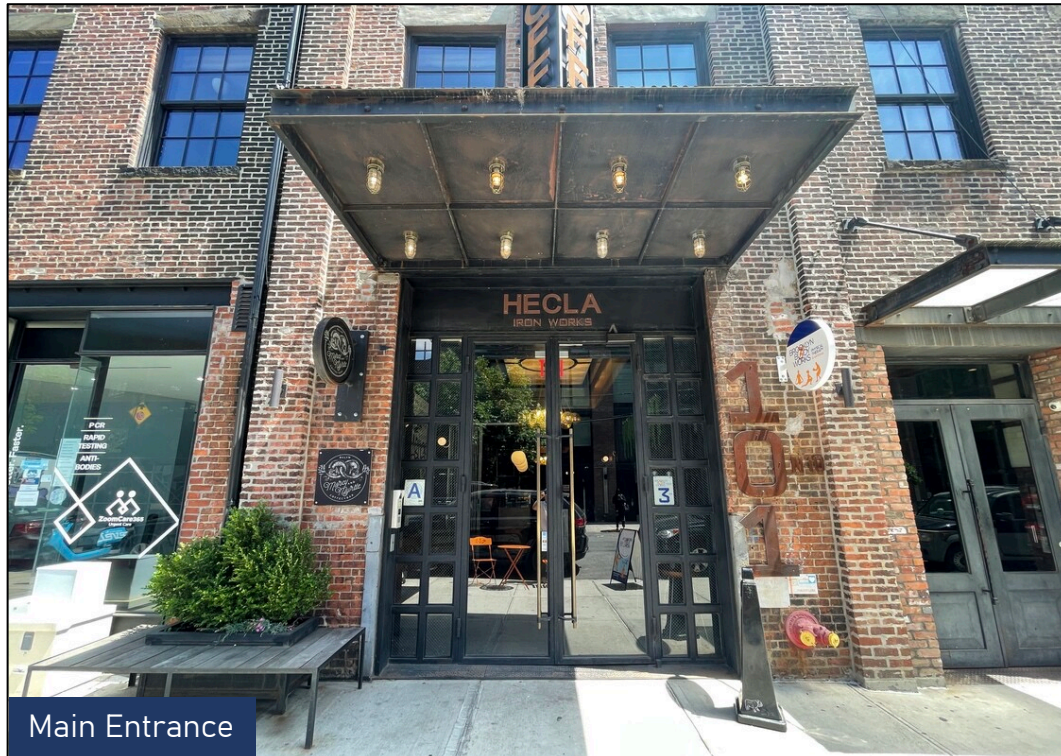
Brad Krosser
862-368-7271
bk@olmstedre.com



101 North 10th Street – Suite 201

Williamsburg, Brooklyn, NY

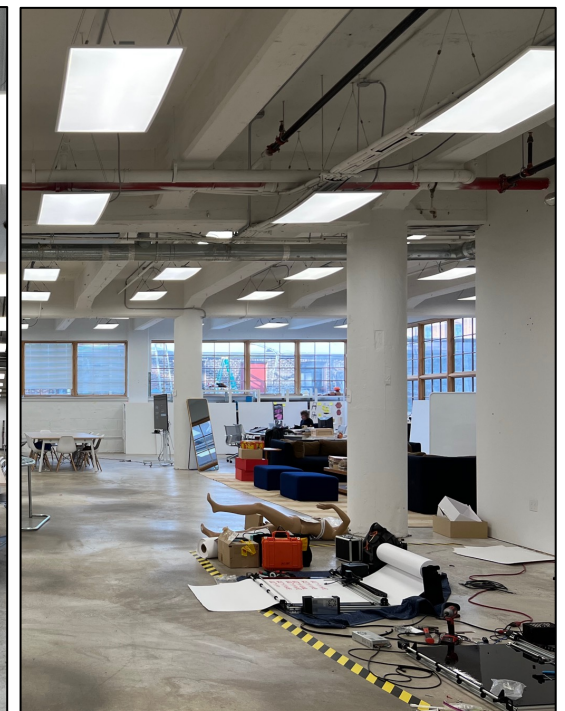
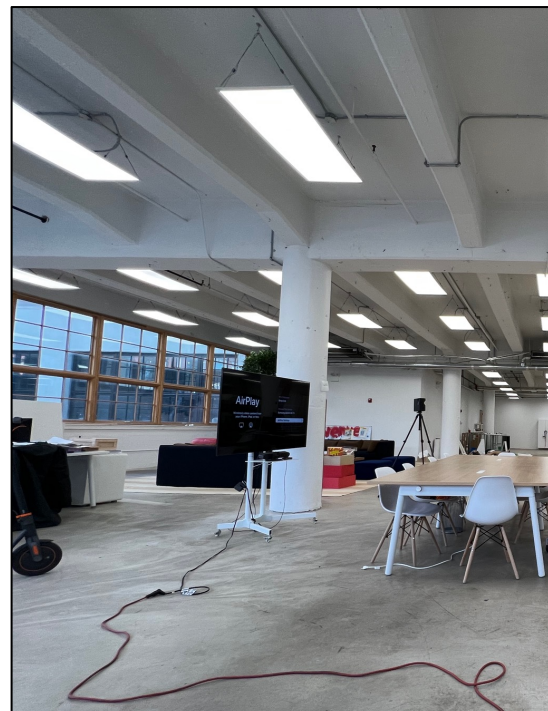
Photos



Main Entrance



Front Lobby

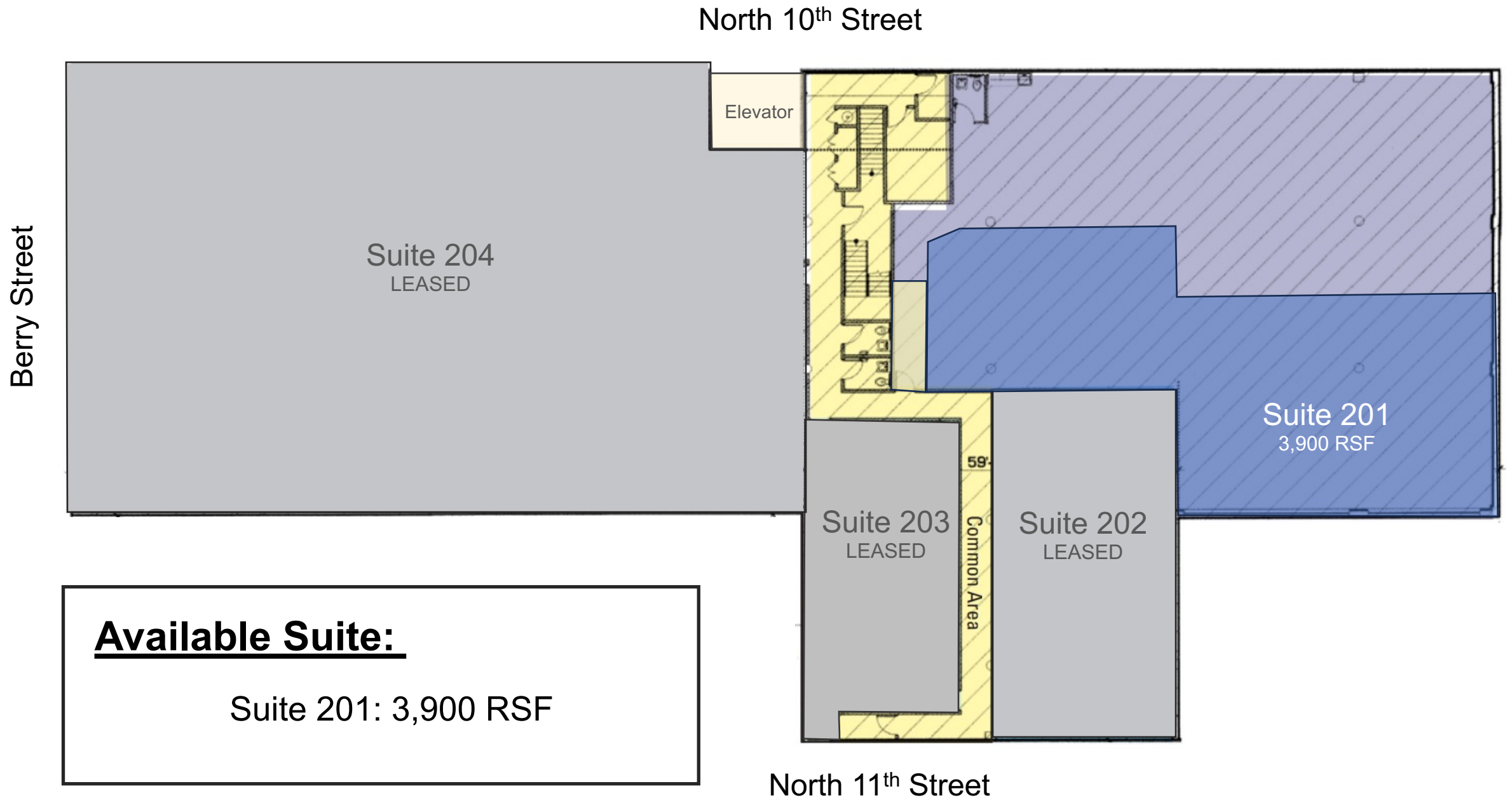




101 N 10th Street – Suite 201

Williamsburg, Brooklyn, NY

Floorplan



Available Suite:

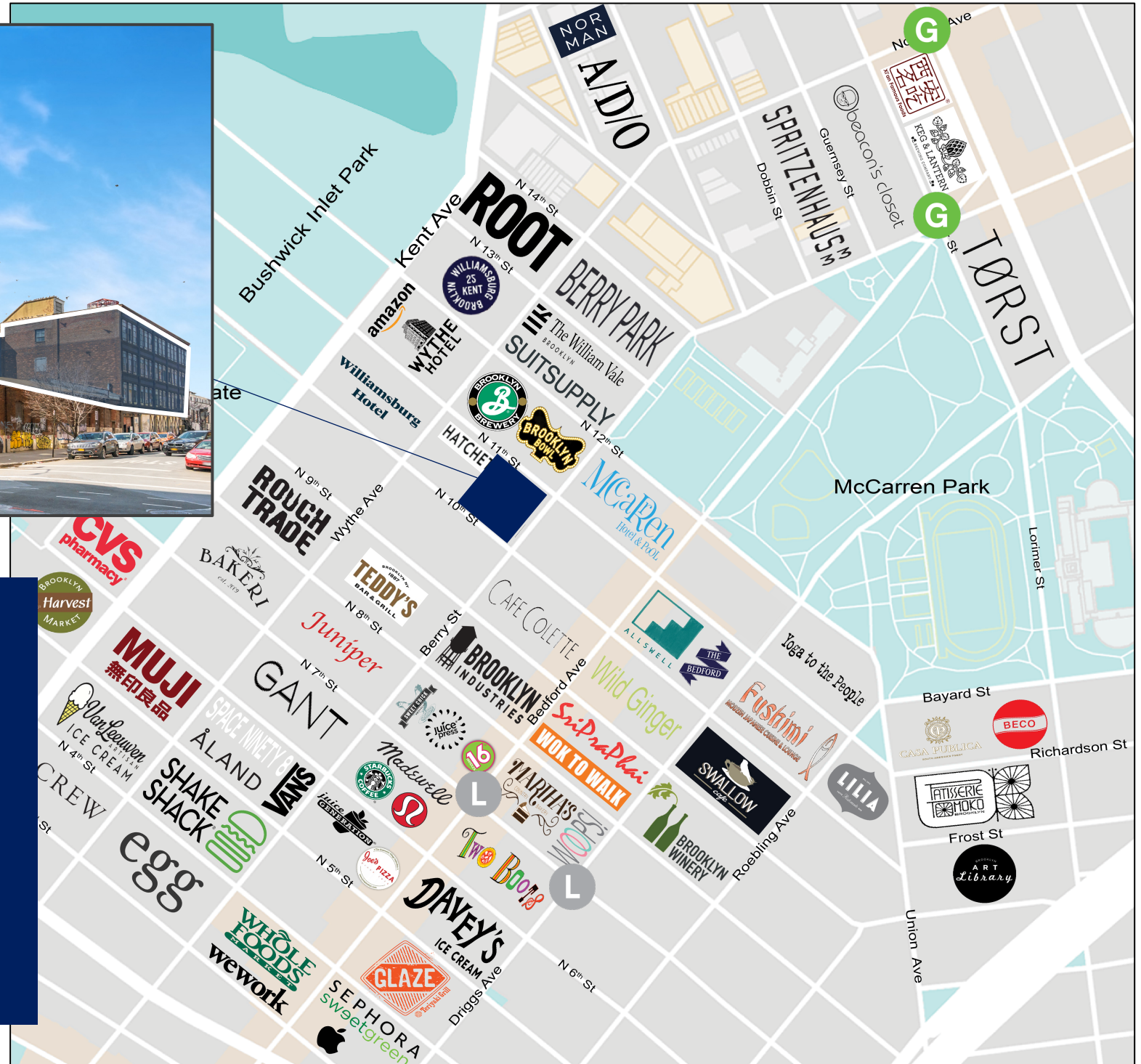
Suite 201: 3,900 RSF



101 N 10th Street – Suite 201

Williamsburg, Brooklyn, NY

Retail Map



Annual Subway Ridership

- L** train is 5 min away at **Bedford Avenue** station with 9,892,516 annual ridership
- G** train is 8 min away at **Nassau Avenue** station with 2,880,235 annual ridership