

# 5380

**S RAINBOW BLVD**

LAS VEGAS, NV 89118

**SPRING VALLEY  
MEDICAL OFFICE I  
FOR LEASE**

**SUITES RANGING FROM  
2,003 - 3,928 SF**



**MIKE TYMCZYN**

VICE PRESIDENT  
702.216.2371 **DIRECT**  
miket@dcghealthcare.com  
S.177844



**HEALTHCARE**

**CORFAC**  
INTERNATIONAL



## PROPERTY HIGHLIGHTS

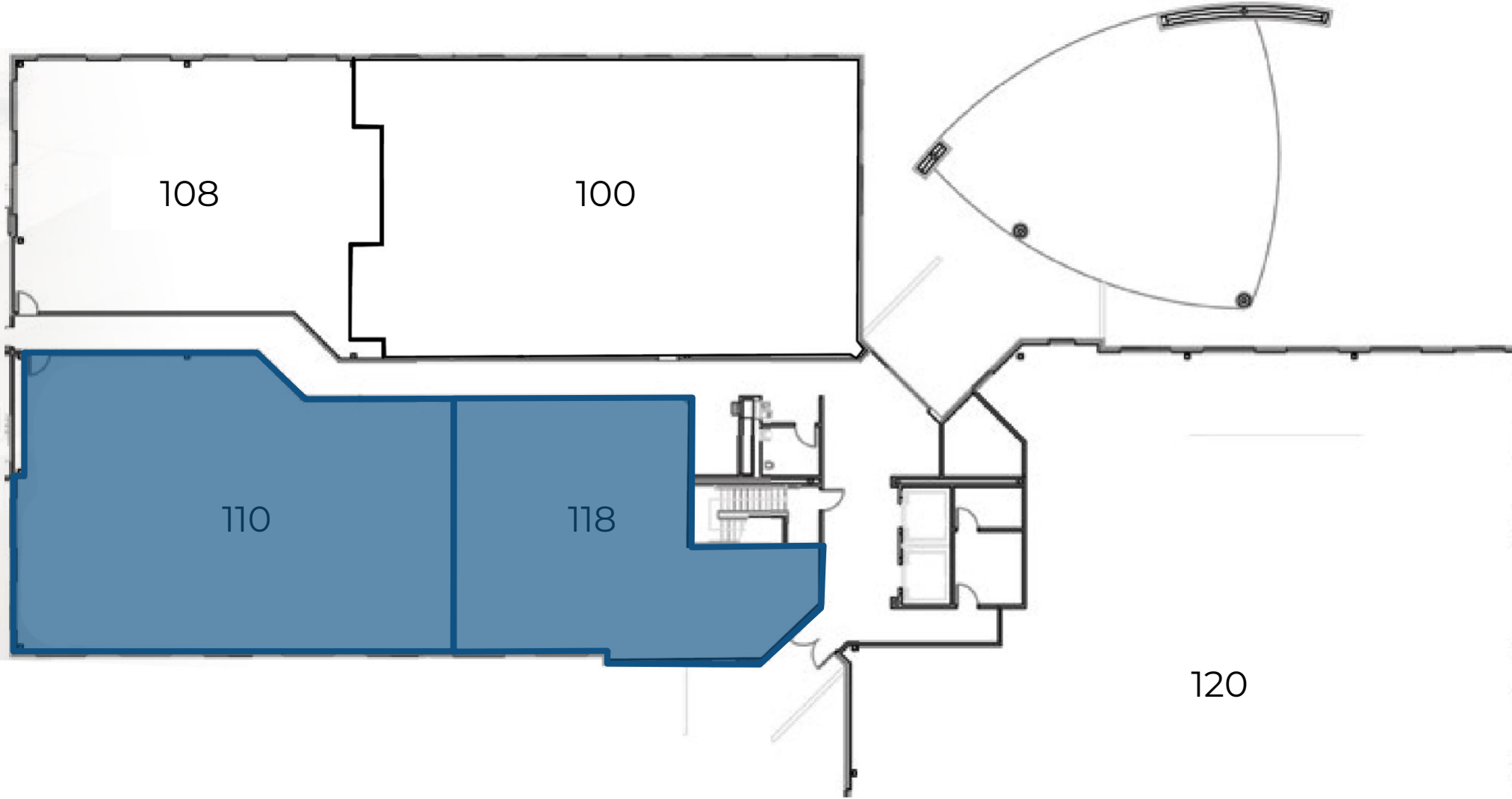
- On the campus of Spring Valley Hospital Medical Center
- Covered, reserved parking at no additional cost
- Easy access from I-15 and I-215
- Current specialties include: **Cardiology - Neurology - Internal Medicine - Podiatry**



**FIRST FLOOR**

AVAILABLE SUITES

SUITE 110	2,780 SF
SUITE 118	2,003 SF



**SECOND** FLOOR

AVAILABLE SUITES

SUITE 210	2,300 SF
-----------	----------



**THIRD** FLOOR

AVAILABLE SUITES

SUITE 330	3,928 SF
-----------	----------

