

CONTAINER STACKING POSSIBLE



TRAILER YARD AVAILABLE FOR LEASE - 162,180 SF

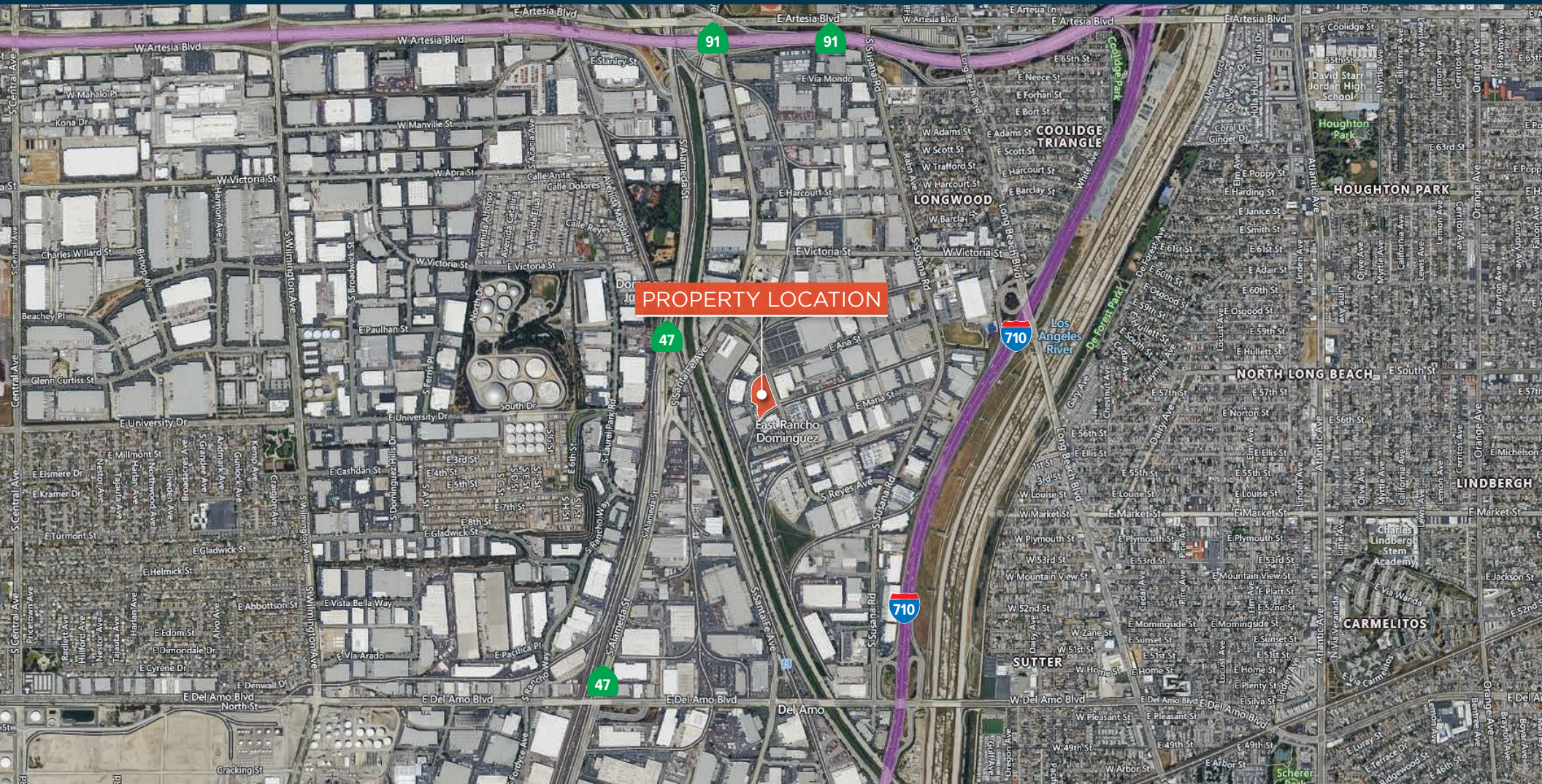
PREMIER INDUSTRIAL SOUTH BAY LAND SITE

2880 E Ana St | Rancho Dominguez, CA



TRAILER YARD FOR LEASE

2880 E Ana St | Rancho Dominguez, CA

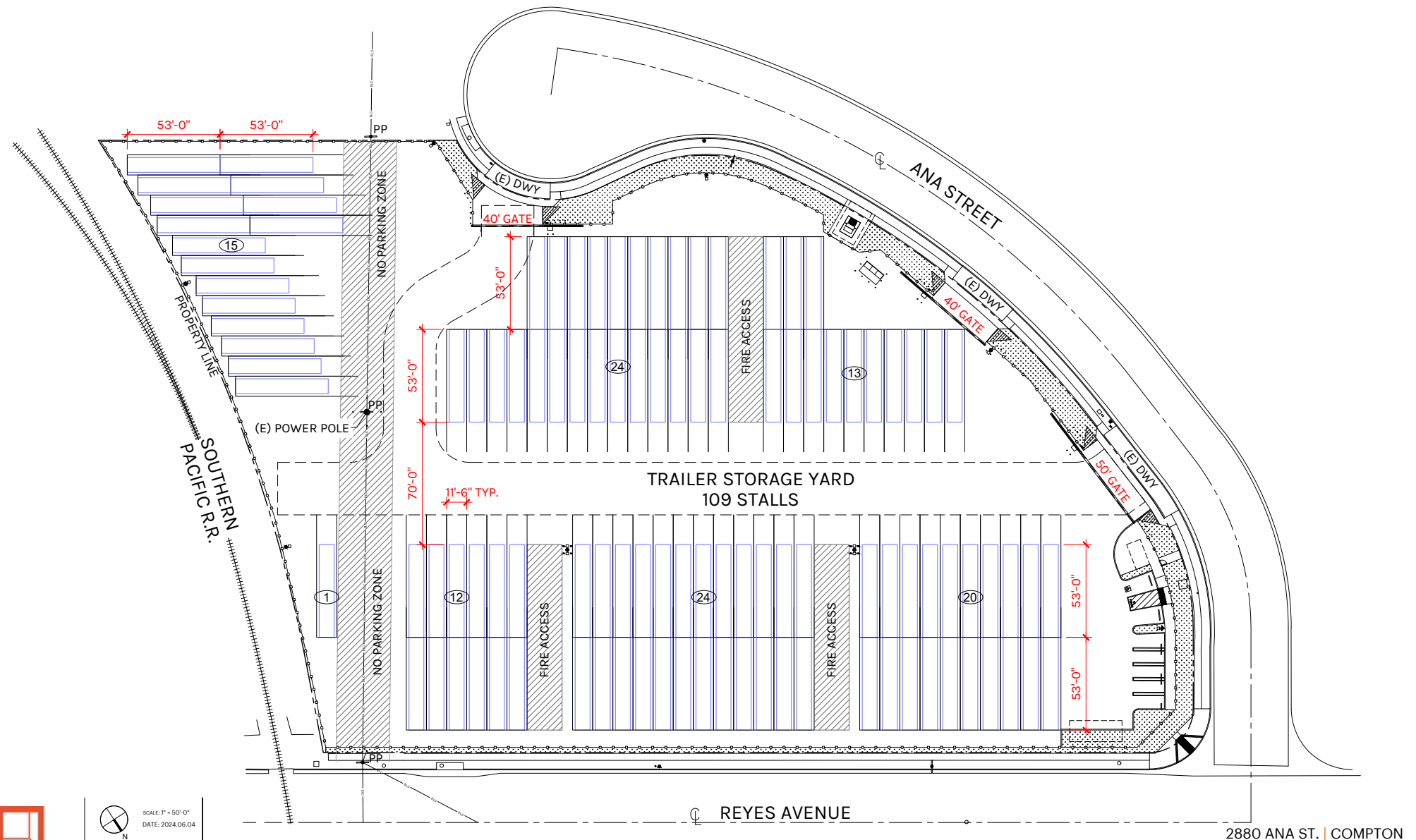


PROPERTY HIGHLIGHTS

- State of the Art Secure and Fenced Logistics Yard
- Land Size: 3.72 Acres (162,180 SF)
- Close Proximity to the Alameda Corridor and 710, 110, 91, and 405 Freeways
- A Strategic Logistics Location 9.1 Miles to Port of Long Beach, 10.4 Miles to Port of Los Angeles, 18.9 Miles to LAX
- Unincorporated LA County Zoning (LCM1.5)
- Cross Streets: Ana Street / Reyes Avenue
- 53' Trailer Stalls - 109
- 40' Trailer Stalls - 149

Site Plan - 53' Trailers

2880 E Ana St | Rancho Dominguez, CA



Rexford
Industrial



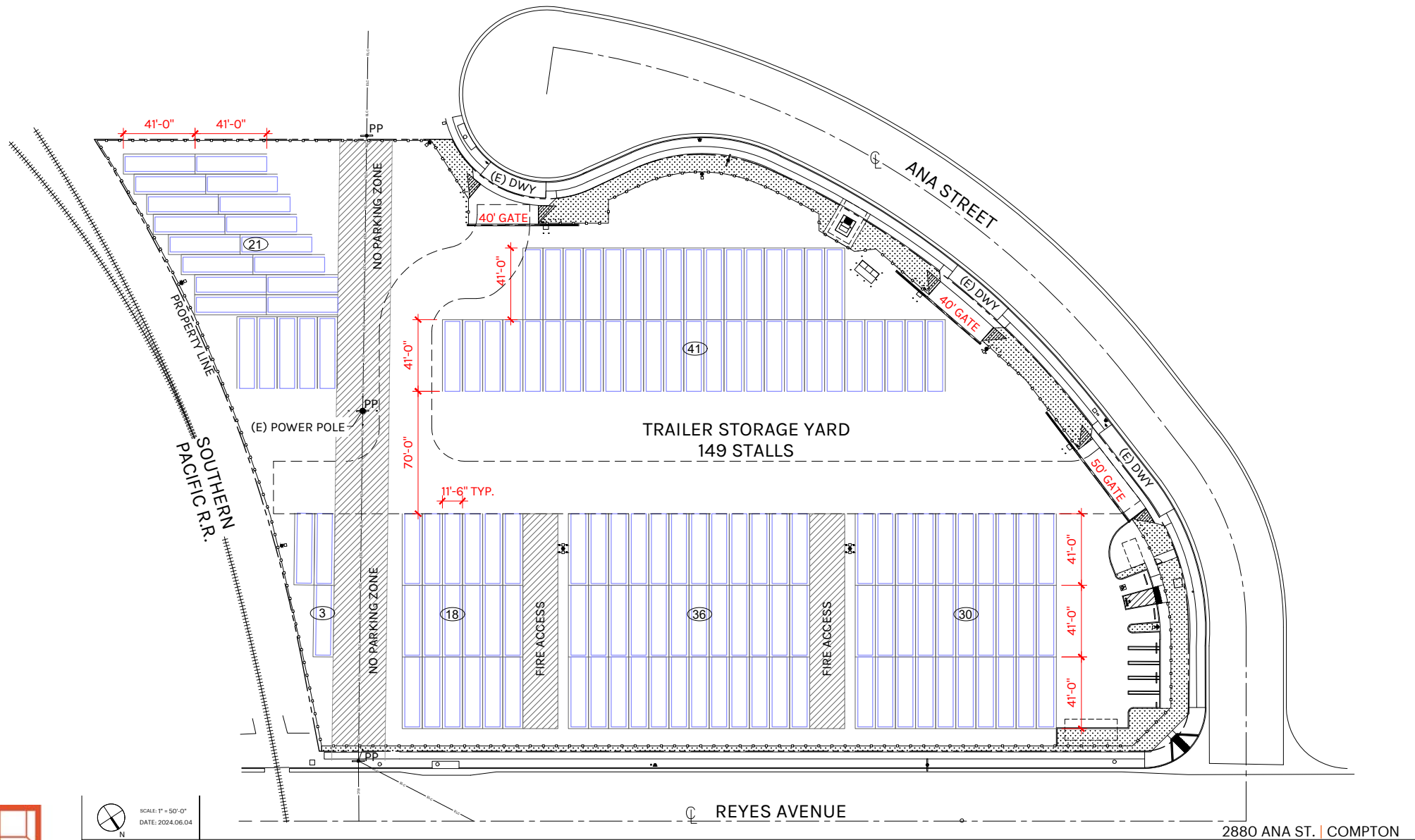
SCALE: 1" = 50'-0"
DATE: 2024.06.04

PLAN LAYOUT SUBJECT TO FIELD CONDITIONS & MAY DIFFER FROM PLAN AS SHOWN. ALL INFORMATION PRESENTED ON THIS DRAWING IS PRESUMED TO BE ACCURATE, HOWEVER TENANT SHOULD VERIFY PERTINENT INFORMATION PRIOR TO COMMITTING TO A LEASE. ANY FURNITURE OR APPLIANCES SHOWN ON PLAN ARE FOR CONCEPT ONLY AND WILL BE TENANT PROVIDED.

2880 ANA ST. | COMPTON

SITE PLAN

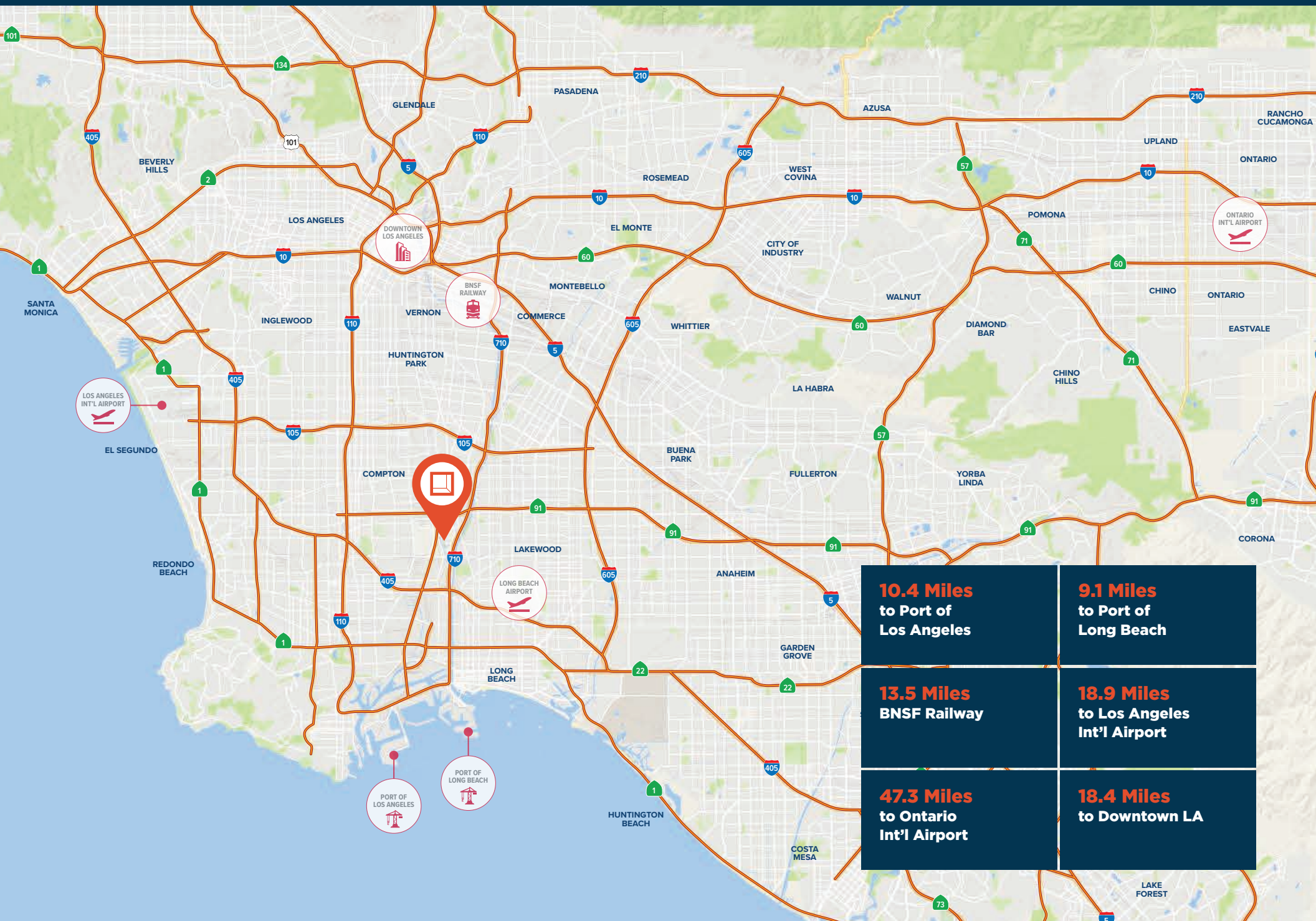
PLAN LAYOUT SUBJECT TO FIELD CONDITIONS AND MAY DIFFER FROM PLAN AS SHOWN. ALL INFORMATION PRESENTED ON THIS DRAWING IS PRESUMED TO BE ACCURATE, HOWEVER TENANT SHOULD VERIFY PERTINENT INFORMATION PRIOR TO COMMITTING TO A LEASE. ANY FURNITURE OR APPLIANCES SHOWN ON PLAN ARE FOR CONCEPT ONLY AND WILL BE TENANT PROVIDED.



2880 ANA ST. | COMPTON

SITE PLAN

PLAN LAYOUT SUBJECT TO FIELD CONDITIONS AND MAY DIFFER FROM PLAN AS SHOWN. ALL INFORMATION PRESENTED ON THIS DRAWING IS PRESUMED TO BE ACCURATE, HOWEVER TENANT SHOULD VERIFY PERTINENT INFORMATION PRIOR TO COMMITTING TO A LEASE. ANY FURNITURE OR APPLIANCES SHOWN ON PLAN ARE FOR CONCEPT ONLY AND WILL BE TENANT PROVIDED.





**Rexford
Industrial**

Leasing Contacts

Jake Poxon
Executive Vice President & Principal
323.767.2055
jpoxon@lee-associates.com
LIC # 01968984

David Brandt
Executive Vice President & Partner
323.767.2104
dbrandt@lee-associates.com
LIC # 00999100



Lee & Associates - Los Angeles Central
5675 Telegraph Rd, Ste 300
Commerce, CA 90040
CORP ID 01125429

323.720.8484
Lee-Associates.com

The information contained herein is obtained from sources believed to be reliable. However, we have not verified it and make no guarantees, warranties or representations as to the completeness or accuracy thereof. The presentation of this property is used for example and is submitted subject to errors, omissions, change of price or conditions, and is subject to prior sale, lease or withdrawal without notice.