

FOR LEASE

HILLS TECH EXECUTIVE PARK



UP TO 9,996 CONTIGUOUS SQUARE FEET AVAILABLE

38855 HILLS TECH DRIVE, FARMINGTON HILLS, MI

CBRE

BUILDING OVERVIEW

- Newly Renovated With Many Upgrades
- Up To 9,996 SF Contiguous Available With Office To Suit; Or;
- Individual Units:
 - 2,380 SF
 - 3,806 SF
 - 3,810 SF
- Excellent Location With Close Proximity to M-5/I-696/I2 Mile Rd & Haggerty Rd
- Each Unit Has A Grade Level Door
- High End Finishes Provide Professional Corporate Setting

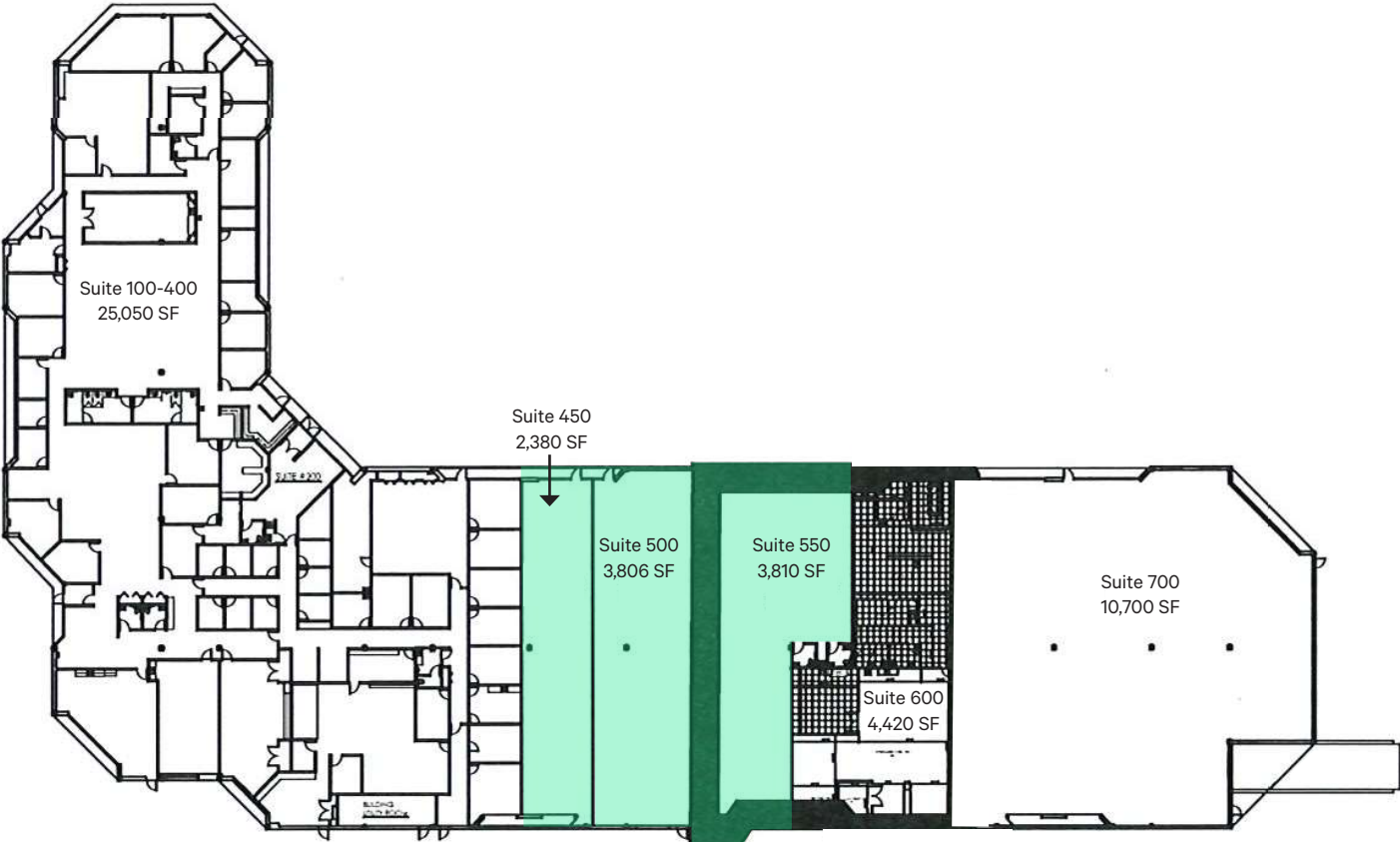


AVAILABLE SUITES: FROM 2,380 SF - 9,996 SF

| SUITE # | OFFICE AREA | WAREHOUSE AREA | TOTAL SF |
|---------|-------------|----------------|----------|
| 450 | 1,190 SF | 1,190 SF | 2,380 SF |
| 500 | 2,283 SF | 1,522 SF | 3,806 SF |
| 550 | To Suit | To Suit | 3,810 SF |

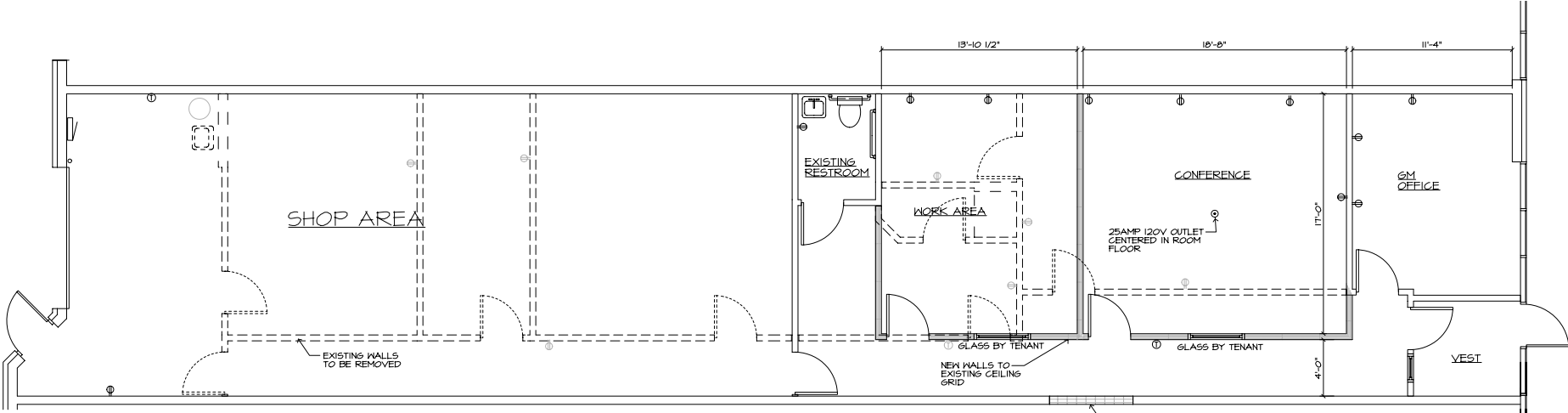


OVERALL FLOOR PLAN



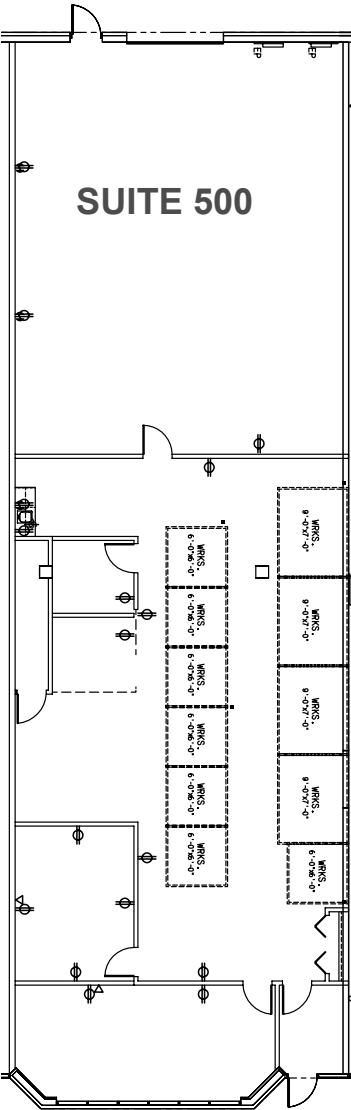
FLOOR PLAN SUITE 450

2,380 SF



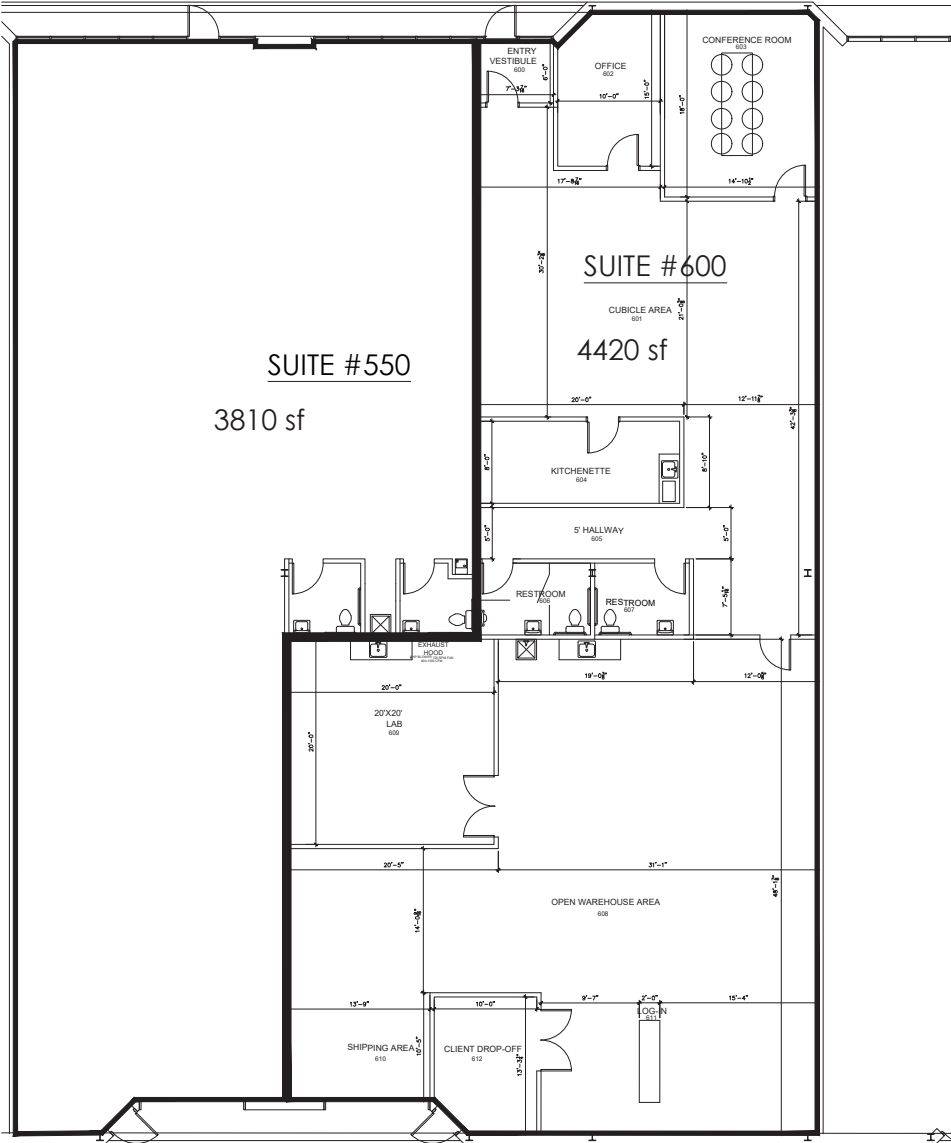
FLOOR PLAN SUITE 500

3,806 SF



FLOOR PLAN SUITE 550

3,810 SF





HILLS TECH EXECUTIVE PARK

FOR MORE INFORMATION, PLEASE CONTACT:

CHARLES GINSTER
Senior Vice President
248 248 760 2439
chuck.ginster@cbre.com

JAKE GINSTER
Associate
248 633 6119
jake.ginster@cbre.com

A.J RICH
Senior Associate
248 936 6860
aj.rich@cbre.com

© 2024 CBRE, Inc. All rights reserved. This information has been obtained from sources believed reliable but has not been verified for accuracy or completeness. You should conduct a careful, independent investigation of the property and verify all information. Any reliance on this information is solely at your own risk. CBRE and the CBRE logo are service marks of CBRE, Inc. All other marks displayed on this document are the property of their respective owners, and the use of such logos does not imply any affiliation with or endorsement of CBRE. PMStudio_September2024

CBRE