



FOR LEASE

Highway 10 Office Park

16603-16623 Cantrell Road | Little Rock, AR 72223

Features

- Suites from 383 - 2,809 SF
- Executive suite available
- Ample front-door parking
- Traffic count: approx. 18,000 vehicles per day along Cantrell Road
- Great visibility with Cantrell Road frontage

CONTACT US

Graham Gordon

+1 501 978 6503

graham.gordon@ar.colliers.com

Andrew Wiechern

+1 501 850 0733

andrew.wiechern@ar.colliers.com

This document/email has been prepared by Colliers for advertising and general information only. Colliers makes no guarantees, representations or warranties of any kind, expressed or implied, regarding the information including, but not limited to, warranties of content, accuracy and reliability. Any interested party should undertake their own inquiries as to the accuracy of the information. Colliers excludes unequivocally all inferred or implied terms, conditions and warranties arising out of this document and excludes all liability for loss and damages arising there from. This publication is the copyrighted property of Colliers and /or its licensor(s). © 2025. All rights reserved. This communication is not intended to cause or induce breach of an existing listing agreement. Colliers International Group Inc.

Colliers | AR

1 Allied Drive | Suite 1500

Little Rock, AR 72202

P: +1 501 372 6161

colliers.com/arkansas

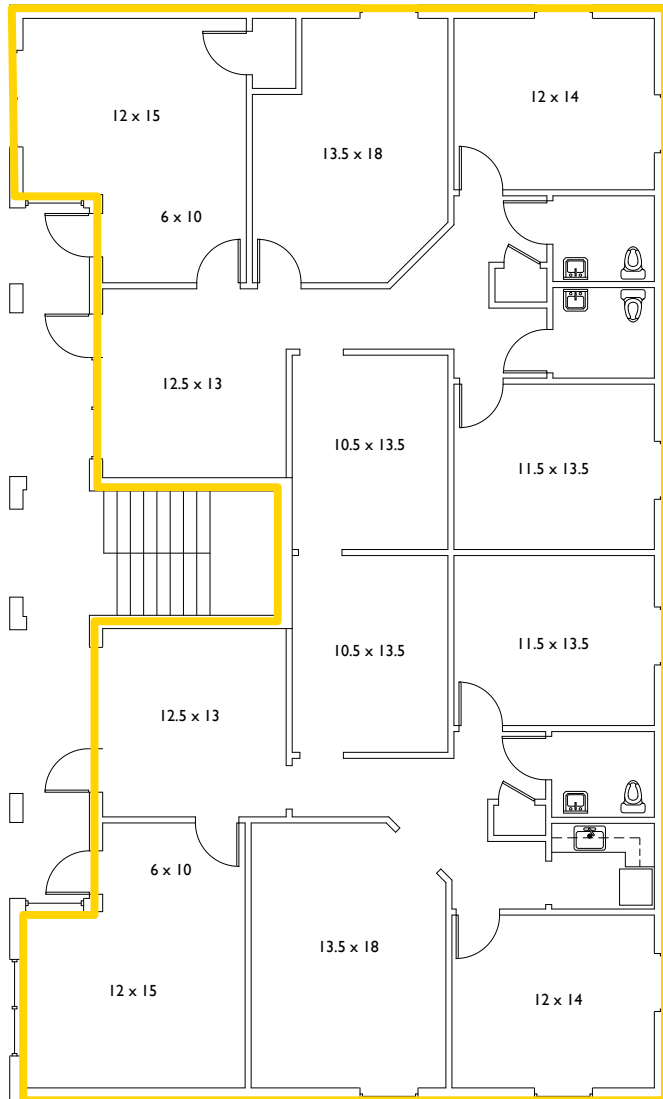


Available Suites

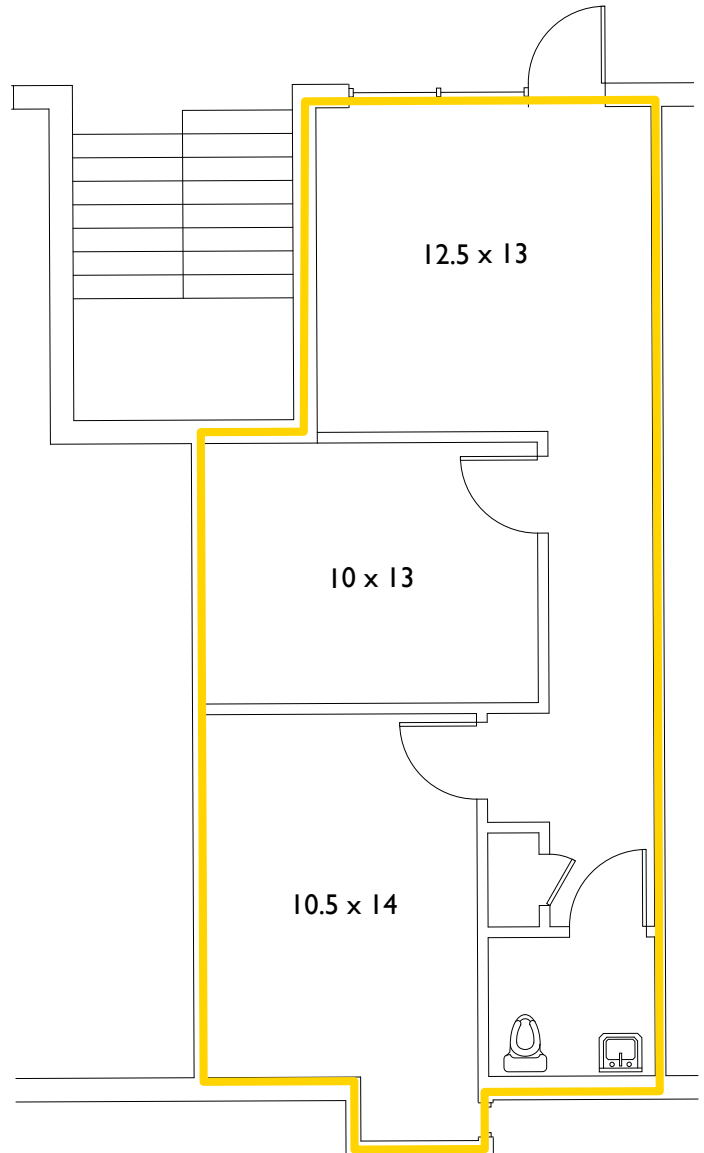
Suite 1	2,809 RSF (Available 3/2026)	Suite 6	1,407 SF
Suite 2B	631 SF	Suite 9	640 SF
Suite 3D	Executive Suite	Suite 10	766 SF



Suite 1 Floor Plan
- **2,809 RSF**



Suite 2B Floor Plan
- **631 RSF**



Contact us:

Graham Gordon

+1 501 978 6503

graham.gordon@ar.colliers.com

Andrew Wiechern

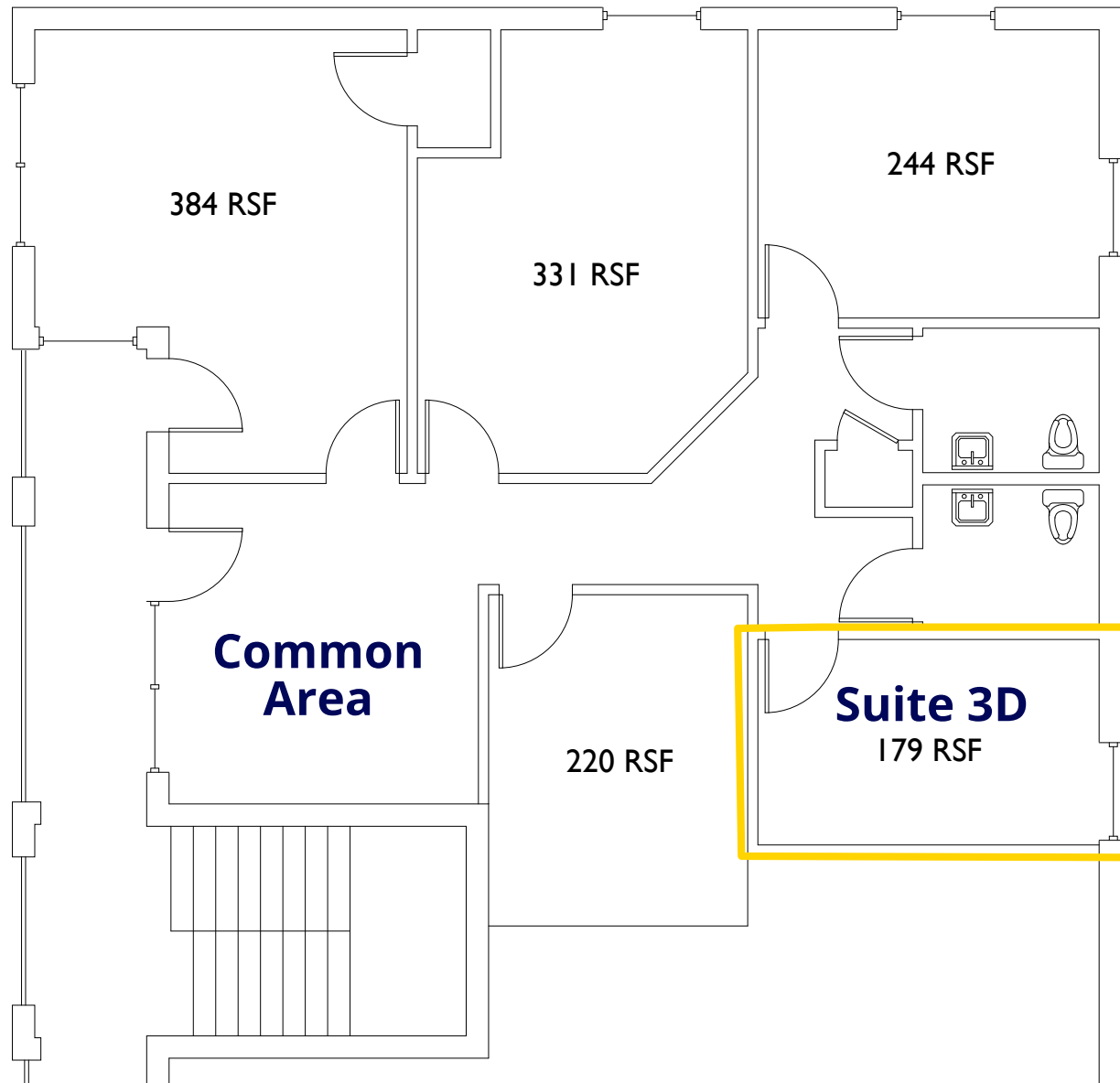
+1 501 850 0733

andrew.wiechern@ar.colliers.com



Executive Suites Floor Plan

Suite 3D - 179 RSF



Contact us:

Graham Gordon

+1 501 978 6503

graham.gordon@ar.colliers.com

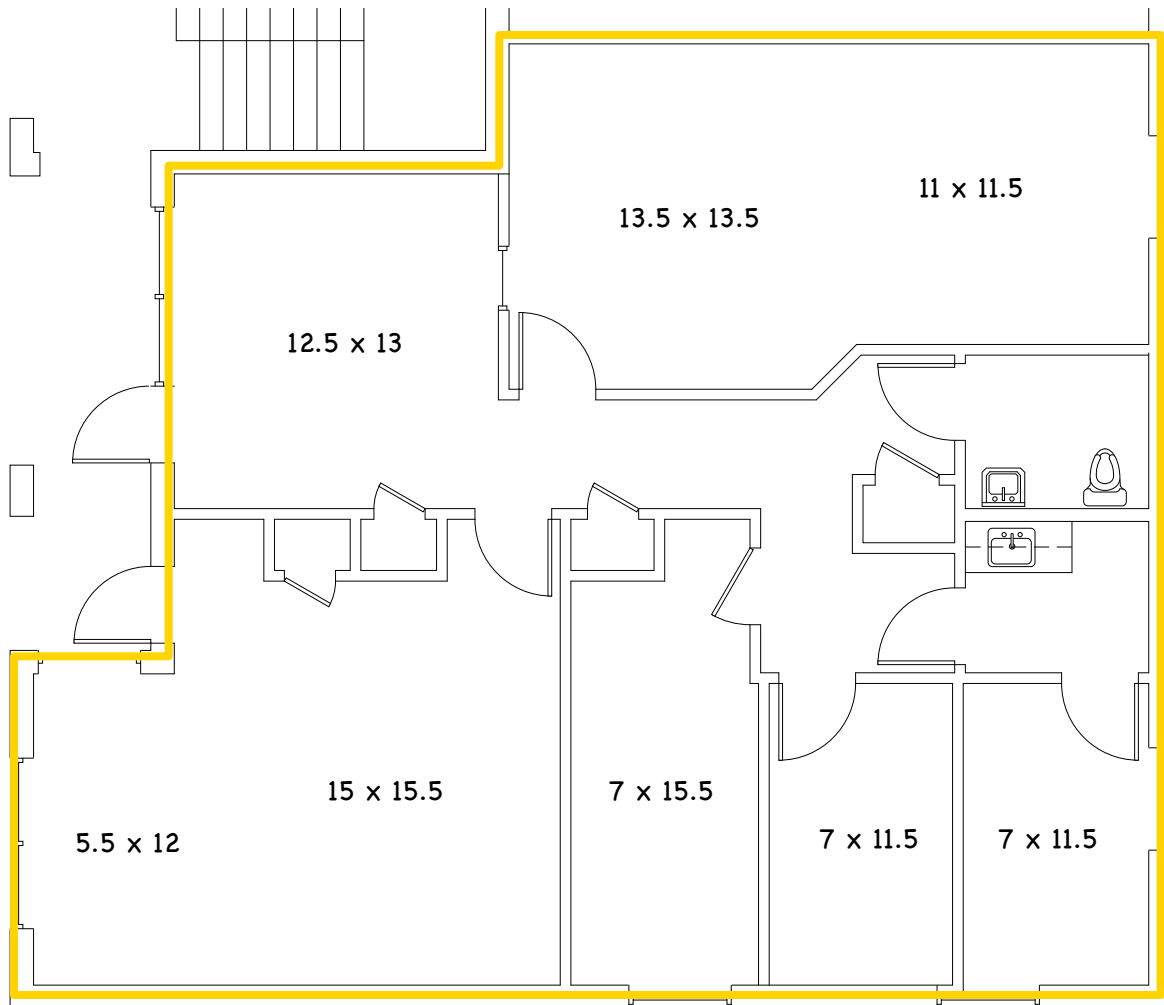
Andrew Wiechern

+1 501 850 0733

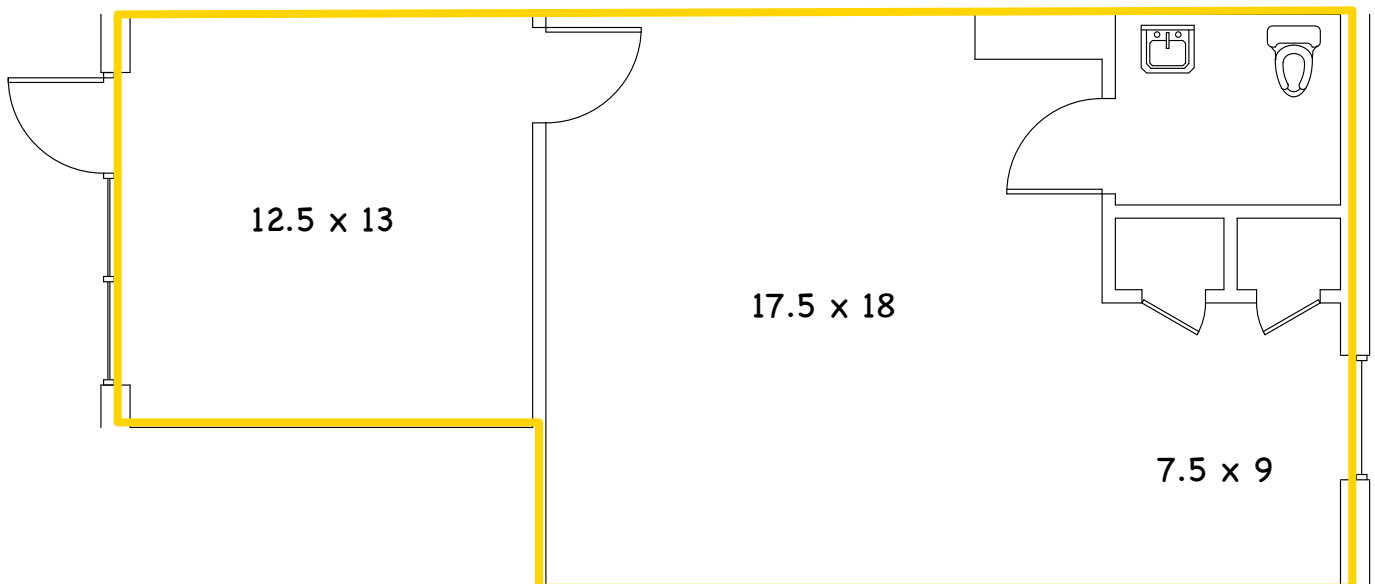
andrew.wiechern@ar.colliers.com



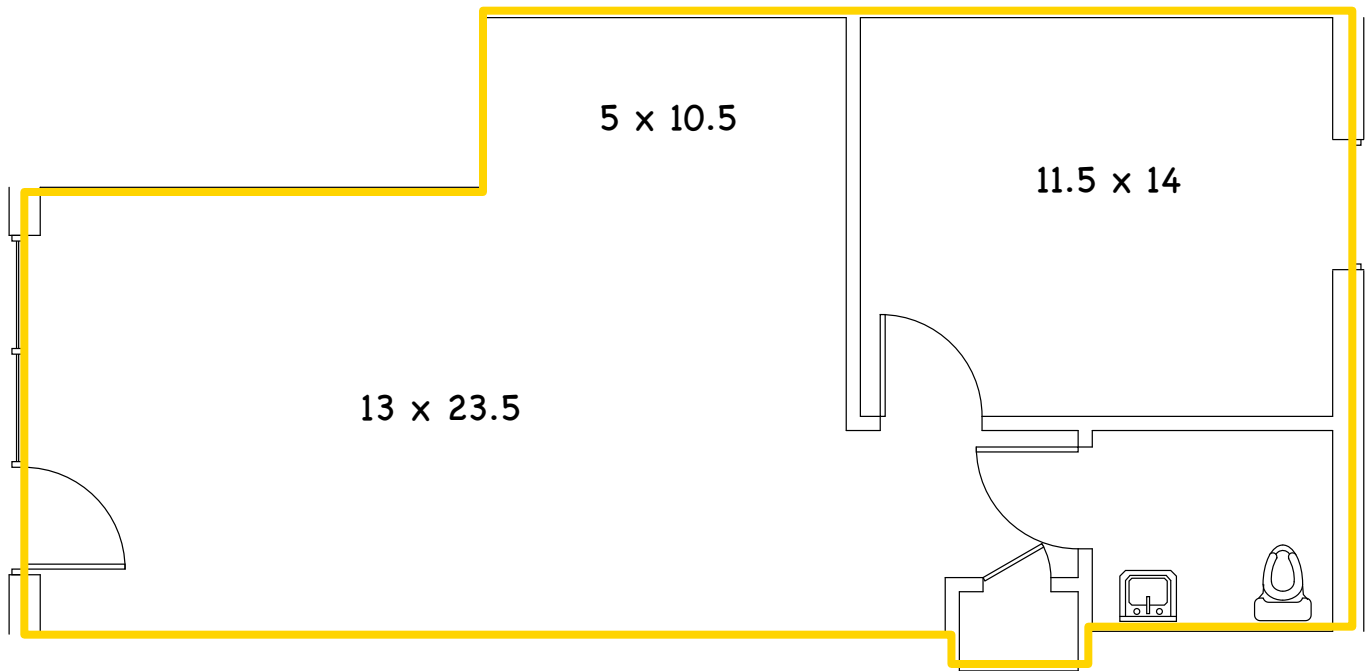
Suite 6 Floor Plan
- **1,407 RSF**



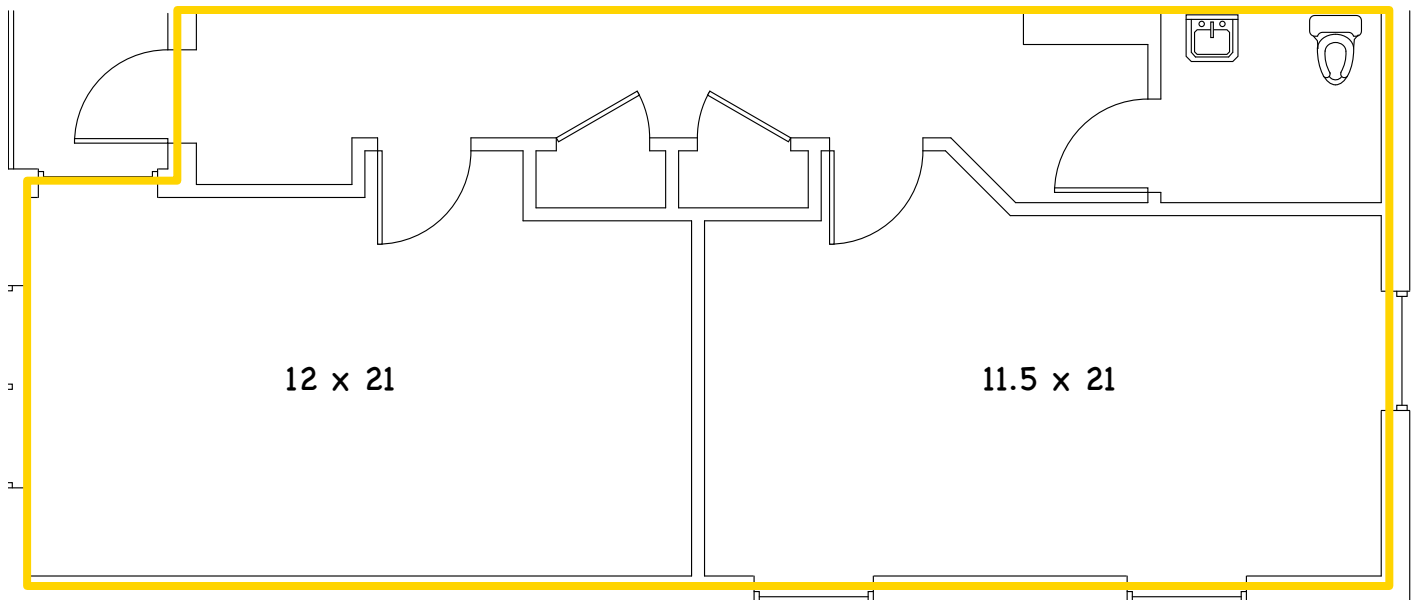
Suite 8 Floor Plan
- **635 RSF**



Suite 9 Floor Plan
- **640 RSF**



Suite 10 Floor Plan
- **766 RSF**



Contact us:

Graham Gordon

+1 501 978 6503

graham.gordon@ar.colliers.com

Andrew Wiechern

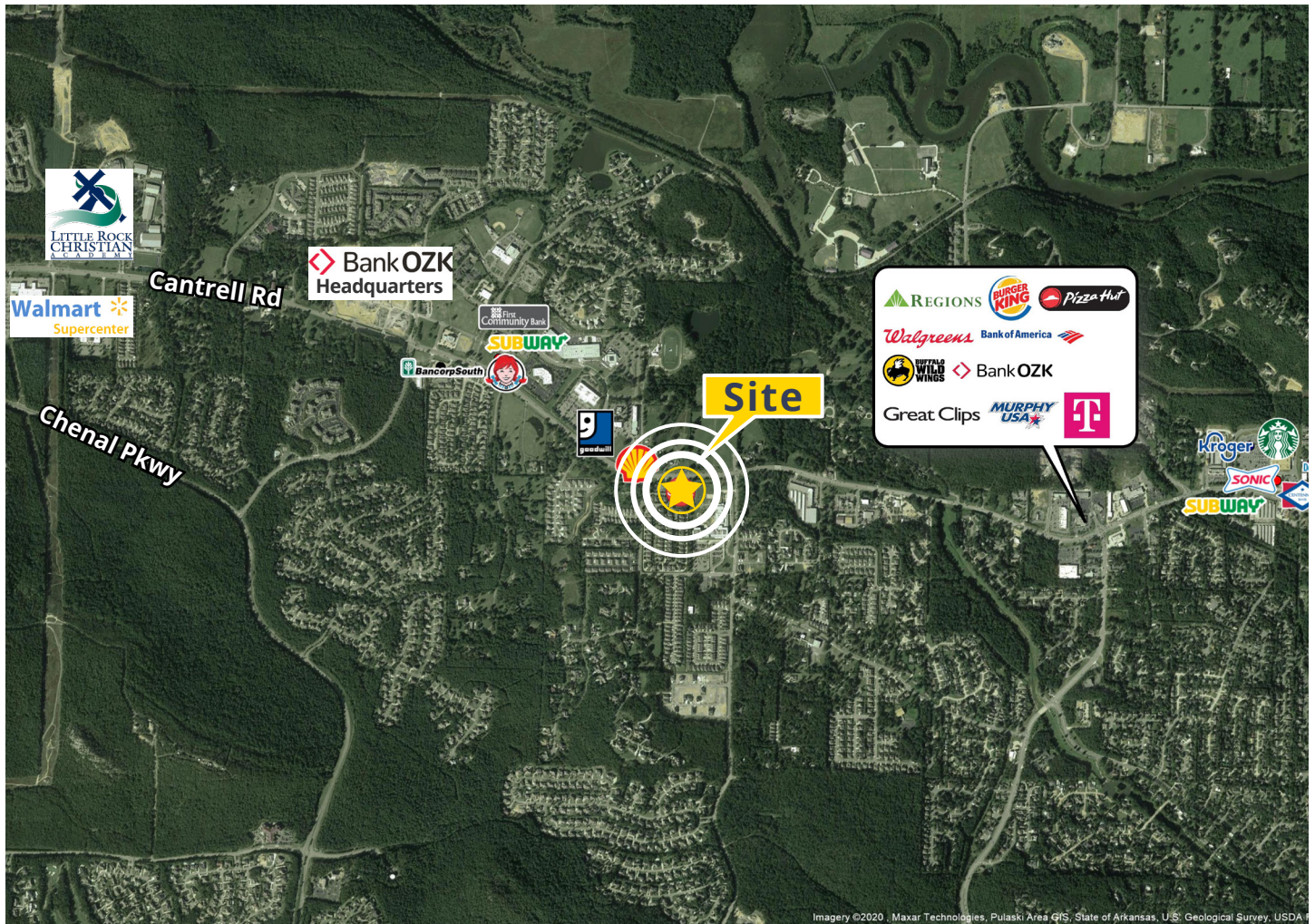
+1 501 850 0733

andrew.wiechern@ar.colliers.com



16603-16623 Cantrell Road | Little Rock, AR 72223

Neighborhood Aerial



Contact us:

Graham Gordon

+1 501 978 6503

graham.gordon@ar.colliers.com

Andrew Wiechern

+1 501 850 0733

andrew.wiechern@ar.colliers.com

Colliers | AR

1 Allied Drive | Suite 1500

Little Rock, AR 72202

P: +1 501 372 6161

colliers.com/arkansas

Interior Photos



Contact us:

Graham Gordon

+1 501 978 6503

graham.gordon@ar.colliers.com

Andrew Wiechern

+1 501 850 0733

andrew.wiechern@ar.colliers.com



Exterior Photos



Contact us:

Graham Gordon

+1 501 978 6503

graham.gordon@ar.colliers.com

Andrew Wiechern

+1 501 850 0733

andrew.wiechern@ar.colliers.com

