



FOR **LEASE**

SHOWROOM AND WAREHOUSE SPACE

10903 MCCORMICK RD | HUNT VALLEY, MARYLAND 21031



MACKENZIE

COMMERCIAL REAL ESTATE SERVICES, LLC

PROPERTY OVERVIEW

HIGHLIGHTS:

- 8,000 SF \pm of showroom and warehouse space spanning over two floors
- Both spaces have at-grade access
- Easy access to I-83 and York Rd (MD-45)
- Close proximity to many amenities and light rail stop
- Fenced-in back lot

BUILDING SIZE:	8,000 SF \pm
LOT SIZE:	0.71 ACRES \pm
DRIVE-INS:	UPPER LEVEL: 10' x 12' LOWER LEVEL: 10' x 8' 8' x 8'
DOCKS:	ONE (1) EXTERIOR PLATFORM DOCK
STORIES:	TWO (2)
PARKING:	3.06/1,000 SF
CLEAR:	18'-20' UPPER LEVEL 11' LOWER LEVEL
ZONING:	ML-IM
RENTAL RATE:	WITHHELD



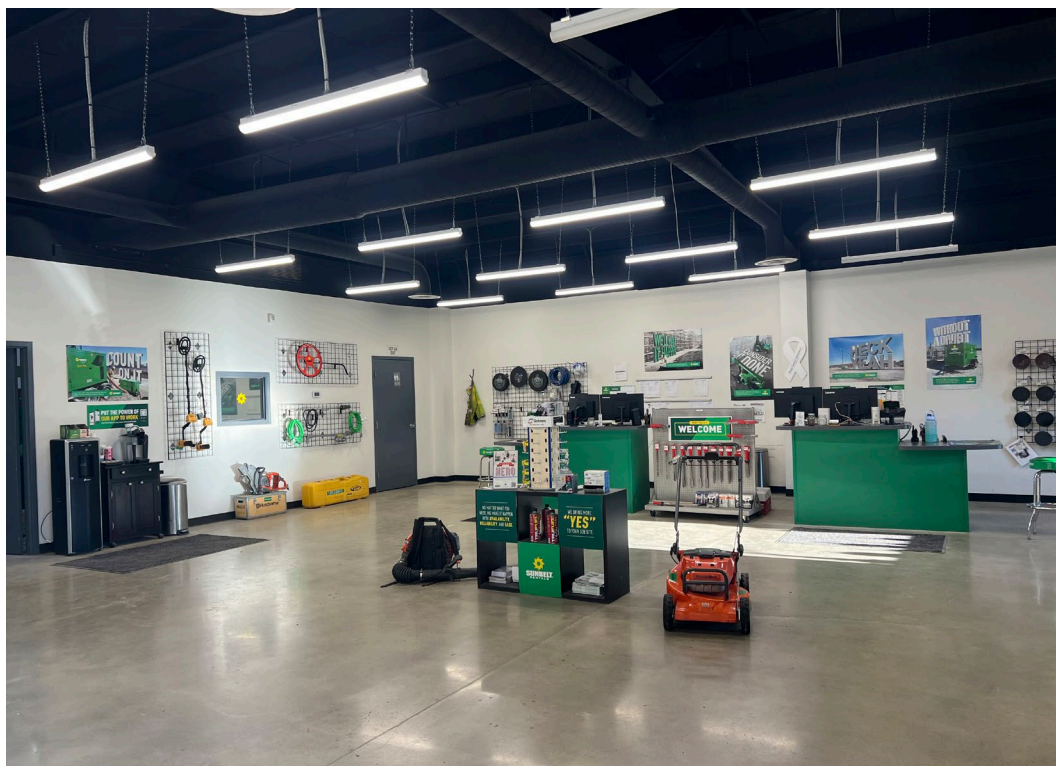
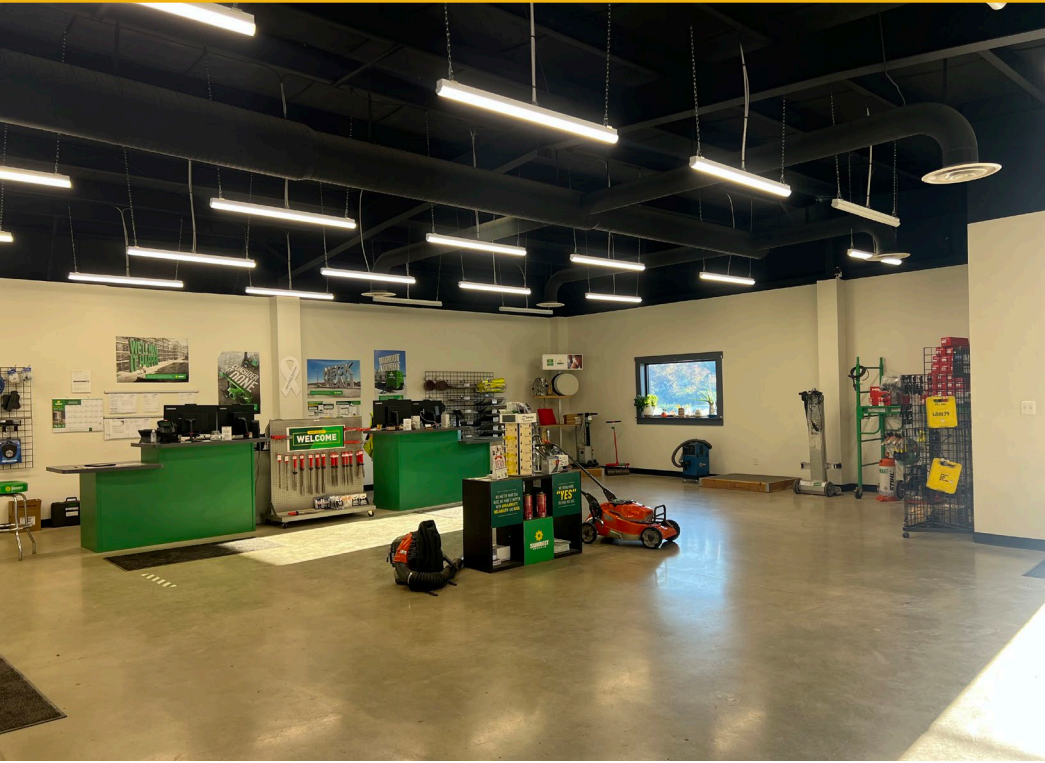
AERIAL



-  DRIVE-IN
-  DOCK
-  WASH PIT



ADDITIONAL PHOTOS



LOCAL BIRDSEYE



GREEN BAY PACKAGING
SMART PARTNERS... SMARTER SOLUTIONS

McCormick

83

MCCORMICK RD

BEAVER DAM RD

STERILEX

BEAVER DAM RD

SITE

tessco

McCormick

HUNT VALLEY TOWNE CENTER

ROUGE FINE CATERING

McCormick

McCormick

Brawner BUILDERS

tessco

FERGUSON Bath, Kitchen & Lighting Gallery

WITTENBACH

HIGH'S



TRADE AREA

DRIVING DISTANCE TO:

45 1.0 MILES
3 MIN. DRIVE

83 1.9 MILES
5 MIN. DRIVE

695 5.7 MILES
8 MIN. DRIVE

PORT OF BALTIMORE
24.3 MILES
26 MIN. DRIVE
(SEAGIRT MARINE TERMINAL)

BWI
BALTIMORE/WASHINGTON INTERNATIONAL AIRPORT
28.3 MILES
27 MIN. DRIVE

BALTIMORE, MD 17.2 MILES
18 MIN.

WASHINGTON, DC 57.3 MILES
1 HR. 10 MIN.

PHILADELPHIA, PA 108.0 MILES
1 HR. 40 MIN.

RICHMOND, VA 167.0 MILES
3 HRS. 0 MIN.



FOR MORE INFO **CONTACT:**



KETCH SECOR
SENIOR VICE PRESIDENT

410.409.0990
KSECOR@mackenziecommercial.com



GRAHAM SEVY
SENIOR REAL ESTATE ADVISOR

410.830.1399
GSEVY@mackenziecommercial.com



MACKENZIE
COMMERCIAL REAL ESTATE SERVICES, LLC

443-573-3200
111 S. Calvert Street
Baltimore, MD 21202

OFFICES IN: ANNAPOLIS, MD **BALTIMORE, MD** BEL AIR, MD COLUMBIA, MD LUTHERVILLE, MD CHARLOTTESVILLE, VA

www.MACKENZIECOMMERCIAL.com



VISIT **PROPERTY PAGE** FOR MORE INFORMATION.

No warranty or representation, expressed or implied, is made as to the accuracy of the information contained herein, and same is submitted subject to errors, omissions, change of price, rental or other conditions, withdrawal without notice, and to any specific listing conditions imposed by our principals.