

FOR SALE

HEMET, CALIFORNIA

Southwest Corner of Stetson & Cawston Avenues

Excellent Development Opportunity



- Approximately 18.21 acres gross
- Signalized intersection at Stetson Avenue & Cawston Avenue
- Located in strong, emerging southwest commercial area
- APN 460-020-007 & 008
- Zoning: Commercial-development potential - To be verified by City of Hemet
- Near Wal-Mart Supercenter, Walgreens, Bed Bath & Beyond, new medical center, airport, others

ASKING PRICE \$7,500,000

FOR ADDITIONAL INFORMATION CONTACT

Guy W. Excell or Howard B. Rosenthal

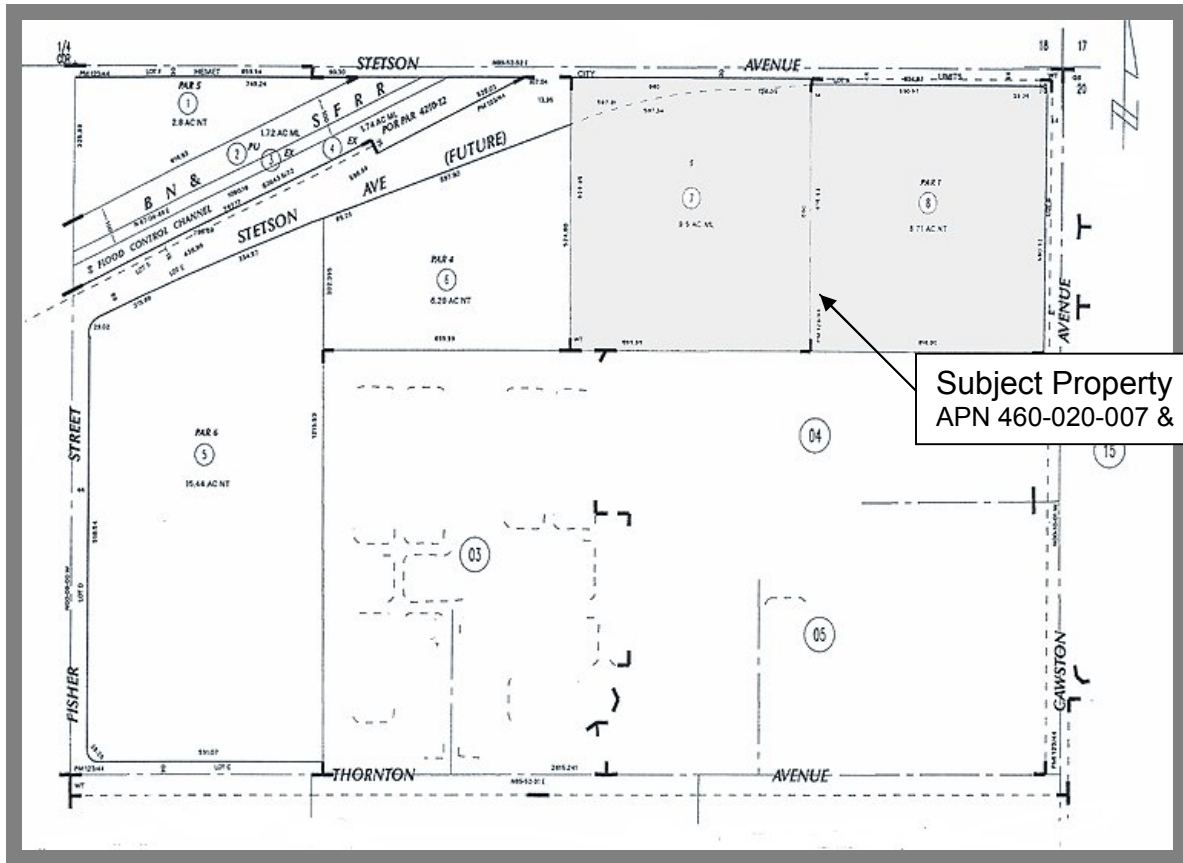
(951) 658-2559

DRE License No. 01138381



Rosenthal & Excell
Commercial Real Estate Services

1600 East Florida Avenue, Suite 110
Hemet, California 92544
(951) 658-2559 • Fax: (951) 658-7690
email: hrge@rosenthalexcell.com



Subject Property
APN 460-020-007 & 008

FOR ADDITIONAL INFORMATION CONTACT
Guy W. Excell or Howard B. Rosenthal
(951) 658-2559

DRE License No. 01138381



Rosenthal & Excell
Commercial Real Estate Services

1600 East Florida Avenue, Suite 110
Hemet, California 92544
(951) 658-2559 • Fax: (951) 658-7690
email: hrg@rosenthalexcell.com