

EXCLUSIVE  
**FOR LEASE**  
WITH BUILD TO SUIT OPTION

## BROOKFIELD OFFICE SPACE

19105 W CAPITOL DRIVE  
BROOKFIELD, WI 53045



PRICE	2nd Floor: \$18 - \$20/SF Net
	Lower Level: \$10/SF Gross
BUILDING SIZE	15,000 SF 5,150 SF (2nd Floor) 4,700 SF (Lower Level)
PARKING	Surface
YEAR BUILT	2006



DEMOGRAPHICS	1 MILE	3 MILE	5 MILE
POPULATION	3,557	37,133	98,109
AVG HH INCOME	\$166,965	\$170,071	\$144,073

**MARATHON**  
PROPERTY HOLDINGS, LLC

**FOR MORE INFORMATION  
CONTACT:**

Michelle Knopf  
715-803-2901  
mknopf@marathonpropertyholdings.com

### PROPERTY FEATURES

- Stand-alone building with Marathon Bank on the first floor located at Sendik's Towne Center with multiple retail and dining amenities
- New on-site ownership
- Available spaces ideal for office, medical, financial or law firm users
- Facade signage available with high visibility to Capitol Drive
- Only minutes away from I-41 and I-94 freeway access
- Surface parking available

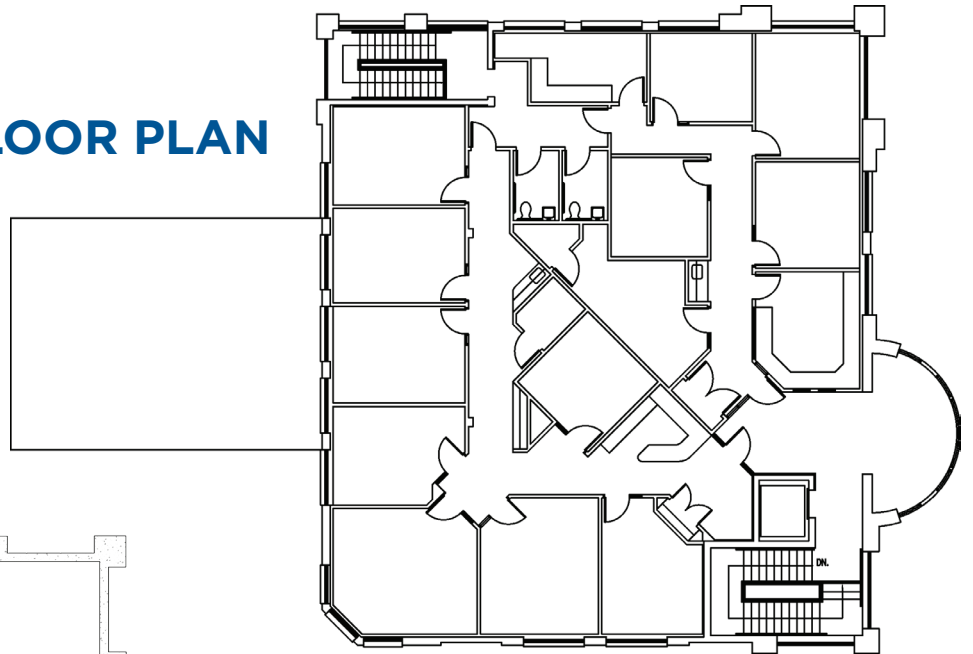
**EXCLUSIVE  
FOR LEASE**

## **BROOKFIELD OFFICE SPACE**

19105 W CAPITOL DRIVE  
BROOKFIELD, WI 53045

### **SECOND FLOOR PLAN**

5,150 Square Feet



### **LOWER LEVEL FLOOR PLAN**

4,700 Square Feet

**MARATHON**  
PROPERTY HOLDINGS, LLC

**FOR MORE INFORMATION CONTACT:**

**Michelle Knopf**

**715-803-2901**

[mknopf@marathonpropertyholdings.com](mailto:mknopf@marathonpropertyholdings.com)