

# Amazing Development Opportunity

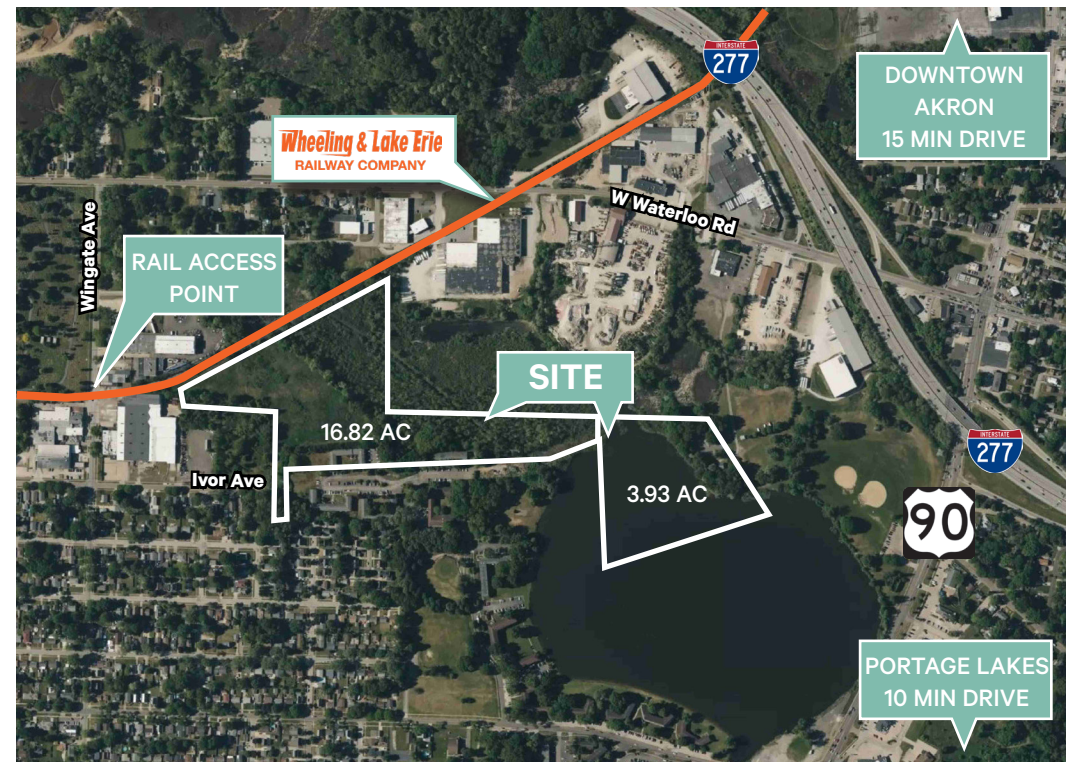
20.75 Acre Property in Akron Ohio

875 Ivor Avenue  
Akron | Ohio | 44314

## Property Highlights

- + **County:** Summit
- + **Parcels:** Two
- + **Zoning:** U-5
- + Rail Access Potential
- + **Flood Zone:** The eastern-most acreage is in FEMA flood zone AE and appears as wetlands on the Summit County GIS website, though no official wetland delineation has been performed.
- + **Travel:** Excellent Highway access
  - State Route 93: 0.9 Miles (3 Minutes)
  - Interstate 76: 2.9 Miles (6 Minutes)
  - Interstate 277 : 3.8 Miles (9 Minutes)
  - Interstate 71: 29 Miles (35 Minutes)
  - Cleveland Hopkins Air Port: 42 Miles (46 Minutes)
  - Cleveland: 46.7 Miles (46 Minutes)

Newly Reduced Price: \$99,900



## 20.75 Acre Property

875 Ivor Avenue | Akron, Ohio 44314

For Sale



Parcel	Acres	Zoning
67-41011	16.82	U-5 (Commercial)
68-54413	3.93	R (Residential)
<b>Combined</b>	<b>20.75</b>	

## Contact Us

### Steve Lazarides

First Vice President  
+1 330 670 4410  
steve.lazarides@cbre.com

### CBRE, Inc.

3421 Ridgewood Rd, Suite 150  
Akron, Ohio 44333  
www.cbre.us

© 2026 CBRE, Inc. All rights reserved. This information has been obtained from sources believed reliable, but has not been verified for accuracy or completeness. You should conduct a careful, independent investigation of the property and verify all information. Any reliance on this information is solely at your own risk. CBRE and the CBRE logo are service marks of CBRE, Inc. All other marks displayed on this document are the property of their respective owners, and the use of such logos does not imply any affiliation with or endorsement of CBRE. Photos herein are the property of their respective owners. Use of these images without the express written consent of the owner is prohibited. Licensed Real Estate Broker.

