

Available
FOR LEASE

THE BRONA

62 MAIN ST, BLOOMINGDALE, NEW JERSEY

2019
YEAR BUILT

±2,820 SF
AVAILABLE FOR LEASE

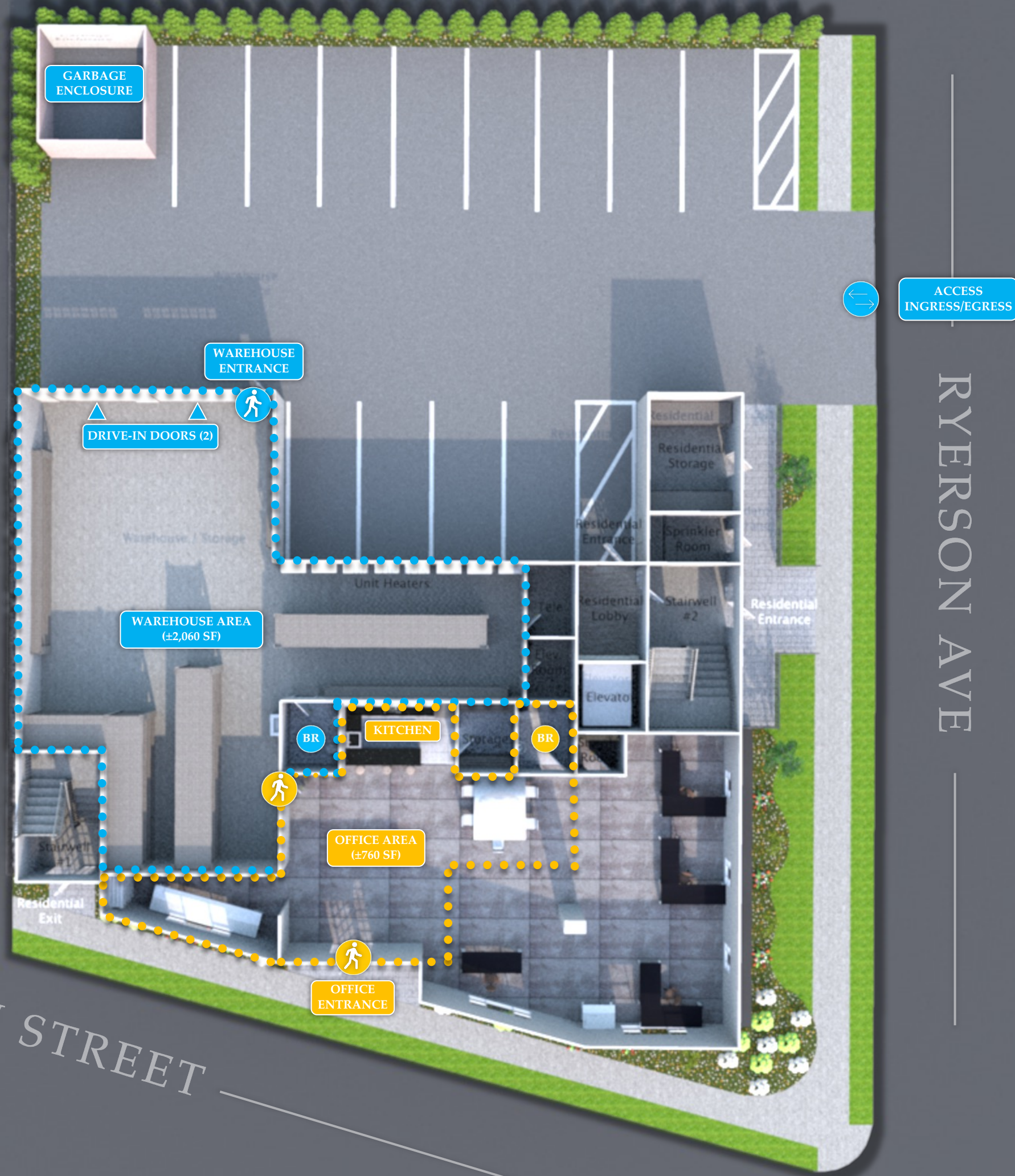
12 FT
CLEAR HEIGHT

Two (10' x 10')
DRIVE-IN DOORS

Route 23 & I-287
IMMEDIATE ACCESS

Site PLAN

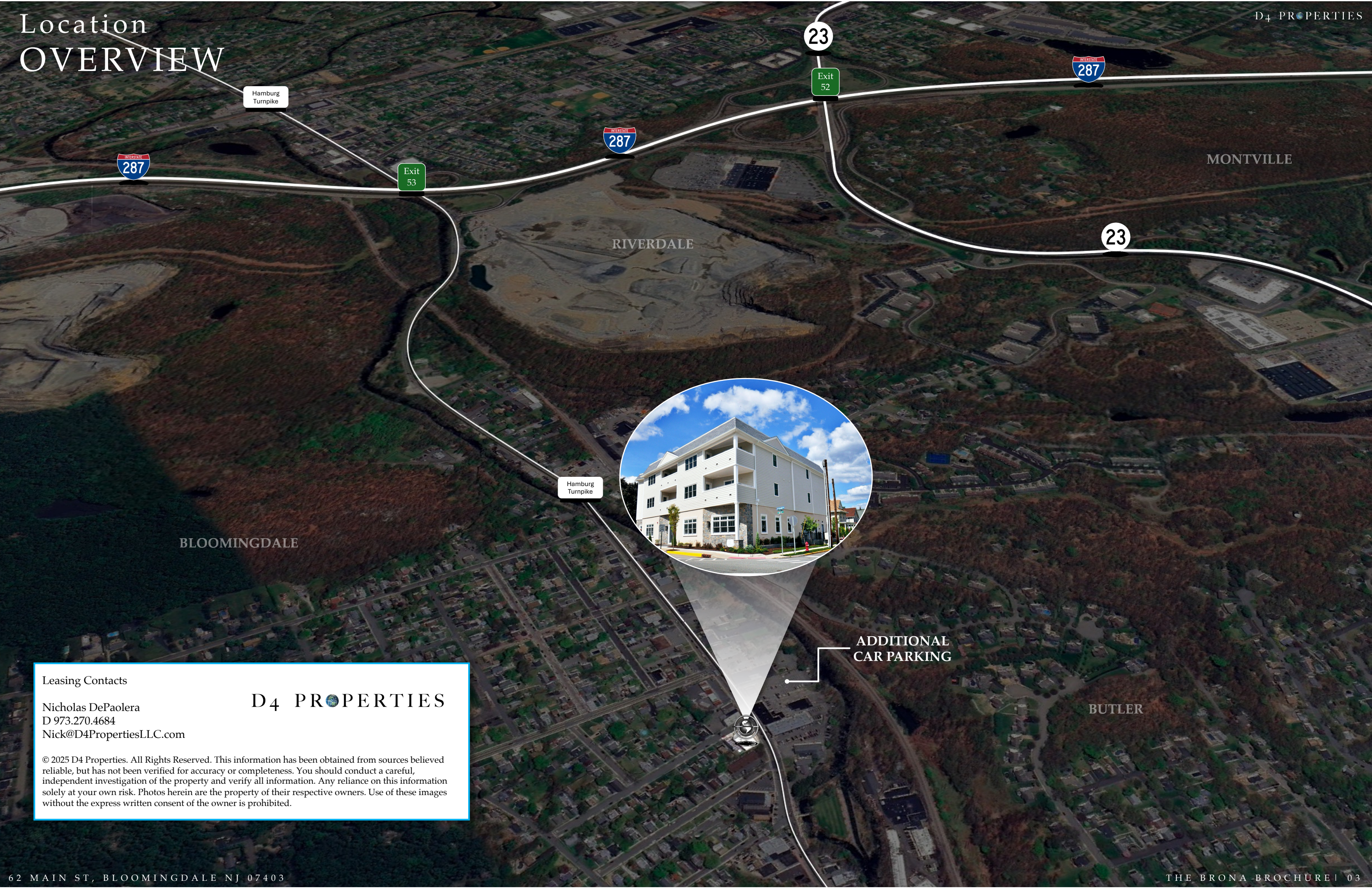
AVAILABILITY	11/01/2025
TOTAL SF AVAILABLE	±2,820 SF
WAREHOUSE SF	±2,060 SF
OFFICE SF (OPTIONAL)	±760 SF
CEILING HEIGHT	12'
DRIVE-INS	TWO (10' x 10')
SPRINKLERS	WET
LIGHTING	LED
PARKING	STREET + REMOTE
ACCESS	1.0 MILE TO INTERSTATE 287 1.6 MILES TO ROUTE 23
LEASE RATE	\$4,000/MO GROSS \$5,500/MO GROSS (INCL. OFFICE)
FEATURES	WAREHOUSE BR OFFICE BR PRIVATE OFFICE CONFERENCE TABLE KITCHEN KEY FOB ACCESS SECURITY CAMERAS



MAIN STREET

RYERSON AVE

Location OVERVIEW



ADDITIONAL CAR PARKING

Leasing Contacts
Nicholas DePaolera
D 973.270.4684
Nick@D4PropertiesLLC.com

D4 PROPERTIES

© 2025 D4 Properties. All Rights Reserved. This information has been obtained from sources believed reliable, but has not been verified for accuracy or completeness. You should conduct a careful, independent investigation of the property and verify all information. Any reliance on this information solely at your own risk. Photos herein are the property of their respective owners. Use of these images without the express written consent of the owner is prohibited.