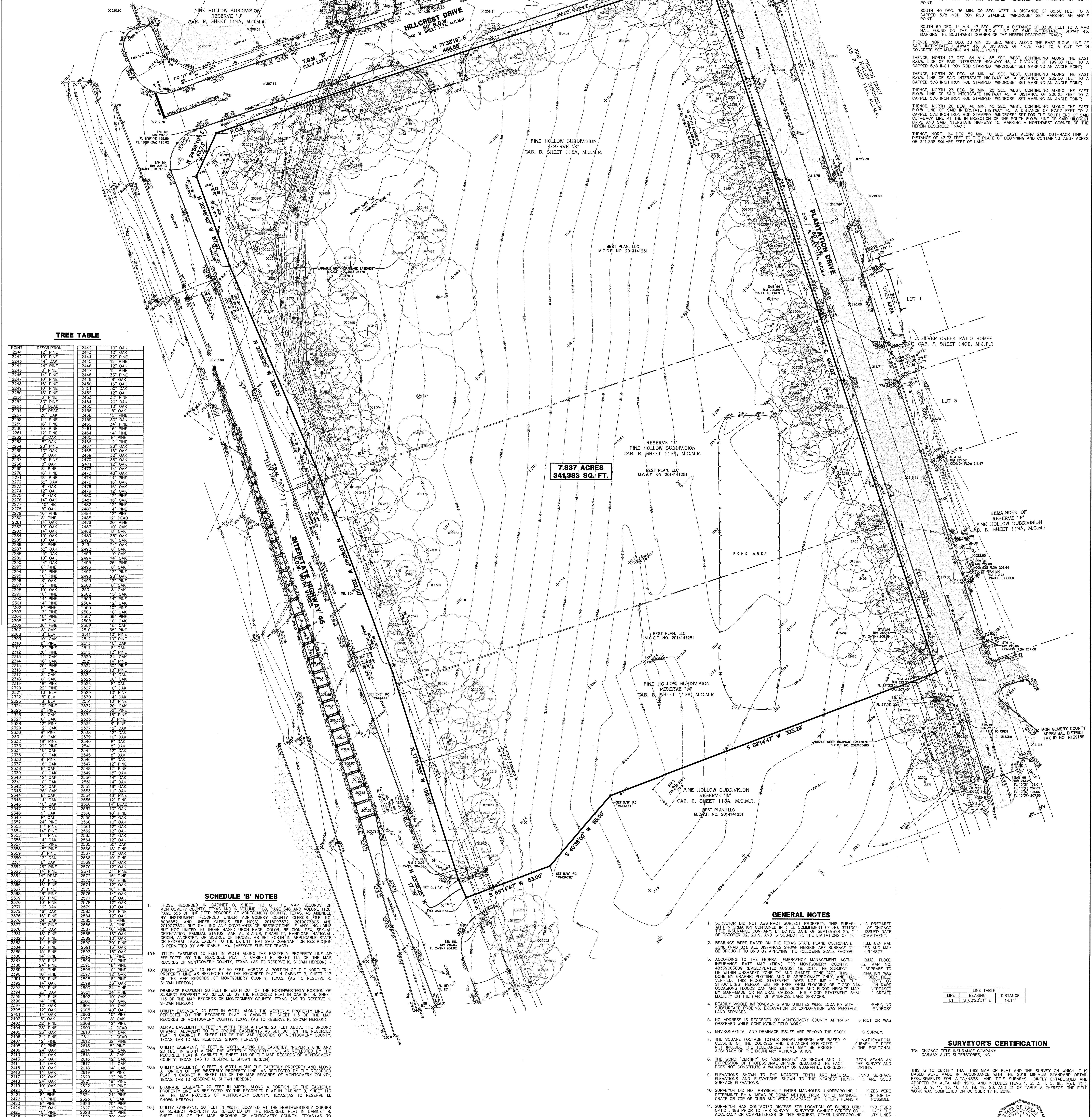


CITY OF CONROE, MONTGOMERY COUNTY, TEXAS  
VICINITY MAP  
SCALE: 1" = 2,000'



**TREE TABLE**

POINT	DESCRIPTION	2442	10" OAK
2442	10" PINE	2442	10" OAK
2443	10" PINE	2443	10" OAK
2444	10" PINE	2444	10" OAK
2445	10" PINE	2445	10" OAK
2446	10" PINE	2446	10" OAK
2447	10" PINE	2447	10" OAK
2448	10" PINE	2448	10" OAK
2449	10" PINE	2449	10" OAK
2450	10" PINE	2450	10" OAK
2451	10" PINE	2451	10" OAK
2452	10" PINE	2452	10" OAK
2453	10" PINE	2453	10" OAK
2454	10" PINE	2454	10" OAK
2455	10" PINE	2455	10" OAK
2456	10" PINE	2456	10" OAK
2457	10" PINE	2457	10" OAK
2458	10" PINE	2458	10" OAK
2459	10" PINE	2459	10" OAK
2460	10" PINE	2460	10" OAK
2461	10" PINE	2461	10" OAK
2462	10" PINE	2462	10" OAK
2463	10" PINE	2463	10" OAK
2464	10" PINE	2464	10" OAK
2465	10" PINE	2465	10" OAK
2466	10" PINE	2466	10" OAK
2467	10" PINE	2467	10" OAK
2468	10" PINE	2468	10" OAK
2469	10" PINE	2469	10" OAK
2470	10" PINE	2470	10" OAK
2471	10" PINE	2471	10" OAK
2472	10" PINE	2472	10" OAK
2473	10" PINE	2473	10" OAK
2474	10" PINE	2474	10" OAK
2475	10" PINE	2475	10" OAK
2476	10" PINE	2476	10" OAK
2477	10" PINE	2477	10" OAK
2478	10" PINE	2478	10" OAK
2479	10" PINE	2479	10" OAK
2480	10" PINE	2480	10" OAK
2481	10" PINE	2481	10" OAK
2482	10" PINE	2482	10" OAK
2483	10" PINE	2483	10" OAK
2484	10" PINE	2484	10" OAK
2485	10" PINE	2485	10" OAK
2486	10" PINE	2486	10" OAK
2487	10" PINE	2487	10" OAK
2488	10" PINE	2488	10" OAK
2489	10" PINE	2489	10" OAK
2490	10" PINE	2490	10" OAK
2491	10" PINE	2491	10" OAK
2492	10" PINE	2492	10" OAK
2493	10" PINE	2493	10" OAK
2494	10" PINE	2494	10" OAK
2495	10" PINE	2495	10" OAK
2496	10" PINE	2496	10" OAK
2497	10" PINE	2497	10" OAK
2498	10" PINE	2498	10" OAK
2499	10" PINE	2499	10" OAK
2500	10" PINE	2500	10" OAK
2501	10" PINE	2501	10" OAK
2502	10" PINE	2502	10" OAK
2503	10" PINE	2503	10" OAK
2504	10" PINE	2504	10" OAK
2505	10" PINE	2505	10" OAK
2506	10" PINE	2506	10" OAK
2507	10" PINE	2507	10" OAK
2508	10" PINE	2508	10" OAK
2509	10" PINE	2509	10" OAK
2510	10" PINE	2510	10" OAK
2511	10" PINE	2511	10" OAK
2512	10" PINE	2512	10" OAK
2513	10" PINE	2513	10" OAK
2514	10" PINE	2514	10" OAK
2515	10" PINE	2515	10" OAK
2516	10" PINE	2516	10" OAK
2517	10" PINE	2517	10" OAK
2518	10" PINE	2518	10" OAK
2519	10" PINE	2519	10" OAK
2520	10" PINE	2520	10" OAK
2521	10" PINE	2521	10" OAK
2522	10" PINE	2522	10" OAK
2523	10" PINE	2523	10" OAK
2524	10" PINE	2524	10" OAK
2525	10" PINE	2525	10" OAK
2526	10" PINE	2526	10" OAK
2527	10" PINE	2527	10" OAK
2528	10" PINE	2528	10" OAK
2529	10" PINE	2529	10" OAK
2530	10" PINE	2530	10" OAK
2531	10" PINE	2531	10" OAK
2532	10" PINE	2532	10" OAK
2533	10" PINE	2533	10" OAK
2534	10" PINE	2534	10" OAK
2535	10" PINE	2535	10" OAK
2536	10" PINE	2536	10" OAK
2537	10" PINE	2537	10" OAK
2538	10" PINE	2538	10" OAK
2539	10" PINE	2539	10" OAK
2540	10" PINE	2540	10" OAK
2541	10" PINE	2541	10" OAK
2542	10" PINE	2542	10" OAK
2543	10" PINE	2543	10" OAK
2544	10" PINE	2544	10" OAK
2545	10" PINE	2545	10" OAK
2546	10" PINE	2546	10" OAK
2547	10" PINE	2547	10" OAK
2548	10" PINE	2548	10" OAK
2549	10" PINE	2549	10" OAK
2550	10" PINE	2550	10" OAK
2551	10" PINE	2551	10" OAK
2552	10" PINE	2552	10" OAK
2553	10" PINE	2553	10" OAK
2554	10" PINE	2554	10" OAK
2555	10" PINE	2555	10" OAK
2556	10" PINE	2556	10" OAK
2557	10" PINE	2557	10" OAK
2558	10" PINE	2558	10" OAK
2559	10" PINE	2559	10" OAK
2560	10" PINE	2560	10" OAK
2561	10" PINE	2561	10" OAK
2562	10" PINE	2562	10" OAK
2563	10" PINE	2563	10" OAK
2564	10" PINE	2564	10" OAK
2565	10" PINE	2565	10" OAK
2566	10" PINE	2566	10" OAK
2567	10" PINE	2567	10" OAK
2568	10" PINE	2568	10" OAK
2569	10" PINE	2569	10" OAK
2570	10" PINE	2570	10" OAK
2571	10" PINE	2571	10" OAK
2572	10" PINE	2572	10" OAK
2573	10" PINE	2573	10" OAK
2574	10" PINE	2574	10" OAK
2575	10" PINE	2575	10" OAK
2576	10" PINE	2576	10" OAK
2577	10" PINE	2577	10" OAK
2578	10" PINE	2578	10" OAK
2579	10" PINE	2579	10" OAK
2580	10" PINE	2580	10" OAK
2581	10" PINE	2581	10" OAK
2582	10" PINE	2582	10" OAK
2583	10" PINE	2583	10" OAK
2584	10" PINE	2584	10" OAK
2585	10" PINE	2585	10" OAK
2586	10" PINE	2586	10" OAK
2587	10" PINE	2587	10" OAK
2588	10" PINE	2588	10" OAK
2589	10" PINE	2589	10" OAK
2590	10" PINE	2590	10" OAK
2591	10" PINE	2591	10" OAK
2592	10" PINE	2592	10" OAK
2593	10" PINE	2593	10" OAK
2594	10" PINE	2594	10" OAK
2595	10" PINE	2595	10" OAK
2596	10" PINE	2596	10" OAK
2597	10" PINE	2597	10" OAK
2598	10" PINE	2598	10" OAK
2599	10" PINE	2599	10" OAK
2600	10" PINE	2600	10" OAK
2601	10" PINE	2601	10" OAK
2602	10" PINE	2602	10" OAK
2603	10" PINE	2603	10" OAK
2604	10" PINE	2604	10" OAK
2605	10" PINE	2605	10" OAK
2606	10" PINE	2606	10" OAK
2607	10" PINE	2607	10" OAK
2608	10" PINE	2608	10" OAK
2609	10" PINE	2609	10" OAK
2610	10" PINE	2610	10" OAK
2611	10" PINE	2611	10" OAK
2612	10" PINE	2612	10" OAK
2613	10" PINE	2613	10" OAK
2614	10" PINE	2614	10" OAK
2615	10" PINE	2615	10" OAK
2616	10" PINE	2616	10" OAK
2617	10" PINE	2617	10" OAK
2618	10" PINE	2618	10" OAK
2619	10" PINE	2619	10" OAK
2620	10" PINE	2620	10" OAK
2621	10" PINE	2621	10" OAK
2622	10" PINE	2622	10" OAK
2623	10" PINE	2623	10" OAK
2624	10" PINE	2624	10" OAK
2625	10" PINE	2625	10" OAK
2626	10" PINE	2626	10" OAK
2627	10" PINE	2627	10" OAK
2628	10" PINE	2628	10" OAK
2629	10" PINE	2629	10" OAK
2630	10" PINE	2630	10" OAK
2631	10" PINE	2631	10" OAK
2632	10" PINE	2632	10" OAK
2633	10" PINE	2633	10" OAK
2634	10" PINE	2634	10" OAK
2635	10" PINE	2635	10" OAK
2636	10" PINE	2636	10" OAK
2637	10" PINE	2637	10" OAK
2638	10" PINE	2638	10" OAK
2639	10" PINE	2639	10" OAK
2640	10" PINE	2640	10" OAK
2641	10" PINE	2641	10" OAK
2642	10" PINE	2642	10" OAK
2643	10" PINE	2643	10" OAK
2644	10" PINE	2644	10" OAK
2645	10" PINE	2645	10" OAK
2646	10" PINE	2646	10" OAK
2647	10" PINE	2647	10" OAK
2648	10" PINE	2648	10" OAK
2649	10" PINE	2649	10" OAK
2650	10" PINE	2650	10" OAK
2651	10" PINE	2651	10" OAK
2652	10" PINE	2652	10" OAK
2653	10" PINE	2653	10" OAK
2654	10" PINE	2654	10" OAK
2655	10" PINE	2655	10" OAK
2656	10" PINE	2656	10" OAK
2657	10" PINE	2657	10" OAK
2658	10" PINE	2658	10" OAK
2659	10" PINE	2659	10" OAK
2660	10" PINE	2660	10" OAK
2661	10" PINE	2661	10" OAK
2662	10" PINE	2662	10" OAK
2663	10" PINE	2663	10" OAK
2664	10" PINE	2664	10" OAK
2665	10" PINE	2665	10" OAK
2666	10" PINE	2666	10" OAK
2667	10" PINE	2667	10" OAK
2668	10" PINE	2668	10" OAK
2669	10" PINE	2669	10" OAK
2670	10" PINE	2670	10" OAK
2671	10" PINE	2671	10" OAK
2672	10" PINE	2672	10" OAK
2673	10" PINE	2673	10" OAK
2674	10" PINE	2674	10" OAK
2675	10" PINE	2675	10" OAK
2676	10" PINE	2676	10" OAK
2677	10" PINE	2677	10" OAK
2678	10" PINE	2678	10" OAK
2679	10" PINE	2679	10" OAK
2680	10" PINE	2680	10" OAK
2681	10" PINE	2681	10" OAK
2682	10" PINE	2682	10" OAK
2683	10" PINE	2683	10" OAK
2684	10" PINE	2684	10" OAK
2685	10" PINE	2685	10" OAK
2686	10" PINE	2686	10" OAK
2687	10" PINE	2687	10" OAK
2688	10" PINE	2688	10" OAK
2689	10" PINE	2689	10" OAK
2690	10" PINE	2690	10" OAK
2691	10" PINE	2691	10" OAK
2692	10" PINE	2692	10" OAK
2693	10" PINE	2693	10" OAK
2694	10" PINE	2694	10" OAK
2695	10" PINE	2695	10" OAK
2696	10" PINE	2696	10" OAK
2697	10" PINE	2697	10" OAK
2698	10" PINE	2698	10" OAK
2699	10" PINE	2699	10" OAK
2700	10" PINE	2700	10" OAK

**SCHEDULE 'B' NOTES**

- 1. THOSE RECORDED IN CABINET B, SHEET 113 OF THE MAP RECORDS OF MONTGOMERY COUNTY, TEXAS AND IN VOLUME 1108, PAGE 646 AND VOLUME 1126, PAGE 656 OF THE DEED RECORDS OF MONTGOMERY COUNTY, TEXAS AS AMENDED BY INSTRUMENT RECORDED UNDER MONTGOMERY COUNTY CLERK'S FILE NO. 201907384 BUT OMITTING ANY COVENANTS OR RESTRICTIONS, IF ANY, INCLUDING BUT NOT LIMITED TO THOSE BASED UPON RACE, COLOR, RELIGION, SEX, SOCIAL ORIENTATION, FAMILIAL STATUS, MARITAL STATUS, DISABILITY, HANDICAP, NATIONAL ORIGIN, ANCESTRY, OR SOURCE OF INCOME, AS SET FORTH IN APPLICABLE STATE OR FEDERAL LAWS, EXCEPT TO THE EXTENT THAT SAID COVENANT OR RESTRICTION IS PERMITTED BY APPLICABLE LAW. (AFFECTS SUBJECT TRACT)
- 10A. UTILITY EASEMENT 10 FEET IN WIDTH ALONG THE EASTERLY PROPERTY LINE AS REFLECTED BY THE RECORDED PLAT IN CABINET B, SHEET 113 OF THE MAP RECORDS OF MONTGOMERY COUNTY, TEXAS. (AS TO RESERVE K, SHOWN HEREON)
- 10B. UTILITY EASEMENT 10 FEET IN WIDTH ALONG THE WESTERLY PROPERTY LINE AS REFLECTED BY THE RECORDED PLAT IN CABINET B, SHEET 113 OF THE MAP RECORDS OF MONTGOMERY COUNTY, TEXAS. (AS TO RESERVE K, SHOWN HEREON)
- 10C. UTILITY EASEMENT 10 FEET IN WIDTH ALONG THE EASTERLY PROPERTY LINE AND 20 FEET IN WIDTH ALONG THE WESTERLY PROPERTY LINE, AS REFLECTED BY THE RECORDED PLAT IN CABINET B, SHEET 113 OF THE MAP RECORDS OF MONTGOMERY COUNTY, TEXAS. (AS TO RESERVE K, SHOWN HEREON)
- 10D. UTILITY EASEMENT 10 FEET IN WIDTH ALONG THE EASTERLY PROPERTY LINE AND 20 FEET IN WIDTH ALONG THE WESTERLY PROPERTY LINE, AS REFLECTED BY THE RECORDED PLAT IN CABINET B, SHEET 113 OF THE MAP RECORDS OF MONTGOMERY COUNTY, TEXAS. (AS TO RESERVE M, SHOWN HEREON)
- 10E. UTILITY EASEMENT 10 FEET IN WIDTH ALONG THE EASTERLY PROPERTY LINE AND 20 FEET IN WIDTH ALONG THE WESTERLY PROPERTY LINE, AS REFLECTED BY THE RECORDED PLAT IN CABINET B, SHEET 113 OF THE MAP RECORDS OF MONTGOMERY COUNTY, TEXAS. (AS TO RESERVE M, SHOWN HEREON)
- 10F. UTILITY EASEMENT 10 FEET IN WIDTH ALONG THE EASTERLY PROPERTY LINE AND 20 FEET IN WIDTH ALONG THE WESTERLY PROPERTY LINE, AS REFLECTED BY THE RECORDED PLAT IN CABINET B, SHEET 113 OF THE MAP RECORDS OF MONTGOMERY COUNTY, TEXAS. (AS TO RESERVE M, SHOWN HEREON)
- 10G. UTILITY EASEMENT 10 FEET IN WIDTH ALONG THE EASTERLY PROPERTY LINE AND 20 FEET IN WIDTH ALONG THE WESTERLY PROPERTY LINE, AS REFLECTED BY THE RECORDED PLAT IN CABINET B, SHEET 113 OF THE MAP RECORDS OF MONTGOMERY COUNTY, TEXAS. (AS TO RESERVE M, SHOWN HEREON)
- 10H. UTILITY EASEMENT 10 FEET IN WIDTH ALONG THE EASTERLY PROPERTY LINE AND 20 FEET IN WIDTH ALONG THE WESTERLY PROPERTY LINE, AS REFLECTED BY THE RECORDED PLAT IN CABINET B, SHEET 113 OF THE MAP RECORDS OF MONTGOMERY COUNTY, TEXAS. (AS TO RESERVE M, SHOWN HEREON)
- 10I. UTILITY EASEMENT 10 FEET IN WIDTH ALONG THE EASTERLY PROPERTY LINE AND 20 FEET IN WIDTH ALONG THE WESTERLY PROPERTY LINE, AS REFLECTED BY THE RECORDED PLAT IN CABINET B, SHEET 113 OF THE MAP RECORDS OF MONTGOMERY COUNTY, TEXAS. (AS TO RESERVE