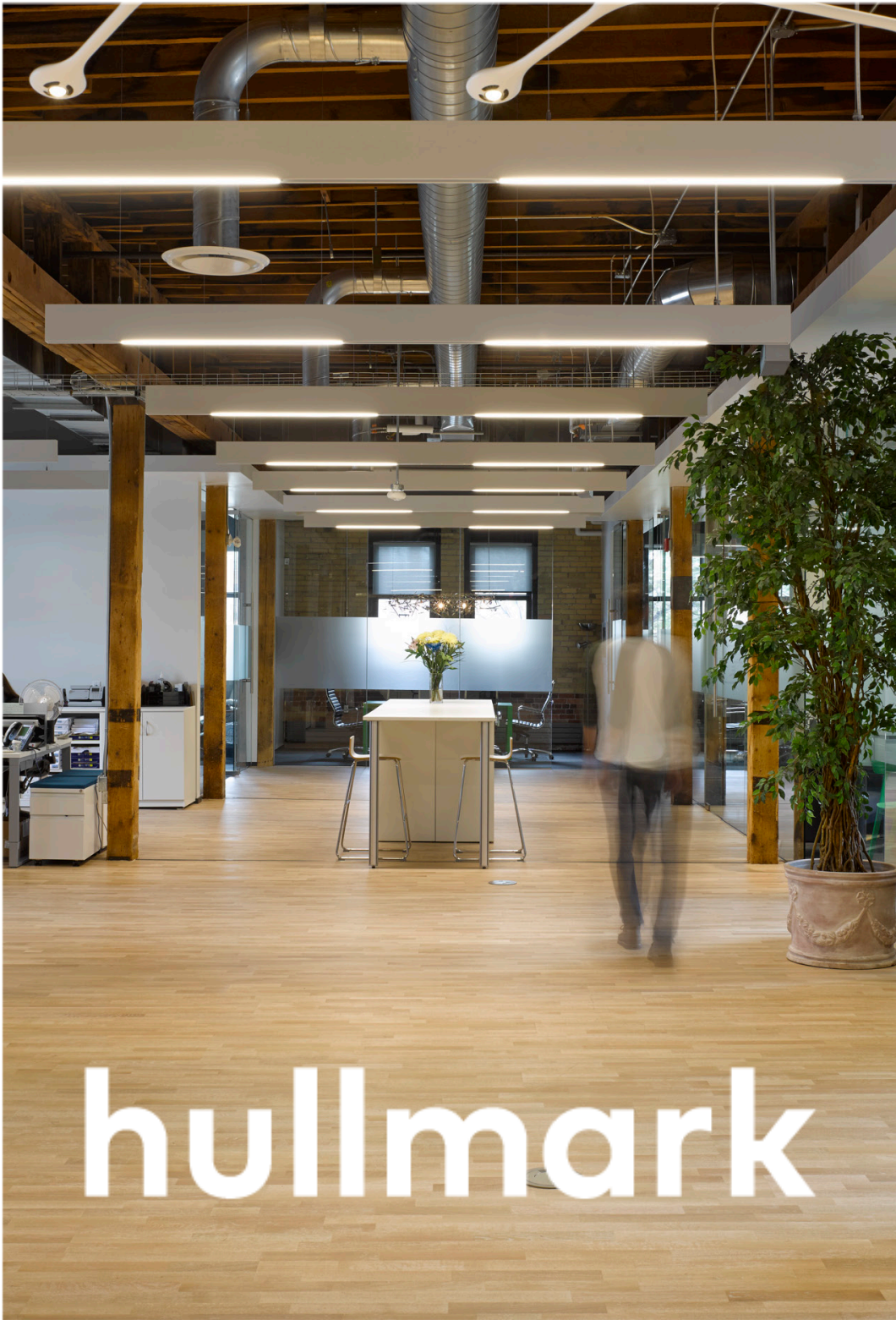


Office  
For Lease

60\_80 Atlantic  
Toronto, Ontario



hullmark



## Building Summary

---

**We are a real estate investment and development team that is committed to shaping a vibrant and transforming urban Toronto.**



60\_80 Atlantic is a best-in-class mixed-use complex ideally located in the heart of Liberty village – a thriving community of innovative and creative companies, restaurants, and retailers. 60\_80 Atlantic is steps to the TTC streetcar, a 5-minute walk to the Exhibition GO, and a short distance to the Gardiner Expressway. Originally built in 1989 as a wine warehouse, 60 Atlantic has been re-purposed as a three-storey commercial building and urban catalyst for area growth. 60 Atlantic combines traditional architectural elements with modern office features, ideal for tenants looking for both a creative and independent space.



## Highlights

---

- Limited upfront capital needed; high-quality space with efficient mix of open areas, meeting rooms, and conference spaces, as well as kitchen area and private terrace access
- Excellent creative and technology-based co-tenancies in the immediate area including Universal Music, Sony Music, and Instacart
- Nearby amenities and stores offering a wide array of convenience- and service-based retail options
- Complex offers access to underground parking, end-of-trip shower facilities, and bike lockers
- Branding activation opportunities available through building signage and access to lobby and patio event space
- 5-minute walk to TTC streetcar, the Exhibition GO station, Gardiner Expressway/Lakeshore Boulevard, and close to future OLT and smart track station

## Offerings

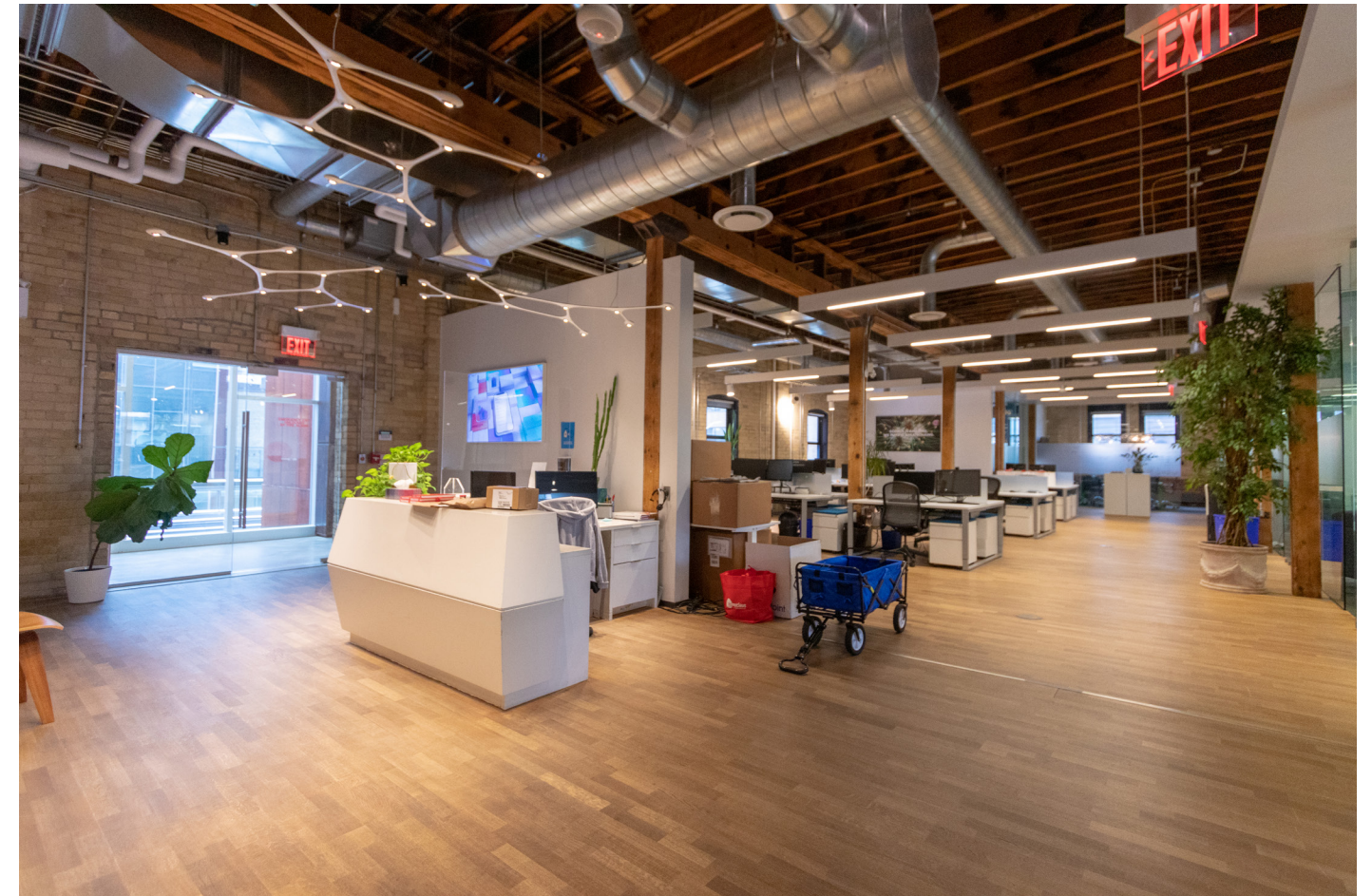
---

Size: 14,500 SF (demisable)

Available: February 1, 2024

Net Rent: Contact Listing Team

Additional Rent: \$17.50

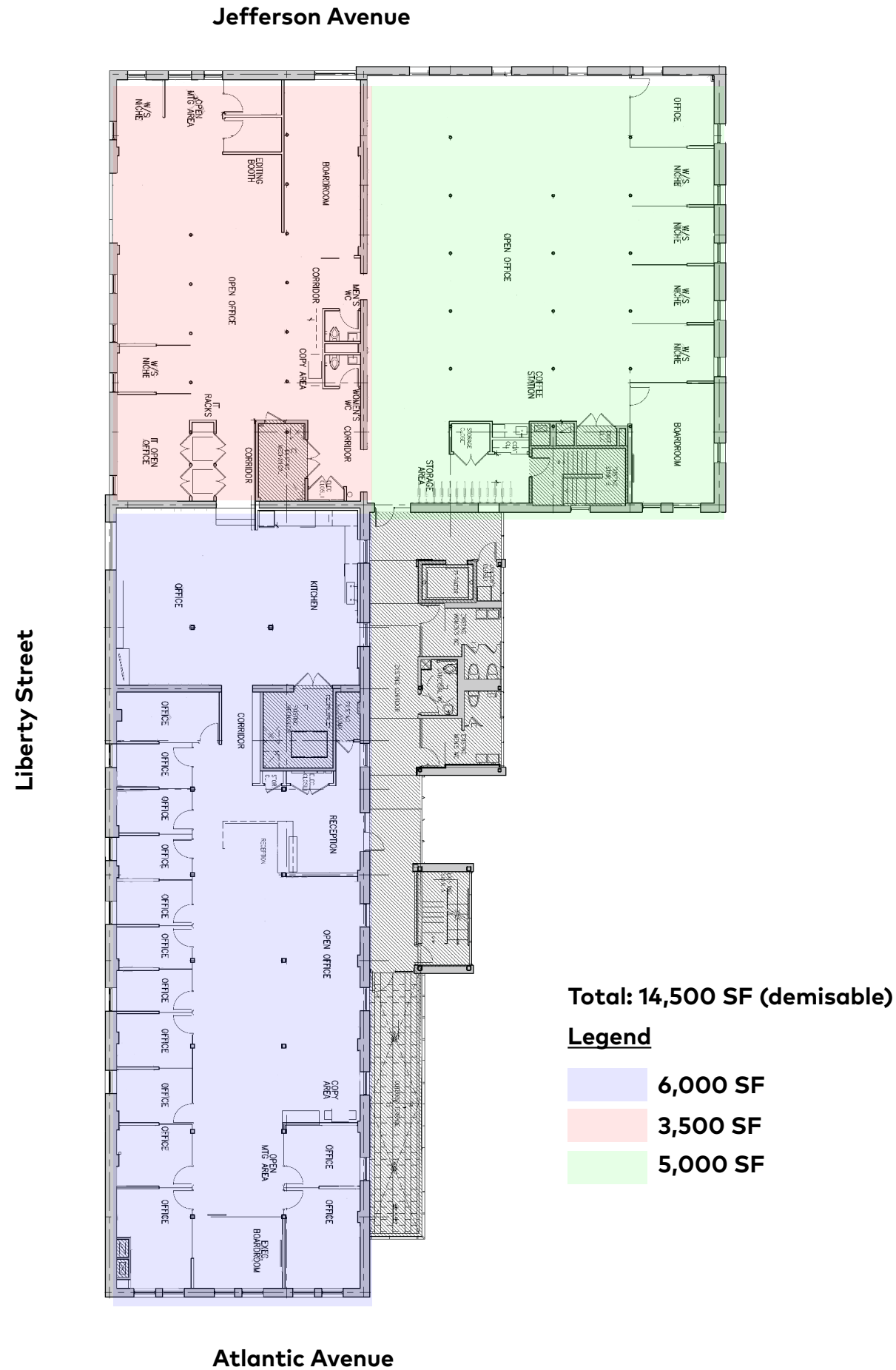








# Floor Plan



# Amenity Map





**Neighbourhood Highlights**



**Arvo Coffee**



**Liberty Soho**



**Hullmark**  
474 Wellington Street West  
Suite 200  
Toronto, ON M5V 1E3  
t: 416.510.1700  
hullmark.ca

**Mitch Gillin**  
Vice President, Asset Management  
t: 416.510.1700 x 228  
mitch@hullmark.ca

**Jamie Zeldin**  
Director, Asset Management  
t: 416.435.1104  
jamie@hullmark.ca

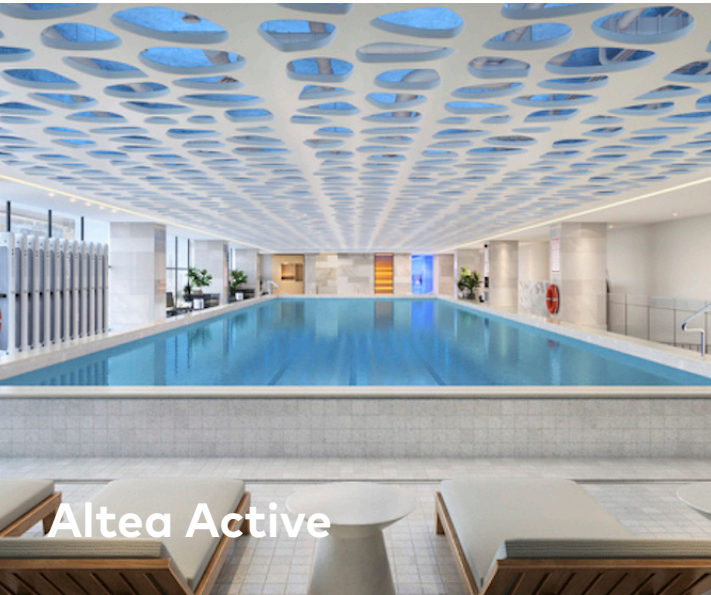
**Pauline Sels**  
Associate, Investments & Asset Management  
t: 416.709.0478  
pauline@hullmark.ca



**BMO Field**



**Mildred's Temple Kitchen**



**Altea Active**