

Contact

Tommy LeBlanc, Partner
tleblanc@mlbcre.com

John-Michael Kamel, Vice President
jmkamel@mlbcre.com

mlbcre.com | (713) 622-1400

Property Features

- **PRICE:** Call for pricing
- **LOCATION:** 10410 Windermere Lakes Blvd
Houston, TX 77065
- **SIZE:** ±1.22 AC
- **FRONTAGE:**
 - FM 1960 Rd W: ±140'
 - Windermere Lakes Blvd: ±225'
 - Palmetto Shores Dr: ±205'
- **ACCESS:** Two (2) curb cuts
Windermere Lakes Blvd
Palmetto Shores Dr
- **RESTRICTIONS:** None
- **DETENTION:** Call broker
- **2023 Tax Rate:** 1.89815%



Property Information & Surveys

2023 Tax Rates

District	Description	2023 Rate
004	Cypress-Fairbanks ISD	1.081100
040	Harris County	0.350070
041	Harris CO Flood Cntrl	0.031050
042	Port of Houston Authy	0.005740
043	Harris CO Hosp Dist	0.143430
044	Harris CO Educ Dept	0.004800
045	Lone Star College Sys	0.107600
633	HC Emerg Srv Dist 9	0.044360
769	NW HC MUD 29	0.130000
Total		1.89815

Demographics & Traffic Counts

Population

1 Mile	3 Miles
15,775	114,910

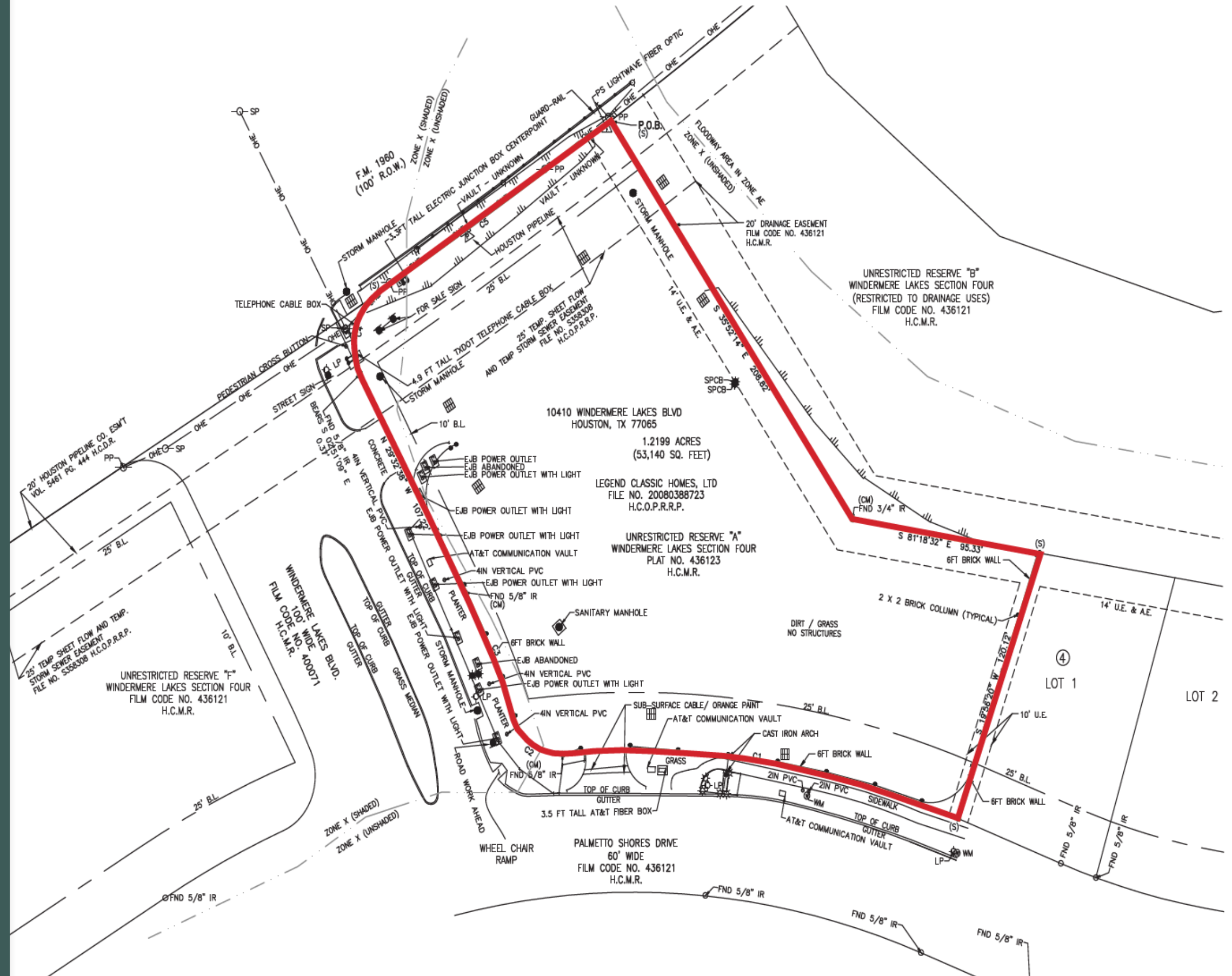
Median Household Income

1 Mile	3 Miles
\$86,542	\$90,895

Traffic Counts

FM 1960 Rd W	22,409 CPD
--------------	------------

Source: CoStar



The Team



Tommy LeBlanc

Partner

tleblanc@mlbcre.com

(713) 304-4521



John-Michael Kamel

Vice President

jmkamel@mlbcre.com

(713) 818-4007



Blake Steele

Senior Associate

bsteele@mlbcre.com

(832) 628-9788