

ONE
MacArthur



Putting it **Together**

919 Hidden Ridge,
Irving, TX 75038



NEWMARK

Professionally owned and managed by

workspace
property trust

VIEW TOWARDS ELEVATOR LOBBY



UPDATED FLOOR PLAN + TEST FIT



BUILDING HIGHLIGHTS



**BUILDING
RENOVATIONS**
in 2026



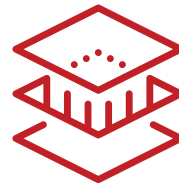
4,150 RSF TO
136,494 RSF
Available



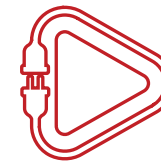
249,838 SF
Class A Office
building



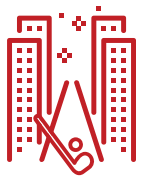
4/1,000 SF
Structured Parking



Total of
136,494 RSF
Suite 400, Suite 500
and Suite 600



**PLUG AND PLAY
OPPORTUNITY
NOT AVAILABLE**



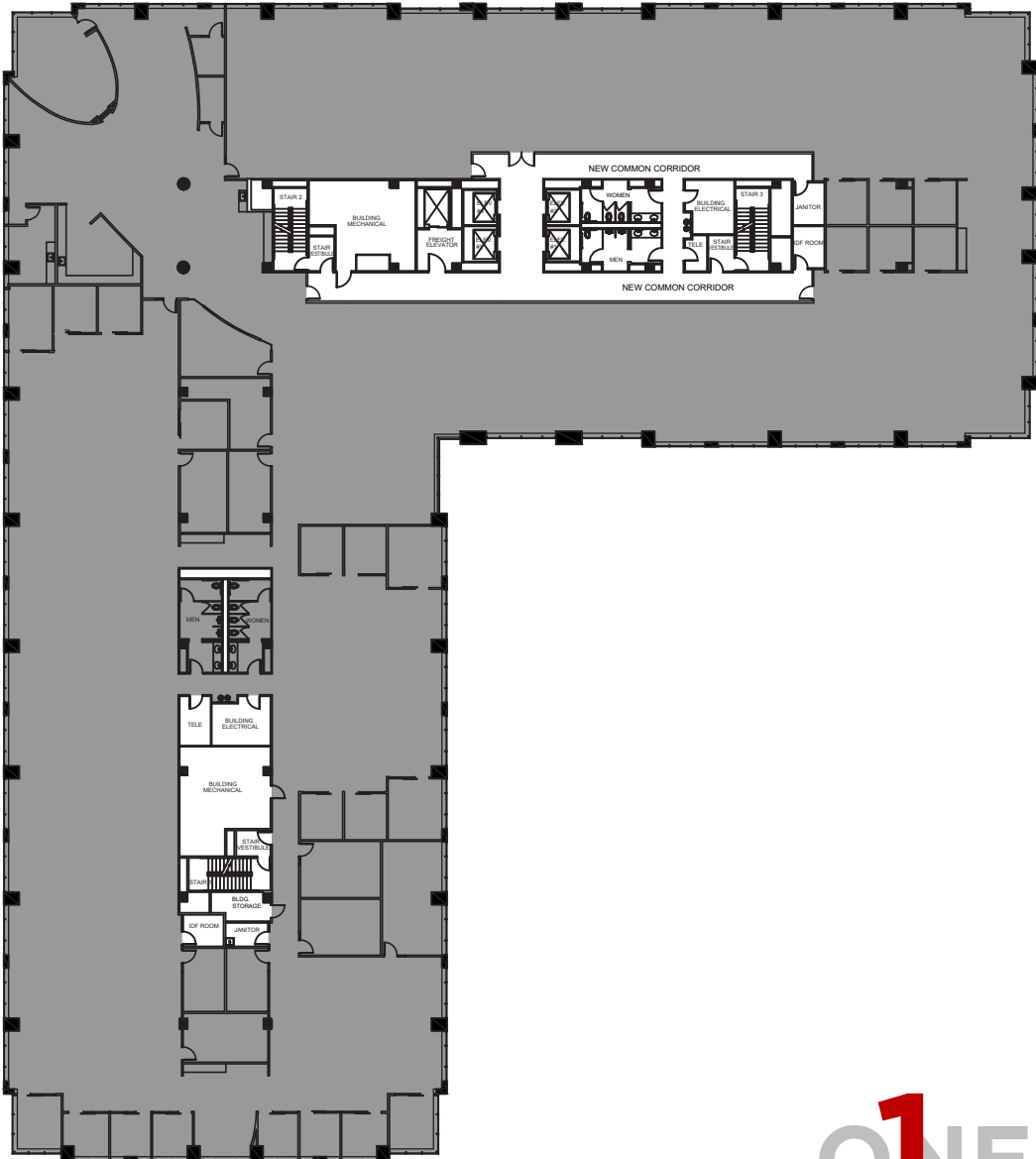
EXCELLENT VIEWS
of the TPC Ritz-Carlton
golf course, Las Colinas
Urban Center,
Downtown Dallas, and
the surrounding areas



**NUMEROUS
NEARBY**
restaurant, retail,
hotel and leisure
amenities

FLOOR PLANS

LEVEL - 04



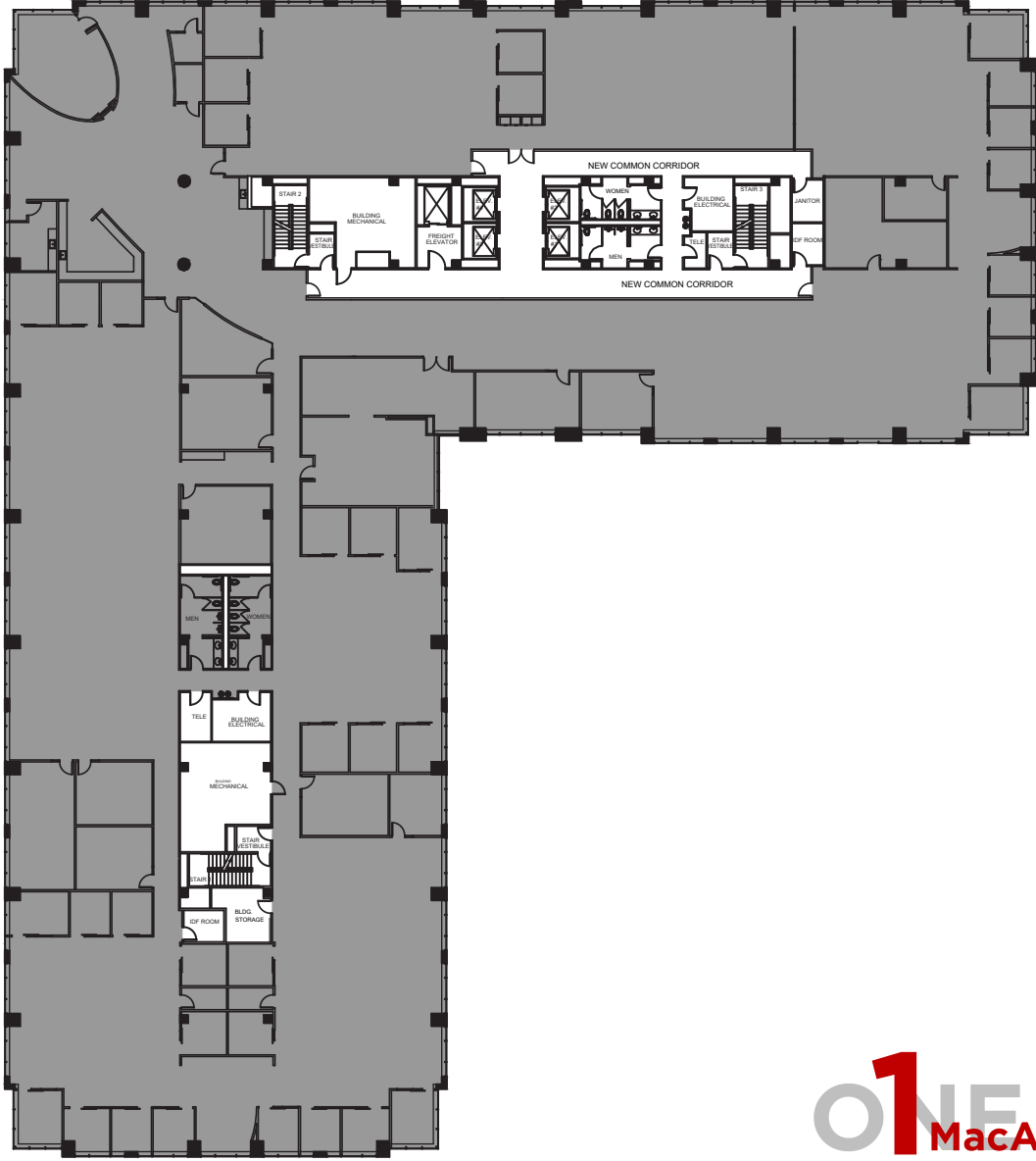
VACANT
SUITE 400
38,212 USF
45,498 RSF



Putting it Together

FLOOR PLANS

LEVEL - 05



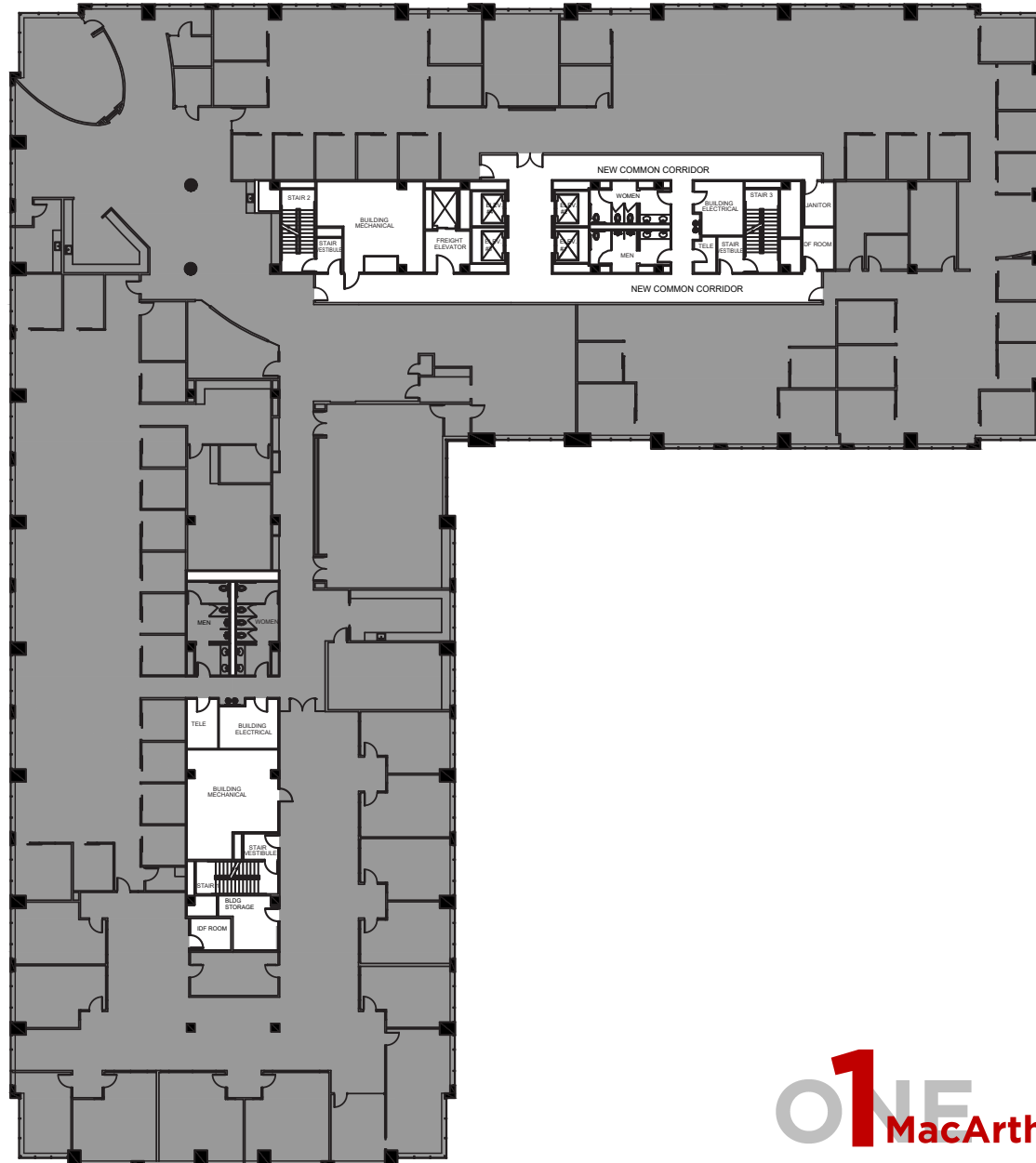
VACANT
SUITE 500
38,212 USF
45,498 RSF



Putting it Together

FLOOR PLANS

LEVEL - 06



VACANT
SUITE 600
38,212 USF
45,498 RSF



Putting it **Together**

CORPORATE NEIGHBORHOOD

PIONEER
NATURAL RESOURCES

Urban Center

verizon



ONE MacArthur | LPA
Putting it Together

WHAT'S IN THE NEIGHBORHOOD



5 minutes
from Irving
Convention Center

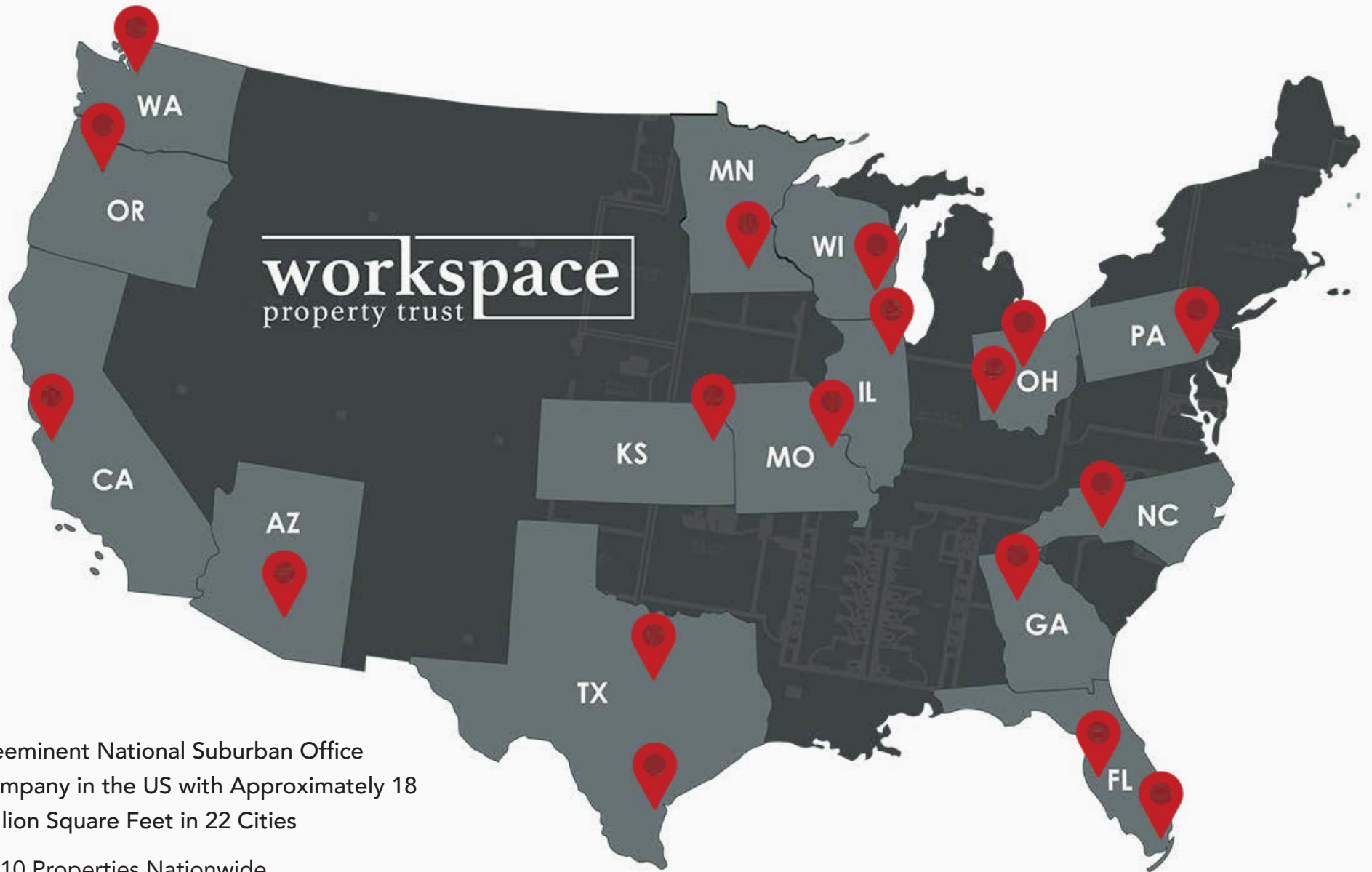
5 minutes
from Toyota
Music Factory

15 minutes
from DFW
International Airport

18 minutes
from Love
Field Airport

100+
Restaurants & bars in
1 mile radius

EXQUISITE OWNERSHIP



Preeminent National Suburban Office Company in the US with Approximately 18 Million Square Feet in 22 Cities

- 210 Properties Nationwide
- Find Your Space with Workspace



Putting it **Together**

Nathan Durham

Executive Managing Director

469 467 2064

nathan.durham@nmrk.com

Duane Henley

Executive Managing Director

469 467 2059

duane.henley@nmrk.com

NEWMARK

workspace
property trust