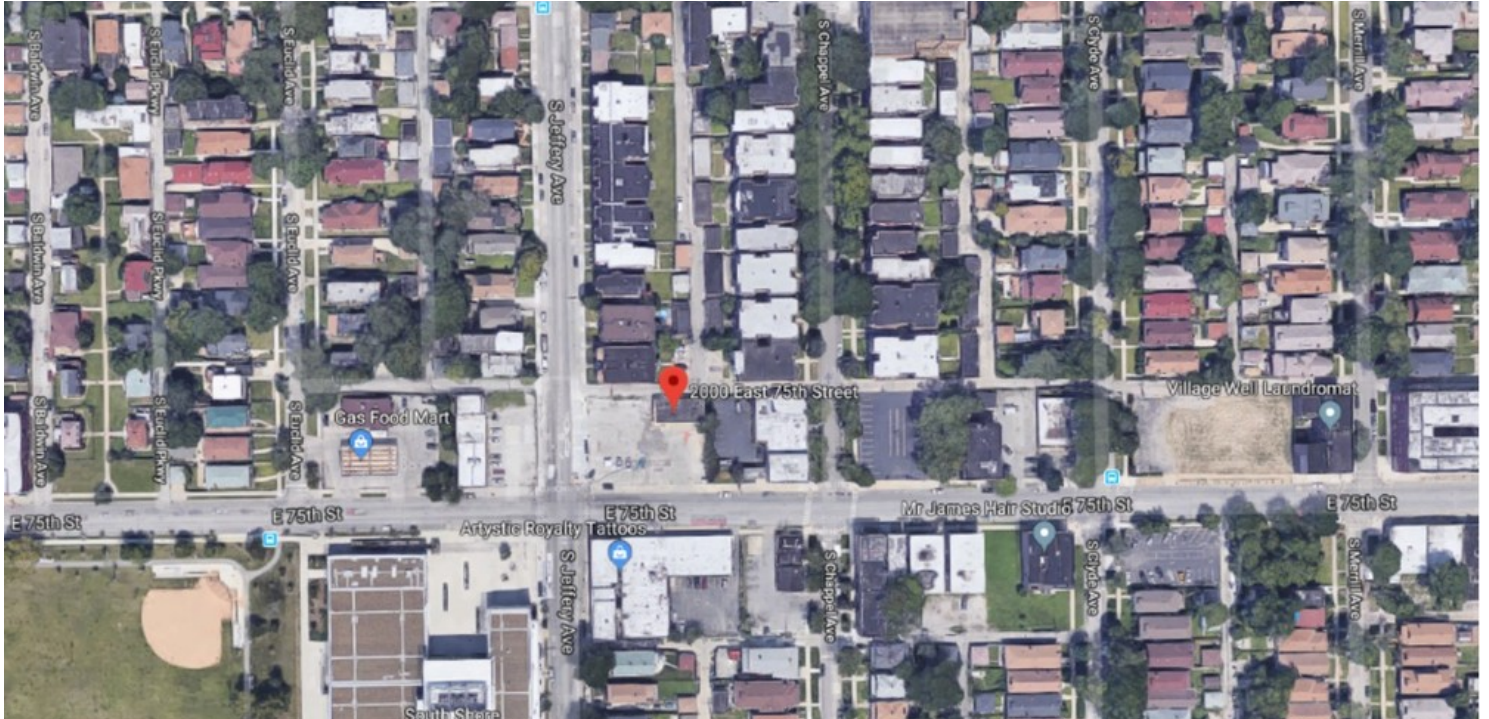


2000 E 75th St , Chicago, IL 60649

NEC of 75th St & Jeffery Blvd



OFFERING SUMMARY

Sale Price:	\$435,000
Lot Size:	110'x 142'
Zoning:	RS 3
Market:	Chicago
Submarket:	South Chicago
Traffic Count:	16,000
Price / SF:	\$27.84

PROPERTY OVERVIEW

The site is located in Chicago's South Shore Community on the northeast corner of 75th St and Jeffery Blvd., a four way traffic light intersection. The area is densely populated and the site is in a vibrant mixed use business district area. The new South Shore College Prep High School is on the southeast corner of the same intersection. The major shopping district with some big box is located less than a half mile north on Jeffery Blvd.

PROPERTY HIGHLIGHTS

- 16,170sf site improved with a 1700sf rectangular building. Formerly an auto repair shop.

for more
information

Neil Haleem

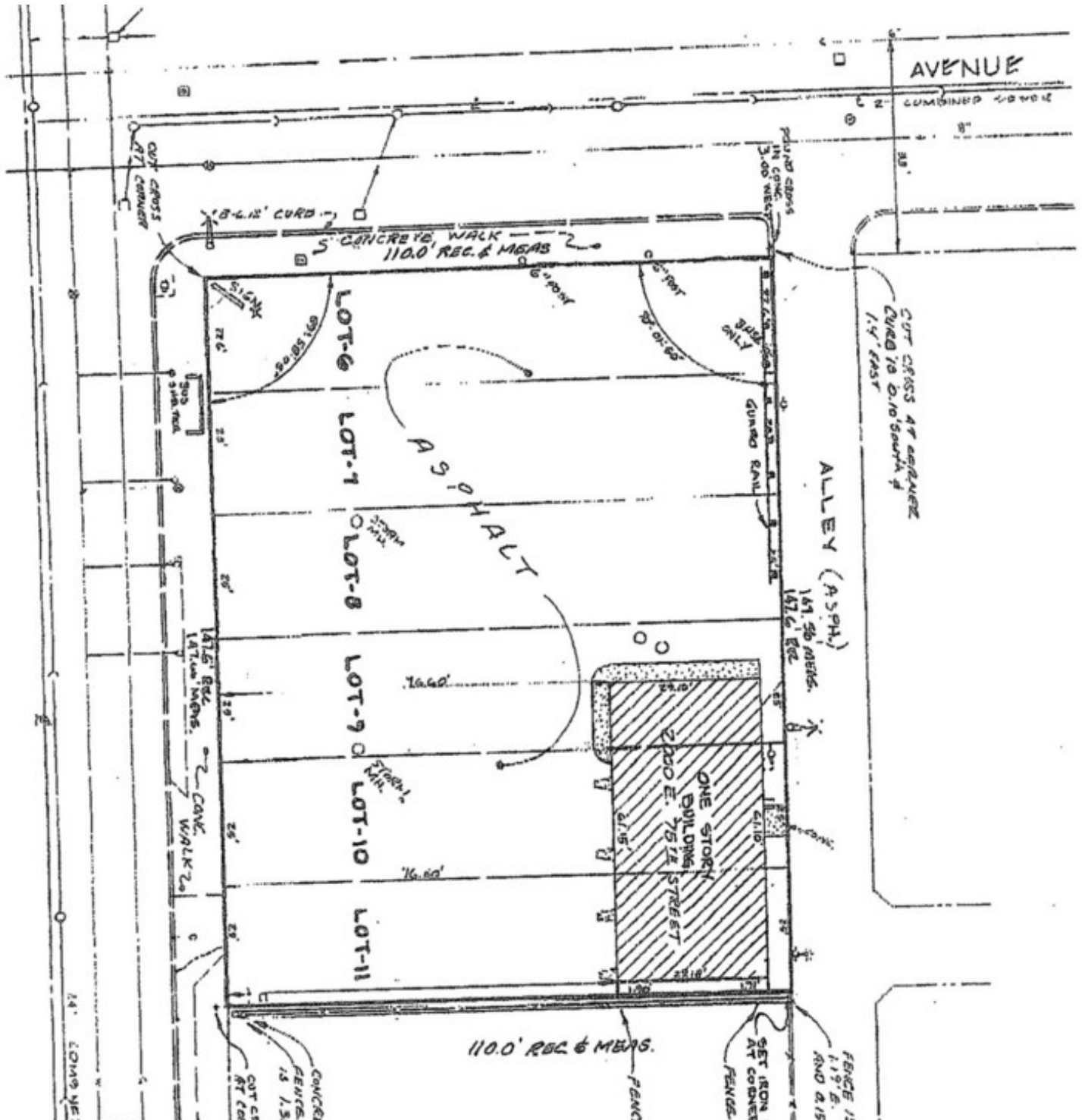
708.873.5540

neil@networkregroup.com



2000 E 75th St , Chicago, IL 60649

NEC of 75th St & Jeffery Blvd



for more
information

Neil Haleem

708.873.5540

neil@networkregroup.com



2000 E 75th St , Chicago, IL 60649

NEC of 75th St & Jeffery Blvd



Land For Sale October 11, 2020

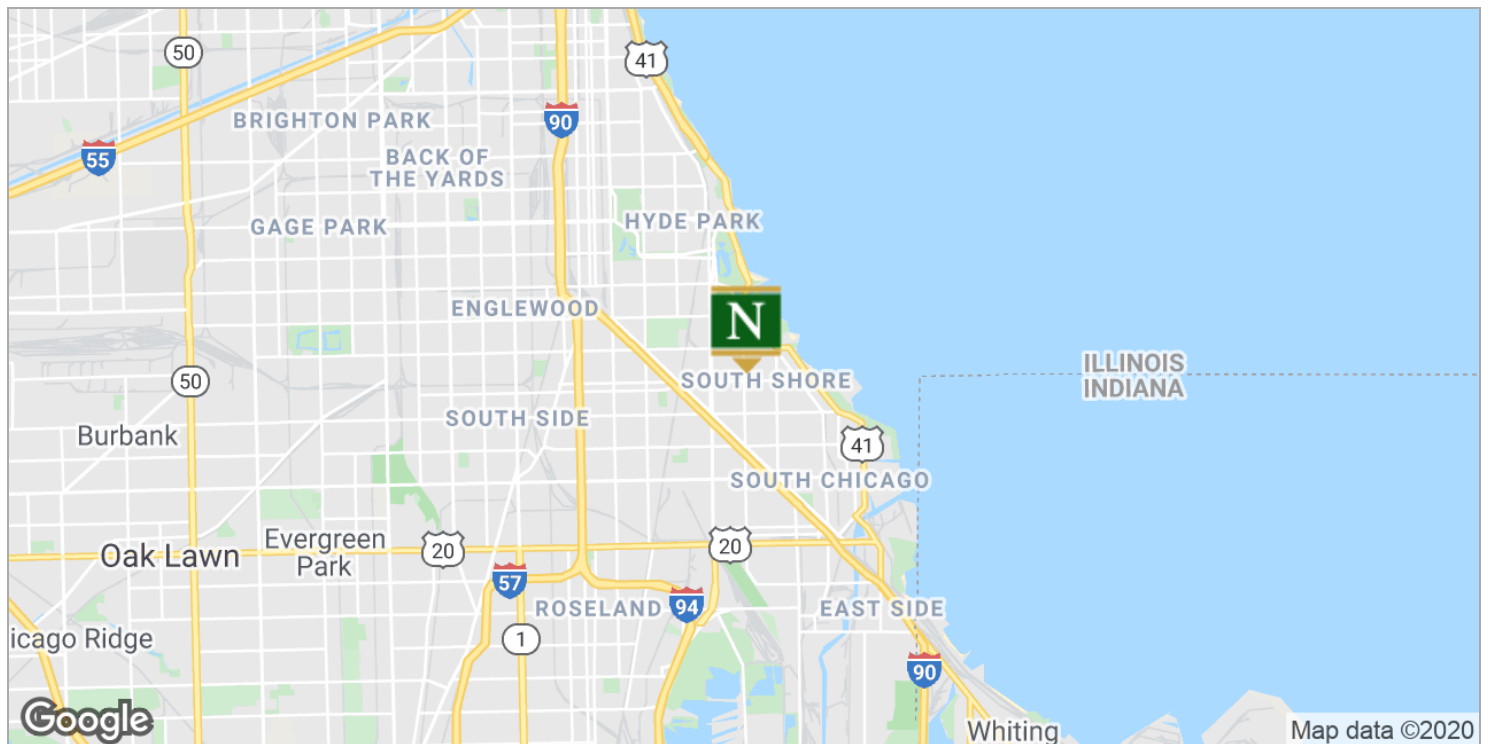
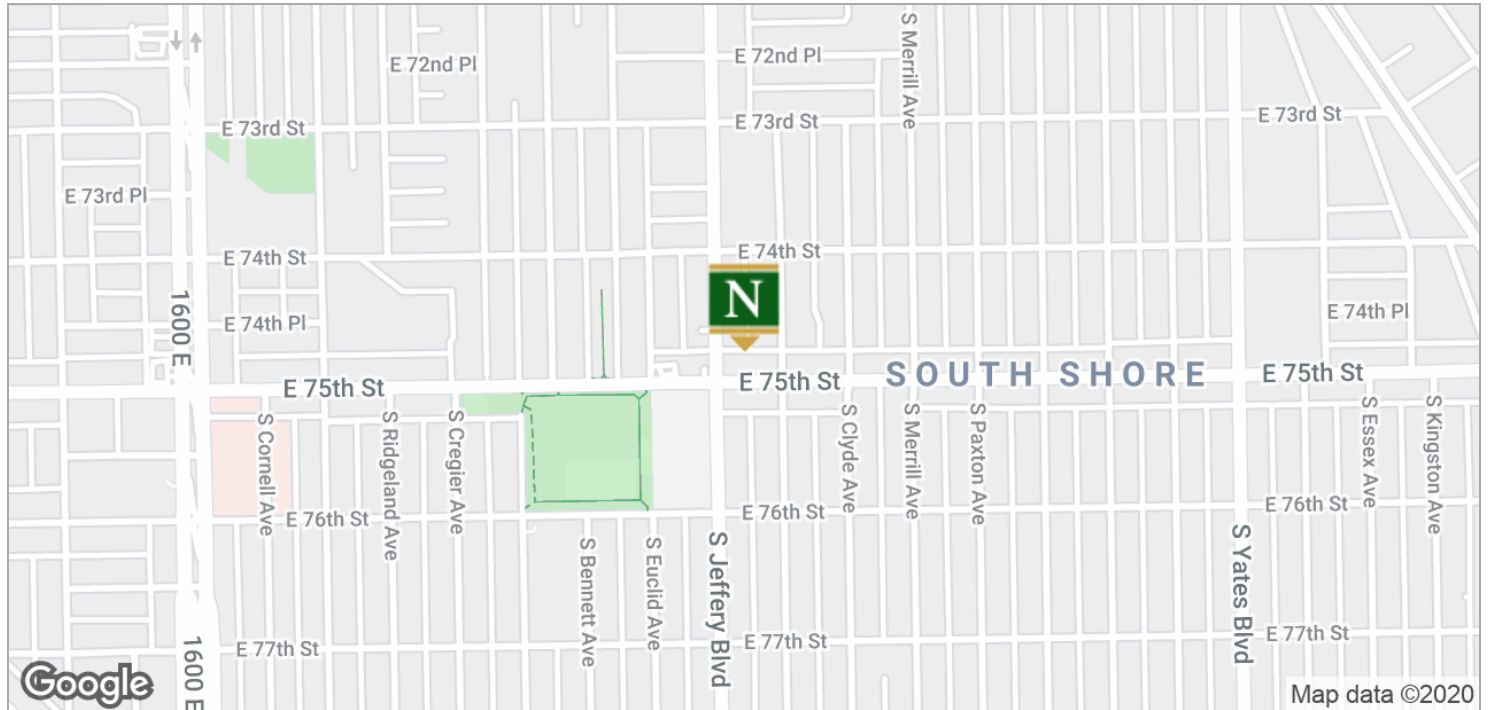
for more information

Neil Haleem
708.873.5540
neil@networkregroup.com



2000 E 75th St , Chicago, IL 60649

NEC of 75th St & Jeffery Blvd



Land For Sale October 11, 2020

for more
information

Neil Haleem

708.873.5540

neil@networkregroup.com



2000 E 75th St , Chicago, IL 60649

NEC of 75th St & Jeffery Blvd



	0.5 MILES	1 MILE	1.5 MILES
POPULATION			
Total population	11,180	47,927	81,422
Median age	37.5	36.9	37.8
Median age (Male)	33.6	31.6	32.8
Median age (Female)	42.4	40.9	41.0
HOUSEHOLDS & INCOME			
Total households	4,854	20,986	34,967
# of persons per HH	2.3	2.3	2.3
Average HH income	\$44,676	\$43,328	\$43,842
Average house value	\$228,725	\$208,817	\$195,559
ETHNICITY (%)			
Hispanic	0.6%	0.7%	1.0%
RACE (%)			
White	0.8%	1.1%	1.2%
Black	97.5%	97.0%	96.8%
Asian	0.2%	0.2%	0.2%
Hawaiian	0.1%	0.1%	0.1%
American Indian	0.1%	0.1%	0.1%
Other	0.5%	0.5%	0.6%

* Demographic data derived from 2010 US Census

for more
information

Neil Haleem

708.873.5540

neil@networkregroup.com

