

For Lease

Powerline Park

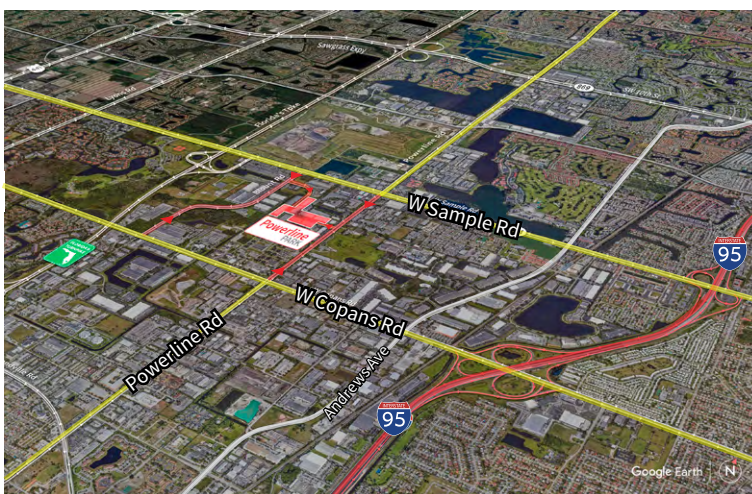
3000 NW 25th Avenue
Pompano Beach, Florida 33069



Industrial Space For Lease
3,290 SF

Powerline Park

3000 NW 25th Avenue, Pompano Beach, Florida 33069



Location

- Easy access off Sample Road and Powerline Road
- Excellent access to I-95 and the Florida Turnpike
- Equidistant to Fort Lauderdale/Hollywood International Airport and Palm Beach International Airport

Space Features

- 3,290 SF total
- 1,570 SF of office
- 1,720 SF of warehouse
- 16' clear height
- One (1) grade level door
- End-cap space
- Air-conditioned warehouse
- Parking ratio: 2.0/1,000 sf



© 2022 Jones Lang LaSalle IP, Inc.

Yuri Quispe

D +1 954 233 3462

M +1 772 201 5305

yuri.quispe@jll.com

Peter Sheridan

D +1 954 653 3235

M +1 954 439 4941

peter.sheridan@jll.com

Peter Johnston

D +1 954 233 3429

M +1 954 980 3224

peter.johnston1@jll.com



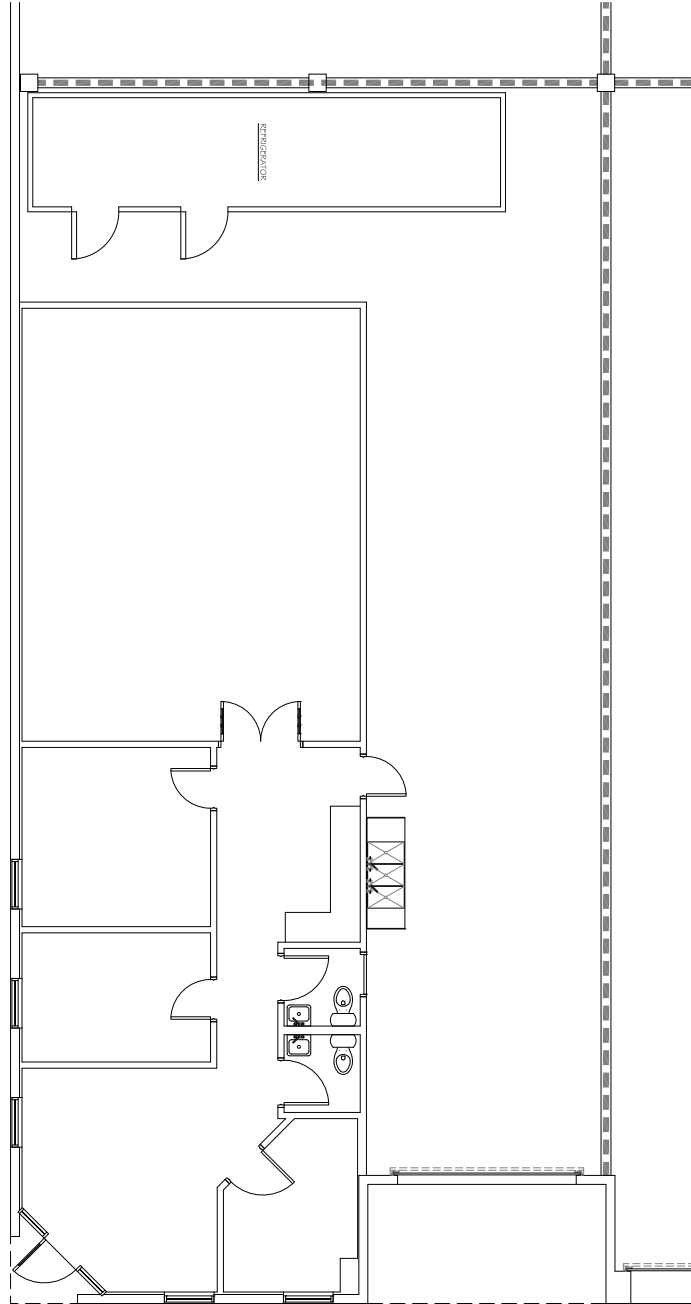
For Lease

Powerline Park

3000 NW 25th Avenue, Pompano Beach, Florida 33069

Powerline Park Floor Plan - Suite 3000 - 2

Total: 3,290 SF
Office: 1,570 SF
Warehouse: 1,720 SF



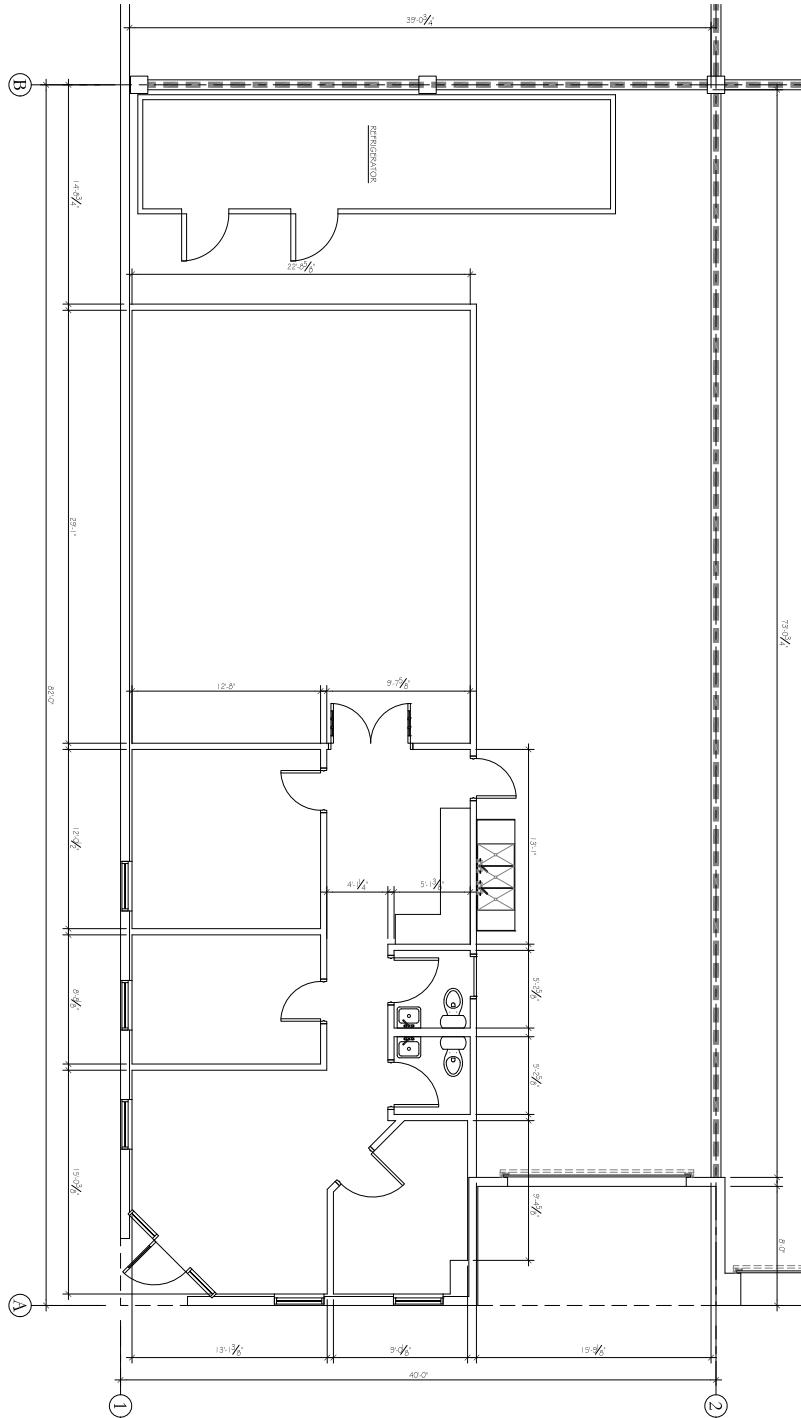
For Lease

Powerline Park

3000 NW 25th Avenue, Pompano Beach, Florida 33069

Powerline Park Dimensioned Floor Plan - Suite 3000 - 2

Total: 3,290 SF
Office: 1,570 SF
Warehouse: 1,720 SF



For Lease

Powerline Park

3000 NW 25th Avenue, Pompano Beach, Florida 33069

Powerline Park Site Plan

 - Subject Property



Building	Suite	Total (SF)	Office (SF)	Warehouse (SF)	Loading	Clear Height	Available Date
6	3000 - 2	3,290	1,570	1,720	1 G	16'	2/1/2024

