

**CUSHMAN &
WAKEFIELD**

2800 Lakeside Drive
Bannockburn, Illinois

400,000 SF AVAILABLE



HOME

AVAILABLE

SITE PLAN

BUILDING PLAN

LOCATION

For more information, please contact:

Keith Puritz
Executive Director
847 720 1366
keith.puritz@cushwake.com

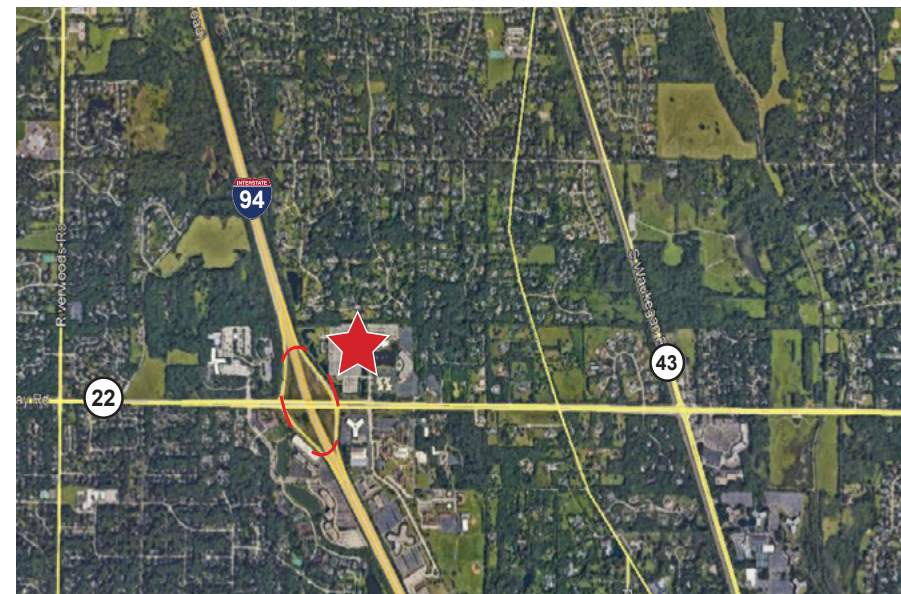
Chris Cummins
Executive Director
847 518 3238
chris.cummins@cushwake.com

Brett Kroner
Executive Director
847 720 1367
brett.kroner@cushwake.com

Eric Fischer
Managing Director
847 720 1369
eric.fischer@cushwake.com

Property Highlights

Building Size:	400,000 SF
Site Size:	26.8 Acres
Office:	58,120 SF (two-story)
Warehouse:	341,880 SF
Clear Height:	24' & 28'
Loading:	24 interior docks
Car Parking:	450 spaces
Sprinkler:	ESFR
Power:	North Building: 2500 amps @277/480 volts South Building: 4000 amps @277/480 volts
Lease Rate:	Subject to Proposal
Real Estate Taxes:	\$1.00 psf (2017)



- Excellent Lake County Location
 - Tollway exposure
 - 4way interchange I-94/Half Day Road
 - Easy access to Northshore
 - 20 minutes to O'Hare
 - 40 minutes to Chicago
- Large local labor force
- Pro-business community
- Low Lake County taxes

For more information, please contact:

Keith Puritz
Executive Director
847 720 1366
keith.puritz@cushwake.com

Chris Cummins
Executive Director
847 518 3238
chris.cummins@cushwake.com

Brett Kroner
Executive Director
847 720 1367
brett.kroner@cushwake.com

Eric Fischer
Managing Director
847 720 1369
eric.fischer@cushwake.com

HOME

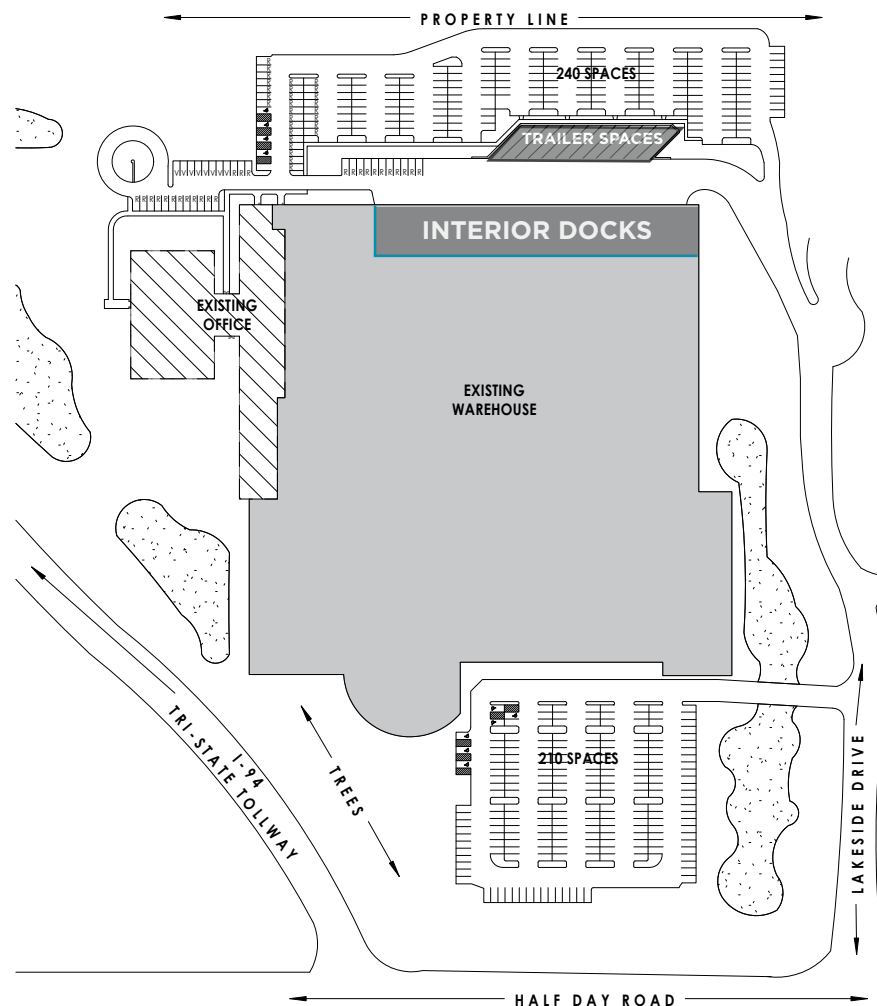
AVAILABLE

SITE PLAN

BUILDING PLAN

LOCATION

SITE PLAN



For more information, please contact:

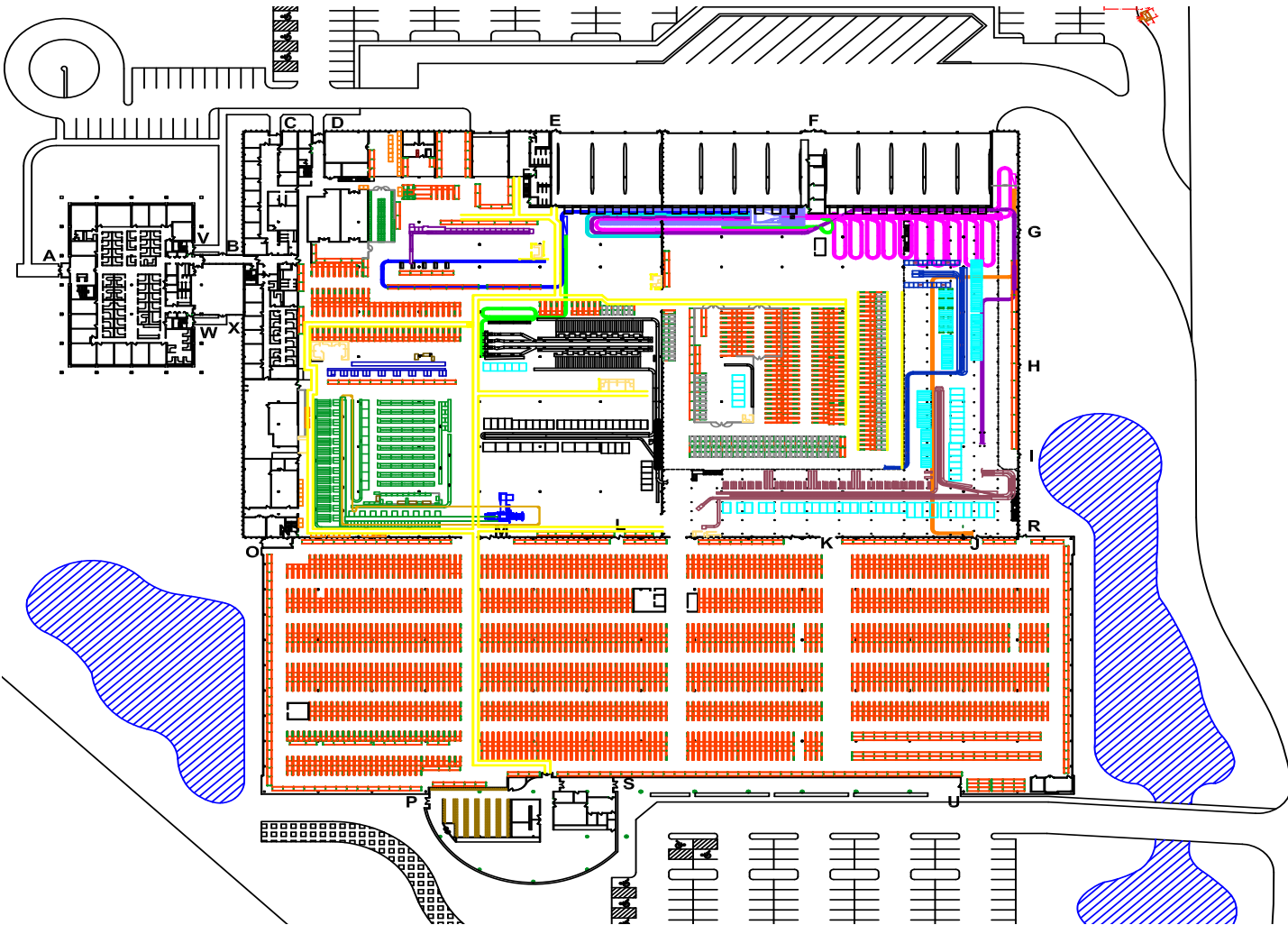
Keith Puritz
Executive Director
847 720 1366
keith.puritz@cushwake.com

Chris Cummins
Executive Director
847 518 3238
chris.cummins@cushwake.com

Brett Kroner
Executive Director
847 720 1367
brett.kroner@cushwake.com

Eric Fischer
Managing Director
847 720 1369
eric.fischer@cushwake.com

Building Plan



LAKESIDE

For more information, please contact:

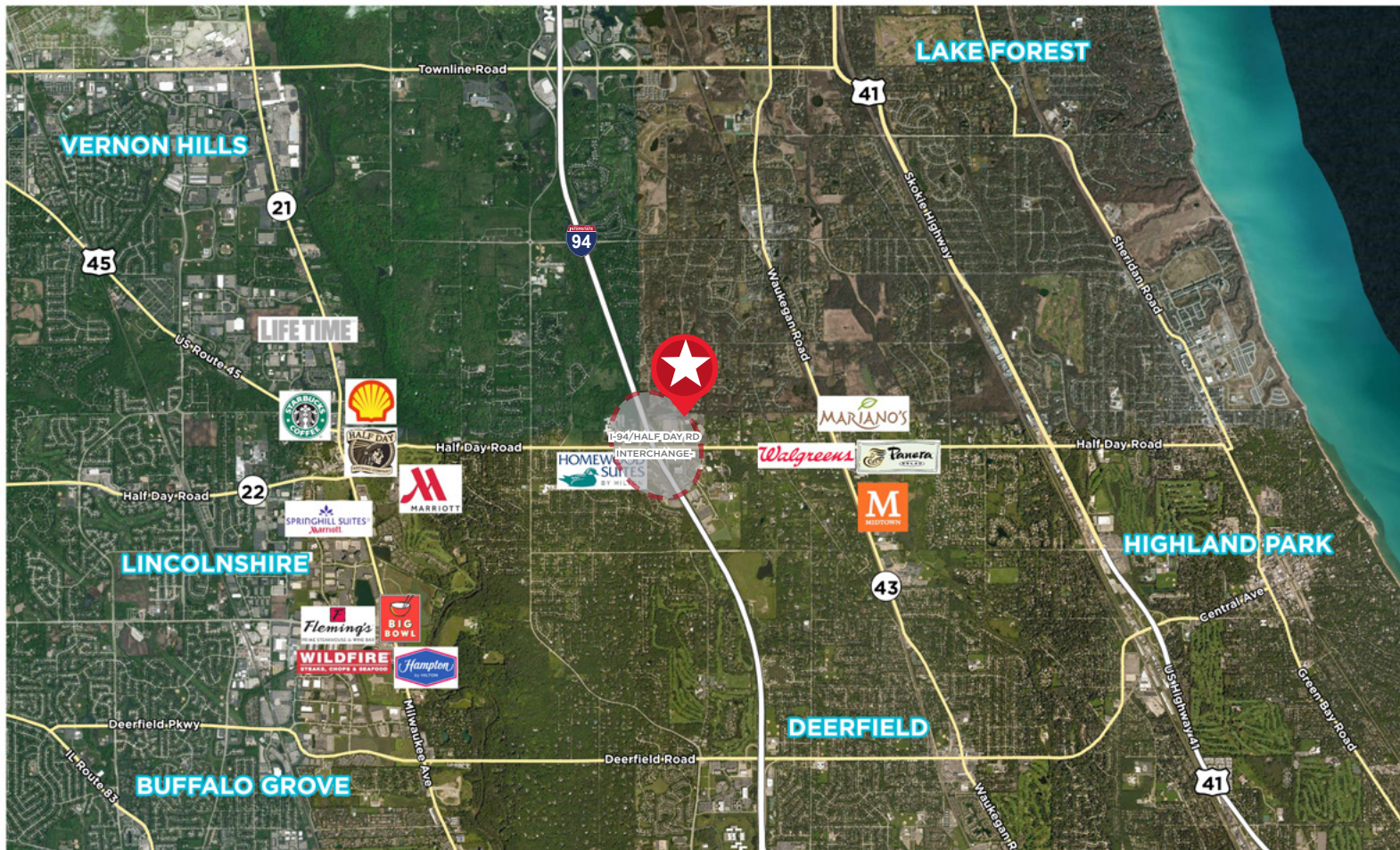
Keith Puritz
Executive Director
847 720 1366
keith.puritz@cushwake.com

Chris Cummins
Executive Director
847 518 3238
chris.cummins@cushwake.com

Brett Kroner
Executive Director
847 720 1367
brett.kroner@cushwake.com

Eric Fischer
Managing Director
847 720 1369
eric.fischer@cushwake.com

Location



For more information, please contact:

Keith Puritz
Executive Director
847 720 1366
keith.puritz@cushwake.com

Chris Cummins
Executive Director
847 518 3238
chris.cummins@cushwake.com

Brett Kroner
Executive Director
847 720 1367
brett.kroner@cushwake.com

Eric Fischer
Managing Director
847 720 1369
eric.fischer@cushwake.com