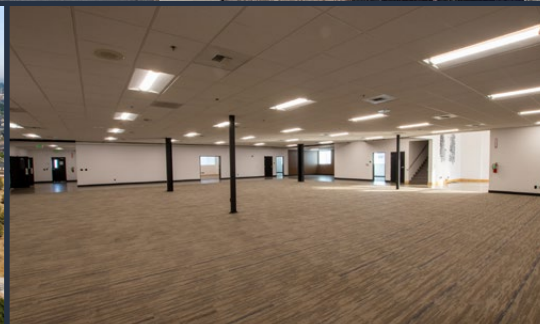


# FOR LEASE

24,749 SF | \$1.20/SF/MO. NNN

## Industrial Warehouse/Manufacturing Space

63075 NE 18th Street, Suite 100, OR 97701



### PROPERTY DETAILS

<b>Suite 100:</b>	24,749 SF
<b>Lease Rate:</b>	\$1.20/SF/Mo. NNN
<b>CAMs:</b>	Est at. \$0.33/SF/Mo.
<b>Zoning:</b>	Light Industrial (IL)
<b>Parking:</b>	Ample on-site parking
<b>Date Avail:</b>	November 1, 2025

### HIGHLIGHTS

- Suite 100 is comprised of 16,749 SF of warehouse space and 8,000 SF of office space
- Easy access to Highways 20 and 97
- 1 dock-high door and 3 grade level doors
- Outstanding truck access
- The premises also includes the second floor portion without additional charges

**Robert Raimondi, CCIM | Peter May, CCIM**  
**Emilio Tiscareno, Broker**

600 SW Columbia St., Ste. 6100 | Bend, OR 97702

**541.383.2444** | [www.CompassCommercial.com](http://www.CompassCommercial.com)

**COMPASS**  
**COMMERCIAL**

**REAL  
ESTATE  
SERVICES**

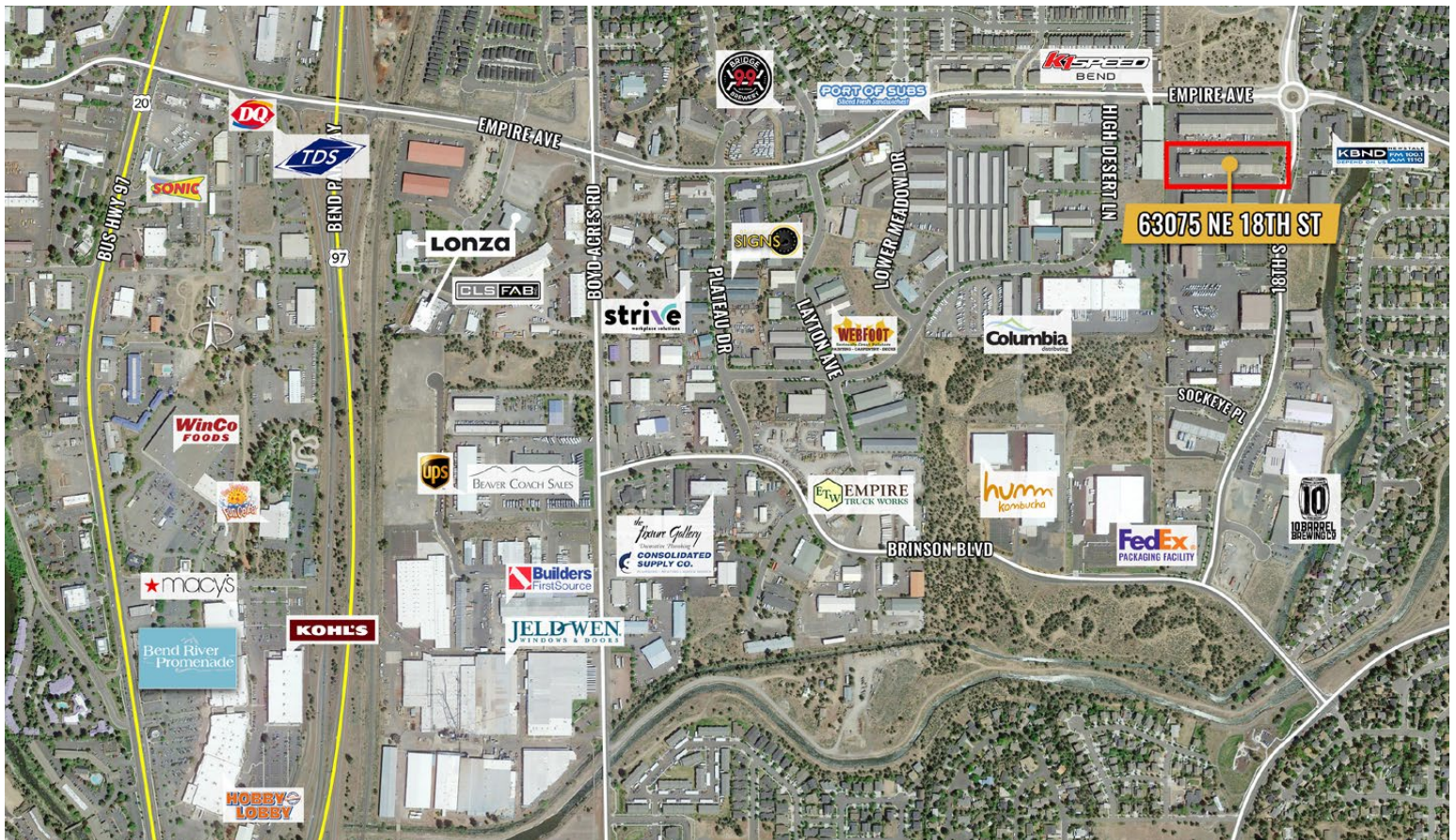
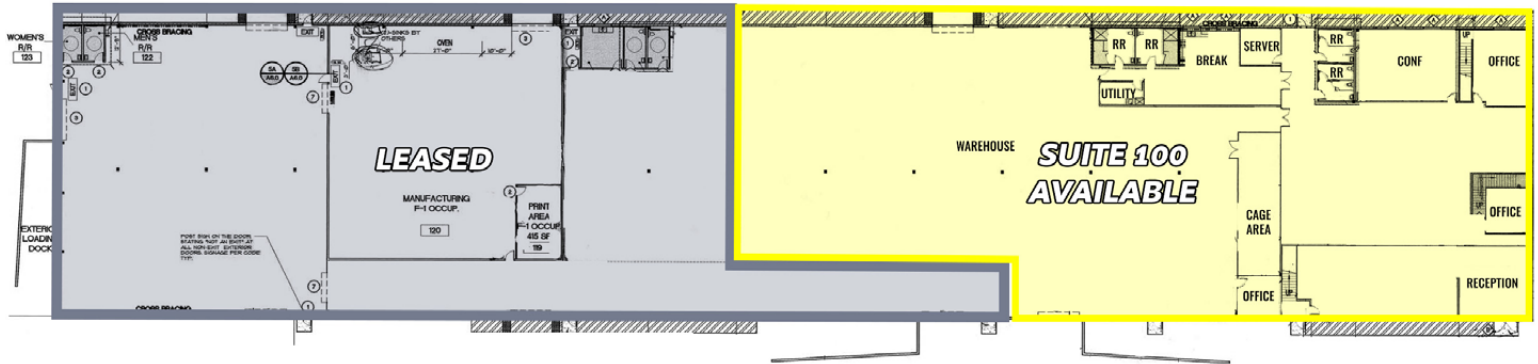


# FOR LEASE

24,749 SF | \$1.20/SF/MO. NNN

## Industrial Warehouse/Manufacturing Space

63075 NE 18th Street, Suite 100, OR 97701



Brokers are licensed in the state of Oregon. This information has been furnished from sources we deem reliable, but for which we assume no liability. This is an exclusive listing. The information contained herein is given in confidence with the understanding that all negotiations pertaining to this property be handled through Compass Commercial Real Estate Services. All measurements are approximate.



**Robert Raimondi, CCIM**  
Broker  
Cell 541.771.2020  
rraimondi@compasscommercial.com



**Peter May, CCIM**  
Partner, Principal Broker  
Cell 541.408.3888  
pmay@compasscommercial.com



**Emilio Tiscareno**  
Broker  
Cell 541.213.9640  
etiscareno@compasscommercial.com

**COMPASS**  
COMMERCIAL  
REAL ESTATE  
SERVICES