

FOR LEASE

Owned and Operated by



SPACE CENTER EXECUTIVE PARK

220 NW Space Center Drive, Lee's Summit, Missouri

435,275 (±) SF



SPACE DETAILS

- 435,275 (±) sf available, divisible
- 419,022 (±) sf of warehouse
- 16,253 (±) sf of office
- 32 (8'x8') truck doors
- 2 drive-in doors
- 277/480V 3Ø - 3,700 AMPS
- 120/208V 3Ø - 2,000 AMPS
- Contact for lease rate
- Estimated taxes, insurance, and CAM at \$1.43/sf

PARK OVERVIEW

- Ideal for office, warehousing, manufacturing and logistics
- The development offers room to grow
- Proximity to 291 Hwy, I-70 and I-470
- Favorable tax base with lower rents and utilities
- Low humidity and 65 degree standard temperature year-round
- Fitted with state-of-the-art fire detection and suppression equipment

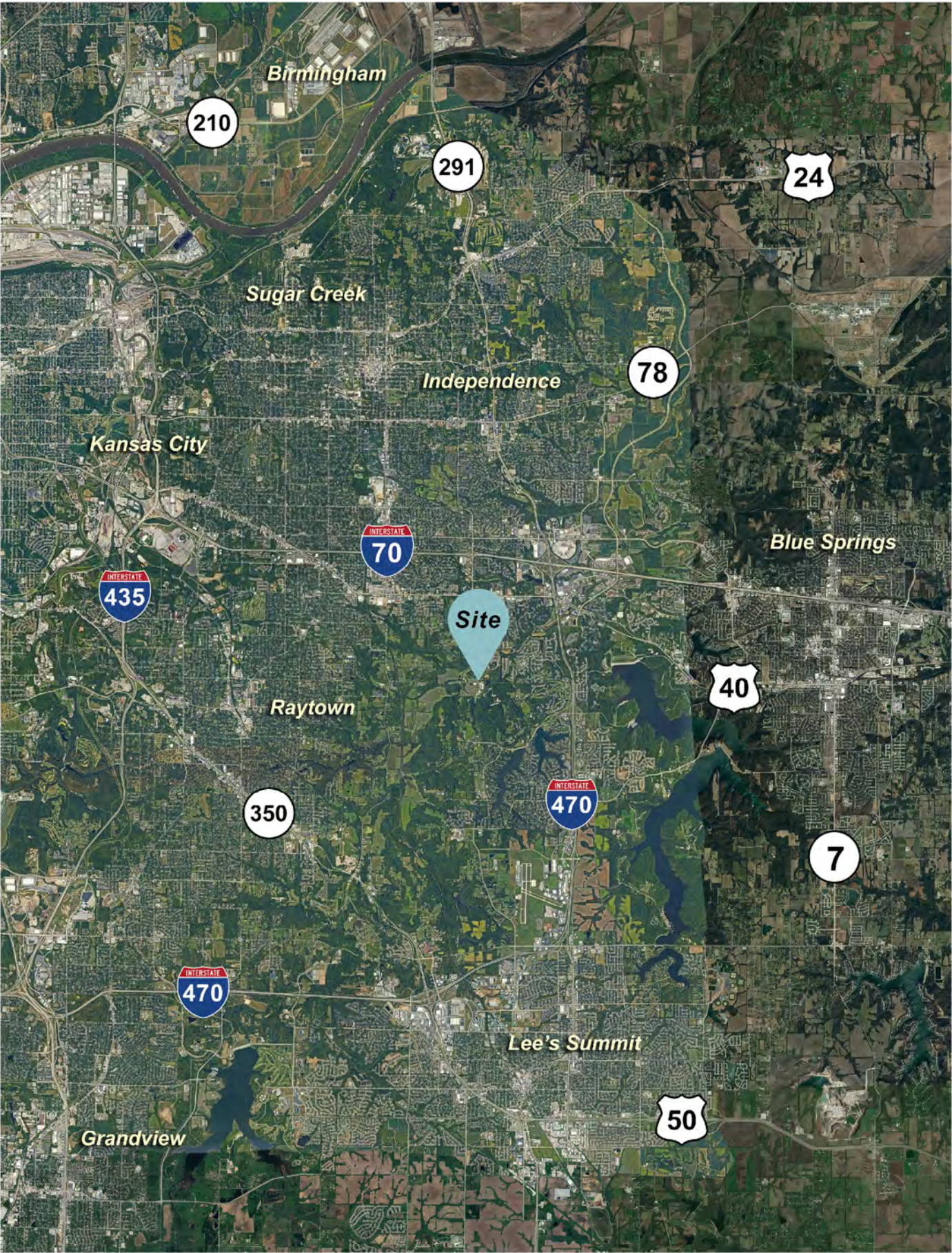
LEASING INFO & CONTACT

Seamus M. McLaughlin 816-268-4223 smclaughlin@nzimmer.com

John F. Hassler 816-268-4208 jhassler@nzimmer.com

Mark C. Long 816-512-1011 mlong@nzimmer.com

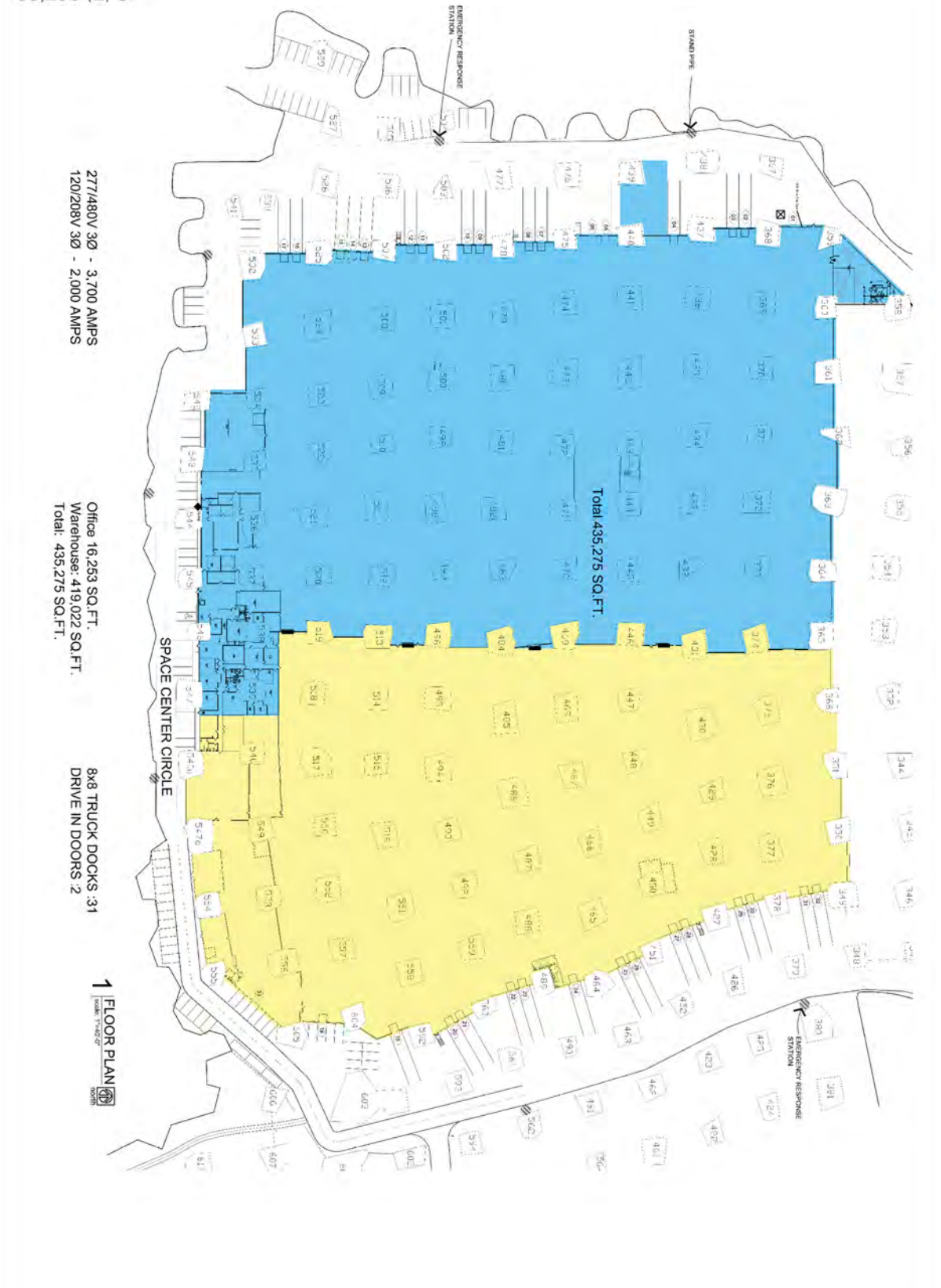
NEWMARK
ZIMMER



FLOOR PLAN

Blue - 241,985 (±) sf

Yellow - 193,290 (±) sf



FLOOR PLAN

