

411
NORTH
WASHINGTON



411
NORTH
WASHINGTON

Introducing the re-imagined 411 North Washington. Located in the heart of the Baylor University Medical Center and bordered by Deep Ellum – Dallas' most energetic and authentic neighborhood. 411 North Washington offers healthcare providers and companies over 217,000 SF of Class A space with sweeping views of Dallas and access to the most active restaurant and entertainment district in Dallas. With recent renovations designed by global architecture firm Perkins+Wills, the building offers tenants a brand new Cowboys Fits facility and access to the almost 6 acre Landry Park, large floorplates, and garage parking.



ABOUT THE BUILDING

A+

Class A
Medical / Office

7

Stories
217,144 SF

5.8

Acre Park &
Running Track

24

Hour Campus
Security

- + Full building renovations completed
- + Hassle free location at BUMC
- + Abundant parking with 2 levels of underground garage parking
- + Access to 5.8 acre Landry Park
- + Free patient and visitor parking
- + Walking distance to Baylor DART station
- + Sweeping views of downtown Dallas
- + Full service rate - No base year
- + First class management and maintenance team
- + Strong community of referring physicians





JOIN A WINNING GROUP OF TENANTS

- ≡ REHABILITATION
- ≡ IMAGING
- ≡ HEART & VASCULAR
- ≡ MOHS SURGERY
- ≡ NEPHROLOGY
- ≡ EARS, NOSE, THROAT
- ≡ INTERNAL MEDICINE
- ≡ JOINT & SPINE
- ≡ ORTHOPEDICS
- ≡ DERMATOLOGY
- ≡ OB/GYN
- ≡ COWBOYS FIT

COWBOYS FIT

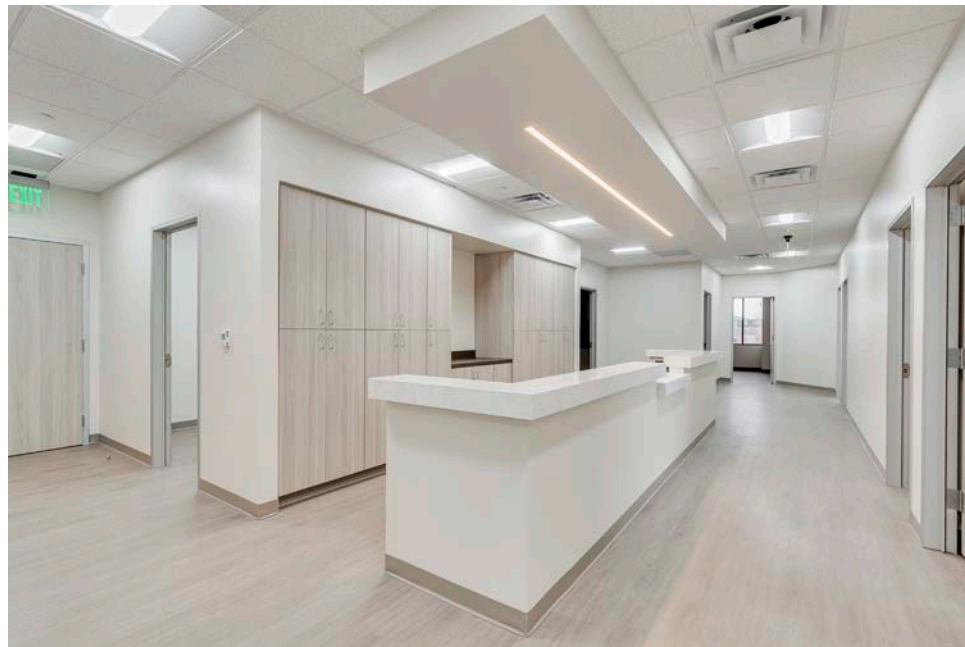
GROUP FITNESS CLASSES



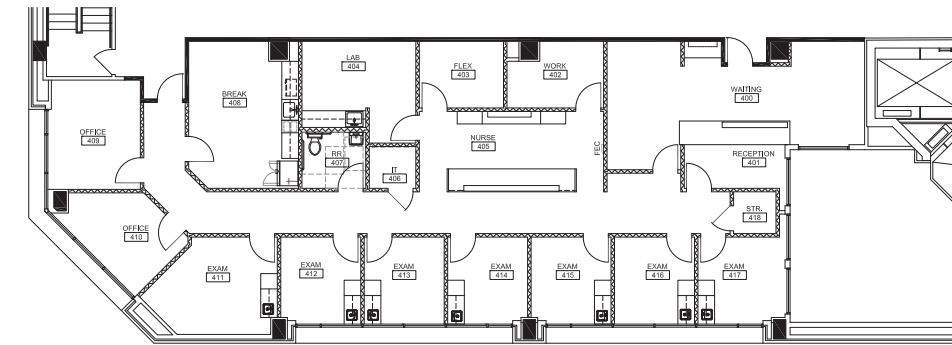
COWBOYS FIT

PERSONAL TRAINING

SPEC SUITE IMAGES



MOVE-IN READY SPEC SUITES

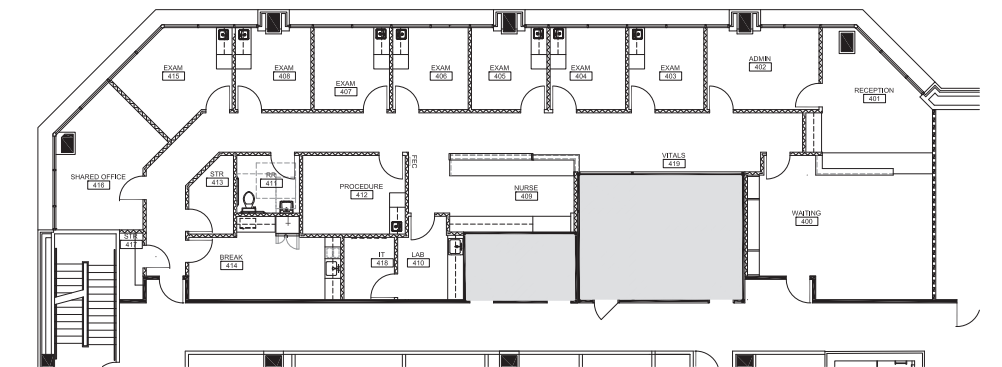


SUITE 4100

3,857 RSF Available

SUITE 4200

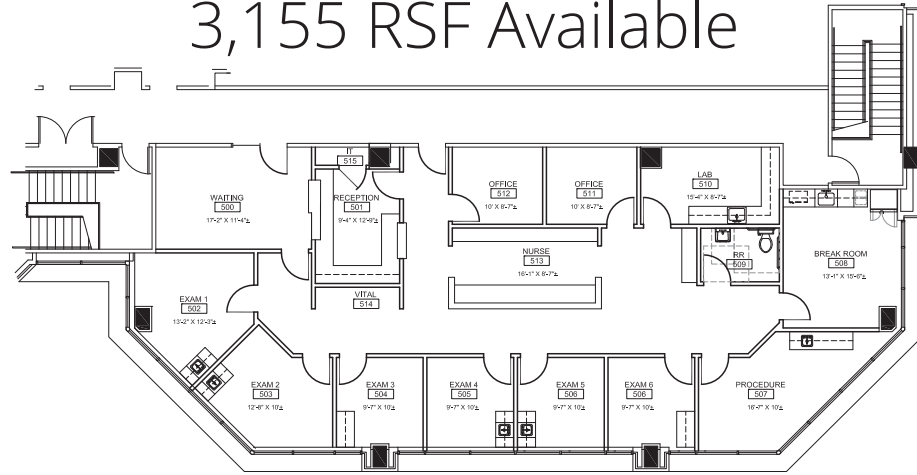
4,123 RSF Available



MOVE-IN READY SPEC SUITES

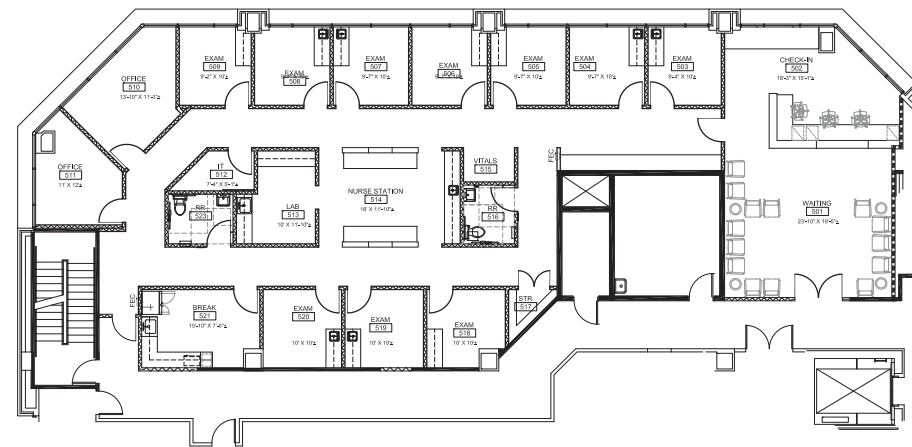
SUITE 5000

3,155 RSF Available



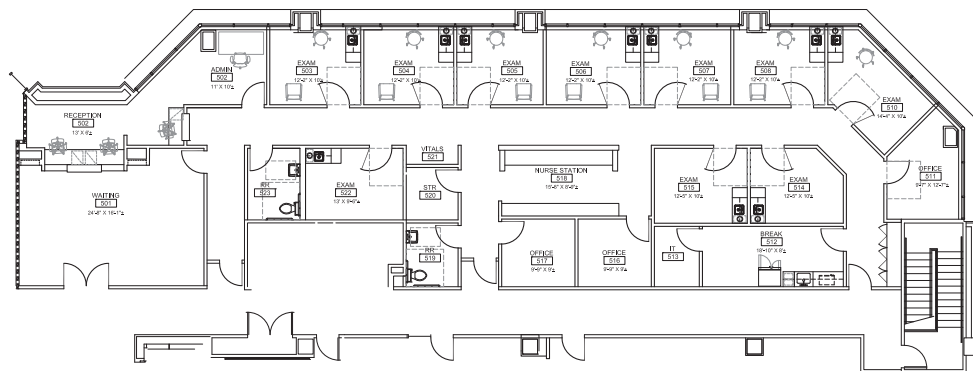
SUITE 5200

4,461 RSF Available



SUITE 5300

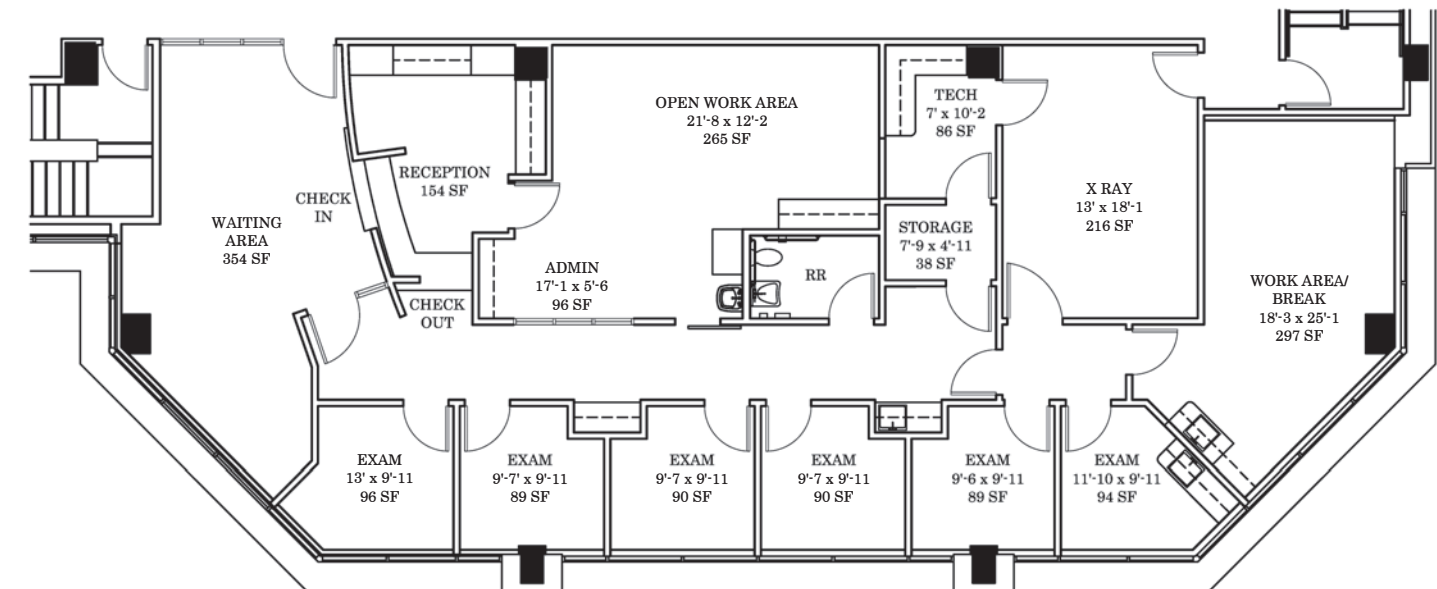
4,618 RSF Available



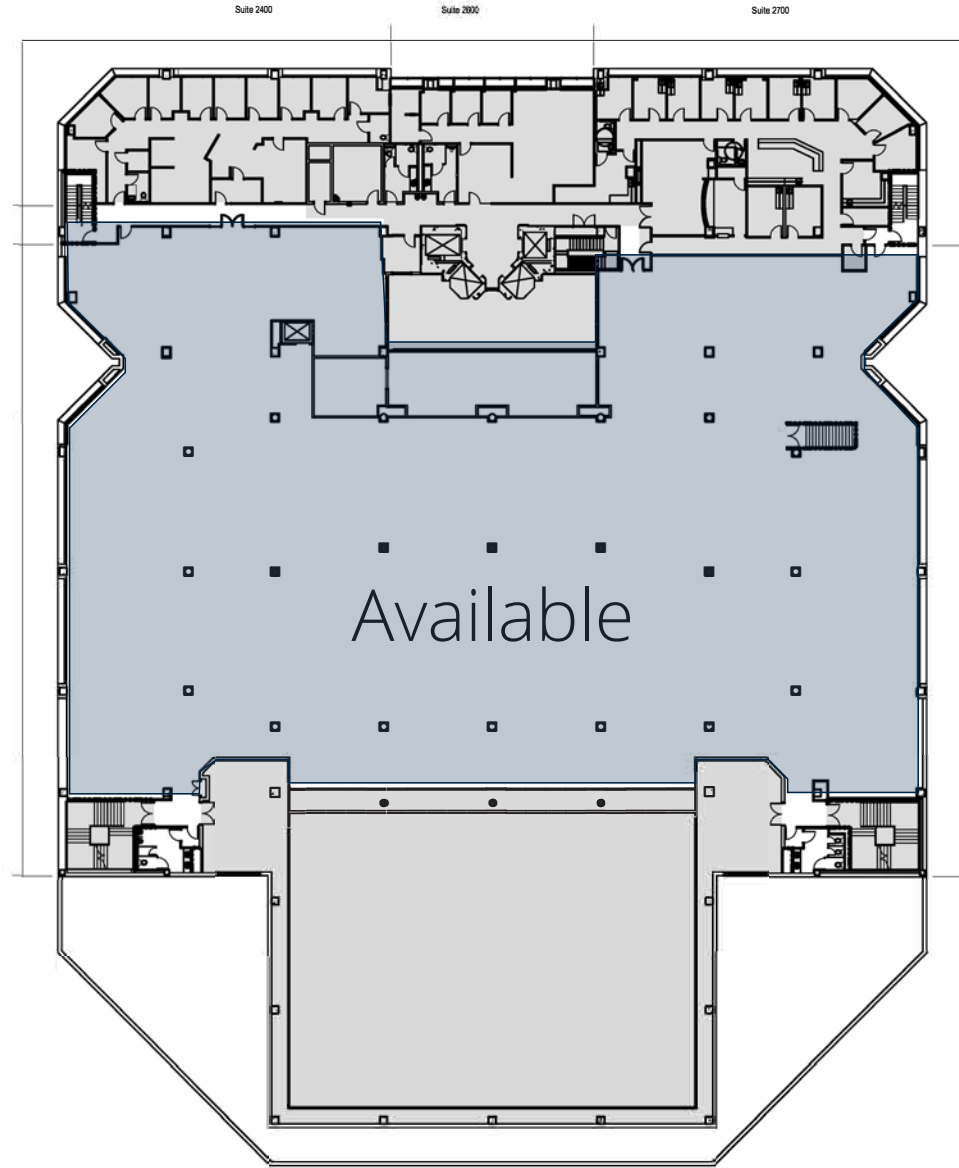
MOVE-IN READY SPEC SUITES

SUITE 7500

3,030 RSF Available



SUPER-SIZED FLOORPLATE



2ND FLOOR
36,967 RSF Available



ABOUT THE CAMPUS

5

Minutes from
Deep Ellum

7

Minutes from
Downtown Dallas

8

Minutes from
Uptown

- + 20 minute drive to Love Field Airport (DAL)
- + 30 minute drive to DFW International Airport (DFW)
- + No hassle, convenient access to six hospitals on campus
- + Surrounded by a wide variety of restaurants and bars



ABOUT THE OWNER



Healthcare Realty is a publicly-traded Real Estate Investment Trust (REIT) that focuses on owning, managing, acquiring and developing outpatient medical facilities throughout the United States. As the first REIT to specialize in medical office buildings, the Company has built a well-regarded medical real estate portfolio affiliated with market-leading healthcare systems. As of June 30, 2020, the Company owned 210 real estate properties in 24 states totaling 15.5 million square feet and was valued at approximately \$5.5 billion.

www.healthcarerealty.com

With seven medical office buildings on the Baylor Dallas Campus, Healthcare Realty is your go-to source for medical office space.

BAYLOR
HILLCREST
BUILDING
BORNEO
FLORIAN



BARNETT AND
WADLEY TOWER

3600 Gaston Ave, Dallas, TX 75246



WORTH STREET
TOWER

3409 Worth Street, Dallas, TX 75246



BAYLOR MEDICAL
PAVILION

3900 Junius St, Dallas, TX 75246



4004 WORTH
STREET

4004 Worth St, Dallas, TX 75246

411
NORTH
WASHINGTON

CHRIS LIPSCOMB

214.237.5022

chris.lipscomb@transwestern.com

LANEY DELIN

214.237.5020

laney.delin@transwestern.com

COLLIN BURWINKEL

972.774.2531

collin.burwinkel@transwestern.com