

FOR SALE

DEVELOPMENT SITE

±7.65 ACRES

140 DOVER ROAD

Millis, MA



PROPERTY FEATURES

CBRE, Inc. is pleased to offer for sale 140 Dover Road, Millis, Massachusetts. The property is located off Main Street, Route 109 and in proximity to Interstate 95 and 495.

+ Land Area:

- ±7.65 acres
- Map 53 Lot 6

+ Zone:

- R-S

+ Potential Uses, with zoning change:

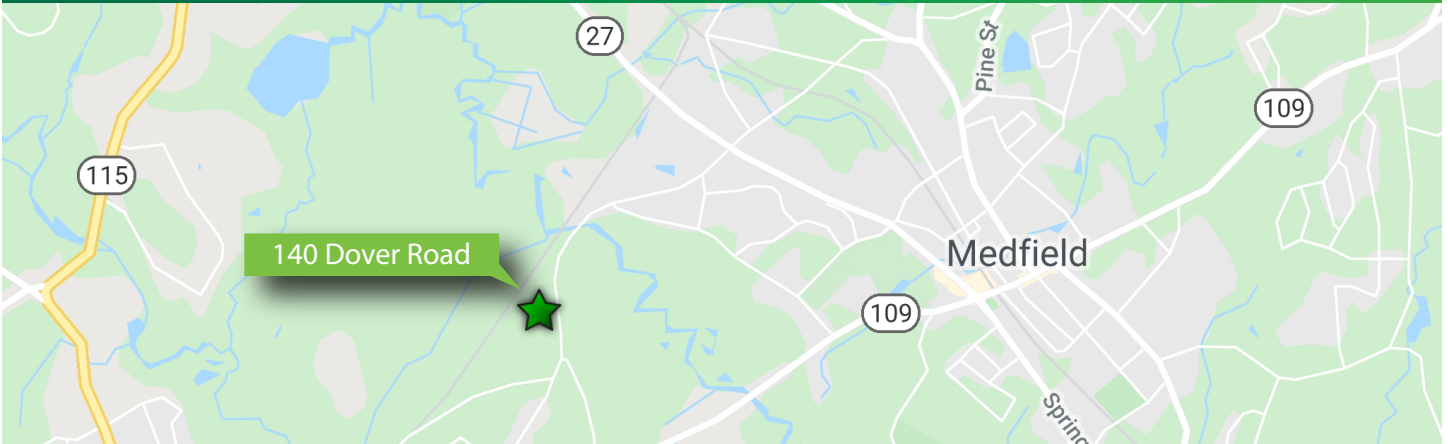
- Office
- Industrial
- Parking
- Solar
- No residential developments

www.cbre.us/providence

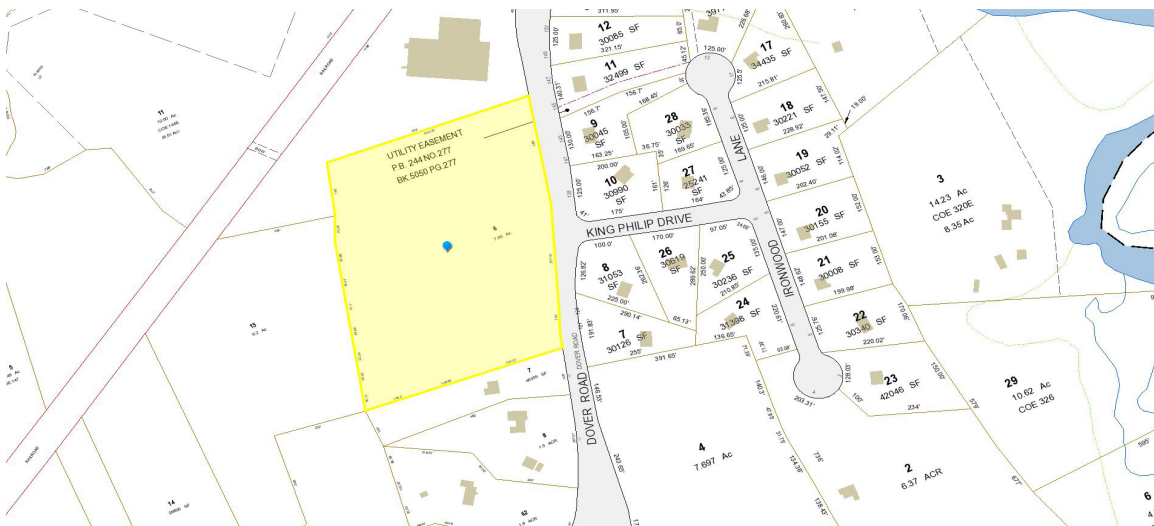
CBRE

±7.65 ACRES DEVELOPMENT SITE

FOR SALE
140 DOVER ROAD
Millis, MA



PLAT MAP



CONTACT US

DAN CREGAN

Vice President
+1 508 493 6677
dan.cregan@cbre.com

© 2020 CBRE, Inc. All rights reserved. This information has been obtained from sources believed reliable, but has not been verified for accuracy or completeness. You should conduct a careful, independent investigation of the property and verify all information. Any reliance on this information is solely at your own risk. CBRE and the CBRE logo are service marks of CBRE, Inc. All other marks displayed on this document are the property of their respective owners. Photos herein are the property of their respective owners. Use of these images without the express written consent of the owner is prohibited.

www.cbre.us/providence

CBRE