

# COUNTRY CLUB CENTRE

SWC Watt Avenue & El Camino Avenue - Sacramento, CA

A PROUD MEMBER OF  
**CHAIN LINKS**  
RETAIL ADVISORS



**FIRST COSTCO BUSINESS CENTER IN SACRAMENTO!**



**TOURMALINE CAPITAL**

Kevin Soares  
Executive Vice President  
CA DRE #01291491  
ksoares@GallelliRE.com

Jeff Hagan  
Senior Vice President  
CA DRE #01494218  
jhagan@GallelliRE.com

Gallelli Real Estate  
3005 Douglas Blvd., Suite 200  
Roseville, CA 95661  
P 916 772 1700  
www.GallelliRE.com  
Gary B. Gallelli, Broker



Licensed as Real Estate Salespersons by the CA DRE. The information contained herein has been obtained from sources we deem reliable. While we have no reason to doubt its accuracy, we do not guarantee it.  
© Gallelli Real Estate. All Rights Reserved.



# COUNTRY CLUB CENTRE

## PROPERTY HIGHLIGHTS & DEMOGRAPHICS

A PROUD MEMBER OF  
**CHAIN LINKS**  
RETAIL ADVISORS

**location:** SWC Watt Avenue and El Camino Avenue  
Sacramento, CA

**anchor tenants:** Costco Business Center

**notable tenants in close proximity:** Winco, Cinema West, Planet Fitness, Raley's

**shopping center GLA:** ±370,753 Square Feet (GLA)

**availability:** ±15,802 - 29,120 SF Jr Anchor Space  
±1,062 - ±7,957 SF Shop & Pad Space  
±4,153 SF 2nd Gen Restaurant Space  
±2,509 SF 2nd Gen Restaurant Space



### 2023 total population

1-mile	17,910
3-mile	142,494
5-mile	381,406



### 2023 daytime population

1-mile	21,352
3-mile	156,154
5-mile	400,064



### 2023 total employees

1-mile	10,274
3-mile	69,206
5-mile	165,382



### 2023 total households

1-mile	7,642
3-mile	57,517
5-mile	145,933



### 2023 average HH income

1-mile	\$86,076
3-mile	\$97,048
5-mile	\$95,760

### traffic counts

Watt Ave (south of El Camino Ave)	50,030
Watt Ave (north of El Camino Ave)	48,058
El Camino Ave (west of Watt Ave)	19,321
El Camino Ave (east of Watt Ave)	17,138



TOURMALINE CAPITAL

Kevin Soares  
Executive Vice President  
CA DRE #01291491  
ksoares@GallelliRE.com

Jeff Hagan  
Senior Vice President  
CA DRE #01494218  
jhagan@GallelliRE.com

Gallelli Real Estate  
3005 Douglas Blvd., Suite 200  
Roseville, CA 95661  
P 916 772 1700  
www.GallelliRE.com  
Gary B. Gallelli, Broker  
CA DRE #00811881





# COUNTRY CLUB CENTRE

## PROPERTY OVERVIEW

A PROUD MEMBER OF  
**CHAINLINKS**  
RETAIL ADVISORS

*Country Club Centre* is located at the southwest corner of Watt Avenue and El Camino Avenue within the Arden-Arcade retail trade area; one of the Sacramento region's densest retail hubs.

This ±370,753 square foot community center offers excellent anchor and junior opportunities and is part of nearly 3.5 million square feet of commercial retail space within a 3-mile radius.

*Country Club Centre* is situated at a high volume traffic intersection and is visible to more than 67,200 cars per day.

Costco Business Center, the first location in the greater Sacramento MSA, opened in June 2020. In addition, the California Department of Water Resources is located directly adjacent to the center and employs approximately 125 people.

Finally, the center features a co-tenant mix which includes notable tenants such as Chipotle, Raising Cane's, Wingstop and The UPS Store.



TOURMALINE CAPITAL

Kevin Soares  
Executive Vice President  
CA DRE #01291491  
ksoares@GallelliRE.com

Jeff Hagan  
Senior Vice President  
CA DRE #01494218  
jhagan@GallelliRE.com

Gallelli Real Estate  
3005 Douglas Blvd., Suite 200  
Roseville, CA 95661  
P 916 772 1700  
www.GallelliRE.com  
Gary B. Gallelli, Broker  
CA DRE #00811881



**GALLELLI**  
REAL ESTATE

# COUNTRY CLUB CENTRE

SWC Watt Avenue & El Camino Avenue - Sacramento, CA

A proud member of  
**CHAINLINKS**  
RETAIL ADVISORS

## SITE PLAN



SUITE	TENANT	SQ. FT.
3308-100	Wingstop	1,615
3308-200	AVAILABLE (2nd Gen Restaurant Space)	2,509
3308-300	The UPS Store	1,376
3308-400	AVAILABLE	1,300
3308-500	AVAILABLE	1,136
3308-600	AVAILABLE	1,062
3360	State of CA- Dept. of Water Resources	31,716
3328-100	AVAILABLE (2nd Gen Restaurant Space)	4,153
3328-200	Supercuts	739
3328-300	Chipotle	2,200
3360	Costco Business Center	138,801
3364	AVAILABLE	1,554
3372	AVAILABLE	1,924
3376	AVAILABLE	4,115
3400	AVAILABLE	29,120
3422	AVAILABLE	15,802
3430	AVAILABLE	7,957
3460-A	New Anchor Tenant (COMING SOON!)	41,516
3460-B	AVAILABLE (proposed)	16,000
3464	AVAILABLE	24,490
3468	AVAILABLE	20,760
3472	AVAILABLE	19,500
3338	Bank of America (Lease Contingent)	3,055
3340	Raising Cane's	3,521

For leasing information,  
please contact:

**Kevin Soares**  
CA DRE #01291491  
ksoares@GallelliRE.com

**Jeff Hagan**  
CA DRE #01494218  
jhagan@GallelliRE.com

**Gallelli Real Estate**  
3005 Douglas Blvd., Suite 200  
Roseville, CA 95661  
P 916 772 1700  
www.GallelliRE.com  
Gary B. Gallelli, Broker  
CA DRE #00811881



# COUNTRY CLUB CENTRE

## INTERSECTION AERIAL WITH SITE PLAN OVERLAY

A PROUD MEMBER OF  
**CHAINLINKS**  
RETAIL ADVISORS



TOURMALINE CAPITAL

Kevin Soares  
Executive Vice President  
CA DRE #01291491  
ksoares@GallellIRE.com

Jeff Hagan  
Senior Vice President  
CA DRE #01494218  
jhagan@GallellIRE.com

Gallelli Real Estate  
3005 Douglas Blvd., Suite 200  
Roseville, CA 95661  
P 916 772 1700  
www.GallellIRE.com  
Gary B. Gallelli, Broker  
CA DRE #00811881



Licensed as Real Estate Salespersons by the CA DRE. The information contained herein has been obtained from sources we deem reliable. While we have no reason to doubt its accuracy, we do not guarantee it.  
© Gallelli Real Estate. All Rights Reserved.





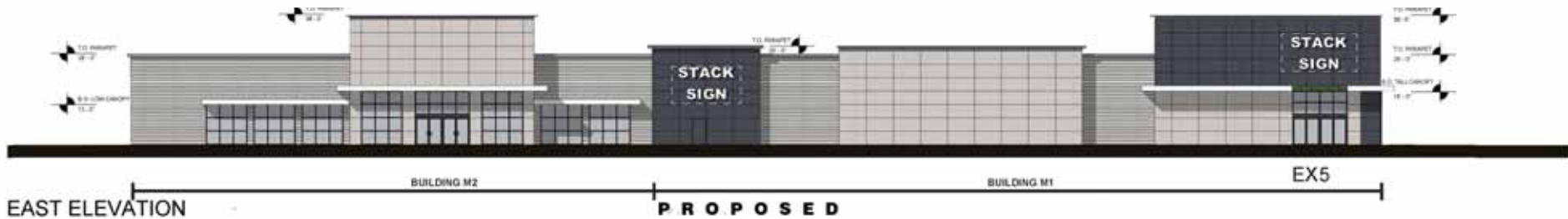
# COUNTRY CLUB CENTRE

## SHOPPING CENTER PROPOSED ELEVATIONS

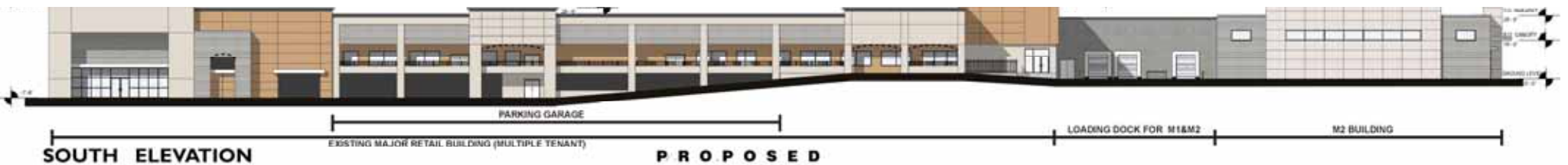
A PROUD MEMBER OF  
**CHAIN LINKS**  
RETAIL ADVISORS



1 NORTH ELEVATION  
1/16" = 1'-0"



2 EAST ELEVATION  
1/16" = 1'-0"



4 SOUTH ELEVATION  
1/16" = 1'-0"



Kevin Soares  
Executive Vice President  
CA DRE #01291491  
ksoares@GallelliRE.com

Jeff Hagan  
Senior Vice President  
CA DRE #01494218  
jhagan@GallelliRE.com

Gallelli Real Estate  
3005 Douglas Blvd., Suite 200  
Roseville, CA 95661  
P 916 772 1700  
www.GallelliRE.com  
Gary B. Gallelli, Broker  
CA DRE #00811881





# COUNTRY CLUB CENTRE

## IMMEDIATE VICINITY RETAIL AERIAL

A PROUD MEMBER OF  
**CHAIN LINKS**  
RETAIL ADVISORS



**TOURMALINE CAPITAL**

Kevin Soares  
Executive Vice President  
CA DRE #01291491  
ksoares@GallellIRE.com

Jeff Hagan  
Senior Vice President  
CA DRE #01494218  
jhagan@GallellIRE.com

Gallelli Real Estate  
3005 Douglas Blvd., Suite 200  
Roseville, CA 95661  
P 916 772 1700  
www.GallellIRE.com  
Gary B. Gallelli, Broker  
CA DRE #00811881



Licensed as Real Estate Salespersons by the CA DRE. The information contained herein has been obtained from sources we deem reliable. While we have no reason to doubt its accuracy, we do not guarantee it.  
© Gallelli Real Estate. All Rights Reserved.

