

**SIGN LEGEND**

SIGN NO.	NO.-DOT NO. OR MUTED NO.	LEGEND
A	R1-1	STOP 30"
B1	R3-50J	[Symbol]
B2	R3-50R	[Symbol]
C	XX-XXXX	[Symbol]
D	XX-XXXXX	[Symbol]
E1	R5-1	[Symbol]
E2	R6-10J	[Symbol]
F	R6-10R	[Symbol]
G	W1-2	[Symbol]

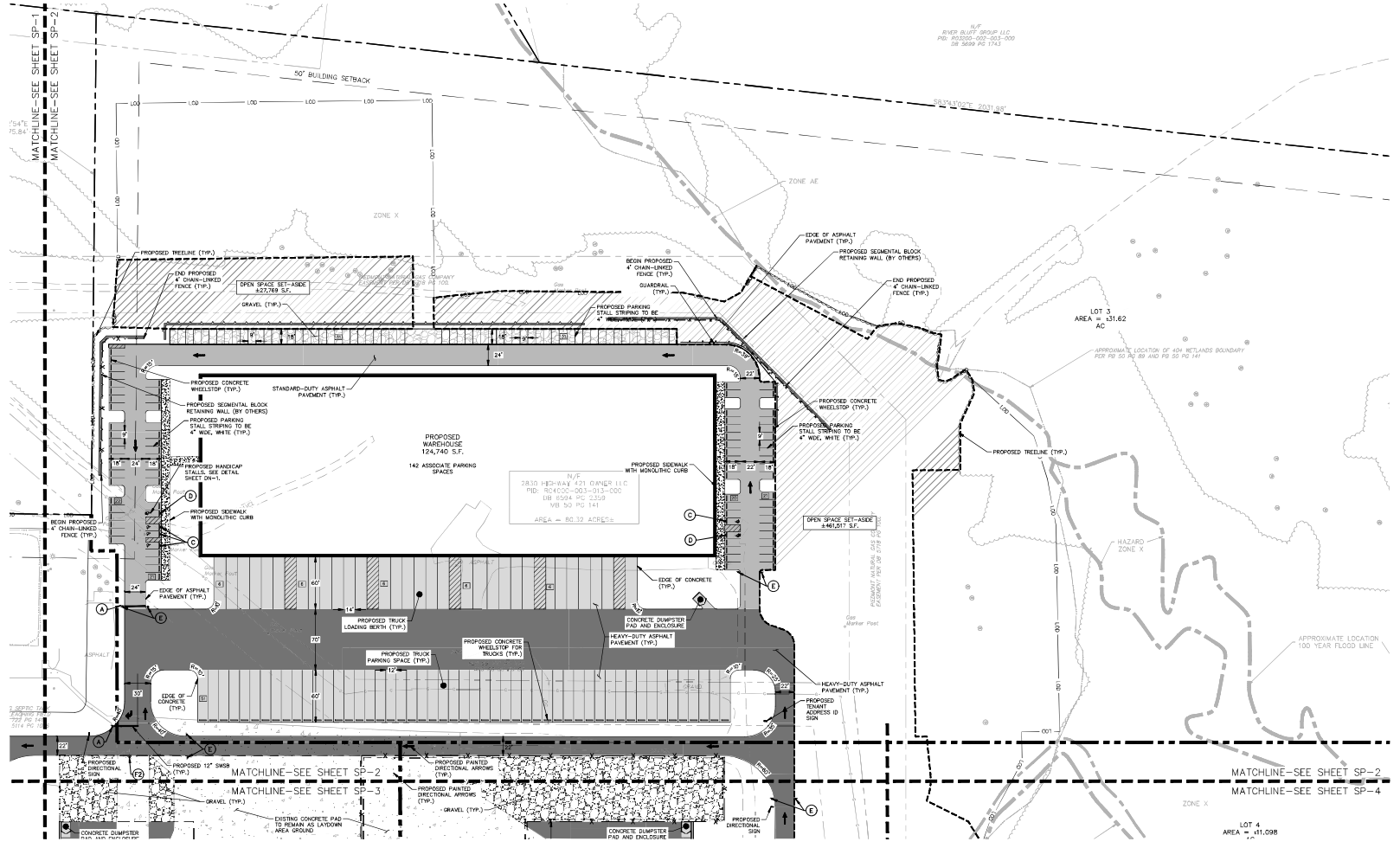
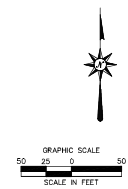
NOTE: HANDCAPPED SIGNS TO BE INSTALLED IN PIPE BOLLARDS (SEE DETAIL). ALL HANDCAP SIGNS TO CONFORM TO LATEST BUILDING CODE.

**SITE PLAN LEGEND**

[Symbol]	PROPERTY LINE
[Symbol]	LIMIT OF DISTURBANCE
[Symbol]	100'
[Symbol]	SANCTUARY LINE
[Symbol]	BUILDING SETBACK
[Symbol]	PROVIDE AND INSTALL CONCRETE SIDEWALK. SEE NC DOT SIDEWALK DETAIL ON SHEET DN-2
[Symbol]	PROVIDE AND INSTALL HEAVY-DUTY CONCRETE. SEE DETAIL ON SHEET DN-2
[Symbol]	PROVIDE AND INSTALL FULL DEPTH STANDARD DUTY ASPHALT PAVEMENT STRUCTURE. SEE DETAIL ON SHEET DN-2
[Symbol]	PROVIDE AND INSTALL FULL DEPTH HEAVY-DUTY ASPHALT PAVEMENT STRUCTURE. SEE DETAIL ON SHEET DN-2
[Symbol]	PROVIDE AND INSTALL GRAVEL
[Symbol]	OPEN SPACE SET-ASIDE AREA
[Symbol]	PROVIDE AND INSTALL SIGN
[Symbol]	CURB OR PAVEMENT STRIPING RADIUS
R=20'	

**NOTES**

1. ALL RADII TO BE 3' UNLESS OTHERWISE NOTED.



**THE YARD INDUSTRIAL PARK**  
 2830 US HWY 421  
 WILMINGTON, NORTH CAROLINA 28401

---

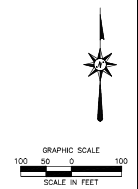
**SP-2**

**GRADING AND DRAINAGE LEGEND**

PROPERTY LINE	---	ELECTRIC LINE	---
LIMIT OF DISTURBANCE LINE AND CONTRACT LIMIT LINE	---	ELECTRIC AND TELECOMMUNICATIONS LINES	---
STORM LINE	---	GAS LINE	---
CATCH BASIN	⊠	WATER LINE	---
YARD INLET	⊠	SANITARY SEWER LINE	---
STORM MANHOLE	⊙	SANITARY SEWER EDGE MAIN	---
FLARED END	⊙	OVERHEAD LINE	---
END WALL OR HEADWALL	⊙	TRANSFORMER	⊠
OUTLET CONTROL STRUCTURE	⊙	HYDRANT	⊙
PROPOSED CONTOUR LINE	---	UTILITY POLE	⊙
PROPOSED SPOT GRADE	x	SANITARY SYSTEM MANHOLE	⊙
ABBREVIATIONS		SANITARY/STORM CLEANDOUT	⊙
- TC=TOP OF CURB		WATER VALVE	⊙
- BC=BOTTOM OF CURB		GATE VALVE	⊙
- TW=TOP OF WALL		POST INDICATOR VALVE	⊙
- BW=BOTTOM OF WALL			
PROPOSED SURFACE SLOPE	1/4"		

THERE ARE NO REGULATED TREES WITHIN THE PROJECT LIMIT OF DISTURBANCE

EXISTING BUILT UPON AREA = 20.40 AC  
PROPOSED BUILT UPON AREA = 34.15 AC



3420 Gungahway  
Charlotte, NC 28217  
703.500.0000  
NC Engineering Firm  
Lic. # 4000

12/29/2023

**THE YARD INDUSTRIAL PARK**  
2830 US HWY 421  
WILMINGTON, NORTH CAROLINA 28401

DESIGNED BY	A.A.K.
CHECKED BY	A.A.K.
DATE	11/16/23
PROJECT NO.	2301001
DATE	06/20/2023
SCALE	AS SHOWN

**GD-0**  
OVERALL GRADING AND DRAINAGE PLAN

