

# Z SEVEN

1222 HARRISON STREET

**TCP**  
**TOUCHSTONE**  
COMMERCIAL PARTNERS

FOR LEASE | PDR / OFFICE SPACES IN HEART OF SOMA



WWW.TCPRE.COM

**ZACH HAUPERT** zhaupert@tcpre.com  
D 415.539.1121 | C 415.812.1219

**MICHAEL SANBERG** msanberg@tcpre.com  
D 415.539.1103 | C 415.697.6088

**TREVOR GUDIM** trevor@tcpre.com  
D 415.539.1122 | C 858.922.2632

# SEVEN

1222 HARRISON STREET

## PROPERTY SUMMARY

### ADDRESS

1222 Harrison Street, San Francisco, CA 94103

### AVAILABLE SPACE

Unit 2	+/- 335 Square Feet
Unit 7	+/- 596 Square Feet
Unit 8	+/- 742 Square Feet
Unit 9	+/- 298 Square Feet
Unit 10	+/- 370 Square Feet
Unit 12	+/- 641 Square Feet
Unit 13	+/- 355 Square Feet
Unit 15	+/- 263 Square Feet
Unit 16	+/- 787 Square Feet
<b>TOTAL</b>	<b>+/- 4,387 Square Feet</b>

*\*Units Can be Leased Together or Separately*

### RENTAL RATE

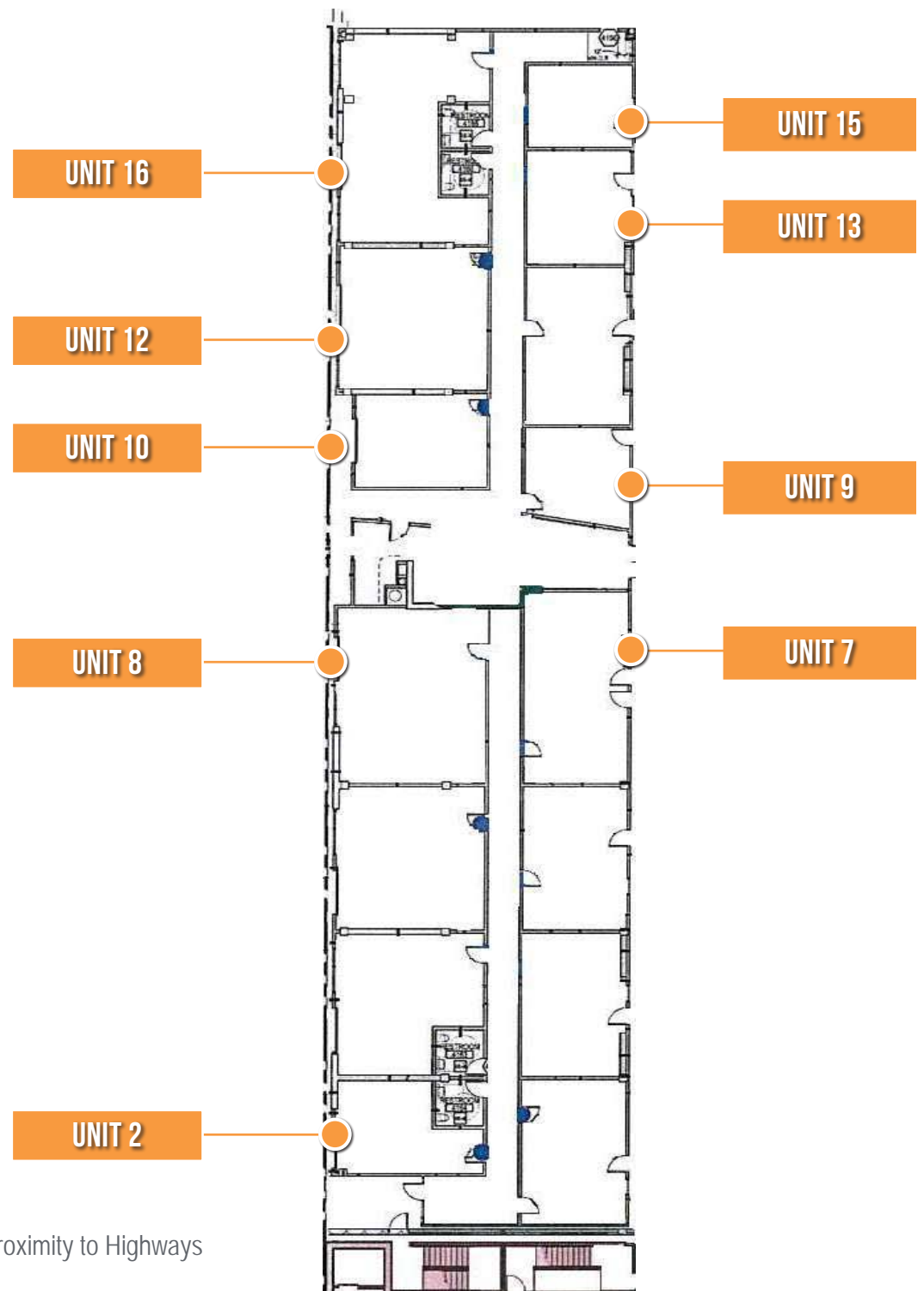
Negotiable

### AVAILABLE

Immediately

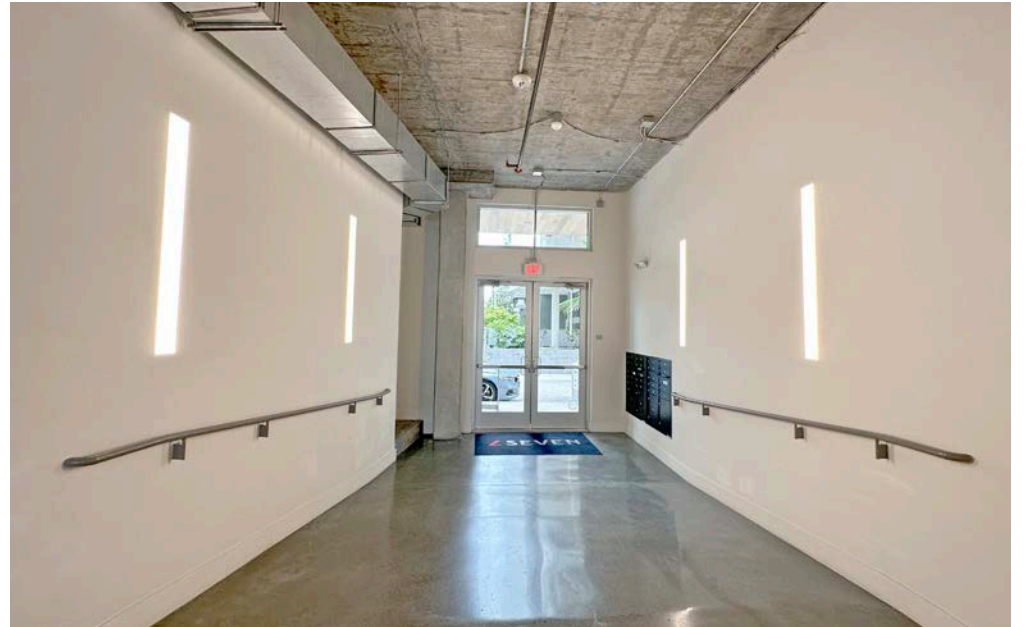
## BUILDING ATTRIBUTES

- + Move-In Ready Centrally Located Flex Units in Heart of SOMA
- + Drive-In Roll-Up Door Units Available
- + Fully Sprinklered
- + Access to Shared Amenities Including Gym
- + Walkable To Bart, Caltrain, MUNI, Showplace Square, and Close Proximity to Highways



# SEVEN

1222 HARRISON STREET



# SEVEN

1222 HARRISON STREET

## Site Plan

*\*All Units are on Ground Floor*



# SEVEN

1222 HARRISON STREET

## LOCATION OVERVIEW

*Desirable South of Market location, walkable to many amenities and to surrounding neighborhoods.*



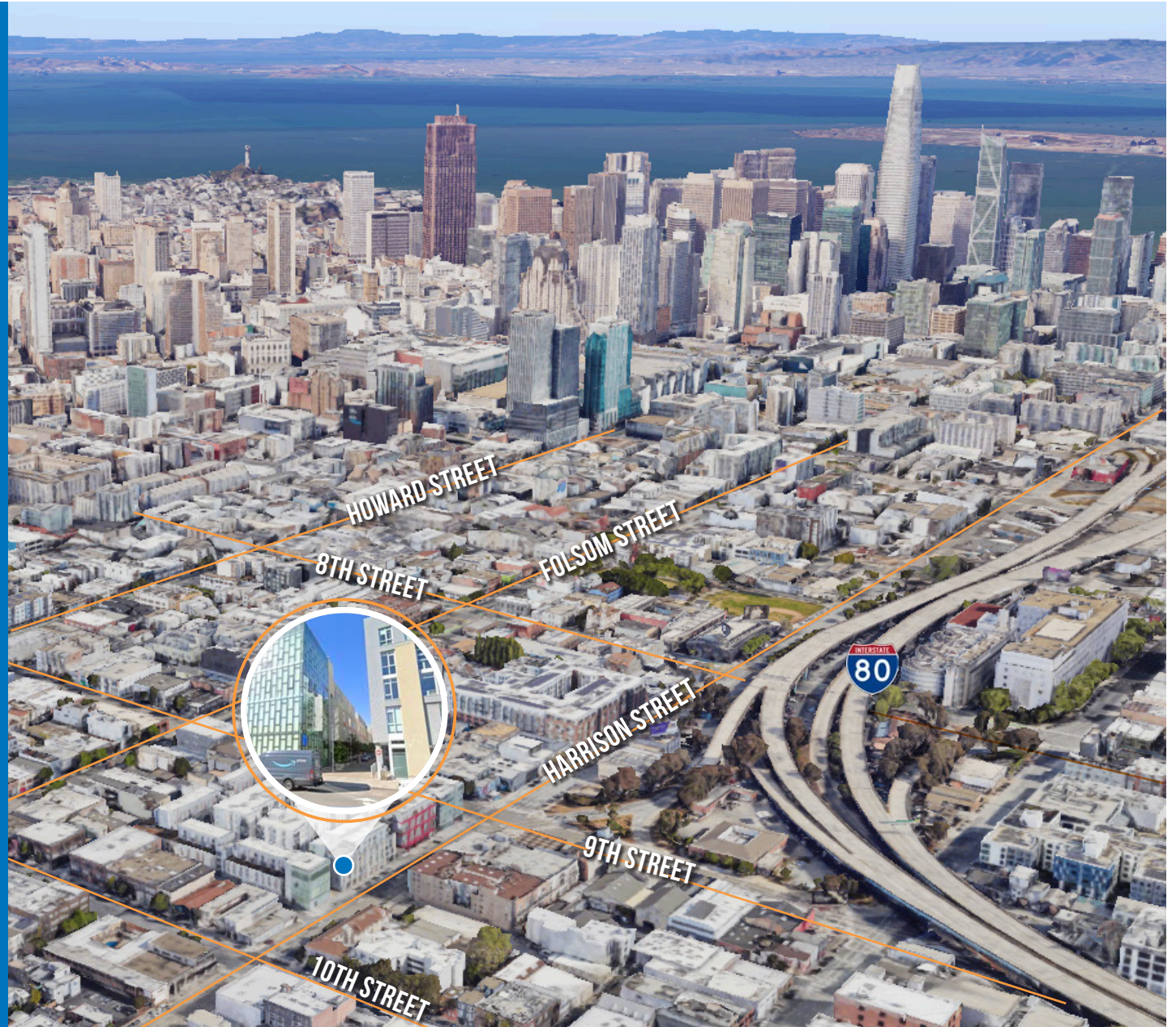
**05 MIN** to 3rd St. Caltrain  
**13 MIN** to Civic Center Bart  
**15 MIN** to Caltrain Station



**03 MIN** to SOMA  
**10 MIN** to Union Square  
**15 MIN** to Financial District



**05 MIN** to 80 On-Ramp  
**05 MIN** to 101 On-Ramp  
**08 MIN** to 280 On-Ramp

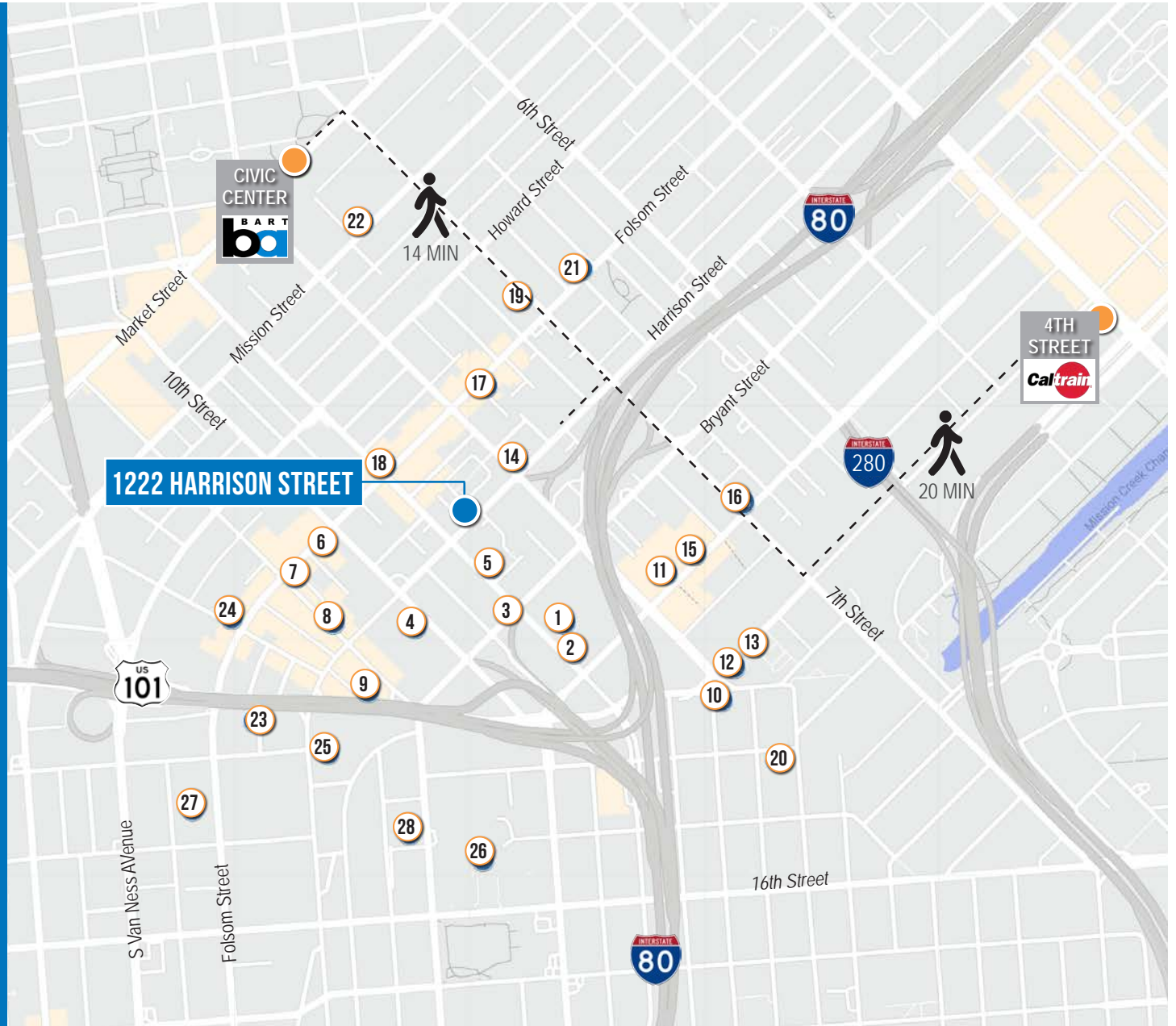


# SEVEN

## 1222 HARRISON STREET

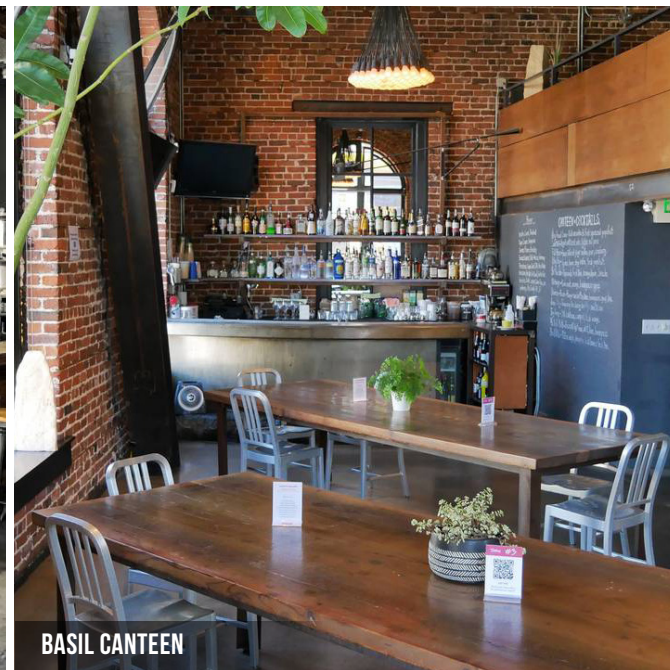
### NEARBY AMENITIES

- 1..... Trader Joe's
- 2..... Peet's Coffee
- 3..... Vulins Taproom Wine Restaurant
- 4..... Costco Wholesale
- 5..... Clayroom SoMa
- 6..... Sextant Coffee Roasters
- 7..... Basil Canteen
- 8..... DNA Pizza
- 9..... Southern Accent Food Truck
- 10..... Niku Steakhouse
- 11..... Bellota
- 12..... Starbucks
- 13..... Okane
- 14..... AK Subs
- 15..... REI
- 16..... Mars Bar & Restaurant
- 17..... Basil
- 18..... Azúcar Lounge
- 19..... Sightglass Coffee
- 20..... Showplace East
- 21..... Deli Board
- 22..... City Beer Store
- 23..... Rainbow Grocery
- 24..... The Willows
- 25..... Best Buy
- 26..... Safeway
- 27..... Foods Co.
- 28..... Sports Basement Bryant Street



# SEVEN

1222 HARRISON STREET



# SEVEN

1222 HARRISON STREET



Corp. Lic. 01112906  
www.tcppe.com

## ZACH HAUPERT

D 415.539.1121 C 415.812.1219  
zhaupert@tcppe.com DRE # 01822907

## MICHAEL SANBERG

D 415.539.1103 C 415.697.6088  
msanberg@tcppe.com DRE # 01930041

## TREVOR GUDIM

D 415.539.1122 C 858.922.2632  
trevor@tcppe.com DRE # 01979980

This document has been prepared by Touchstone Commercial Partners for advertising and general information only. Touchstone Commercial Partners makes no guarantees, representations or warranties of any kind, expressed or implied, regarding the information including, but not limited to, warranties of content, accuracy and reliability. Any interested party should undertake their own inquiries as to the accuracy of the information. Touchstone Commercial Partners excludes unequivocally all inferred or implied terms, conditions and warranties arising out of this document and excludes all liability for loss and damages arising there from. This publication is the copyrighted property of Touchstone Commercial Partners and/or its licensor(s). ©2024. All rights reserved.