



# 11151 SUN CENTER DRIVE

*±1,385 SF & ±1,464 SF Spaces  
Available in Prospect Park*

RANCHO CORDOVA, CA





## PROJECT HIGHLIGHTS

Offered at \$1.35/SF, full serviced

**5% Commission to procuring agent**

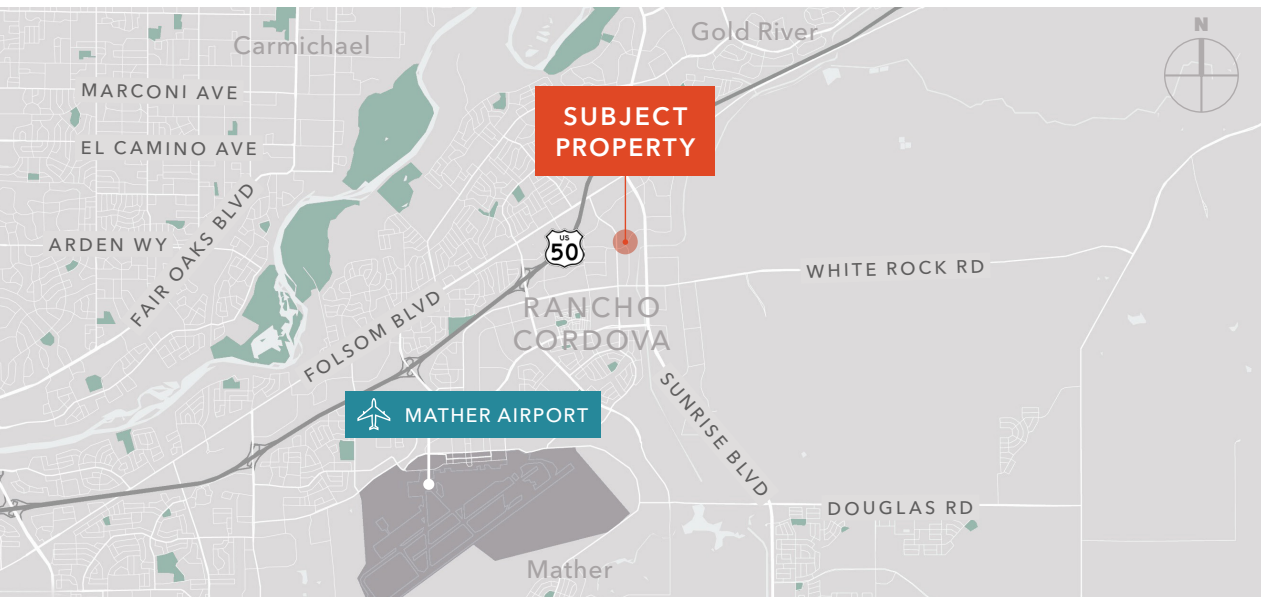
Central & convenient location

Near Highway 50, restaurants, shopping and hotels

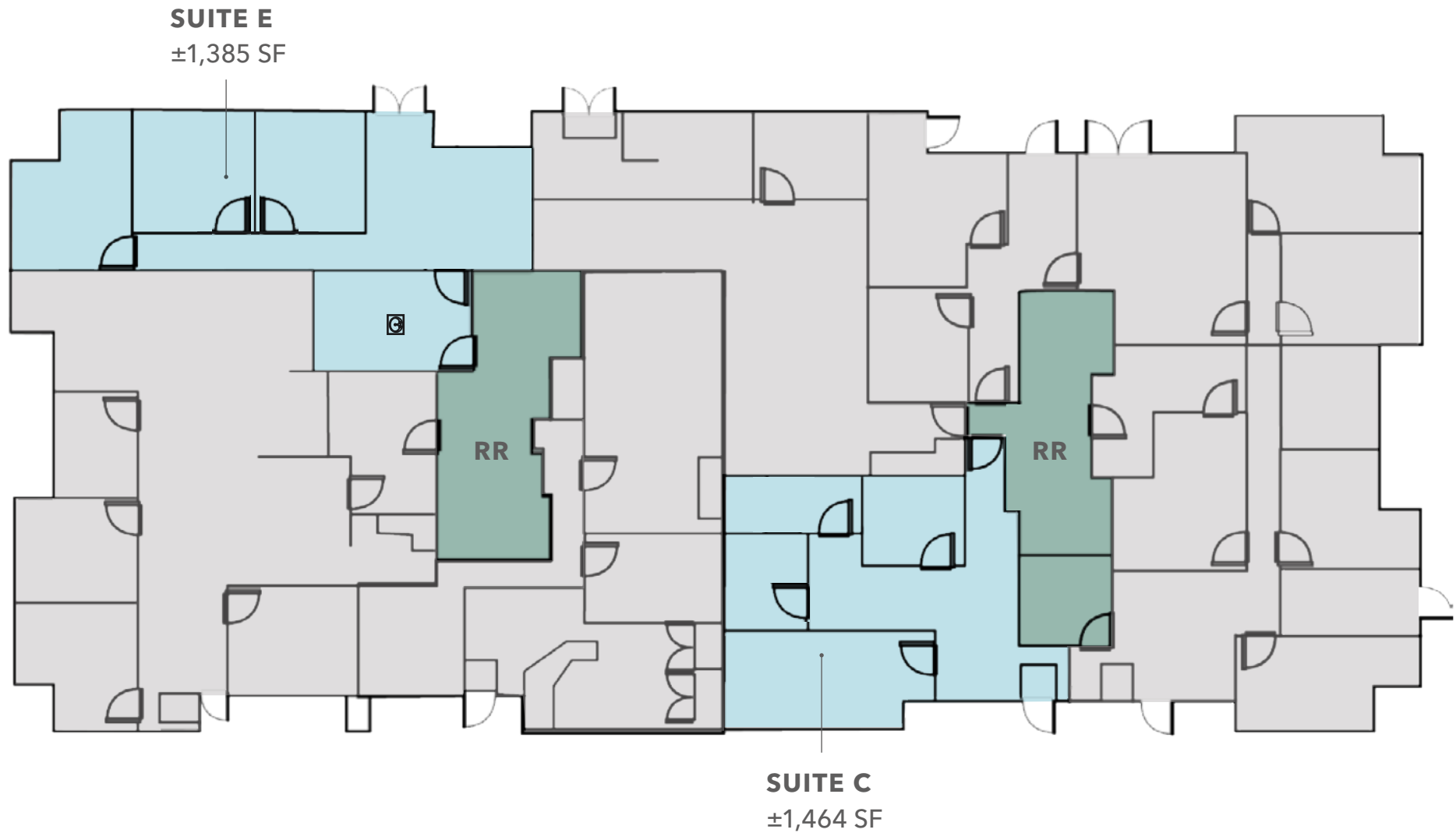
Free parking available at 5.5 spaced per 1,000 SF leased

Single story building with excellent window line & professional environment

Well designed suites ready for occupancy



## FLOOR PLAN



FLOOR PLAN NOT TO SCALE



11151 SUN CENTER DR



FOR LEASE

KIDDER MATHEWS





*Exclusively listed by*

**TOM CONWELL**  
916.751.3626  
tom.conwell@kidder.com  
**LIC N° 01394155**

**KIDDER.COM**