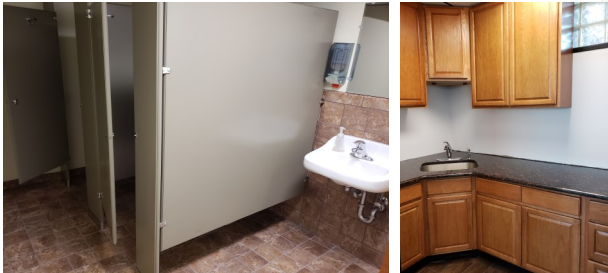
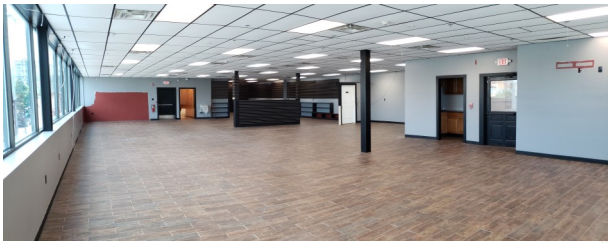
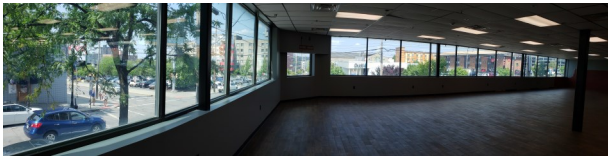
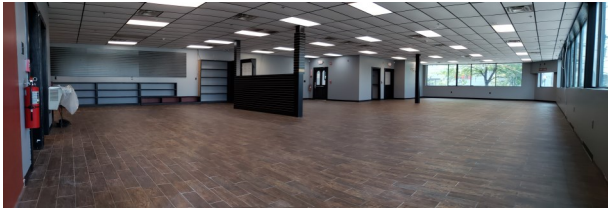


# 701 S. CROUSE AVE. SYRACUSE, NY 13210

## - 4,800SF AVAILABLE -



- ◆ +/- 15,000 SF Multi-Tenant Building
- ◆ Located at Signalized Corner of S. Crouse Ave. & E. Adams St.
- ◆ Neighboring Syracuse University & Multiple Hospitals/Medical Facilities
- ◆ Competitive Rental Structure
- ◆ Panoramic Windows Provide Wrap-Around Views of the City
- ◆ Surrounded by On-Street, Surface & Garage Parking Facilities
- ◆ Existing Build-Out in Immaculate Condition



David M. Aiello, Licensed Real Estate Broker  
DD: 315-575-5707  
E: David@InvictaREA.com



Although the information furnished regarding property for sale, rental or financing is from sources deemed reliable, such information has not been verified and no express representation is made nor is any to be implied as to the accuracy thereof. It is submitted subject to errors, omissions, change of price, rental or other conditions, prior sale, lease or financing, or withdrawal without notice.