

FOR SALE  
49.15 TOTAL ACRES



# Chalet Village Property

Build the Next Iconic Mountain Community in Dillard, Georgia

*Additional information + survey available upon request.*



## Property Description

Seaport Commercial presents a rare, once-in-a-lifetime opportunity to develop a private mountain community with **expansive long-range** views in the heart of North Georgia. With established **roads, power, water**, and ample acreage already in place, this property offers a true blank canvas to create a wellness retreat, luxury enclave, or thoughtfully designed 55+ community. Ideally located on Old Dillard Road, just minutes from Highlands and Cashiers, NC, this exceptional setting is ready for a **bold mountain vision**.

Expansive  
Mountain Views

Existing Built-In  
Roadways

Existing Power  
and Water Lines

Investment  
Opportunity

Ideally Located in  
Dillard, GA

Michael Shaw | President | Seaport Commercial  
404.408.8843 + [mshaw@seaportcre.com](mailto:mshaw@seaportcre.com)

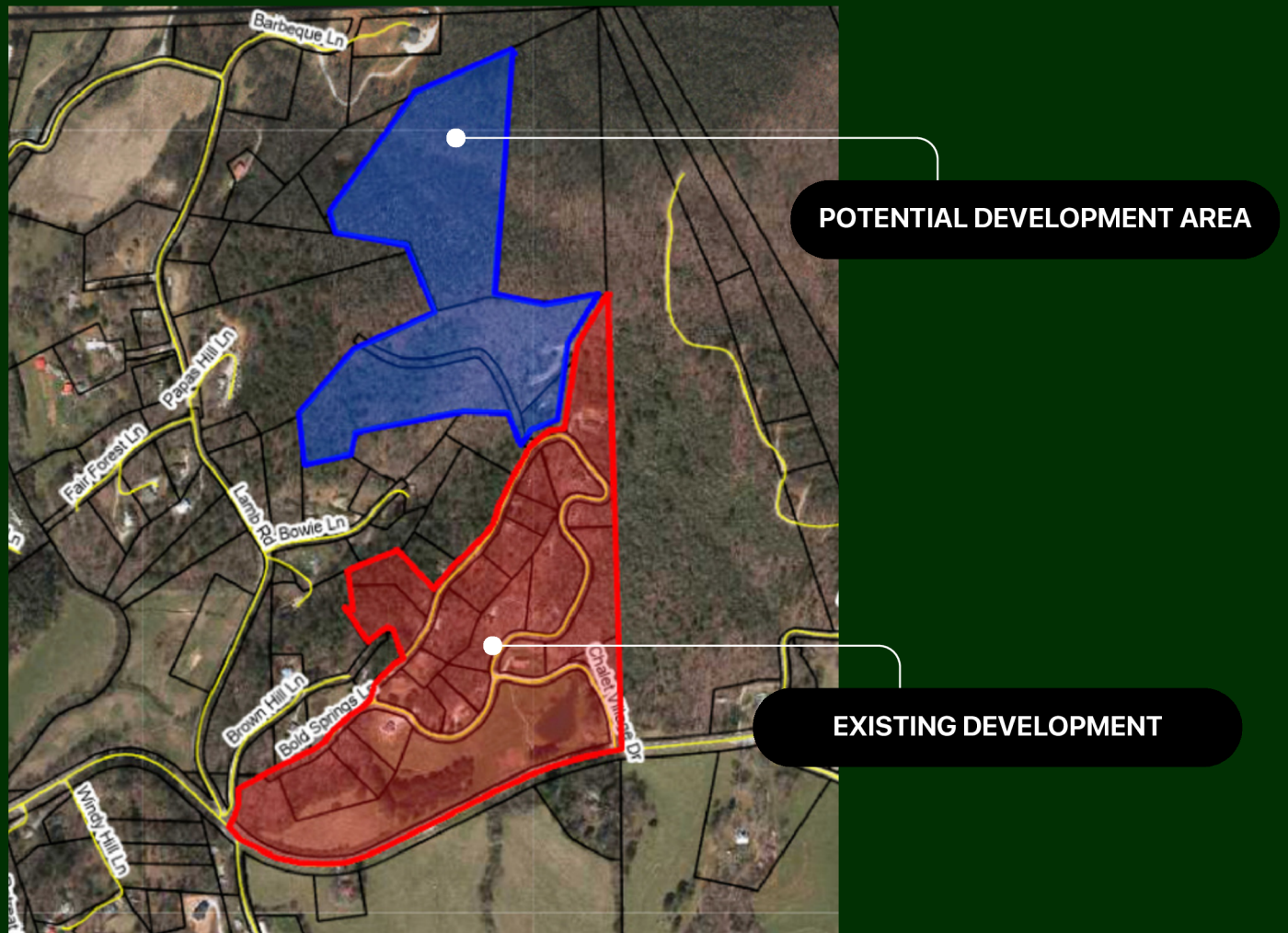
**FOR SALE**

**49.15 TOTAL ACRES**



# Development Area Potential

Chalet Village Property



This property is built for development. Featuring expansive long-range mountain views, existing roads, power, water, and significant acreage, it offers a clear path to creating a fully realized mountain community. The site supports multiple development concepts including a master-planned luxury enclave, wellness or retreat destination, or a purpose-built 55+ community. Located on Old Dillard Road with direct access toward Highlands and Cashiers, NC, the infrastructure, scale, and setting are already in place to execute a high-impact mountain project.

Michael Shaw | President | Seaport Commercial  
404.408.8843 + [mshaw@seaportcre.com](mailto:mshaw@seaportcre.com)



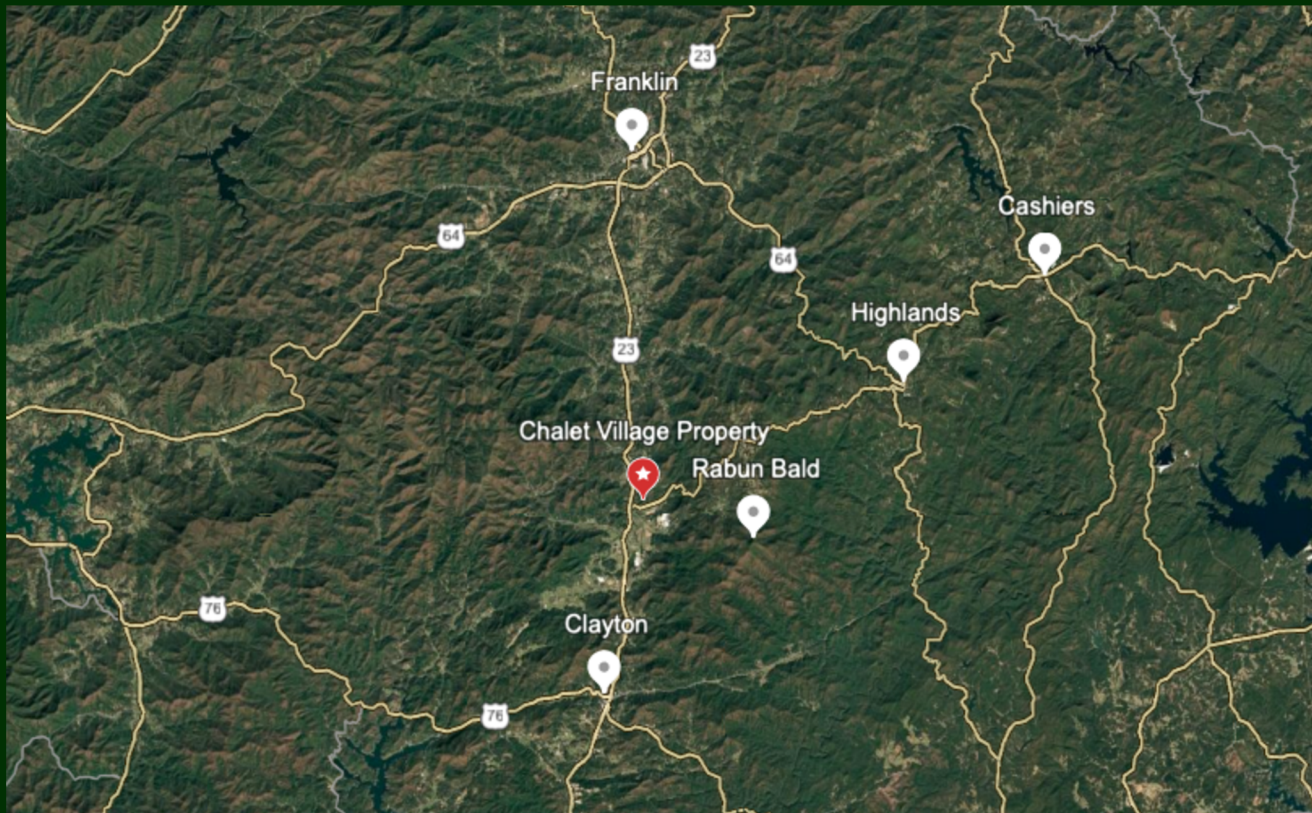
FOR SALE

49.15 TOTAL ACRES



# Prime Location

Chalet Village Property



11 Miles

Highlands  
North Carolina

7 Miles

Clayton  
Georgia

5 Miles

Rabun Bald  
Georgia

17 Miles

Tallulah Falls  
Georgia

18 Miles

Cashiers  
North Carolina

13 Miles

Franklin  
North Carolina

This Chalet Village property sits in a prime North Georgia location, just 25 minutes from Highlands, NC, and 15 minutes from downtown Clayton, placing you between two of the region's most desirable mountain destinations. Enjoy close proximity to charming shops, renowned restaurants, wineries, hiking, waterfalls, and year-round outdoor recreation—all surrounded by the natural beauty of the Blue Ridge Mountains. This unbeatable location offers the perfect blend of convenience, serenity, and mountain lifestyle access.

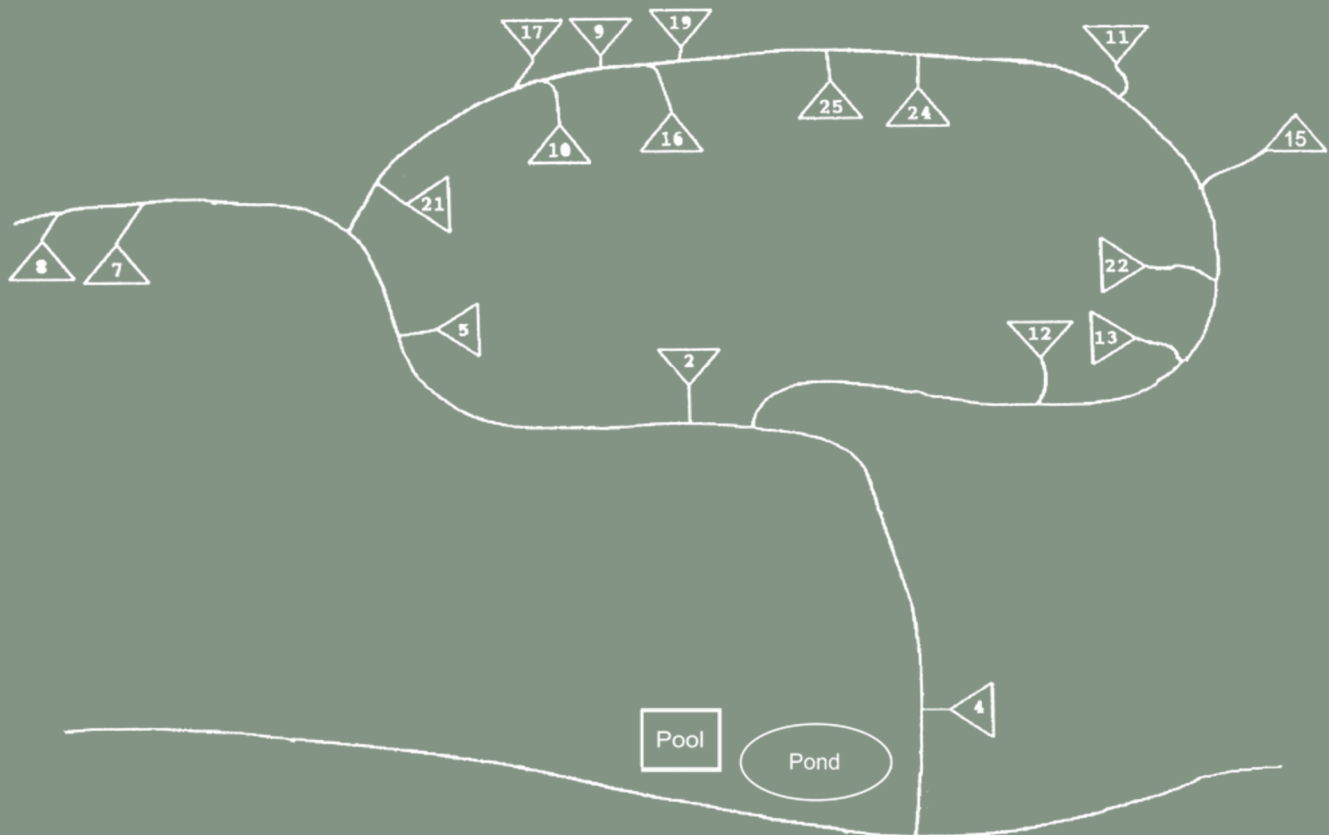
Michael Shaw | President | Seaport Commercial  
404.408.8843 + [mshaw@seaportcre.com](mailto:mshaw@seaportcre.com)

FOR SALE



# Chalet Village Layout

Chalets included in sale



This Chalet Village property offers a versatile mix of accommodations, featuring 5 two-bedroom chalets, 10 one-bedroom chalets, and 3 three-bedroom chalets. Many of the units include loft spaces, allowing for additional sleeping areas and significantly increasing guest capacity. All Chalets are equipped with stone fireplaces, and beautiful wooden beams. With this diverse layout, the property is well-suited for a range of rental needs—from couples and small families to larger groups seeking a comfortable mountain getaway.

Michael Shaw | President | Seaport Commercial  
404.408.8843 + [mshaw@seaportcre.com](mailto:mshaw@seaportcre.com)



FOR SALE



# Property Photos

3 Total Parcels | 49.15 Total Acres



Michael Shaw | President | Seaport Commercial  
404.408.8843 + [mshaw@seaportcre.com](mailto:mshaw@seaportcre.com)



FOR SALE



# Contact Us

3 Total Parcels | 49.15 Total Acres



## Contact Us

**Michael Shaw**

Commercial President

[mshaw@seaportcre.com](mailto:mshaw@seaportcre.com)

404.408.8843

**Seaport Real Estate**

Commercial Real Estate

[office@seaportrealestate.com](mailto:office@seaportrealestate.com)

912.202.2042

Michael Shaw | President | Seaport Commercial  
404.408.8843 + [mshaw@seaportcre.com](mailto:mshaw@seaportcre.com)