

PROPERTY FOR LEASE

Westridge Office Center

7011-7013 Orchard Lake Rd West Bloomfield, MI 48322



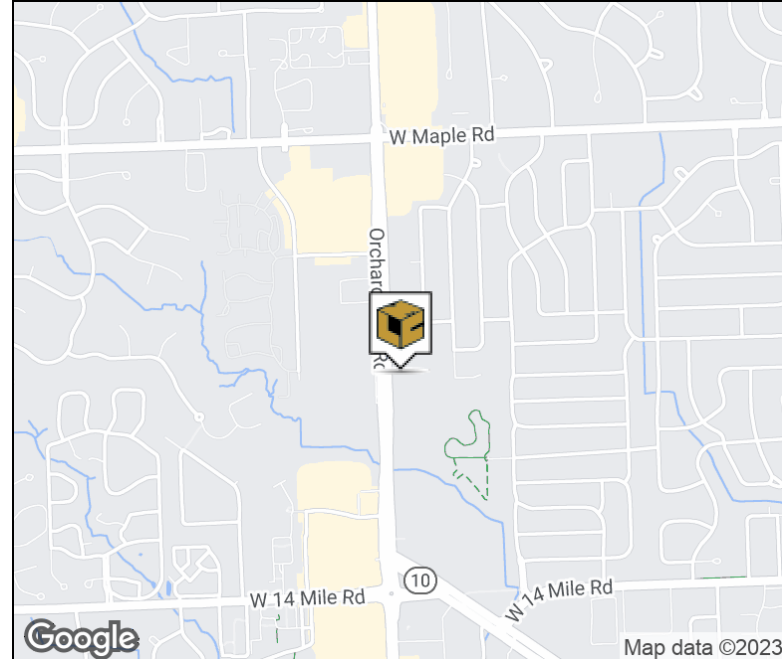
LIBERTY
PROPERTY & ASSET MANAGEMENT



WESTRIDGE OFFICE CENTER

Property Highlights

- 2-Building Office Park
- 18,412 Square Feet
- Up to 5,860 Square Feet Office Suite
- Office Suites in "Move-In" Condition
- Convenient Parking
- Double Door Access for Shipping & Receiving
- Highly Upgraded Finishes Offered
- High Visibility Orchard Lake Road Location
- Close to Fine & Casual Restaurants
- Extremely Competitive Rental Structure
- Exterior Signage Available



FOR MORE INFORMATION:

Mason L. Capitani, SIOR

Managing Partner

248.637.7795

mlcapitani@lmcap.com

Aaron Smith

Vice President

248.637.3515

asmith@LMCap.com



CONNECT WITH US

248.637.9700 | www.LMCap.com

Information contained herein was obtained from sources deemed to be reliable but is not guaranteed. Subjects to prior sales, changes of price or withdrawal.



PROPERTY FOR LEASE

Westridge Office Center

7011-7013 Orchard Lake Road West Bloomfield, MI 48322



LIBERTY
PROPERTY & ASSET MANAGEMENT

ADDITIONAL PHOTOS



FOR MORE INFORMATION:

Mason L. Capitani, SIOR
Managing Partner
248.637.7795
mlcapitani@lmcap.com

Aaron Smith
Vice President
248.637.3515
asmith@LMCap.com



CONNECT WITH US

248.637.9700 | www.LMCap.com

Information contained herein was obtained from sources deemed to be reliable but is not guaranteed. Subjects to prior sales, changes of price or withdrawal.

PROPERTY FOR LEASE

Westridge Office Center

7011-7013 Orchard Lake Road West Bloomfield, MI 48322



LIBERTY
PROPERTY & ASSET MANAGEMENT

OFFICE PROPERTY DETAILS

Location Information

Street Address	7011-7013 Orchard Lake Road
City, State, Zip	West Bloomfield, MI 48322
County	Oakland
Cross-Streets	North of 14 Mile Rd
Nearest Highway	-

Building Information

Building Size	18,412 SF
Building Class	B
Occupancy %	37.3%
Tenancy	Multiple
Number of Floors	1
Year Built	1988
Gross Leasable Area	2,222 SF
Load Factor	10.0%
Annual Escalations	-
Partition Allowance	-

Lease Rate

\$17.50 SF/yr

Property Information

Property Type	Office
Property Subtype	Office Building
Zoning	OR-1
Lot Size	-
APN #	18-35-301-027

Parking & Transportation

Parking Type	Surface
Parking Ratio	-

Available Suites

7013 Orchard Lake Suite 110 - 5,860 SF	\$17.50 +Electricity
---	----------------------

FOR MORE INFORMATION:

Mason L. Capitani, SIOR

Managing Partner
248.637.7795
mlcapitani@lmcap.com

Aaron Smith

Vice President
248.637.3515
asmith@LMCap.com



CONNECT WITH US

248.637.9700 | www.LMCap.com

Information contained herein was obtained from sources deemed to be reliable but is not guaranteed. Subjects to prior sales, changes of price or withdrawal.

PROPERTY FOR LEASE

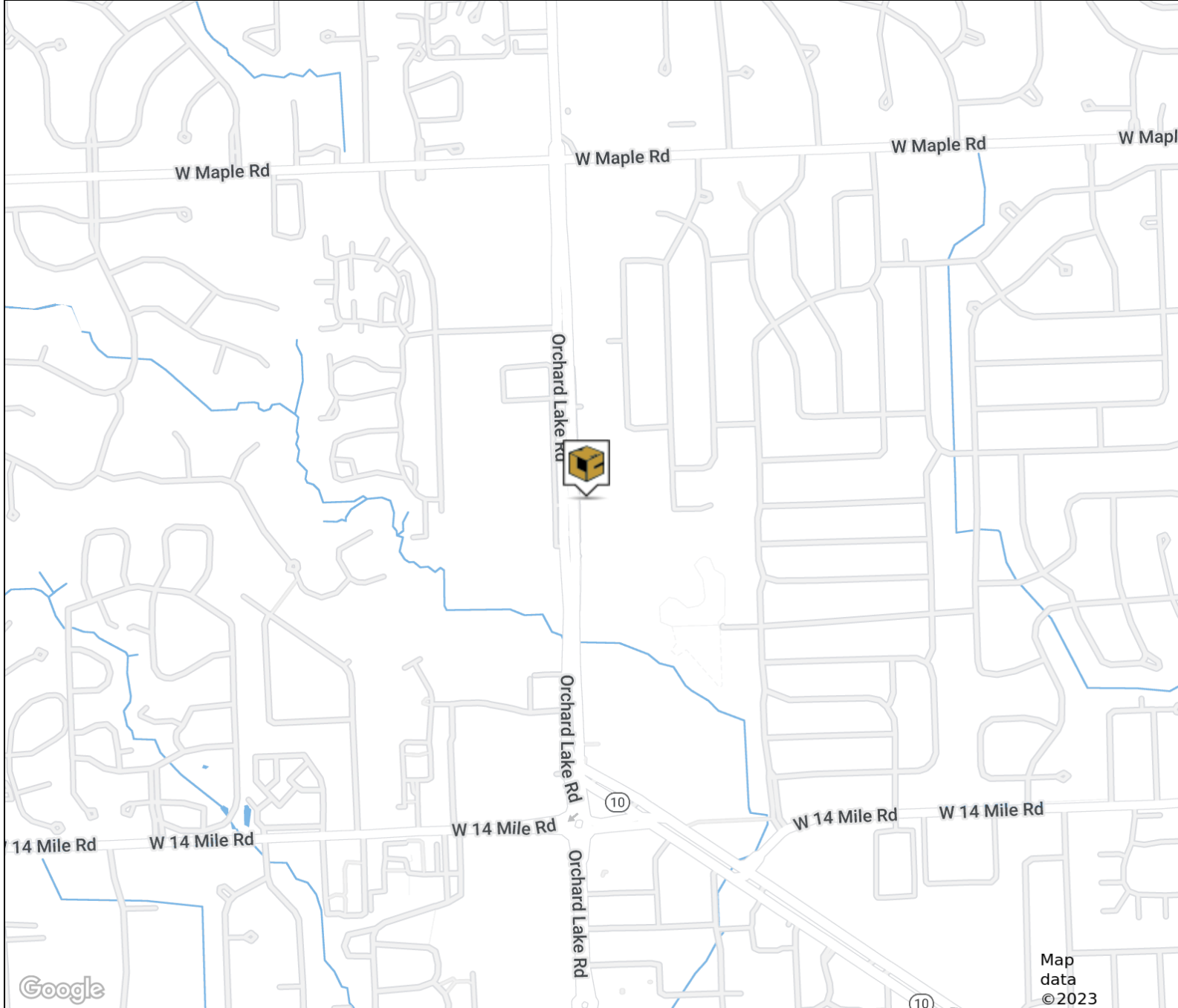
Westridge Office Center

7011-7013 Orchard Lake Road West Bloomfield, MI 48322



LIBERTY
PROPERTY & ASSET MANAGEMENT

RETAILER MAP



FOR MORE INFORMATION:

Mason L. Capitani, SIOR

Managing Partner

248.637.7795

mlcapitani@lmcap.com

Aaron Smith

Vice President

248.637.3515

asmith@LMCap.com



CONNECT WITH US

248.637.9700 | www.LMCap.com

Information contained herein was obtained from sources deemed to be reliable but is not guaranteed. Subjects to prior sales, changes of price or withdrawal.

PROPERTY FOR LEASE

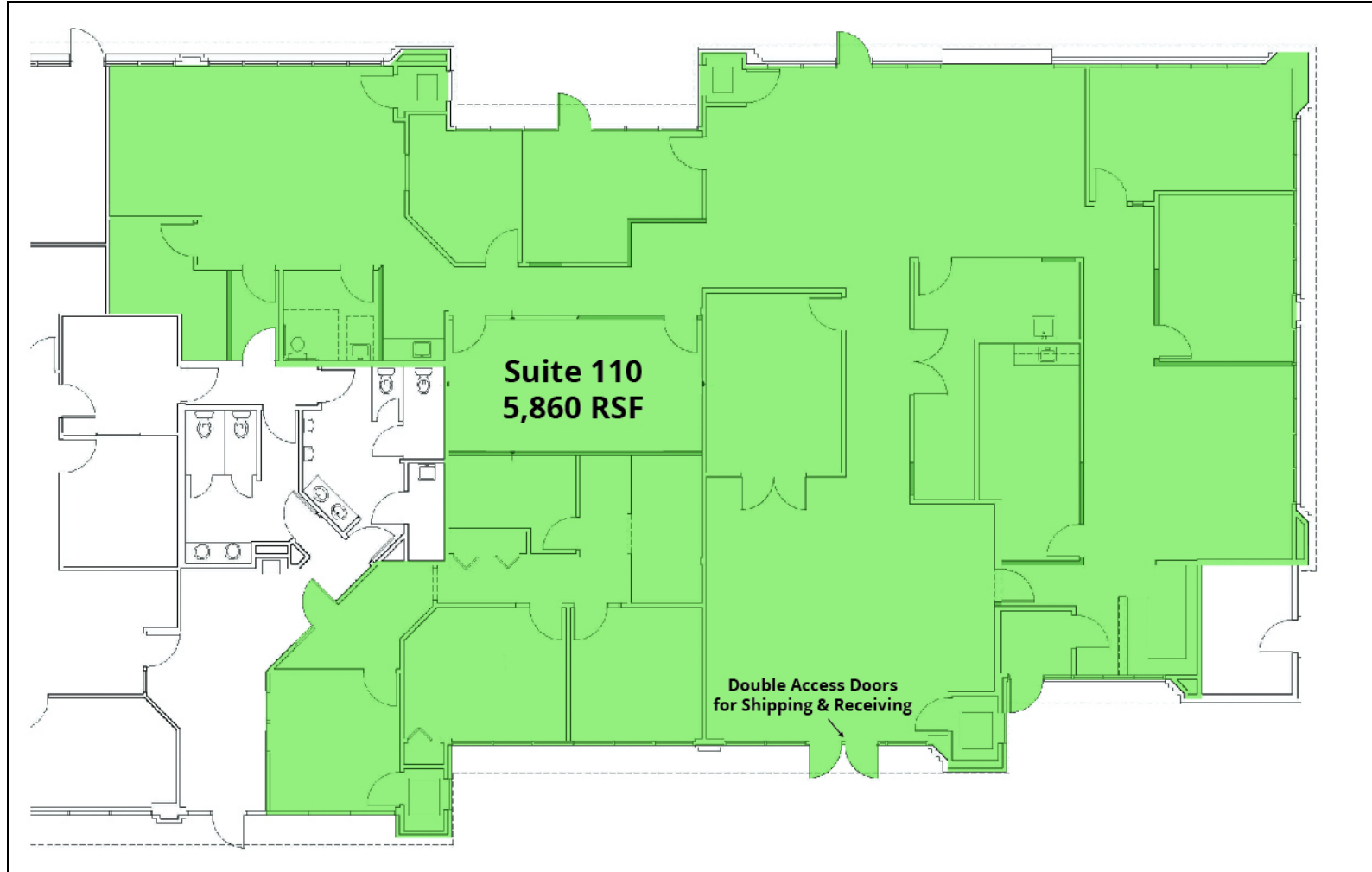
Westridge Office Center

7011-7013 Orchard Lake Rd West Bloomfield, MI 48322



LIBERTY
PROPERTY & ASSET MANAGEMENT

SUITE 110



Available Space

Suite	Tenant	Size (SF)	Lease Rate	Video
7013 Orchard Lake Suite 110	Available	5,860 SF	\$17.50 SF/yr	View Here

FOR MORE INFORMATION:

Mason L. Capitani, SIOR
Managing Partner
248.637.7795
mlcapitani@lmcap.com

Aaron Smith
Vice President
248.637.3515
asmith@LMCap.com



CONNECT WITH US

248.637.9700 | www.LMCap.com

Information contained herein was obtained from sources deemed to be reliable but is not guaranteed. Subjects to prior sales, changes of price or withdrawal.