



4660 BEECHNUT

OFFICE SPACE

4660 BEECHNUT ST.
HOUSTON, TX 77096



DAN MEYER

danmeyer@mcmanagement.com

meyercarrington.com

O: 713-668-2369

C: 713-806-8940

MEYER CARRINGTON



LOCATION HIGHLIGHTS

- LOCATED JUST INSIDE THE 610 LOOP IN CLOSE PROXIMITY TO MEYERLAND & BELLAIRE.
- THIS MIXED-USE PROPERTY OFFERS 20,000 SF OF PRIME RETAIL SPACE ON THE GROUND FLOOR AND 20,000 SF OF NEWLY REMODELED OFFICE SPACE ON THE SECOND FLOOR.
- POSITIONED ACROSS FROM SOUTH CROSS SHOPPING CENTER AND NEAR MEYERLAND PLAZA, THE BUILDING PROVIDES A CONVENIENT AND HIGHLY ACCESSIBLE LOCATION WITH AMPLE NEARBY DINING OPTIONS AND AMENITIES.

DAN MEYER

danmeyer@mcmanagement.com

meyercarrington.com

O: 713-668-2369

C: 713-806-8940

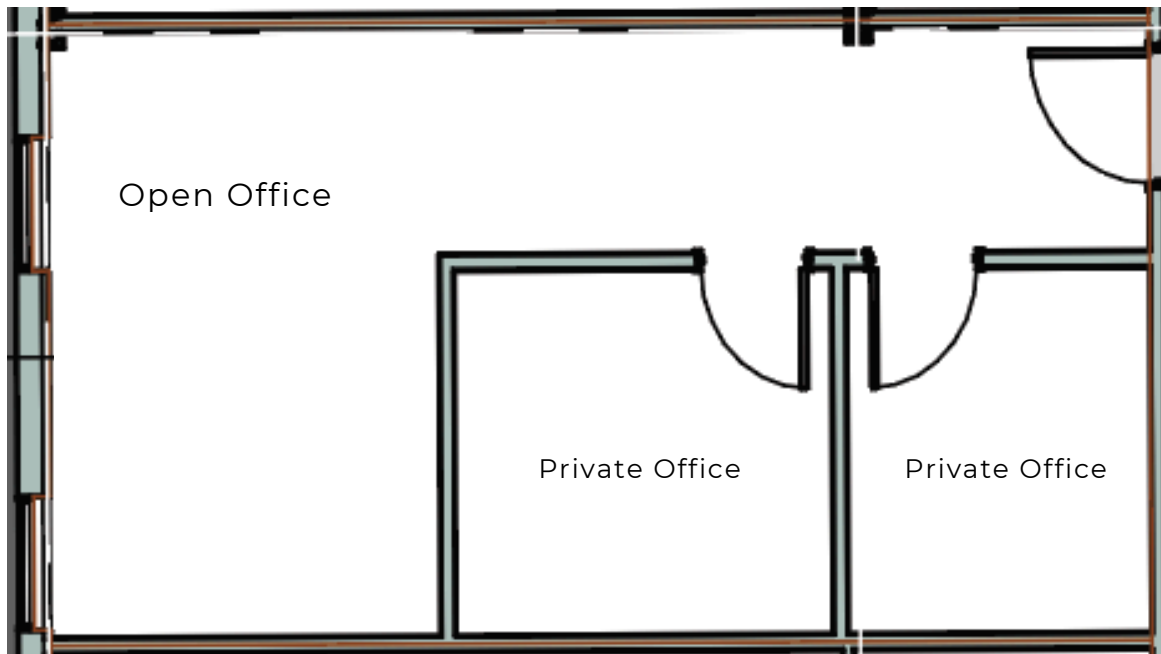


4660 BEECHNUT

SUITE 210

311 SF

Suite Layout



DAN MEYER

danmeyer@mcmangement.com

meyercarrington.com

O: 713-668-2369

C: 713-806-8940

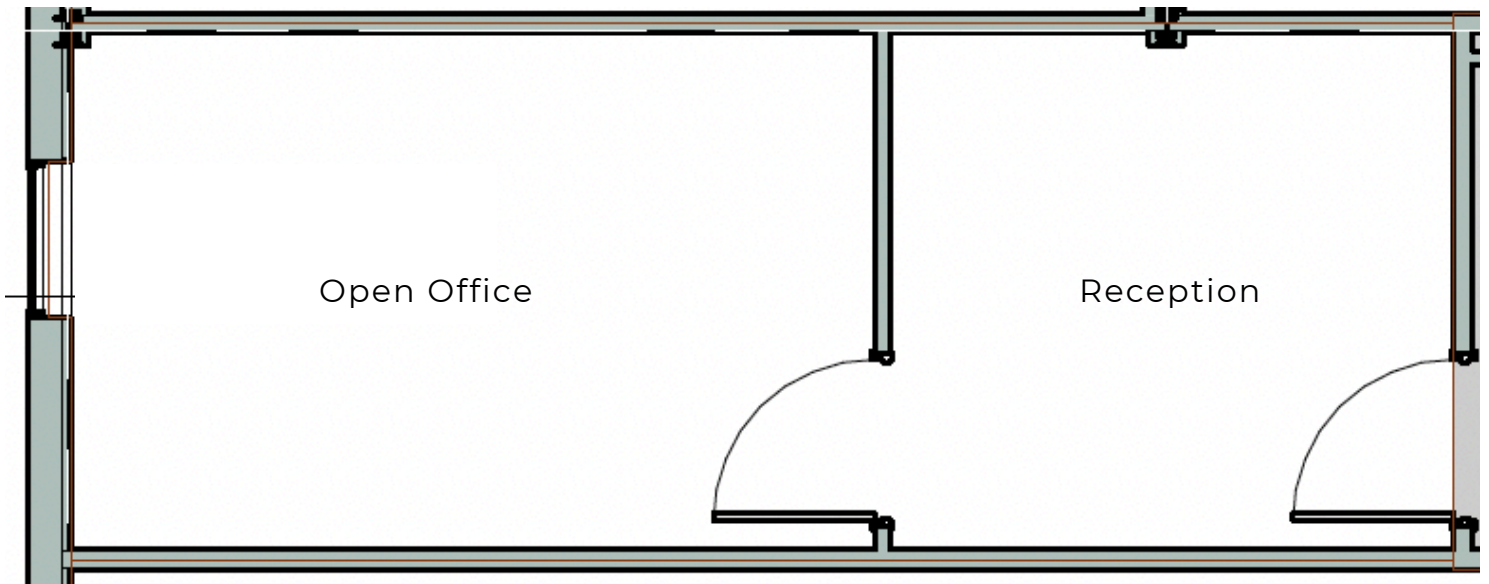
MEYER CARRINGTON



SUITE 215
315 SF

4660 BEECHNUT

Suite Layout



DAN MEYER

danmeyer@mcmanagement.com

meyercarrington.com

O: 713-668-2369

C: 713-806-8940

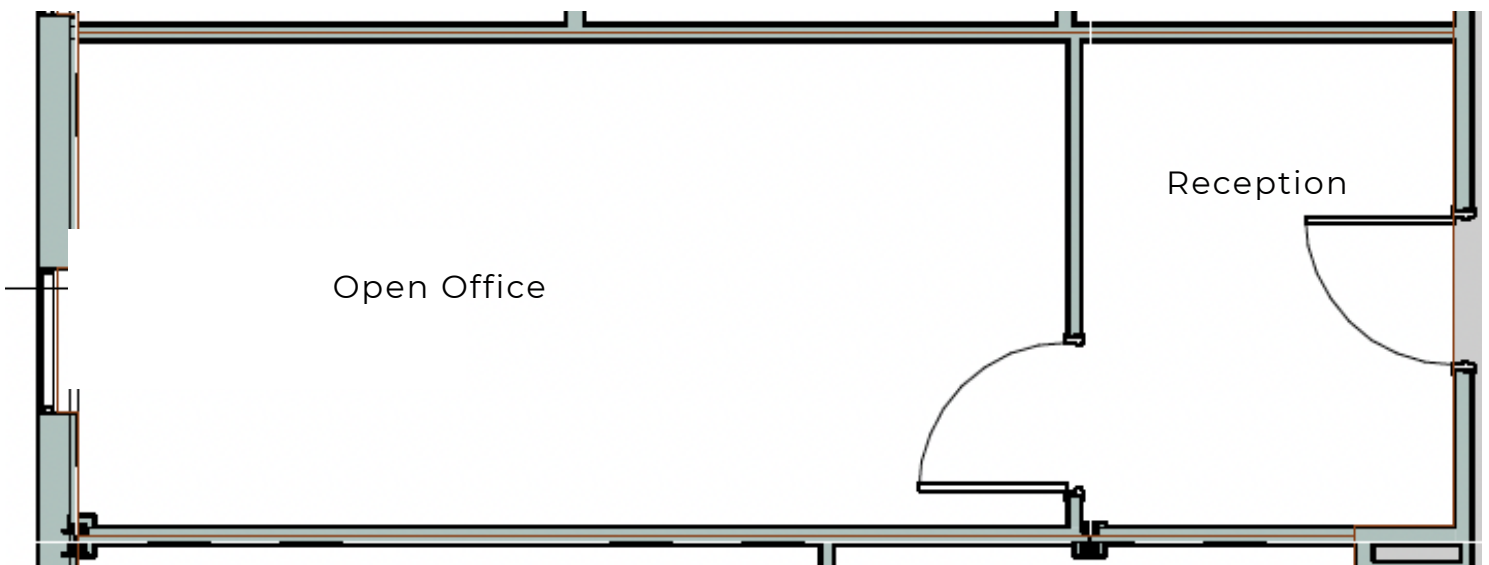
MEYER CARRINGTON



4660 BEECHNUT

SUITE 217
354 SF

Suite Layout



DAN MEYER

danmeyer@mcmanagement.com

meyercarrington.com

O: 713-668-2369

C: 713-806-8940

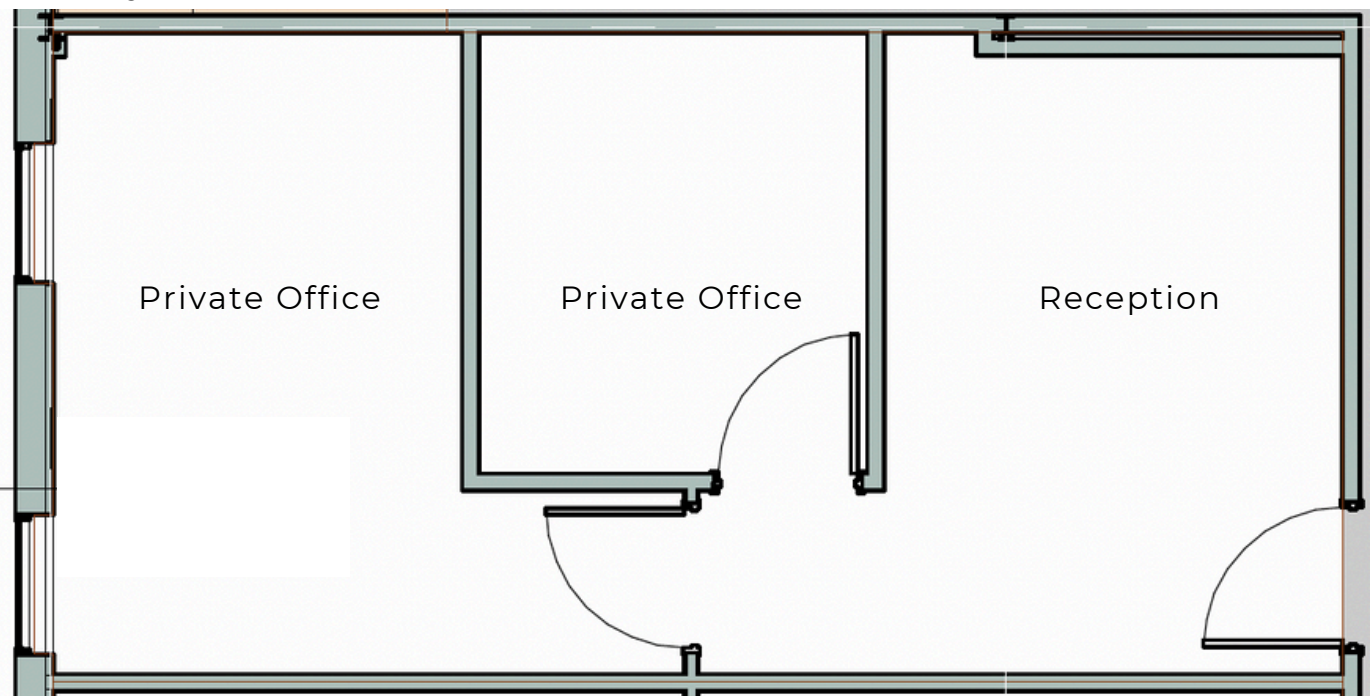
MEYER CARRINGTON



4660 BEECHNUT

SUITE 222
490 SF

Suite Layout



DAN MEYER

danmeyer@mcmanagement.com

meyercarrington.com

O: 713-668-2369

C: 713-806-8940

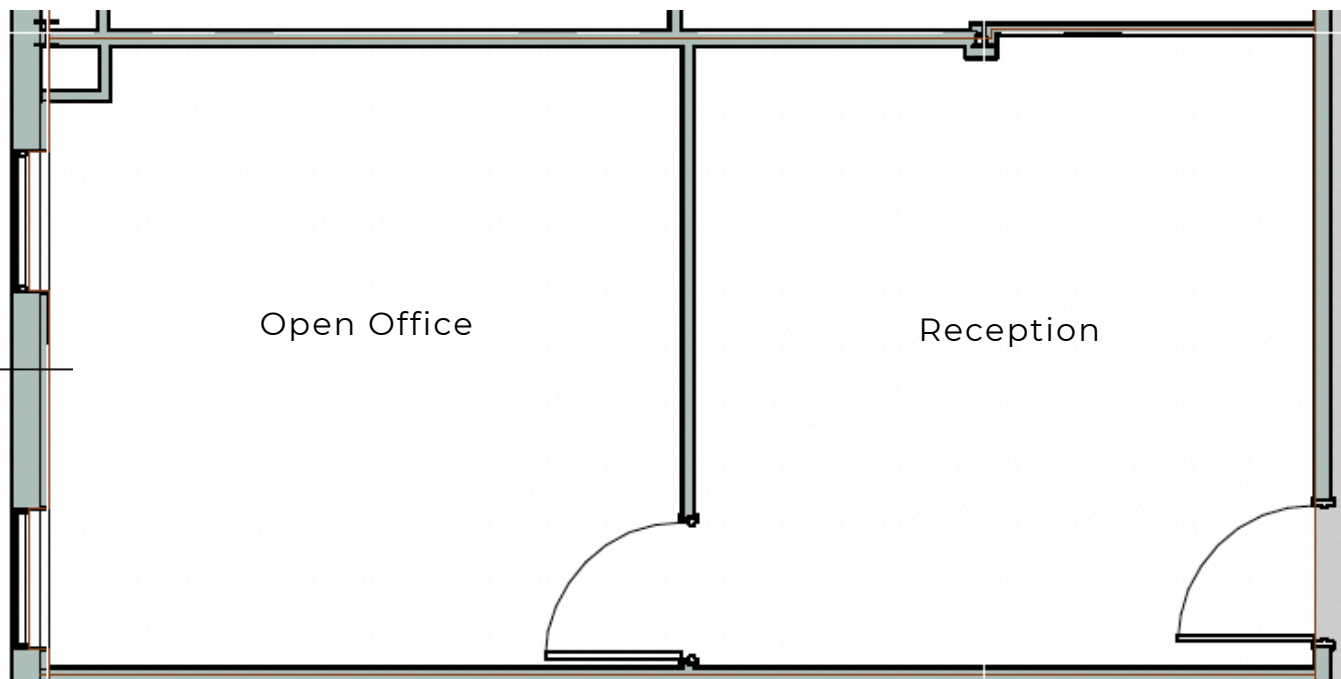
MEYER CARRINGTON



4660 BEECHNUT

SUITE 224
490 SF

Suite Layout



DAN MEYER

danmeyer@mcmanagement.com

meyercarrington.com

O: 713-668-2369

C: 713-806-8940

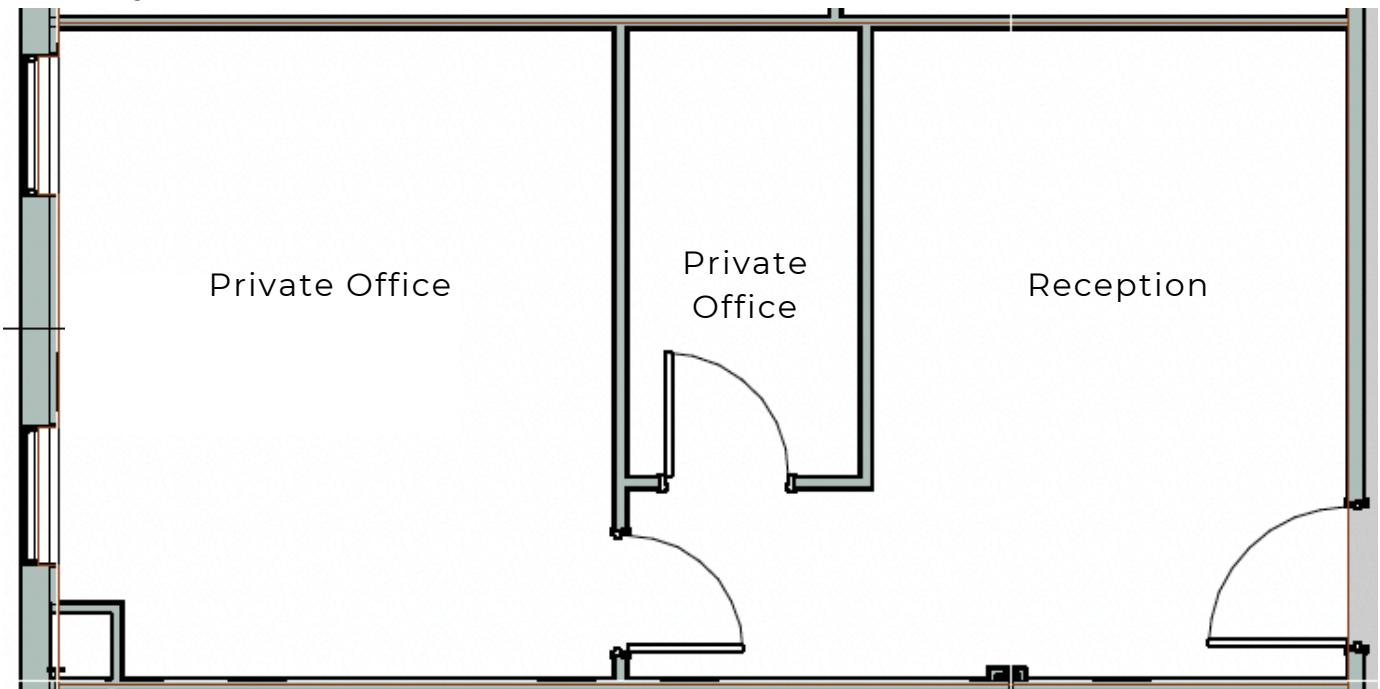
MEYER CARRINGTON



4660 BEECHNUT

SUITE 233
501 SF

Suite Layout



DAN MEYER

danmeyer@mcmanagement.com

meyercarrington.com

O: 713-668-2369

C: 713-806-8940

MEYER CARRINGTON