



**COLDWELL
BANKER
COMMERCIAL**

BULLARD

FOR SALE

FRANCIS PLACE

Subject To Offer

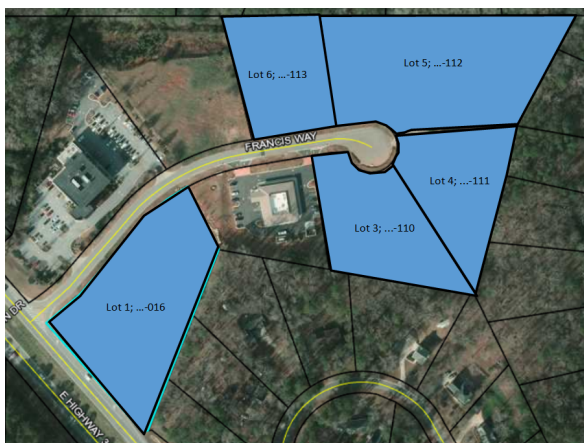
Francis Way
Sharpsburg, GA 30277

FEATURES

- Five parcels (1.4 ac - 2.4 ac)
- Two medical practices (Piedmont Heart and Fresenius Kidney Care) already in place
- Lots are graded
- Common storm water retention
- 25,510 VPD

AREA

Excellent location between Peachtree City and Newnan. Cul-de-sac office development off of Hwy 34 just 1.4 miles east of Hwy 154 (Thomas Crossroads). Piedmont Heart of Sharpsburg and Fresenius Kidney Care are in the park.



OFFICE

Tom Fulton
770.632.1774
tfulton@cbcbullard.net

©2019 Coldwell Banker Real Estate LLC, dba Coldwell Banker Commercial Bullard. All rights reserved. Coldwell Banker Commercial® and the Coldwell Banker Commercial logo are registered service marks owned by Coldwell Banker Real Estate LLC. Coldwell Banker Real Estate LLC, dba Coldwell Banker Commercial fully supports the principles of the Fair Housing Act and the Equal Opportunity Act. Each office is independently owned and operated. The information provided is deemed reliable, but it is not guaranteed to be accurate or complete, and it should not be relied upon as such. This information should be independently verified before any person enters into a transaction based upon it.

**COLDWELL BANKER COMMERCIAL
BULLARD**
201 Prime Point, Peachtree City, GA 30269
770.632.1774

CBCWORLDWIDE.COM



FRANCIS PLACE

Francis Way, Sharpsburg, GA 30277

SALE



OFFERING SUMMARY

Sale Price: Subject To Offer

Lot Size: 11.3 Acres

Zoning: OI

Market: South Atlanta

Submarket: Coweta/Fayette

Price / SF: -

PROPERTY OVERVIEW

Excellent setting for professional development. Road, curbs and all utilities (including sewer) in place.

PROPERTY HIGHLIGHTS

- Five parcels (1.4 ac - 2.4 ac)
- Two medical practices (Piedmont Heart and Fresenius Kidney Care) already in place
- Lots are graded
- Common storm water retention
- 25,510 VPD

CBCWORLDWIDE.COM

Tom Fulton
770.632.1774
tfulton@cdbcullard.net



**COLDWELL
BANKER
COMMERCIAL**

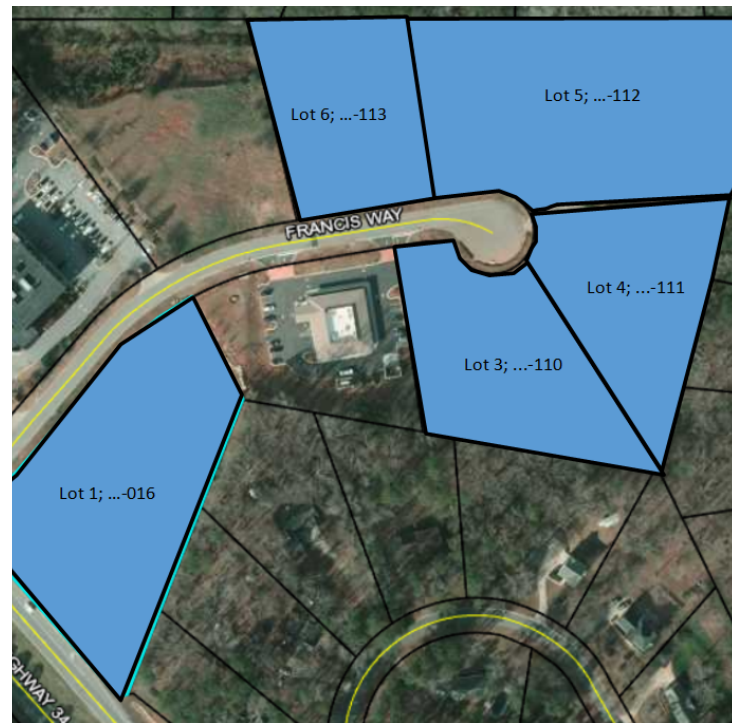
BULLARD



FRANCIS PLACE

Francis Way, Sharpsburg, GA 30277

SALE



CBCWORLDWIDE.COM

Tom Fulton
770.632.1774
tfulton@cbbullard.net



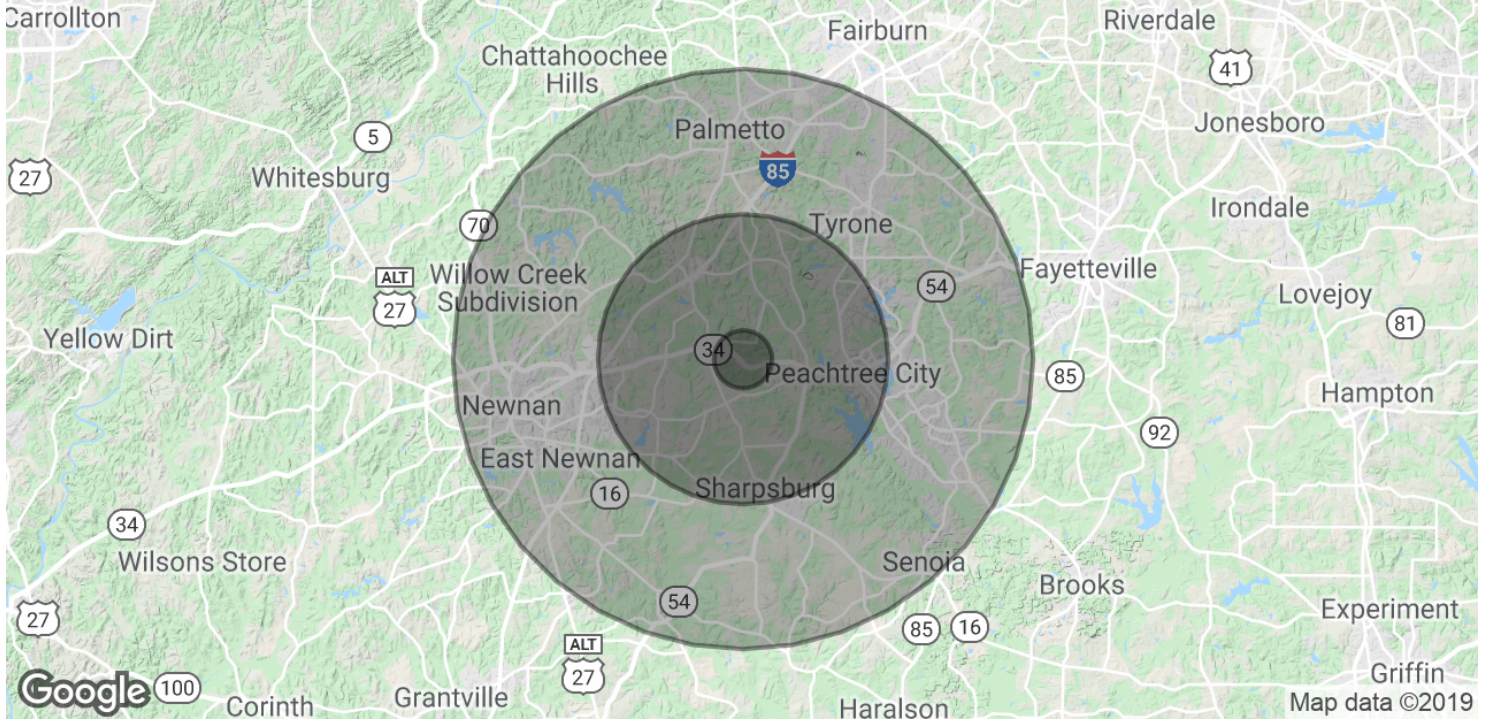
**COLDWELL
BANKER
COMMERCIAL**
BULLARD



FRANCIS PLACE

Francis Way, Sharpsburg, GA 30277

SALE



POPULATION	1 MILE	5 MILES	10 MILES
Total Population	2,664	49,257	156,004
Median age	36.2	36.8	37.8
Median age (Male)	35.1	35.7	36.9
Median age (Female)	36.7	37.6	38.5
HOUSEHOLDS & INCOME	1 MILE	5 MILES	10 MILES
Total households	916	17,562	56,445
# of persons per HH	2.9	2.8	2.8
Average HH income	\$81,341	\$84,509	\$86,312
Average house value	\$228,941	\$229,799	\$268,452

* Demographic data derived from 2010 US Census

CBCWORLDWIDE.COM

Tom Fulton
770.632.1774
tfulton@cbcbullard.net



**COLDWELL
BANKER
COMMERCIAL**

BULLARD